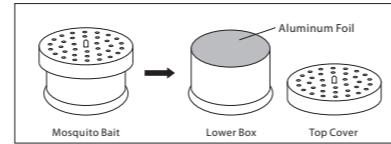
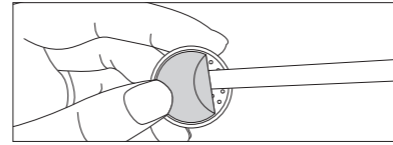


## Mosquito Bait Installation:

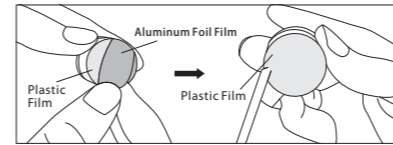
1. Remove the mosquito bait from the plastic bag and remove the top cover.



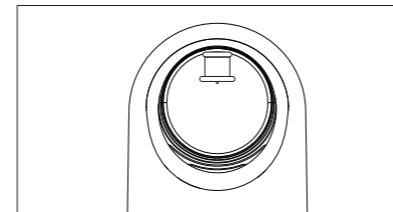
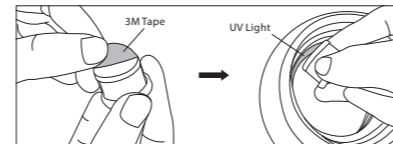
2. Remove the paper from the top cover.



3. Remove the aluminum foil film and plastic film from the top of the lower box. You may need to use a sharp instrument to remove them.



4. Once the film has been removed; place the top cover over the low box and make sure it's on tightly. Remove the 3M tape below the lower box and stick it on the inside of the mosquito trap as shown below:



**WARNING!** - Do not open contents of the mosquito bait, Keep out of reach of children  
Do not touch or swallowing as it may cause skin irritation or eye damage.  
If you have swallowed or suspect someone has, immediately call the 24-hour  
Poisons Information Centre on 13 11 26 (Australia) or 0800 764-766  
(New Zealand) for fast, expert advice.