



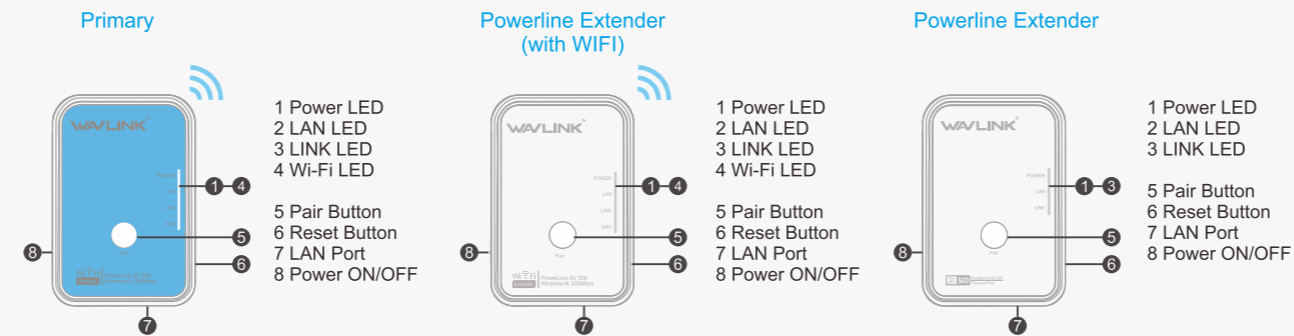
## Wireless Powerline Extender Kit

### Quick Guide



REV.E2

## Hardware Overview



### Primary Default Parameters

Login : <http://wifi.wavlink.com> (Please use the wireless connection)

Default IP : 192.168.10.1 Login Password : admin

Wi-Fi SSID : WAVLINK-N Wi-Fi Key : no

### Pair Button:

Press and hold for 2 seconds to start the Powerline pairing process.  
Press and hold for 6 seconds to copy your router's Wi-Fi SSID and password.

### Reset Button:

Press and hold for 8 seconds to Reset the device.

### Extender

#### Pair Button:

Press and hold for 2 seconds to start the Powerline pairing process.

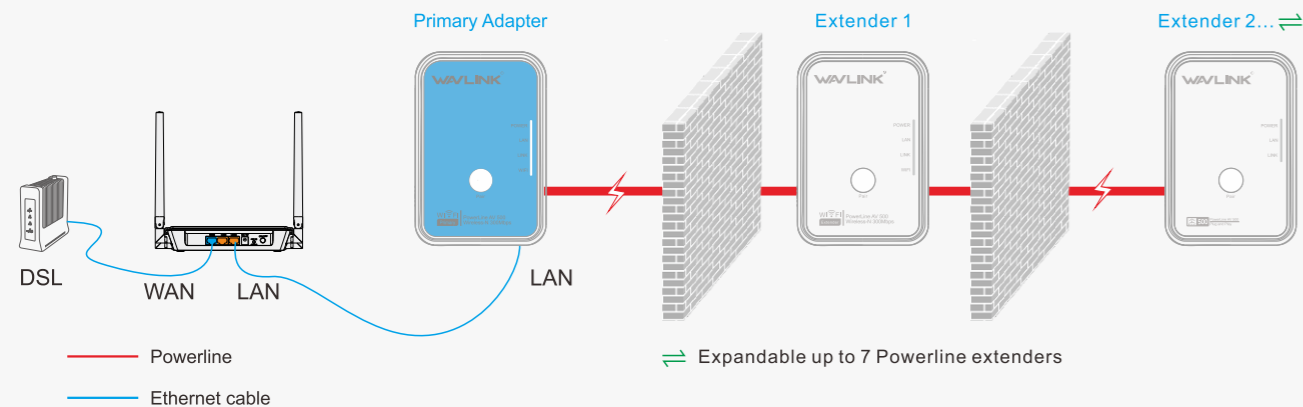
#### Reset Button:

Press and hold for 8 seconds to Reset the device.

### LED indicators

POWER	<b>ON / OFF</b> : The device is ON or OFF. <b>Fast Flashing</b> : Powerline network pairing is in process. <b>Slow Flashing</b> : The device is in Power-saving status.
LINK	<b>ON</b> : Connected to the Powerline network. <b>OFF</b> : Disconnected to the Powerline network or is in Power-saving status. <b>Flashing</b> : Transferring data.
LAN	<b>ON</b> : The Ethernet port is connected. <b>OFF</b> : No Ethernet connection is detected.
Wi-Fi/Pair Primary	<b>ON</b> : Wi-Fi is ON. <b>OFF</b> : Wi-Fi is OFF. <b>Flashing</b> : Copying Wi-Fi SSID and Password from your router .
Wi-Fi Extender	<b>ON</b> : Wi-Fi is ON. <b>OFF</b> : Wi-Fi is OFF.

## Create a Powerline Network



3

Secure your Powerline network.

A

Press the **Pair** button on the Primary Adapter for 2 seconds. The POWER LED starts blinking.

\*If the POWER LED does not blink, press it again.

B

Within 2 minutes, press the **Pair** button on the extender for 2 seconds. The POWER LED starts blinking. After the POWER LED is on and stable, your Powerline network is secured.



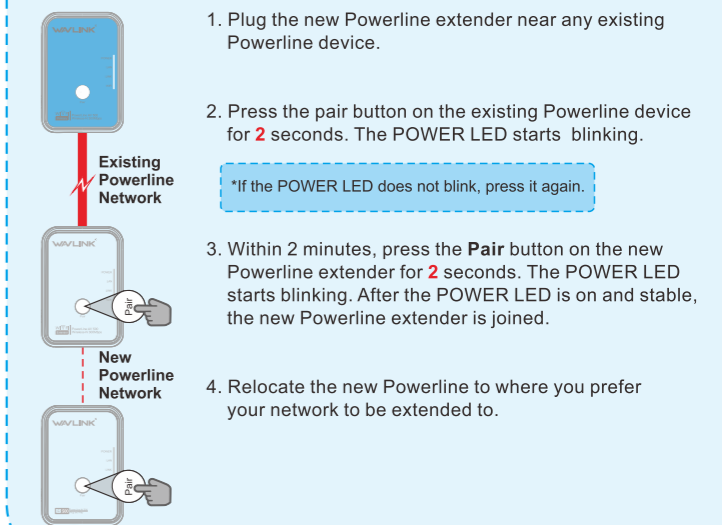
Enjoy!

4

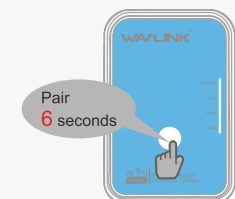
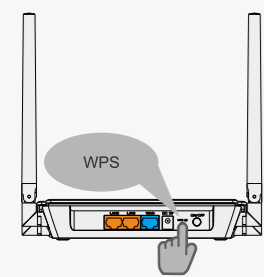
After paired, relocate the Powerline extender and plug it into a wall outlet at where you need your network to be extended to.

\*Please refer to FAQ, if the 4-step guide doesn't work.

## Join an Existing Secured Powerline Network



## Customize Powerline Wi-Fi Settings



### OPTION ONE - Wi-Fi Clone

Copy Wi-Fi SSID and password from Router to Primary Adapter using WPS.

If your router supports WPS, you can follow the steps below to automatically copy your router's Wi-Fi SSID and password to the primary adapter.

- Press the WPS button on your router.
- Within 2 minutes, press the **Pair** button on the Powerline Adapter for 6 seconds. The Wi-Fi LED starts blinking. When the Wi-Fi LED stays on and stable, the copying process is done.

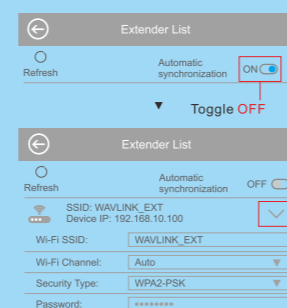
#### NOTE:

- The default **Primary Adapter's** SSID (Wi-Fi name) "Your router's SSID + \_EXT", and the password is same as your router.
- For more information about using WPS on your router, please refer to the router manufacturer's user guide.

### Wi-Fi Setting Auto Synchronization

Automatic Synchronization feature is enabled by default. With the feature enabled, any changes made to the Wi-Fi settings of one Powerline extender will automatically synchronize to other Powerline extenders on the same Powerline network.

\* If you want to set different SSIDs (Wi-Fi names) and passwords between your Powerline extenders, please follow the steps below:

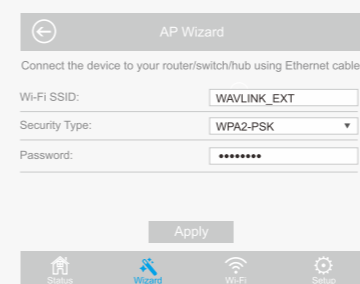


Note: If your Powerline extender does not show up in the **Extender List**, try the "Refresh" button or reconnect the extender and try again.

- Connect your device to the Powerline extender wirelessly.
- Launch a web browser and enter <http://wifi.wavlink.com> in the address field. Enter **admin** (all lowercase) to log in.
- Click **Wi-Fi** -> **Extender List**, and toggle **OFF** Automatic synchronization.
- Click the dropdown icon ">" of the extender and configure.

### OPTION TWO - Via Web Browser

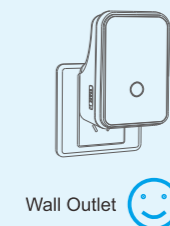
- Connect your device to the Powerline extender **wirelessly**.
- Launch a web browser and enter <http://wifi.wavlink.com> in the address field. Enter **admin** (all lowercase) to log in.



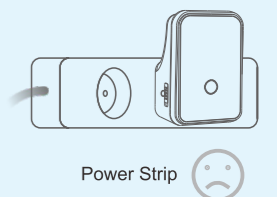
- Click **Wizard** to set up a SSID and Wi-Fi password.

## Attention

For non-passthrough powerline device



Wall Outlet



Power Strip

## Configuring via Web Management Interface

### Change Wi-Fi name and password

1. Connect your device to the Powerline extender **wirelessly**.
2. Launch a web browser and enter <http://wifi.wavlink.com> in the address field. Enter **admin** (all lowercase) to log in.
3. Click **Wi-Fi** -> **Wi-Fi Setup** to set a SSID and Wi-Fi password.

Wireless Status: ON

Hide SSID:

Wi-Fi SSID:

Security Type:

Password:

Status Wizard Wi-Fi Setup

\* If you want to set different SSIDs (Wi-Fi names) and passwords between your Powerline extenders, please refer to "Wi-Fi Setting Auto Synchronization".

### Change Login password

1. Visit <http://wifi.wavlink.com>, and log in with the password you set for the device before.
2. Click **Setup** -> **Login Password**.
3. Enter the old password. Then enter the new password (case-sensitive) and click the **Apply** button.

Old Password:

New Password:

Status Wizard Wi-Fi Setup

4. Use the new password for future login attempts.

**Note:**  
The default login password is "admin". We strongly recommend you change the default login password.

### Firmware Upgrade

Firmware upgrade can fix bugs of the device. However, We **DO NOT** recommend you upgrade the firmware of the device if it works properly.

1. Download the latest firmware file for the device from our Website [www.wavlink.com](http://www.wavlink.com).
2. Click **Setup** -> **Upgrade Firmware**.

Version:M78N\_V3130.1121

Do NOT power off the device during the firmware upgrade. Wait a few minutes for the firmware upgrade to complete and the device to reboot.

Status Wizard Wi-Fi Setup

3. Click **Browse** (or **Choose File**) to locate the downloaded new firmware file.
4. Click **Apply** button, and wait a few minutes for the upgrade to complete.

**Note:**  
Never interrupt the upgrade procedure by closing the web browser or physically disconnect your computer from the device. If the procedure is interrupt, the firmware upgrade will fail, and you may have to return the device to the dealer to ask for help.

**Warranty voids if you interrupted the upgrade procedure.**

## FAQ (Frequently Asked Questions)

### Q1. How do I reset my Wi-Fi extender ?

A. With the extender powered on, press and hold the Reset button until all LEDs turn off. When the Power LED the Wi-Fi LED are on and stable, the reset process is complete.

### Q2. How to troubleshoot if there is no Internet connection in my Powerline network ?

A1. Make sure all Powerline devices are on the same electrical circuit.

A2. Make sure the LINK LEDs light up on all your adapters and extenders. If they do not, pair your adapters and extenders again.

A3. Make sure all hardware connections are correctly and securely connected.

A4. Check if you have an Internet connection by connecting the computer directly to the modem or router.

A5. Make sure your computer is set to obtain an IP address automatically or make sure your computer's IP address is in the same segment as your router's.

### Q3. What can I do if a successfully-paired extender does not reconnect after it has been moved to a new location?

A1. Make sure all Powerline devices are on the same electrical circuit.

A2. Try to pair it again with another adapter or extender, and make sure the LINK LED is on before relocating it.

A3. Check for possible interference, such as washers, air conditioners or other household appliances that may be too close to one of the Powerline adapters or extenders.

## GNU General Public License Notice

This product includes software codes developed by third parties. These software codes are subject to either the GNU General Public License (GPL), Version 2, June 1991 or the GNU Lesser General Public License (LGPL), Version 2.1, February 1999. You can copy, distribute, and/or modify in accordance with the terms and conditions of GPL or LGPL.

The source code should be complete, if you want us to provide any additional source code files under GNU General Public License (GPL), please contact us in these matters. We are committed to meeting the requirements of the GNU General Public License (GPL). You are welcome to contact us local office to get the corresponding software and licenses. Please inform us your contact details (full address)and the product code. We will send you a software package with the software and license for free.

The respective programs are distributed WITHOUT ANY WARRANTY; without even the implied warranty of MERCHANTABILITY or FITNESS FOR A PARTICULAR PURPOSE.

Please refer to the GNU General Public License Web site for further information.  
<http://www.gnu.org/licenses/old-licenses/lgpl-2.0.html>  
<http://www.gnu.org/licenses/gpl.html>

### WEEE Directive & Product Disposal



At the end of its serviceable life, this product should not be treated as household or general waste. It should be handed over to the applicable collection point for the recycling of electrical and electronic equipment, or returned to the supplier for disposal.