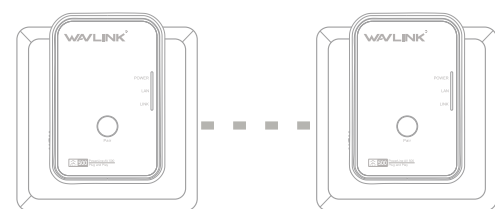




Quick Install Guide

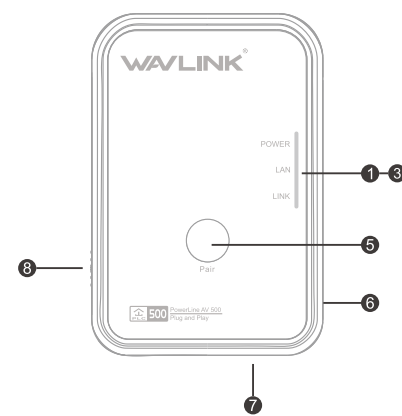
PowerLine Network Kit



Thank you for purchasing the PowerLine Network Kit. Follow the easy steps in this guide to properly set up your PowerLine adapters. Please verify that all of the package contents listed below are available.

REV E1

Hardware Overview



- 1 Power LED
- 2 LAN LED
- 3 LINK LED
- 5 Pair Button
- 6 Reset
- 7 LAN Port
- 8 Power ON/OFF

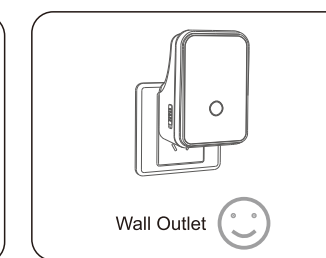
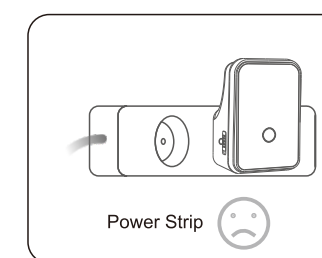
1	Power LED	<ul style="list-style-type: none"> • ON: The device is receiving electrical power. • Fast Flashing: The device is creating/joining private network • Slow Flashing: The device is power saving mode(Once every 15 seconds) • Off: The device is not receiving electrical power.
2	LAN LED	<ul style="list-style-type: none"> • ON: The Ethernet port is linked. • Off: There is no Ethernet connection.
3	Link LED	<ul style="list-style-type: none"> • ON: Connected to Power line network • OFF: Not connected to the powerline network or is in Power-Saving Mode
4	Ethernet Port	Connect to an Ethernet device such as a router, computer, gaming console, network storage device, or a media player.
5	Pair/Reset Button	Press and hold for 1 seconds to secure your network Press and hold for 12 seconds to Reset the Device

Package Contents

Powerline Adapter
RJ-45 Ethernet Cable
Quick Installation Guide

Installation

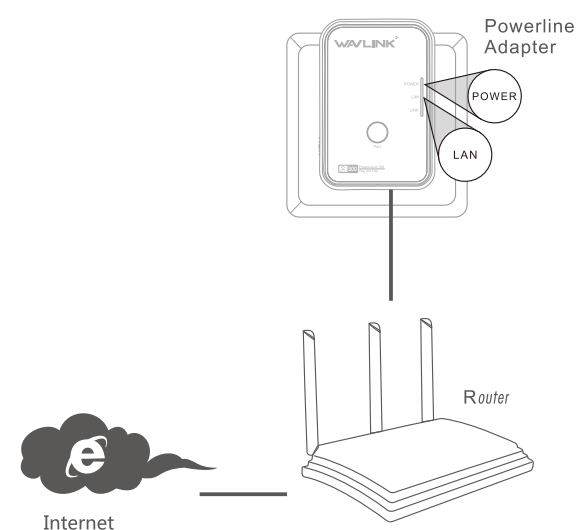
Warning Before Installation



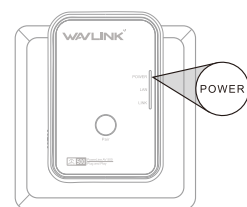
Recommendations

- For best results, use in a regular wall outlet without any other devices plugged in. Plugging into a power strip or a surge protector may adversely affect the performance of this product.
- Avoid using the PowerLine adapters in an electrical outlet that is located near an appliance that uses a lot of power, such as a washer or dryer, refrigerator, microwave, hair dryer, or air conditioning unit.
- To verify connectivity or if you are having connection problems, plug the adapters in the same room to verify whether your home's electrical wiring is contributing to the issue. The adapters' PowerLine LED indicators will illuminate if the connection is established. Once configured you may place the adapter in the location of your choice.

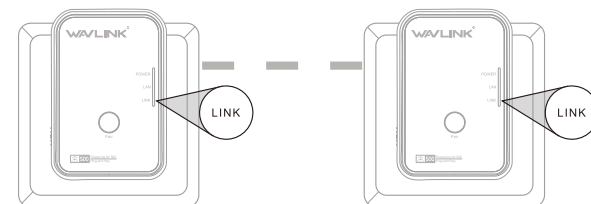
- 1** Plug in one of the PowerLine adapters and connect to your router with an Ethernet cable. The Power and LAN LEDs should both light up.



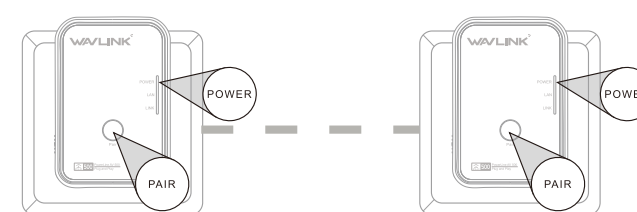
- 2** Plug in the other Powerline Adapter adapter in the room that you want to extend your network. The Power LED will turn on.



- 3** Verify that the Link LEDs on both adapters are lit. If they are, the adapters are connected. If not, try another outlet (closer to the other PowerLine adapter).

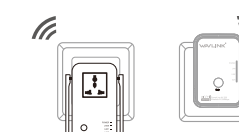


- 4** To secure your network, press the PAIR button for 1 seconds on one of the adapters. The Power LED will start to blink. Then, within 2 minutes, press the PAIR button on the other adapter for 2 seconds. Once the Power LEDs stop blinking, verify that the PowerLine LED is lit on both adapters (as in Step 3). This indicates that your adapters are properly connected to each other.



- 5** You can now connect another device using an Ethernet cable to the Powerline Adapter adapter. Verify that the LAN LED is lit. Your installation is completed.

Elative Products



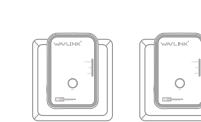
PowerLine AV500 Wireless Kit



PowerLine AV1200 Network Kit



PowerLine AV500 Wireless Kit



PowerLine AV500 Network Kit

名称：NWP502M说明书WAVLINK-E1

成品尺寸：100x140mm 页数/展开尺寸：4页/400x140mm

材质工艺：80克双胶纸 印黑白

修改时间：2017.5.24

备注：

修改记录：