

Outdoor Wireless Network Adaptor



User Manual

Package Contents

- 1 x Outdoor Wireless Network Adaptor
- 1 x Mounting Bracket
- 1 x Mounting Hardware Kit
- 1 x Software CD

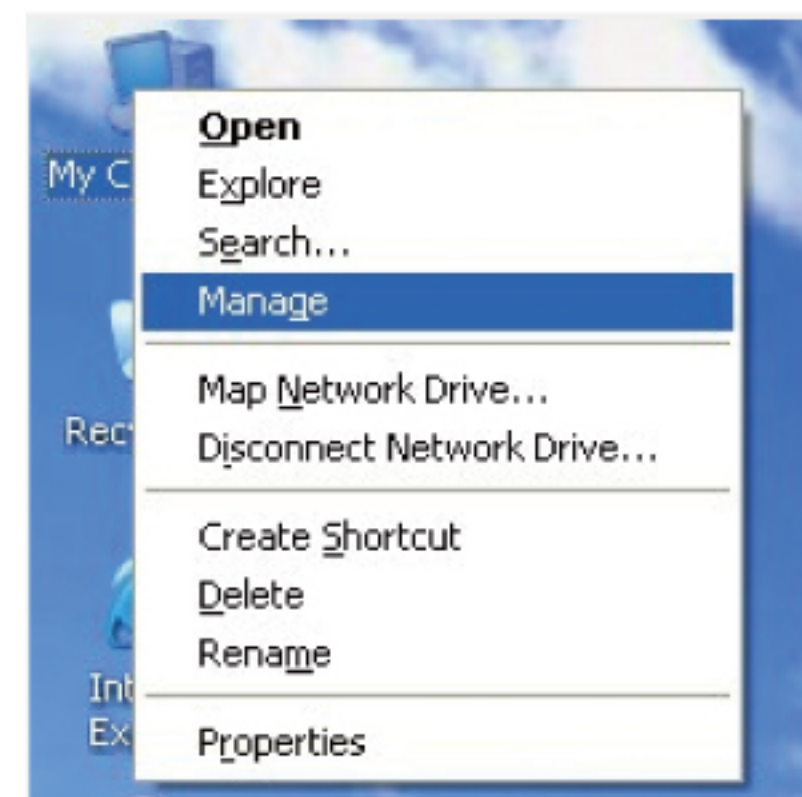


1.2 Before Installation

Before installation of the software, it is recommend to disable any other network adaptor's previously installed before installing the driver.

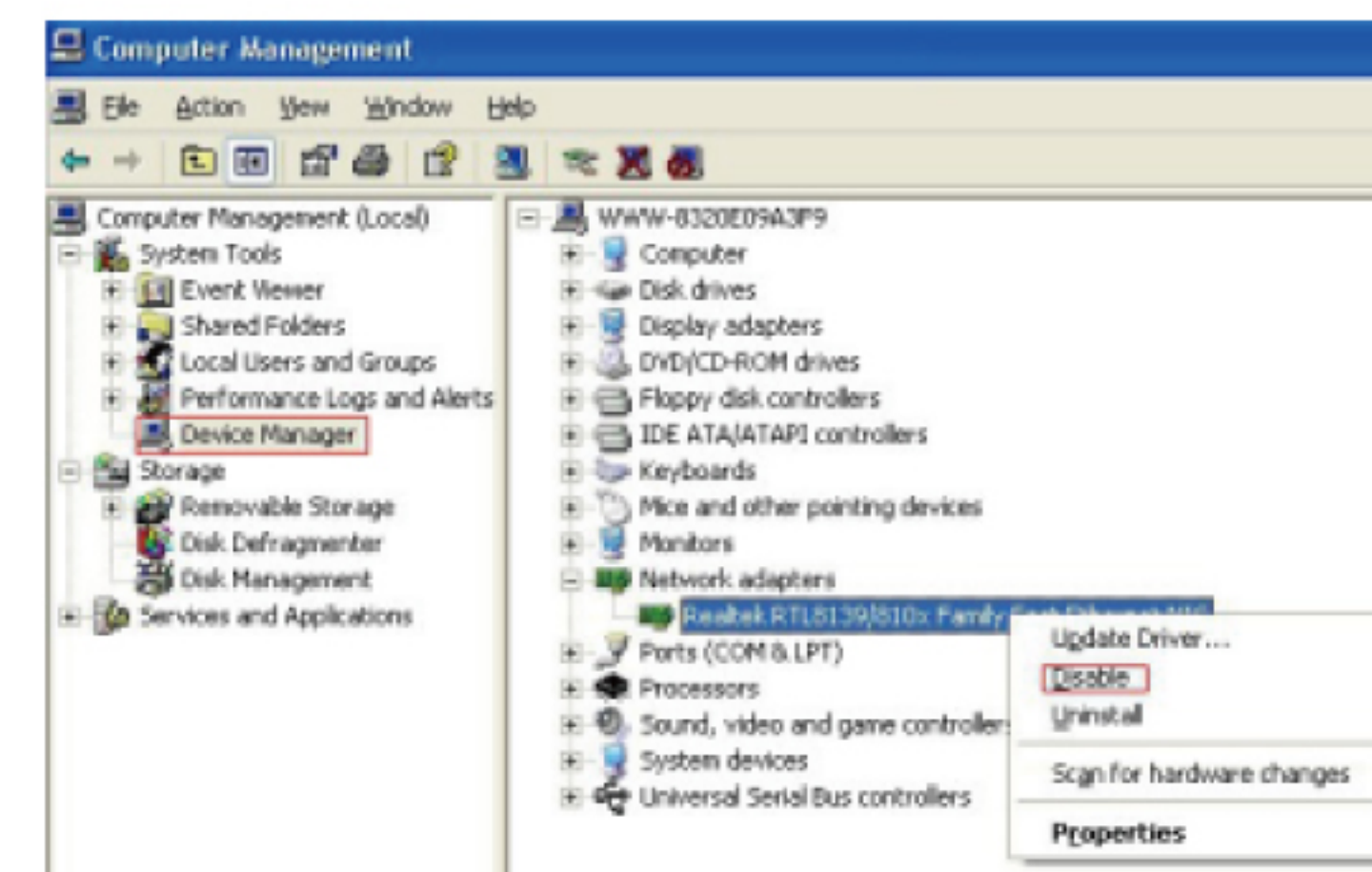
1.3 Disabling Existing Wireless Network Adaptors

1. Right click "My Computer" and select "Manage"



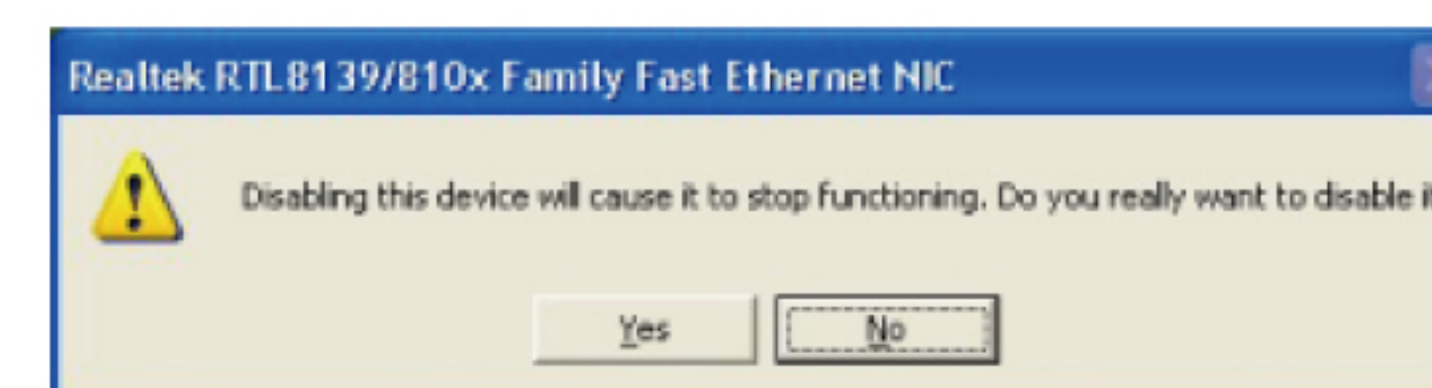
1

2. Open the Computer Management screen, select "Device Manager" – "Network adapters", and right click the network adapter you want to disable and click "Disable"



2

3. Click the "Yes" button on the dialogue box to disable the network adaptor.



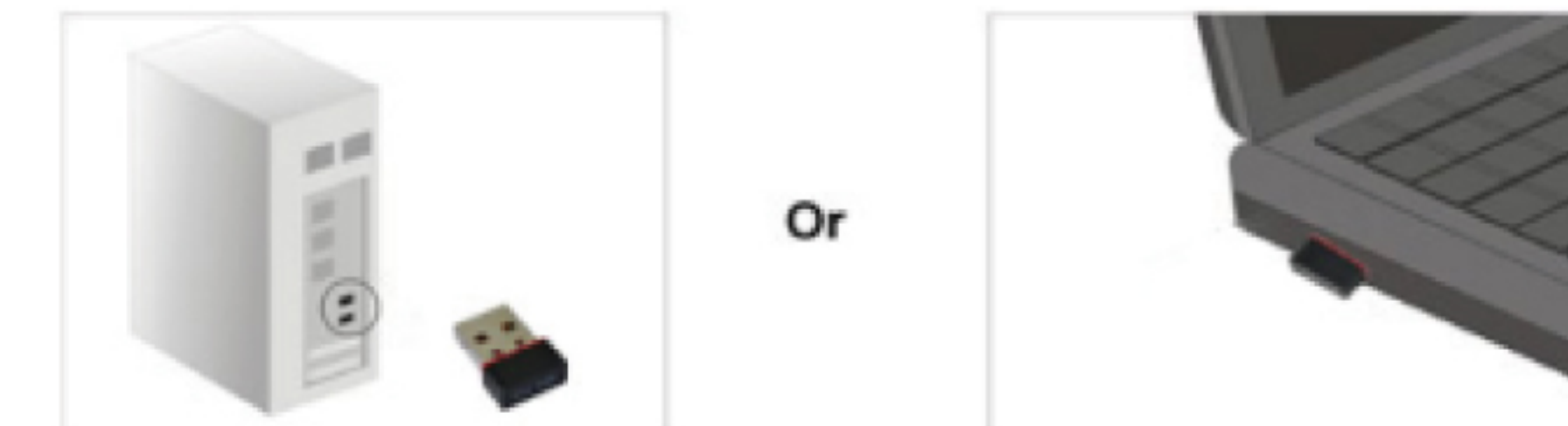
3

Installation Guide:

The package integrates the driver and configuration software. Thus, when you are installing the driver, the configuration software will be installed automatically as well.

2.1 Install the USB network adaptor

- 2.1.1 Please insert the Wireless USB Adaptor into the USB port of your computer.

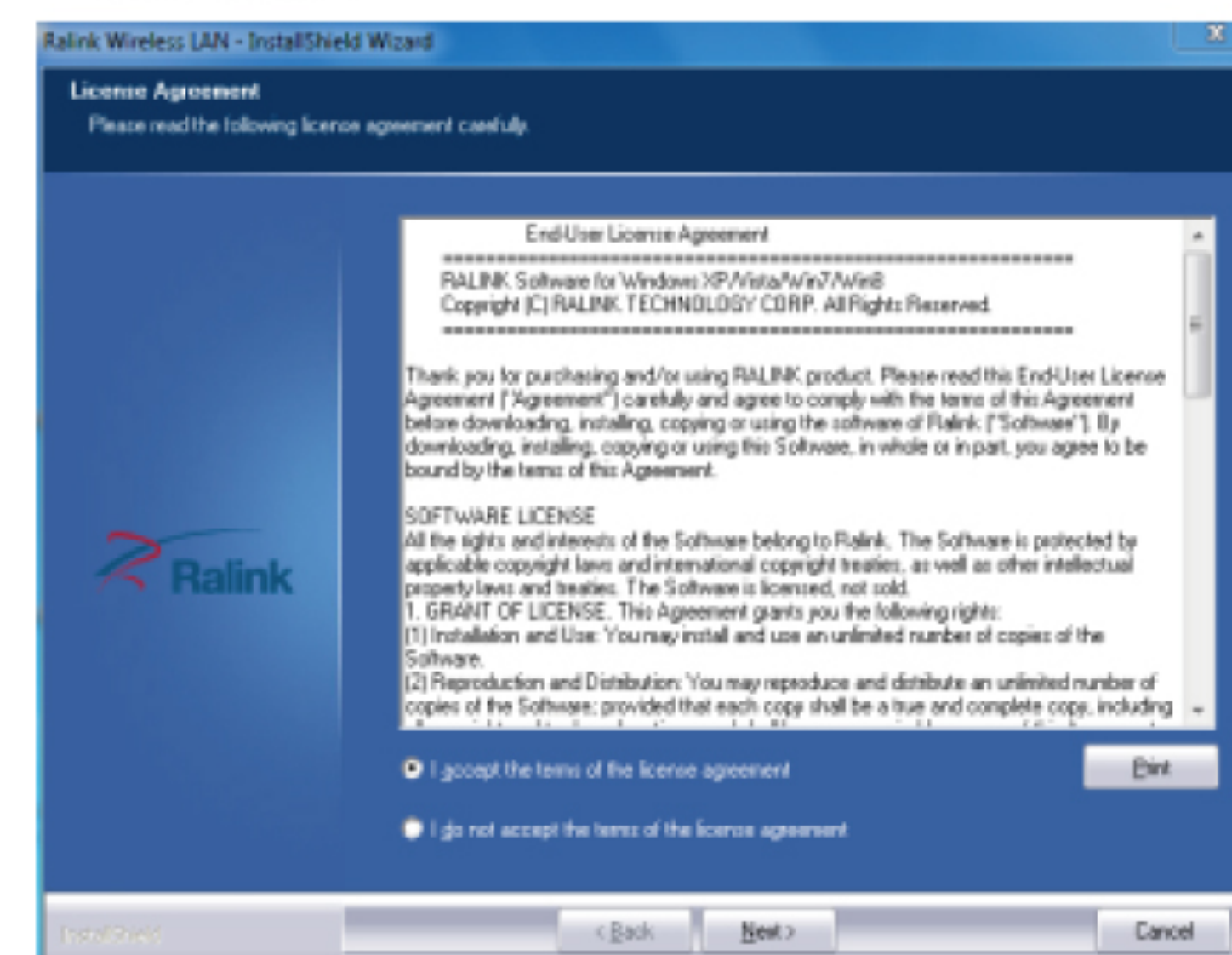


- 2.1.2 Put the included software CD into the CD drive of your computer and the driver should will auto run automatically , a Welcome screen should pop up, just click the "RUN" button. (Double click "Setup.exe" in the software CD and manually install when it doesn't auto-run).

Distributed by:
 TechBrands by Electus Distribution Pty Ltd.
 320 Victoria Rd, Rydalmere
 NSW 2116 Australia
 Ph: 1300 738 555
 Int'l: +61 2 8832 3200
 Fax: 1300 738 500
 www.techbrands.com

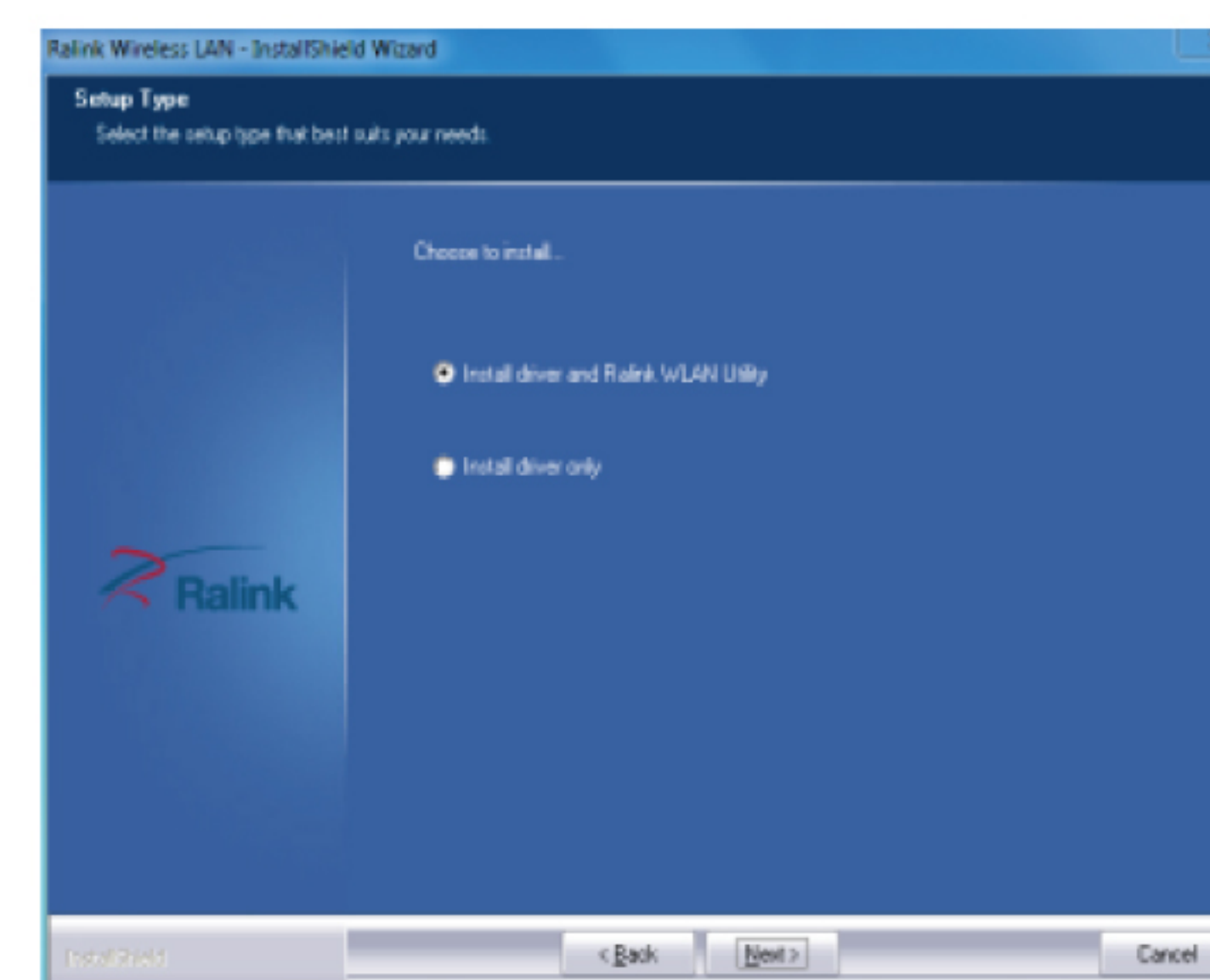


- 2.1.3 Select "I accept the terms of the license agreement" and click "Next".



4

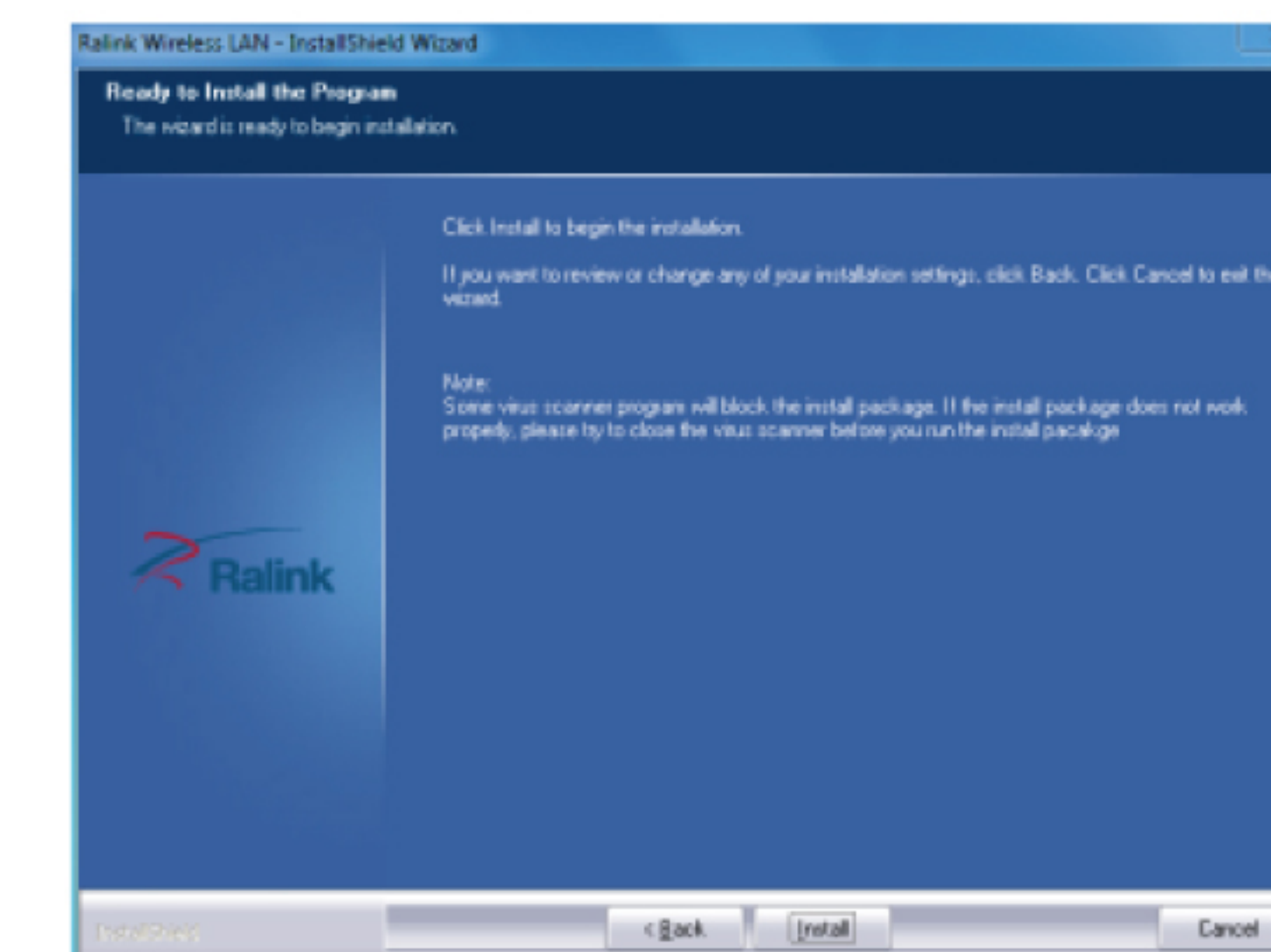
- 2.1.4 Two set up types are provided: one is "Install driver and Ralink WLAN utility",the other is "Install driver only".



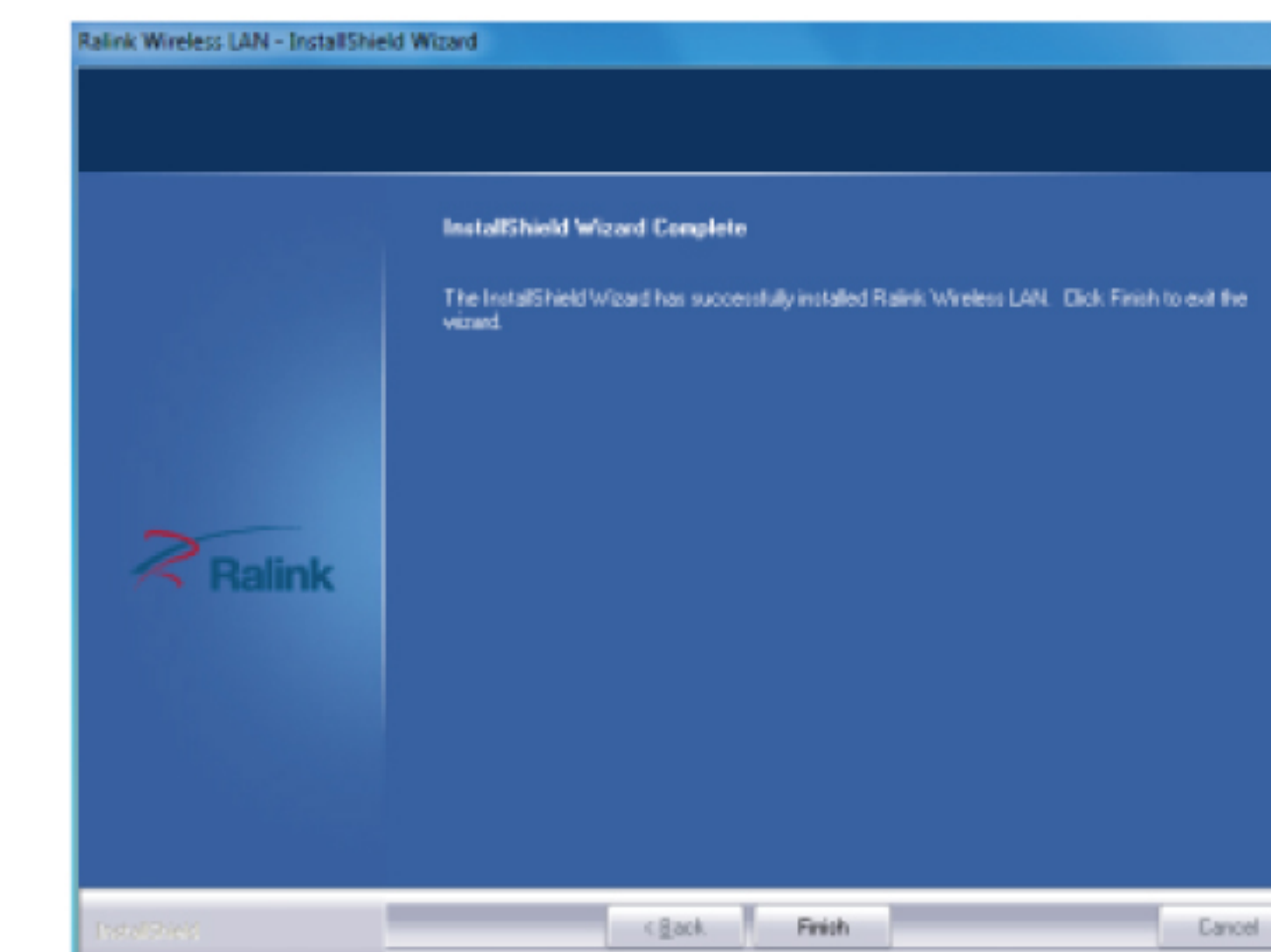
NOTE: you may select the second method when you are accustomed to use the WINDOWS built-in wireless configuration program.However, this program doesn't support AP mode, WPS, and the WPS button on the wireless adaptor. To use these advanced features, the first method is recommended.

5

- 2.1.5 Click "Install" to begin the driver installation.



- 2.1.6 Click "Finish" to complete the installation.

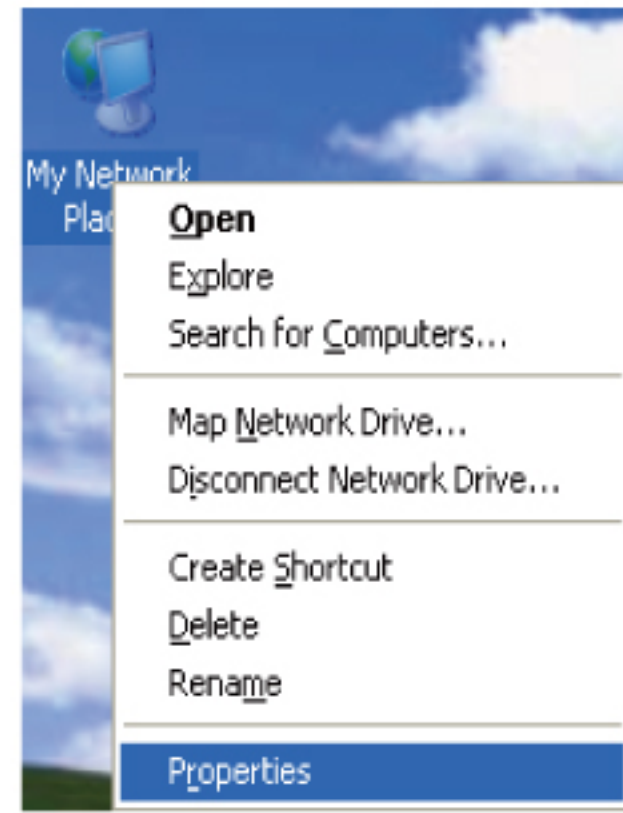


6

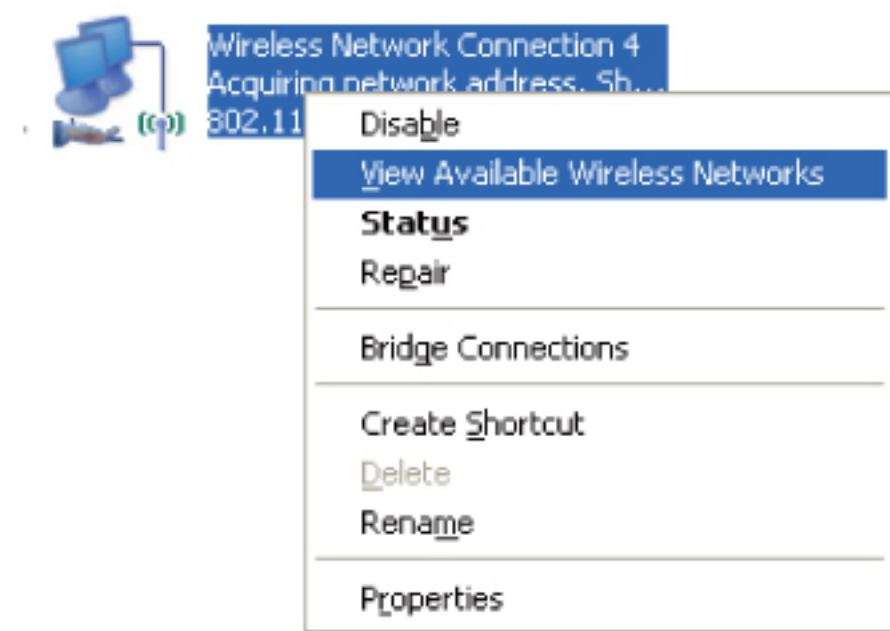
3.0 Using Windows Built In Wireless

3.1 Windows XP Installation:

1. Right click "My Network Places" on the desktop and select "Properties".

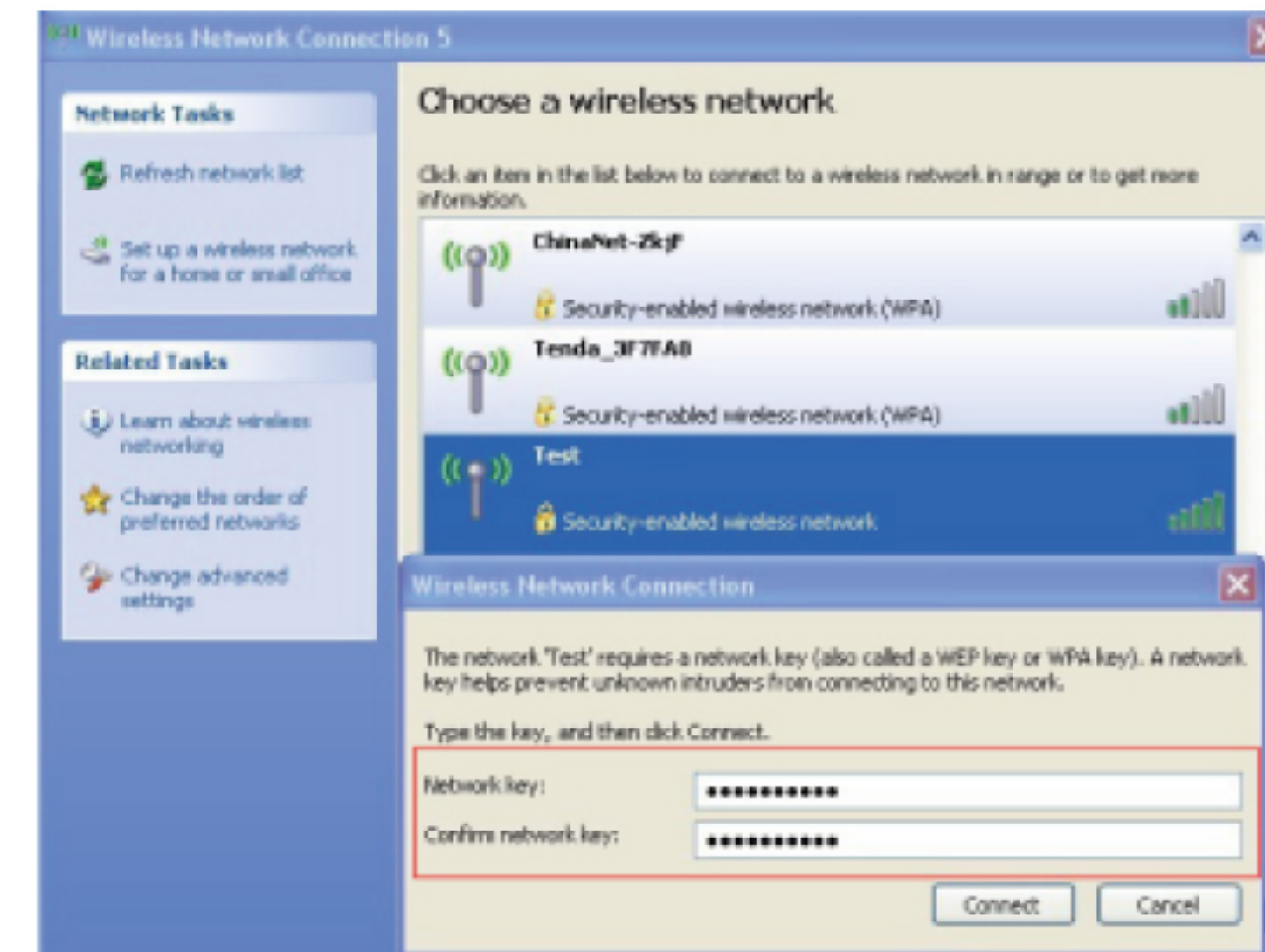


2. Open the network connection. Right click "Wireless Network Connection" and select "View Available Wireless Networks" as shown below.



7

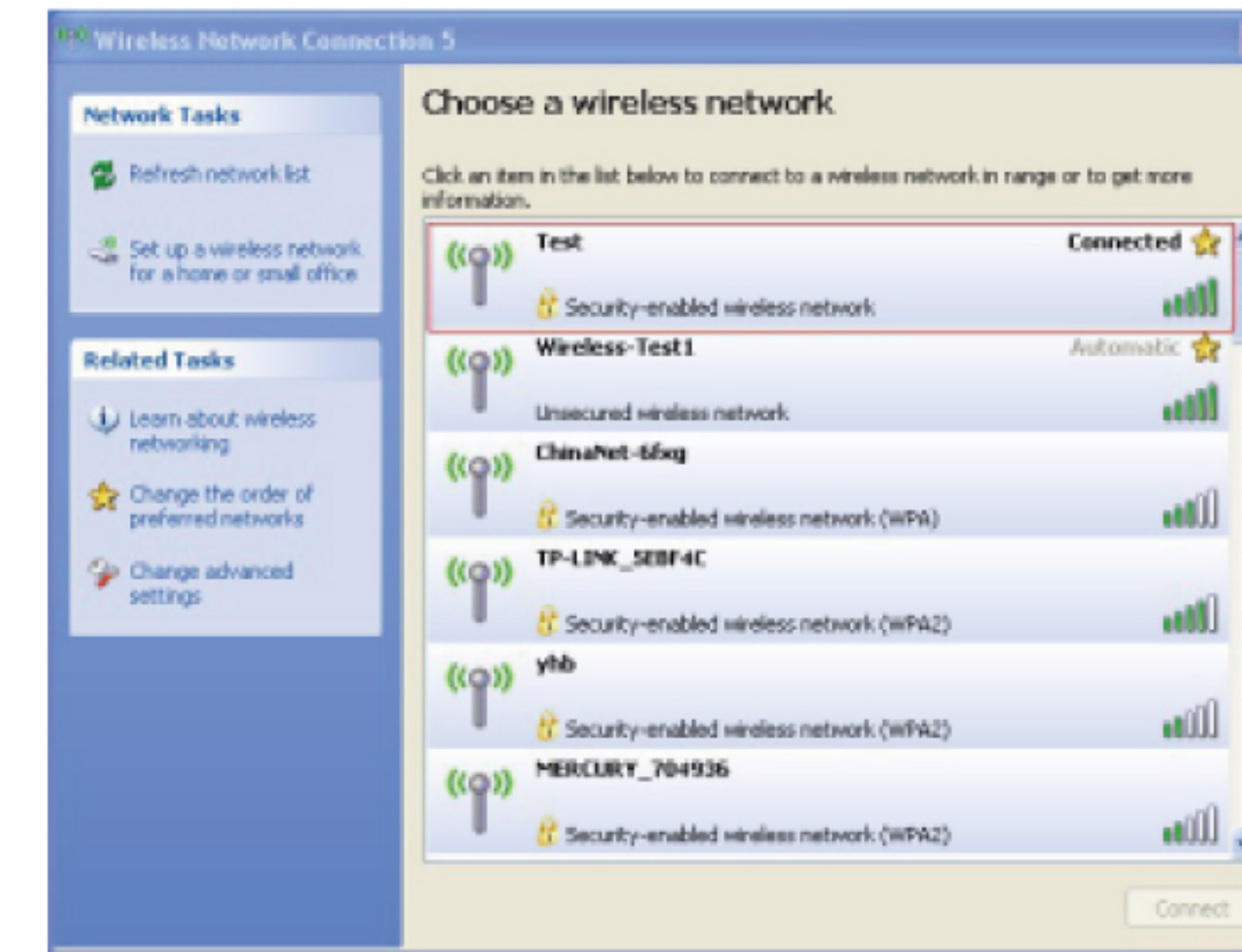
3. On the right of the screen displayed are the currently scanned wireless networks. If the one you want to connect has not been scanned, click "Refresh Network List" to update the network list. Select the wireless network you want to connect, and click "Connect" or double click this wireless network. Input the key in the key dialogue box (the key input is case-sensitive) then click "Connect".



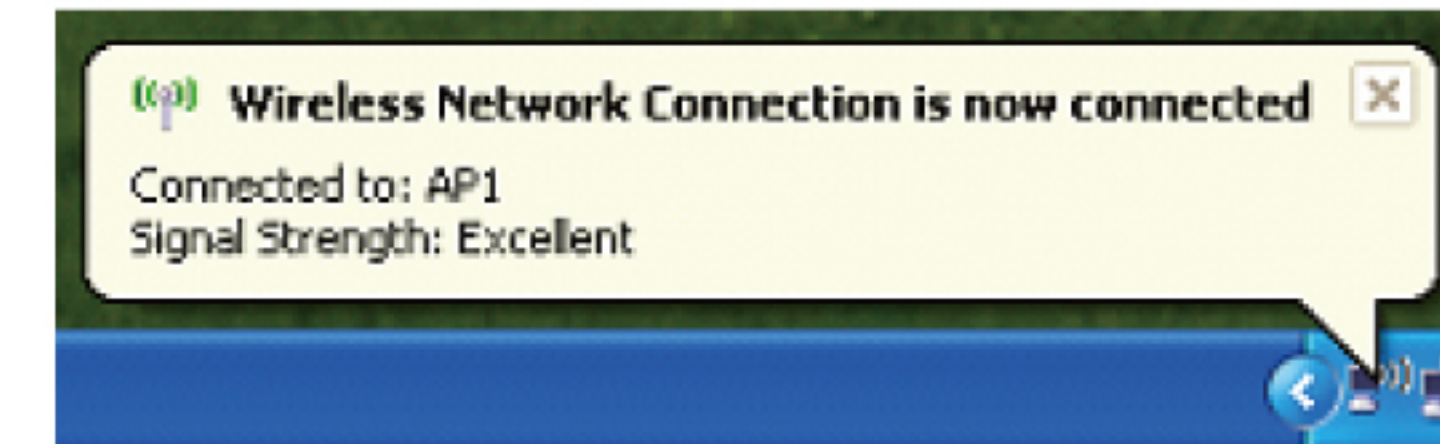
NOTE: If the wireless device you are connecting to is not encrypted, the key dialogue box will not pop up.

8

4. When it shows "Connected" as the picture below, then you can enjoy wireless access to Internet now.



5. The pop-up window in the bottom right hand corner will indicate the connected status



9

3.2 Windows 8.1, 8 & 7 Installation:

1. Click the wireless connection icon in the lower right corner of the computer's desktop to view the available wireless networks. Select the wireless network you wish to connect to and click "Connect" or double click the wireless network to connect. If you can't locate the correct one then please click the refresh icon in the upper right corner to update the list.
2. If the wireless network you are connecting to is encrypted, you'll be prompted to enter the password. Click "Ok" after you have entered the correct password.
3. It will show "Connected" after successfully paired. You can Disconnect, view the current status or modify the wireless network properties by right clicking the current wireless network.

10

Specifications:

Chipset	Ralink RT3070
Standard	IEEE 802.11b/g/n
Interface	USB 2.0 and 1.1 compliant
Antenna Type	Fixed 9dBi dipole antenna
IP Rating	IPX5
Transmitter Power	28 ± 1.5dBm (1000 mw)
Power consumption	Transmit<1000mA; Receive<600mA
Operating Range	Up to 1000 meters (line of sight)
Frequency	2.4~2.4835GHz
Modulation Method	IEEE 802.11b: DBPSK / DQPSK / CCK. IEEE 802.11g: BPSK / QPSK / 16QAM / 64QAM
Data Transfer Rate	802.11b: 1, 2, 5.5, 11Mbps. 802.11g: 6, 9, 12, 18, 24, 36, 48, 54Mbps. 802.11n: up to 150Mbps
Security	WEP (64/128/256bit). WPA, WPA-PSK, WPA2, WPA2-PSK, TKIP/AES
Operating Channel	Channel 1~11 (U.S. and Canada). Channel 1~13 (Europe and other regions)
Operating Temperature	0°C~55°C (32°F~131°F)
Storage Temperature	-40°C~70°C (-40°F~158°F)
Relative Humidity	10% ~ 90%, non condensation
Storage Humidity	5%~90%, non-condensing
Dimensions	460(L)×27(W)mm

11

Software Compatibility:

	32-bit	64-bit
Windows 8.1	✓	✓
Windows 8	✓	✓
Windows 7	✓	✓
Windows Vista	✓	✓
Windows XP	✓	✓
Windows 2000		✓
Mac OS®	✓	10.6+
Linux		✓

Product Maintenance:

1. Please keep the product away from excess water and high humidity environments to guarantee normal performance.
2. Don't directly expose the adaptor to sunlight or excessive heat.

12