

Thank you for purchasing the AC1300 Dual Band USB Adapter

The AC1300 Dual Band Adapter delivers powerful wireless AC technology to your desktop or notebook computer. Simply plug the adapter into an available USB port and connect to a wireless network to access a secure, high-speed internet connection - 2.4GHz or 5GHz. And with integrated Dual Band technology, you'll have reduced Wi-Fi interference to maximize throughput for faster streaming, gaming, and Skype calls.

In the box

- 1 x AC1300 Dual Band Adapter
- 1 x Drivers CD
- 1 x Quick Guide

System Requirements

- At least one USB 3.0 / 2.0 port
- Windows XP / Vista / 7 / 8 / 8.1 / 10 (32/64bits)
- MAC OS 10.4 ~ 10.9

AC1300 Dual Band USB Adapter



WL-WN688U3



Quick Installation Guide

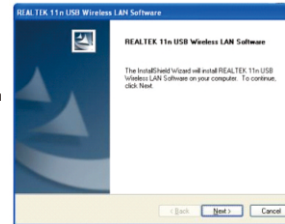
REV1.0

01

IMPORTANT: For proper operation, do not connect the AC1300 Dual Band Adapter to your computer before you install the software. If you do, wait for the Found New Hardware screen to display and click **"Cancel"**; otherwise, the installation process will likely be adversely affected.

Insert the included setup CD in the CD-ROM Drive and start the Setup. exe program.

To start the installation, please click on the **"USB 802.11AC Adapter"**

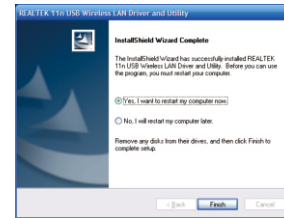


Wait for the installer to run

Click **"Next"** to continue with the installation.

02

The installer will automatically install the program. When done you will see the picture like below. Pls select **"Yes, I want to restart my computer now"** and click **"Finish"** to reboot your computer.



With the computer now turned on, insert the AC1300 Dual Band Adapter into an open USB port.

03

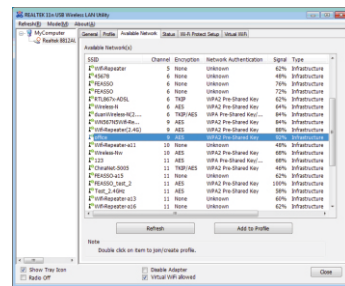
Configuration

Once the installation is complete, you can configure the AC1300 Dual Band Adapter to connect to a wireless access point (AP). The wireless configuration utility will start automatically, and you'll also find a tray icon at the lower right in your Windows systems tray.

1. Click the tray icon and select the icon to Open Config Utility.

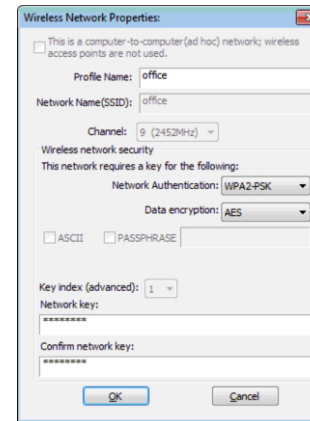


2. The configuration utility will scan for wireless networks within range. Click **"Refresh"** to refresh the list of available wireless networks. To join a particular network that displays, just select it and click **"Add to Profile."**



05

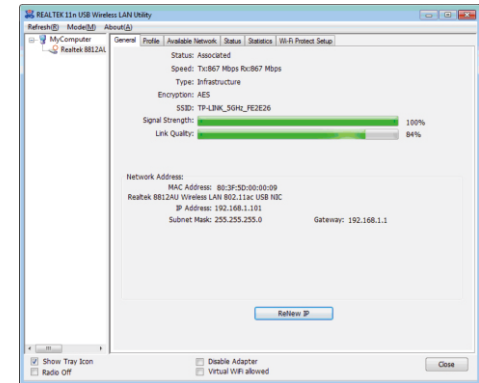
3. If the wireless network uses encryption, you need to input the correct encryption key. The configuration utility automatically suggests the correct authentication type (see the drop-down list), and you should not change the suggested value.



NOTE: For WPA/WPA2 networks, you need to select the correct encryption type, as well (AES or TKIP). These settings depend on how the wireless network is set up. Only the owner of the wireless network can provide the required information.

06

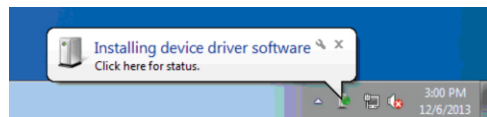
4. If the wireless access point is successfully connected, you'll see.



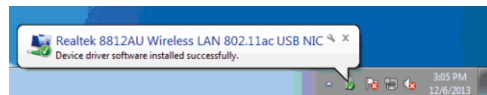
NOTE: For advanced settings and additional features of the AC1300 Dual Band Adapter, refer to the user manual on the enclosed CD.

07

Status screen will display, indicating that the installation is in progress. No action is needed at this point.



When the Completing the Found New Hardware Wizard screen displays, it indicates that the installation has been successfully completed and your AC1300 Dual Band Adapter is ready for configuration.



04