



AC600 Dual Band Wi-Fi USB Adapter

Quick Install Guide

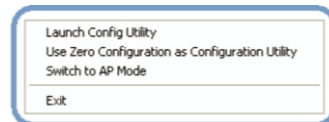
MANUAL
REV.E2

01 WIRELESS USB ADAPTER

Configuration

Once the installation is complete, you can configure the Wireless Adapter to connect to a wireless access point (AP). The wireless configuration utility will start automatically, and you'll also find a tray icon at the lower right in your Windows systems tray.

Right-click on the Mediatek icon  in the task bar in the bottom right hand corner of your screen.



Lets you change the operation mode of the Utility.

- **Launch Config Utility:** Select this option to display the utility's main screen.
- **Use Zero Configuration as Config Utility:** (Windows XP only) Select this option to use Windows to set up and manage your network connection. Selection of this mode is not necessary in Windows Vista, 7 or higher, as you can use Windows and the Mediatek Utility to manage the Adapter without changing operating modes.
- **Switch to Client + AP Mode:** (Windows 7 and higher only) Select this option to let computers and devices connected to the Mediatek AP access the Internet (or another network to which the Mediatek AP is connected).
- **Switch to AP Mode:** Select this option to use the Utility as an access point and to set up a wireless network of your own.
- **Exit:** Select this option to close the main screen and exit the program. Any wireless connections managed by the Mediatek Utility will be disconnected.

05 WIRELESS USB ADAPTER

Introduction

IMPORTANT: For proper operation, do not connect the Wireless USB Adapter to your computer before you install the software. If you do, wait for the Found New Hardware screen to display and click "Cancel"; otherwise, the installation process will likely be adversely affected.

Insert the included setup CD in the CD-ROM Drive and start the Setup.exe program.

To start the installation, please select displays, read the agreement and click "Next" to accept the terms and continue with the installation.

Wait for the installer to run

When the License Agreement screen displays, read the agreement and click "Next" to accept the terms and continue with the installation.

02 WIRELESS USB ADAPTER






Accessing the Utility's Features

The Mediatek Utility lets you connect to a wireless network and the Internet, set up a wireless network, connect directly to other computers or devices using Wi-Fi Direct, and many more wireless-related features.

From the main screen, you can access the main features of the Utility (A), and find out about the status of your current network connection (B and C). By accessing the menu from the Mediatek taskbar icon.



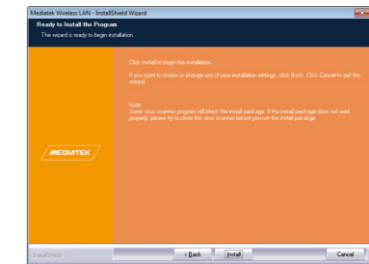
A Click these buttons to open the following screens and access the Mediatek Utility's features.

-  Use the Available Networks screen to find out about available wireless networks and their network status, and to connect to a wireless network.
-  Use the Link Information screens to find detailed information on the status of your wireless connection.
-  Use the Profile Settings screens to set up and use profiles to more quickly connect using frequently used settings, and to set up wireless security.
-  Use the Advanced screens to select your region code, and to install WAPI certificates.
-  Use the About screen to find version information for your Utility.

06 WIRELESS USB ADAPTER

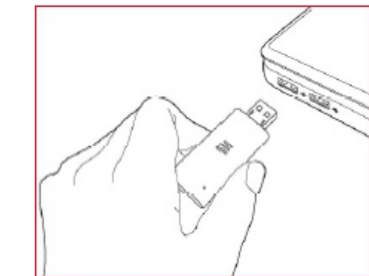
On the second Setup Type screen (below), choose a configuration tool. "Mediatek Configuration Tool" is recommended, as it provides access to all adapter features.

If you prefer to use the tool provided by Windows XP/Vista, select "Microsoft Zero Configuration Tool." Choose either (the setting can be changed after the install), then click "Next."



The installer will automatically install the program. When done Select Yes.

With the computer now turned on, insert the Wireless USB Adapter into an open USB 2.0 port.



03 WIRELESS USB ADAPTER

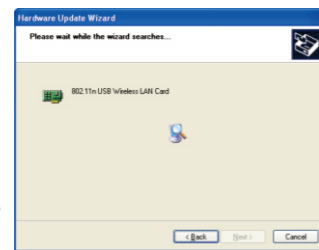
With the Welcome to the Found New Hardware Wizard screen displayed (which is automatic when the adapter is connected to the .computer), select the option "No, not this time" and click "Next."



When prompted with "What do you want the wizard to do?" select "Install the software automatically(Recommended)" and click "Next."






A status screen will display, indicating that the installation is in progress. No action is needed at this point.



When the Completing the Found New Hardware Wizard screen displays, it indicates that the installation has been successfully completed and your Wireless USB Adapter is ready for configuration.

04 WIRELESS USB ADAPTER

B Use these buttons and icons to manage transmission and to find information about your wireless connection.

-  Click this button to enable or disable wireless transmission.
-  Indicates the security status of your connection.
-  Indicates the quality of your wireless connection.

C Use this screen to find information on wireless network settings.

- **SSID:** This shows the name of your wireless network.
- **Rate:** This shows the speed of your connection.
- **Channel:** This is the channel assigned to your connection. Change this if interference is a problem on your network.
- **IP Address:** This identifies the Mediatek Adapter on your wireless network, much like a physical mailing address identifies a house on a street.
- **Mask:** The subnet mask hides your IP address from outside your wireless network.

NOTE: For advanced settings and additional features of the Wireless Adapter, refer to the user manual on the enclosed CD.

07 WIRELESS USB ADAPTER