

XC9020 5MP Camera for Raspberry Pi

The XC9020 5MP Camera is designed to work with Raspberry Pi, so setup is quite easy, although we recommend taking your time with the delicate ribbon cable connections. It is also recommended that you earth yourself, the Pi and camera before starting, so that nothing is damaged by static electricity.

Start by making sure your Raspberry Pi is powered off, and then gently lift the grey tab on the camera socket. It should sit up about 2mm from its lowered position.



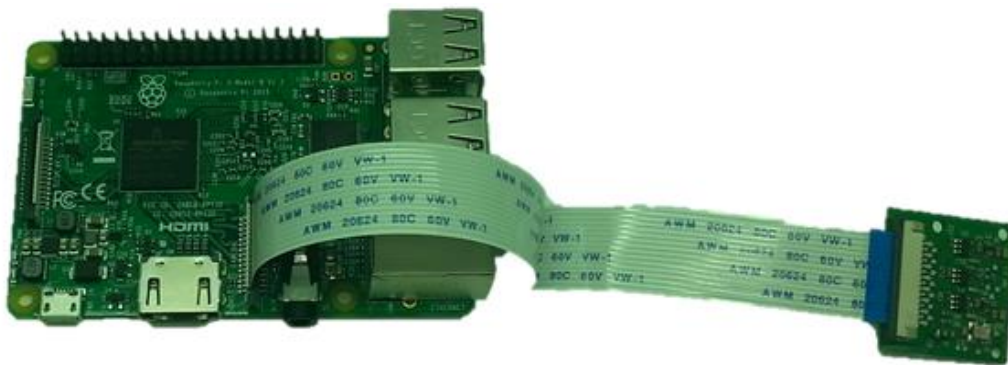
Open the 5MP Camera, and insert the end of the ribbon cable into the camera socket, with the metal contacts facing towards the HDMI socket.



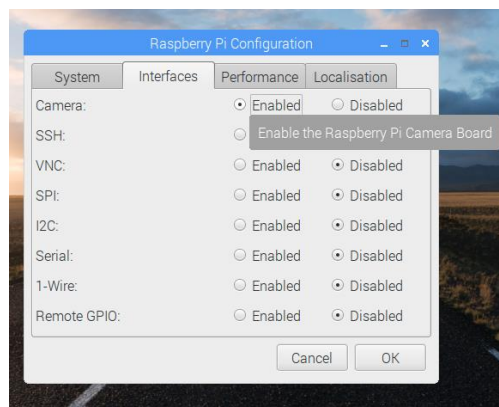
Gently press the grey tabs back down (both at the same time) to lock the ribbon cable in place.



The assembly should look like this when complete.



To get the camera working under Raspbian, go to the Preferences>Raspberry Pi Configuration and click the Interfaces Tab. Click Enabled for Camera, then OK. You will be asked to reboot, so reboot to allow the changes to take effect.



To test the camera, open a terminal, and type:

```
raspistill -v -o test.jpg
```

This will preview the camera's view and then after five seconds, save a snapshot to the /home/pi folder called test.jpg. This command will give you more information about what options you can use with the raspistill command. There is also a raspivid command for capturing video.

```
raspistill --help
```