

# NEXTECH

XC5908



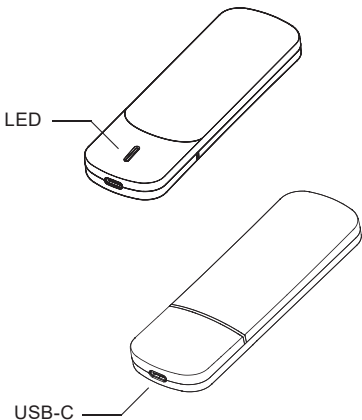
**USB Type-C  
External M.2 SATA/  
NVME SSD Case**

**Instruction Manual**

# Product Introduction

This pocket-sized ABS enclosure is a DIY kit for assembling M.2 NVME/SATA SSD (PCI-E-based), and the speed is USB3.1 Gen2 10Gbps, which is specially designed for mobility, with an ultra-portable design that fits easily into your laptop bag.

## Product Diagram



# Features & Advantages:

## 1. Ultra-high Speed

The USB 3.1 Gen 2 Port supports data transmission speeds of up to 10Gbps for steady and efficient data transfer. Backward compatible with USB 3.1 Gen1 and USB 3.0 at respective speed limits. It provides transfer speeds of more than 900MB/s, that's around 9x faster than traditional external HDDs. Transfer and backup large-sized data files and 4K videos in seconds.

## 2. Never slow down

It will keep a high speed even after several hours of continuous work.

## 3. Auto Sleep (10 mins)

For energy-saving & reducing power consumption & heat dissipation & prolonging SSD life.

## 4. Low Temperature

The Master IC works at lower temperatures.

The high-quality ABS shell with UV coating, provides the sense of tactility temperature is being minimised.

## 5. Easy Setup

Hot-swappable; Fully bus powered; Plug and Play; No Driver required.

## 6. Broad Applicability

It works for mobile phones, tablets, laptops, desktop computers and other hosts that are equipped with USB Type-C and Thunderbolt 3 ports.

## 7. Special Applicability

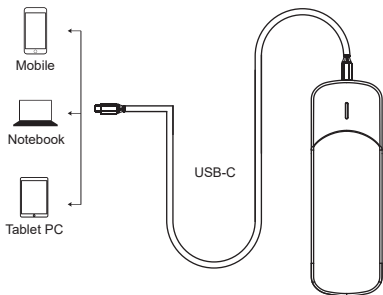
Only applicable for M.2 NVMe M-Key or B+M Key SSD (PCIe-based). DOES NOT support M.2 SATA based SSD (NGFF). Applicable to 4 sizes of SSD: 80mm (2280), 60mm (2260), 42mm (2242) and 30mm (2230).

## 8. System Compatibility

Support Windows 7 or above, Mac OS 10/10.5 or above, Linux, Android, iOS

Product Material	ABS with UV plating
Transfer Rate	USB 3.1 Gen2 up to 10 Gbps
Interface Type	M.2 NVME/SATA to USB 3.1 Gen2(USB-C)
SSD Capacity	2TB Max.
Support SSD Protocol	M.2 NVME/SATA M Key, B+M Key (PCIe based)
Support SSD Size	2230, 2242, 2260, 2280mm
Support System	Windows/Mac OS/Linux/Android/iOS
Indicator Light	White LED

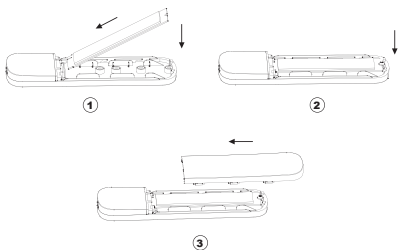
## Connection



## Package Information

- 1 x M.2 NVME/SATA SSD external enclosure
- 1 x USB-C to C cable
- 1 x User manual

# Installation



## Notes:

1. Only support NVME/SATA M-Key or B+M Key M.2 SSD (PCIe-based).
2. To utilise the 10Gbps data transmission rate, the USB 3.1 interface on source device should be USB 3.1 Gen 2. For some sources, that comes with USB 3.1 Gen 1, then the max speed is 5Gbps.
3. It is normal for the case to heat up since the high-speed NVME/SATA M.2 drives generate a lot of heat while working.
4. Most of the new SSDs need to be initialised, partitioned and formatted.

Distributed by:  
Electus Distribution Pty. Ltd.  
320 Victoria Rd, Rydalmere  
NSW 2116 Australia

[www.electusdistribution.com.au](http://www.electusdistribution.com.au)

Made in China



R-NZ