


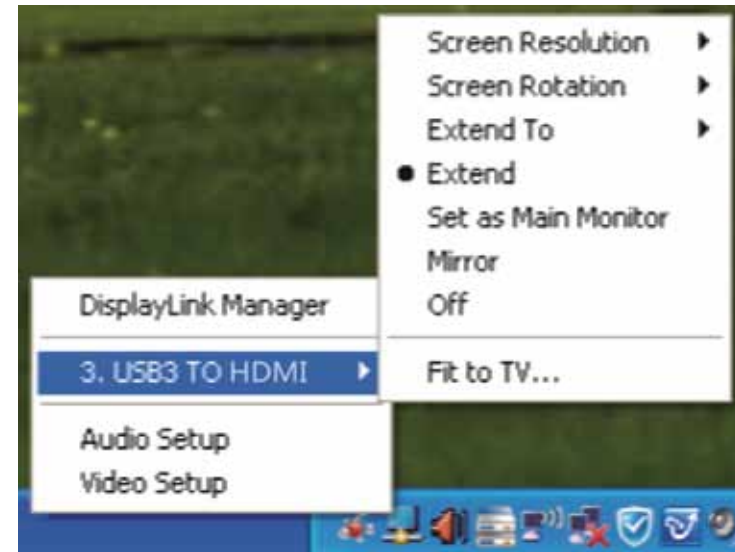
USB 3.0 to HDMI Converter



User Manual

Installation

1. Insert the supplied CD into your computers CD drive.
Double click "Display Link_7.1M1" to launch and install the software.
After installation ,please restart yoour computer.
2. Connect your adaptor to your computers USB port, connect one side of your HDMI lead to the adaptor and the other end to your monitors HDMI port. An icon  will appear at the bottom right menu bar.
By right clicking on this icon you are able to enter the functions menu.



Trouble Shooting

1. When you are playing a movie and you drag it to another screen to extend your view it doesn't work.
Try changing to a different media player eg. KMPlayer
2. The Font looks blurred and distorted.
Ensure you set the resolution in the settings to match that of your monitor
3. The pictures are incomplete on your display.
Ensure that the screens that you are using are the same resolution