

# Y-3651 Cloud Dock

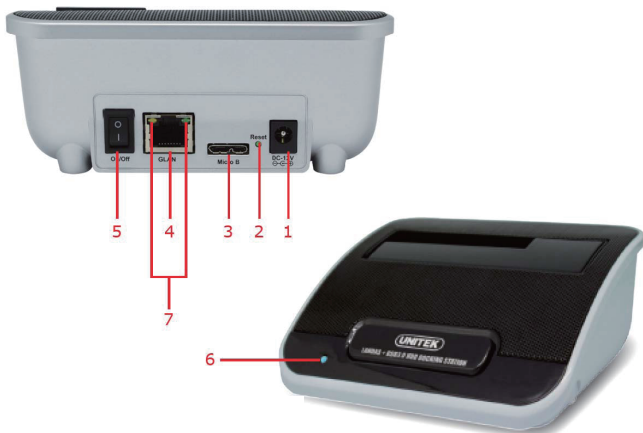
## Quick start Manual

Version 1.0



|                  |             |
|------------------|-------------|
| Setting          |             |
| Default IP       | 169.254.0.1 |
| Default User     | admin       |
| Default password | admin       |

# Product Component Description



- 1、 Power plug (input: DC 12V/2A)
- 2、 Reset button
  - a) For restore the default setting:
    - i. Turn on and Hold the Reset button with 5 seconds at the same time.
- 3、 USB connect
  - a) Support USB3.0, and Backward compatibility with USB2.0 or below.
- 4、 Network connect port
  - a) RJ-45, 10/100/1000mbps, Auto detect
- 5、 Power On/Off switch
- 6、 Power and Loading signal LED (in Red and Green)
  - a) Green – Turn on means the network is connected
  - b) Red – Flashing means in a data transfer process
- 7、 Network status LED
  - a) Green – Turn on means the network is connected
  - b) Yellow – Flashing means in a normal data transfer process

---


**Safety Remind:**

Please provide for direct sun light, heat, electromagnetic radiation, high-altitude regions (Humidity >90%), high-temperature (>35°C/95°F).

Please place it on a stable and without vibration environment to provide HDD or printer head damaged. Please don't use more than 12V/2A DC input. And please remind don't touch the metal part to provide electric shock. Remove the cables after safety remove on PC, remove the HDD after turn off Y-3651.

Please remind to use the original PSU that you bought with the Y-3651.

## 1、 Before Use

- a) Connect the Y-3651 with the router
  - i. First, we need to install the JAVA virtualizer on the PC.
    - ii. Double click the Java icon  in the CD, it will install and prepare the Java environment automatic.
- b) Connecting setting.
  - i. we can connect Y-3651 and PC via USB3.0 cable



- ii. we can also connect Y-3651 and PC via a router



## 2、 Turn on the device, create the connect function setting.

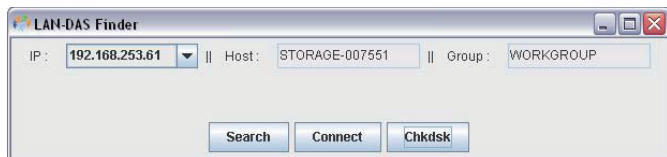
a) Turn on device via the power switch, wait about 50 seconds.

b) Using “SDisk.jar”

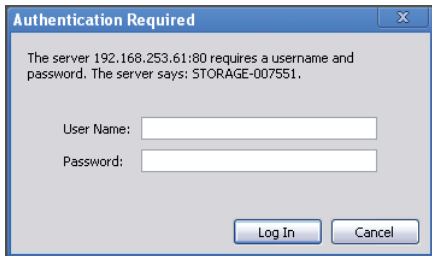


SDisk.jar  
Executable Jar File  
71 KB

to search as below:



c) Click the “Search” to implement searching device. The log-in pop-up window will be showed, while searching is finished. (Default password: admin.)



### 3、 Enter the functional setting interface, after log-in.

Status  
Network  
Maintenance  
Samba Server  
WebDAV Server  
FTP Server  
BitTorrent  
Media Server

| System Information |  |
|--------------------|--|
| Host/Group Name    | STORAGE-007551 / WORKGROUP <input type="button" value="Change"/>   |
| Admin/Password     | admin / ●●●● <input type="button" value="Change"/>                 |
| Date/Time          | 2012/03/22 17:19:10 GMT 8:00 <input type="button" value="Change"/> |
| Firmware Version   | JCS358E-1.03z LOADER 1.04U W1.05                                   |
| Codepage           | English <input type="button" value="Apply"/>                       |
| Web Language       | English  |

| Network Information |  |
|---------------------|--|
| Internal IP         | 192.168.253.61                                 |
| External IP         | 223.255.182.82                                 |
| MAC Address         | 00:24:8c:00:75:51                              |
| PPPoE               | 0.0.0.0 <input type="button" value="Connect"/> |

| Server Information |  |
|--------------------|--|
| ENABLE / DISABLE   |  |
| DHCP Server        | <input type="radio"/> <input checked="" type="radio"/> |
| Samba Server       | <input checked="" type="radio"/> <input type="radio"/> |
| WebDAV Server      | <input checked="" type="radio"/> <input type="radio"/> |
| FTP Server         | <input checked="" type="radio"/> <input type="radio"/> |
| Media Server       | <input checked="" type="radio"/> <input type="radio"/> |

| Interface Information |                                  |
|-----------------------|----------------------------------|
| Disk ID               | Seagate ST3160811AS              |
| Capacity              | 149.04 GB Free / 149.05 GB Total |

- i. Status: real-time operating statuses, function on/off
- ii. Change work group and device name: Statuses > Host/Group Name > Change
- iii. Change Management log-in Password: Statuses > Admin/Password > Change
- iv. Change Device Date and Time: Statuses > Date / Time > Change

## 4、 Network setting:

Status  
Network  
Maintenance

Samba Server  
WebDAV Server  
FTP Server  
BitTorrent  
Media Server

| IP Setting   | PPPoE                                       | DDNS | Service Port                         |
|--|---|------|--------------------------------------|
| <input type="radio"/> Automatic IP <input checked="" type="radio"/> Static IP as below |   |      |                                      |
| IP Address   | <input type="text" value="192.168.253.61"/> |      |                                      |
| Subnet Mask  | <input type="text" value="255.255.255.0"/>  |      |                                      |
| Gateway  | <input type="text" value="192.168.253.2"/>  |      |                                      |
| Primary DNS  | <input type="text" value="192.168.253.2"/>  |      |                                      |
| Secondary DNS  | <input type="text" value="0.0.0.0"/>        |      |                                      |
|  |   |      | <input type="button" value="Apply"/> |

- i. IP Setting:
  1. Automatic IP >>> Auto IP section
  2. Static IP as below >>> Manual IP setting
- ii. PPPoE: connect to the ADSL modem over Ethernet and in plain Metro Ethernet networks.
- iii. DDNS: the updating in real time of Internet Domain Name System (DNS) name servers to keep the active DNS configuration of their hostnames, addresses and other information up to date.
- iv. Service port: Port for access this page for setting.

## 5、 Maintenance settings

Status  
Network  
Maintenance  
  
Samba Server  
WebDAY Server  
FTP Server  
BitTorrent  
Media Server

Disk Utility Firmware Reboot Default

Sleep Time(minutes) DISABLE

Format Disk Format help

| S.M.A.R.T. |                              |         |
|------------|------------------------------|---------|
| ID         | Attribute Name               | Value   |
| 5          | Reallocated Sectors Count    | 0       |
| 9          | Power-On Hours               | 6156    |
| C          | Power Cycle Count            | 1293    |
| C2         | Temperature                  | 42      |
| C5         | Current Pending Sector Count | 1       |
| C6         | Uncorrectable Sector Count   | 1       |
| HDD Status |                              | CAUTION |

- i. Disk Utility:
  1. Sleep Time(Minutes):
    - a) Select HDD access sleep mode when no operation
  2. Format the HDD into exFAT.
    - a) If your HDD is already in exFAT format, you need not to format it again. Other else, please format.
- ii. Firmware: update to the latest version after download the files from Official Website
- iii. Reboot: reboot the device in 1 min as same as press reset button
- iv. Default: Restore all setting to the default version. This is same as Turn on and Hold the Reset button with 5 seconds at the same time.

## 6、 Samba server setting.

The screenshot displays the Samba Server configuration interface, divided into three main sections:

- Samba Server**: The main title bar.
- Account List**: A table with columns for [User Name], [Password], [Access], and [Status]. It contains two entries: 'Guest' with password '-----', access 'RW', and status 'ENABLED'; and 'kpo' with password '\*\*\*\*\*', access 'RW', and status 'ENABLED'. Buttons for 'New', 'Modify', 'Disable', and 'Delete' are located above the table.
- Folder List**: A list of folders including PUBLIC, BT, kpo, kpo\_mobile, and kpo\_ftp. Buttons for 'Create', 'Rename', and 'Delete' are located above the list.
- Sharing List**: A list of shares including PUBLIC, kpo, kpo\_mobile, kpo\_ftp, and BT. A green right-pointing arrow is positioned between 'kpo' and 'kpo\_mobile', and a red left-pointing arrow is positioned between 'kpo\_ftp' and 'BT'.

- i. You can create and set the permission of this server for intranet. You may browse by IP address; it is like the file sharing of Windows.
  1. Account List is used to manage user and their permission
  2. Folder List shows the files in the HDD and you may set share specified file by press the arrows.
  3. Share List shows the file that you have set to share with the related user.



## 7、 WebDAV Server setting

Status  
Network  
Maintenance

Samba Server  
WebDAV Server  
FTP Server  
BitTorrent  
Media Server

WebDAV Server help  
Internal URL: http://192.168.253.61:8081/webdav/

Account List New Modify Disable Delete

| [User Name] | [Password] | [Access] | [Status] |
|-------------|------------|----------|----------|
| Guest       | *****      | RW       | ENABLED  |
| kpo_mobile  | *****      | RW       | ENABLED  |

Folder List Create Rename Delete

PUBLIC  
BT  
kpo  
kpo\_mobile  
kpo\_ftp

Sharing List  
PUBLIC

- i. You can create and set the permission of this server for internet and intranet that browse by smart phone / tablet apps.
  1. Account List is used to manage user and their permission
  2. Folder List shows the files in the HDD and you may set share specified file by press the arrows.
  3. Share List shows the file that you have set to share with the related user.
- ii. Please download the webdav apps the related market, you may search the keyword “webdav”. Most the Apps have the similar function, please don't worry.

## 8、 FTP Server setting:








The screenshot displays the FTP Server configuration interface, divided into three main sections:

- Account List:** A table with columns for [User Name], [Password], [Access], and [Status]. It includes buttons for New, Modify, Disable, and Delete. The table contains two entries: 'anonymous' with password '-----' and 'kpo\_ftp' with password '\*\*\*\*\*', both with 'RW' access and 'ENABLED' status.
- Folder List:** A list of folders including PUBLIC, BT, kpo, kpo\_mobile, and kpo\_ftp. It has buttons for Create, Rename, and Delete. A green arrow button points from this list to the Sharing List.
- Sharing List:** A list showing the PUBLIC folder. A red arrow button points from this list back to the Folder List.

- i. You can create and set the permission of this server for internet and intranet that browse by FTP software.
1. Account List is used to manage user and their permission
  2. Folder List shows the files in the HDD and you may set share specified file by press the arrows.
  3. Share List shows the file that you have set to share with the related user.

## 9、BitTorrent setting:

Status  
Network  
Maintenance  
  
Samba Server  
WebDAV Server  
FTP Server  
BitTorrent  
Media Server

- i. You can download the BT/PT file without connect to the PC. It is a good way to save electricity and time.
  1. Download path: the place you decide to save the file
  2. Upload your Torrent File: upload the seed of the BT/PT file here and it will start to download automatic.
  3. Download Queue: It shows all download items
    - a)  to start or restart the download.
    - b)  to pause the download
    - c)  to stop the download
    - d)  to cancel and delete the download
    - e)  to set the BT option
    - f)  to set the device will send out a mail when the download is finished.
    - g)  set priorities of the file in Download Queue.

## 10、 Media Server:

|               |  |
|---------------|--|
| Status        |  |
| Network       |  |
| Maintenance   |  |
| Samba Server  |  |
| WebDAV Server |  |
| FTP Server    |  |
| BitTorrent    |  |
| Media Server  |  |

| Media Server          |           |
|-----------------------|-----------|
| Photo Folder          | PUBLIC    |
| Music Folder          | PUBLIC    |
| Video Folder          | PUBLIC    |
| iTunes Playlist Cache | Not found |

- You can set Multimedia search function; you can share music, photo and video via network.
- You may specify share in different folder.
- You may also build your iTunes Playlist