



## 2 Bay USB 3.0 SATA HDD RAID Enclosure XC-4688 User Manual

### Box Contents:

- 1 x USB 3.0 2 Bay RAID HDD Enclosure
- 1 x Power Supply
- 1 x USB 3.0 Cable
- 1 x HDD Mounting Screws
- 1 x Screwdriver

### OS Support:

Windows 2000/ Me / XP / Vista / 7 / 8 / 8.1/ 10 and above,  
Mac OS 9.1/10 and Linux

Distributed by:  
TechBrands by Electus Distribution Pty. Ltd.  
320 Victoria Rd, Rydalmere NSW 2116 Australia  
Ph: 1300 738 555 Int'l: +61 2 8832 3200 Fax: 1300 738 500  
www.techbrands.com  
Made in China



Pull out the hard drive from the unit.

Install the hard drives into the trays.



Connect the USB cable to the computer.

Connect the USB 3.0 connector to the unit.

Connect the power connector from the power adapter, and plug the power adapter to the power source.

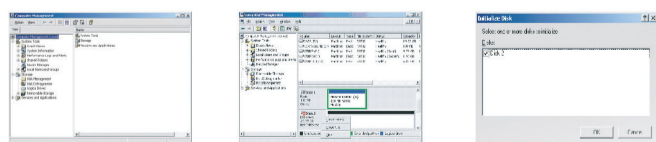


Select the RAID mode when power is off. Power on the unit while holding down the reset button for 5 seconds.

**Note:** Please follow below information on how to partition and format the drives before use.

**Note:** Data will be lost when you reset the unit.

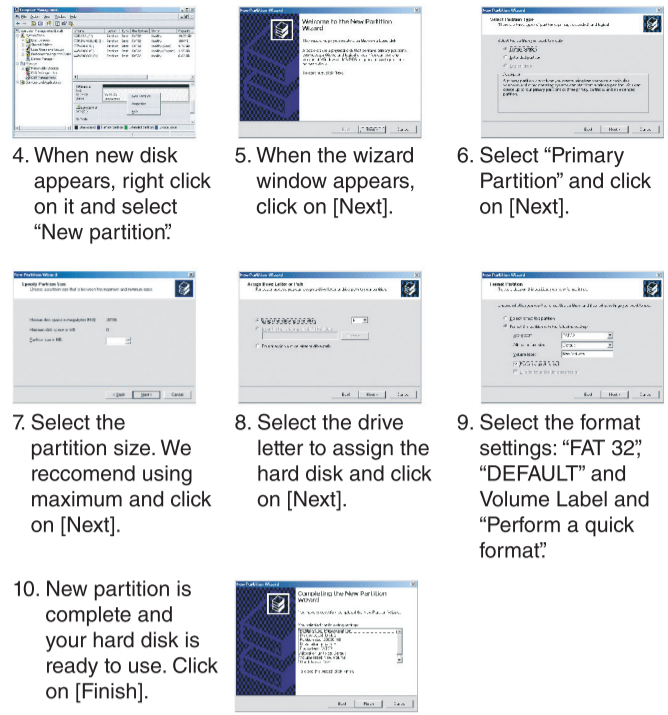
### Partition and Format:



1. Right click on "My Computer" icon and select "Manage". When this window appears, select "Disk Management".

2. Right click on the disk on "New Volume" and select "Initialize Disk".

3. Select the new disk to start with the configuration.



4. When new disk appears, right click on it and select "New partition".

5. When the wizard window appears, click on [Next].

6. Select "Primary Partition" and click on [Next].

7. Select the partition size. We recommend using maximum and click on [Next].

8. Select the drive letter to assign the hard disk and click on [Next].

9. Select the format settings: "FAT 32", "DEFAULT" and Volume Label and "Perform a quick format".

10. New partition is complete and your hard disk is ready to use. Click on [Finish].

### Product Specifications:

Interface:	USB 3.0 Type-A (Backward Compatible to USB 2.0)
HDD Size:	2.5/3.5 inch SATA I/II/III HDDs and SSDs
HDD Capacity:	16TB (2 x 8TB)
RAID Level:	RAID 0, RAID 1, JBOD, Spanning
Max. Transfer Rate:	5Gbps
Compatibility:	Windows 2000/Me/XP/Vista/7/8/8.1/10+, macOS® 9.1/10+
Cooling Fan:	Enclosure: Extruded Aluminium 70mm
Power:	12V 3A mains adaptor supplied
Weight:	1.87kg (without HDDs)
Dimensions:	215(L) x 135(W) x 114(H)mm

### 2 Bay USB 3.0 to SATA Raid Enclosure

- USB 3.0 to SATA Enclosure
- Supports 2.5/3.5 inch Hard Drive
- Supports Auto Rebuild in RAID 1 Mirror Mode
- USB 3.0 Supported, Backward Compatible to USB 2.0
- Convenient Tool-less Design
- Supports Windows 2000 or above, MAC OS 10.3 or above, and Linux
- Supports over 2TB Hard Drives

### Features:



1. RAID Level: RAID 0, RAID 1, JBOD, Spanning
2. USB 3.0 (MAX 5Gbps), USB 2.0 (MAX 480Mbps)
3. DC IN: 12V Power Supply
4. Cooling Fan: 7cm Fan
5. OS Support: Windows 2000 or above, MAC OS 10.3 or above, and Linux

### 8. RAID Level Setting



#### JBOD Mode:

- Each works as a single hard disk, and the data is transferred individually to each hard drive.
- Switch 1 and 2 are off (Both Switch 1 & 2 are up).



#### RAID 1 Mode:

- RAID 1 mode (Mirroring) will provide RAID 1 protection against HDD failure
- Switch 1 is off and Switch 2 is on (Switch 1 up & Switch 2 down)



#### RAID 0 Mode:

- RAID 0 mode (Striping) provides best performance, combining both drives for read/write to both drives.
- Switch 1 is on and Switch 2 is off (Switch 1 Down & Switch 2 Up).



#### Spanning Mode:

- Spanning mode joins both hard drives capacity to provide a large volume. No performance or redundancy in this mode.
- Both Switch 1 & 2 are on (Both Switch 1 & 2 are down).