

## Universal Touch Keyboard User Guide

**IMPORTANT:** Please read this User guide and all safety instruction warnings carefully before any operation. Improper use of this product may result in damage to this or attached products. To ensure the products work well, please never use this in the following conditions:

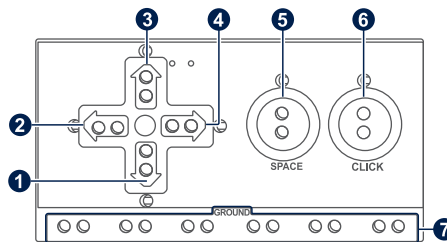
- Children must be supervised to ensure their safety and the product is used and assembled correctly.
- Do not place heavy objects on the board or its components.
- Do not use or store the card or its components in places where there is water. Avoid exposing it to forms of excessive moisture. Water damage is not covered under the warranty and may damage the product

### Parts List & Details:

#### BOARD:

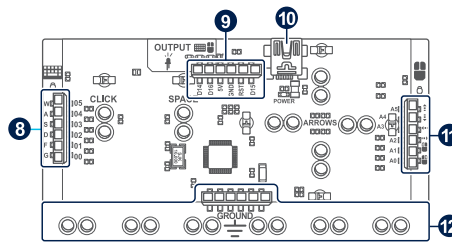
##### Top View

1. Down arrow
2. Left arrow
3. Up arrow
4. Right arrow
5. Space bar
6. Left mouse click
7. Earth



##### Bottom View

8. Keyboard (w, a, s, d, f, g)
9. Output / Expansion header (d14, d16, 5 v, gnd, reset and d15)
10. Micro USB connector
11. Controls (Up, down, left click and right click)
12. Earth



#### CABLES:



USB Type-A to Type B Mini Cable

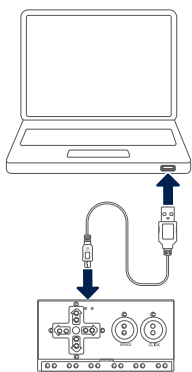


Jumper Wires

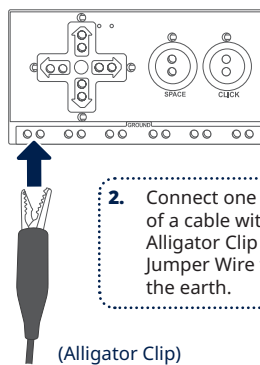


Alligator Clip Leads

### Connection Diagram for any Object:

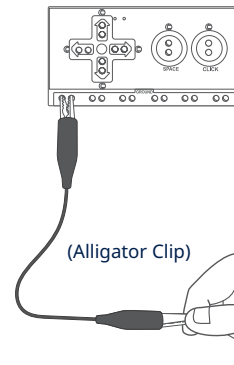


1. Connect the card to the PC using the USB cable.



2. Connect one end of a cable with Alligator Clip or Jumper Wire to the earth.

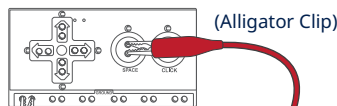
(Alligator Clip)



3. Hold the other end of the Alligator Clip or Jumper Wire to your hand to complete the earth.

(Alligator Clip)

4. Connect another Alligator Clip or Jumper Wire to conductive material such as metallic objects or fruit. (Not all objects will work)



5. Place your finger to on the conductive material to complete the circuit.

(Banana)

The finger closes the circuit & the PC receives the signal and interprets it as if it was a push of that key.  
**Tip:** Test it by using a word processing program.

Distributed by:  
Electus Distribution Pty. Ltd.  
320 Victoria Rd, Rydalmere  
NSW 2116 Australia

[www.electusdistribution.com.au](http://www.electusdistribution.com.au)

Made in China