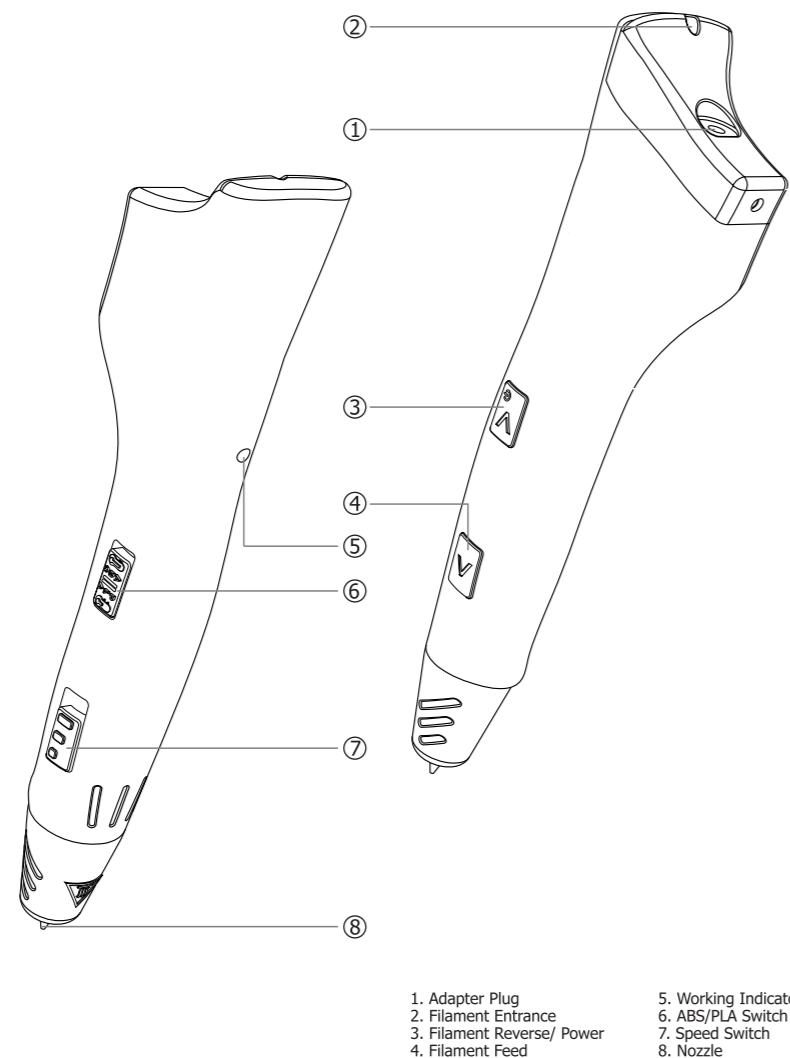


duinotech



**3D Printing Pen
TL4253
Manual**

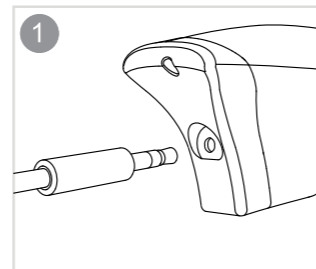


- 1. Adapter Plug
- 2. Filament Entrance
- 3. Filament Reverse/ Power
- 4. Filament Feed
- 5. Working Indicator Light
- 6. ABS/PLA Switch
- 7. Speed Switch
- 8. Nozzle

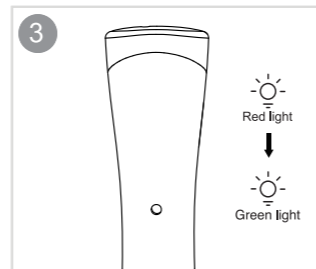
CONTENTS

1*3D pen 1*Power Adapter 1*Pen Holder 3*Filament for Test 3*3D Drawing Stencil
1*USB Cable 1*Manual

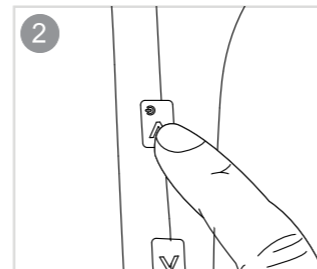
Using the 3D Pen



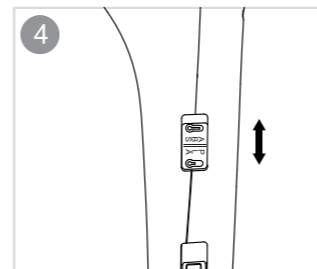
To power the 3D pen, insert the power supply into the rear of the pen.



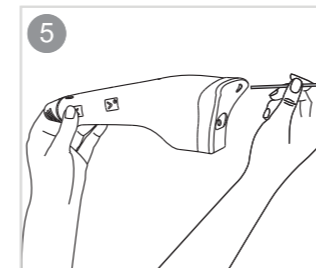
The indicator light will turn red while the unit is heating. Once it is ready to use, the light will turn green.



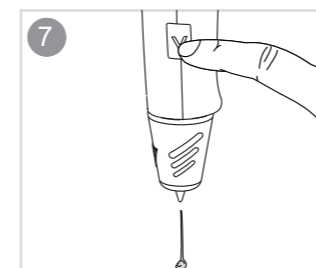
Press the Filament Reverse / Power button to heat up the pen.



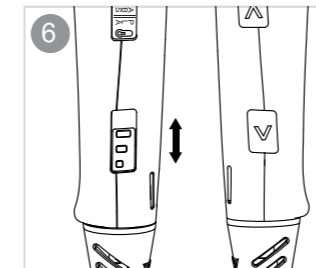
Slide the ABS/PLA switch to choose the type of filament being used. Please note: both the included & spare filament (TL4255) is PLA.



Press the Filament Feed button and insert the filament into the filament hole.



Press the Filament Reverse button to remove the filament.



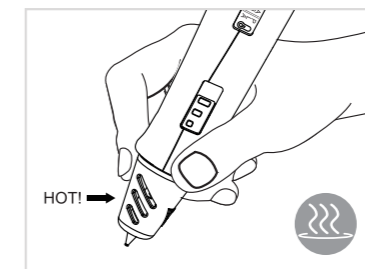
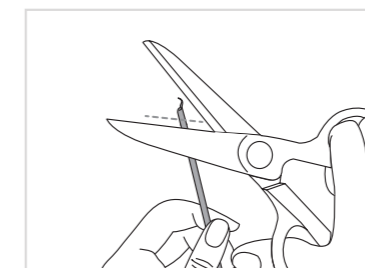
Slide the Speed Switch to adjust the speed. Sliding towards the nozzle will decrease the speed. Press the Filament Feed button to stop feeding filament.



Press and hold the Power button for 3 seconds to turn off the unit.

ATTENTION:

1. This 3D pen is intended for children 14 years and older. Adult supervision is advised when using the 3D pen.
2. When inserting filament into the 3D pen, ensure the filament is cut flat to avoid clogging.
3. While the filament feed is stopped or filament is being removed, the 3D pen will eject remaining filament in the nozzle to avoid clogging.
4. When re-heating the unit, it will take slightly longer to heat up as the nozzle will heat up and clear any filament stuck inside.
5. If the unit is not used for 2 minutes, it will enter Sleep Mode and turn the unit off. To re-heat the unit, press the Filament Feed button.
6. The 3D pen nozzle is extremely hot while in use. To avoid burning, do not touch the nozzle.



Distributed by:
Electus Distribution Pty. Ltd.
320 Victoria Rd, Rydalmere
NSW 2116 Australia

www.electusdistribution.com.au

Made in China