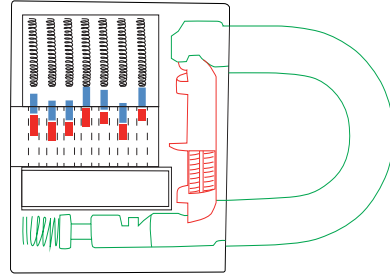


<p>Double Sided Wafers (1-5)</p> <p>Applications: these are designed to pick automotive locks as well as desks, drawers, filing cabinets etc. which usually have double sided wafer locks.</p>	<p>Rakes (6-14)</p> <p>• Applications: these are used for "raking", which is the most common type of lock picking. Raking consists of inserting the pick into the back of the lock and pulling it quickly. The advantage of raking is that it can be used on different kinds of locks.</p>	<p>Hooks (15-20)</p> <p>• Applications: these are great for "single pin picking", i.e. lifting the pins one at a time. Because of the effort required, these are probably the best picks to learn locks and how to pick them. They can be used on a variety of locks too.</p>	<p>Tension Wrenches (21-23)</p> <p>• Applications: these are needed when picking any lock (even when using a pick gun). The wrench is inserted into the bottom of the key hole to apply slight pressure. The pick is then inserted right above it to lift the pins.</p>	<p>Auto Tension Tool (24)</p> <p>• Applications: this is the automotive equivalent of the regular tension wrenches. The tip includes 2 different sizes of gaps to fit most car door cylinders</p>
---	---	--	--	--

1

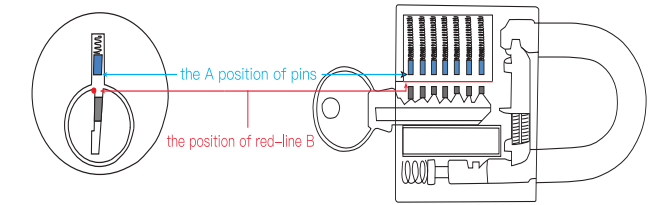
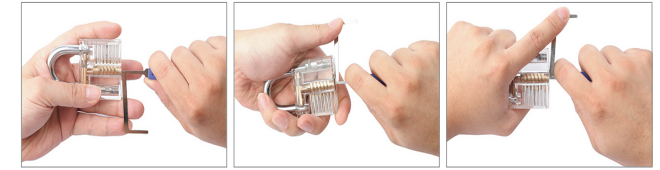
Statement:
The content is only for reference and shall not be used for other purposes.

* First, you must know well the structure of padlock. The padlock has 7 pins inside the lock cylinder (the first pin remains stationary). The inner pin is fixed as a lock core. The theory of unlocking is to keep other 6 pins to remain horizontal and then leave the lock cylinder simultaneously. In such a process, what is particularly important is to try the final suitable force repeatedly and make it act on the wrench (along correction direction of lock's natural rotation) with the suitable force, which will ensure the pins after adjustment not to return to the previous position, adjust the position of each pin one by one, keep them on a horizontal level, then twist the lock cylinder and open the lock.



2

2. Hold the lock by left hand, act the force on the wrench with one or two fingers, take a lock tool, hold the lock by left hand and twist the wrench with the fingers gently. When the position of pin A reaches the position of red-line B, it can stay still, which will be deemed as a suitable force. At this time, remember your feeling as it is a force you need. Keep two hands with suitable force and speed. You must wait with patience. You need to look how the pins of padlock control the lock tools.

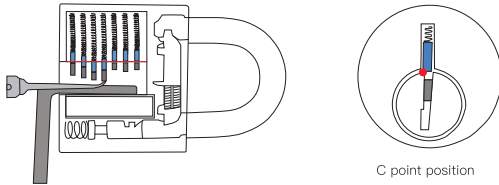


3

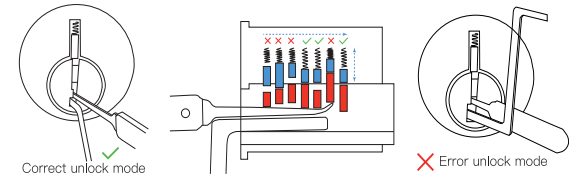
3. You need practice for many times. When it is used for the first time, you may need to find how long you can still need to open the lock. However, through practice for several times, you can open the lock within 1 or 2 seconds and you need not look at the pins and the padlock during the opening. By then, you can learn how to open other locks.

Schematic diagram for torque

Apply rotating pressure on torque tool and make the lock cylinder in a pressure rotating state, which will make the pin be kept in correct position. It will keep the pins of unlocking in correct positions

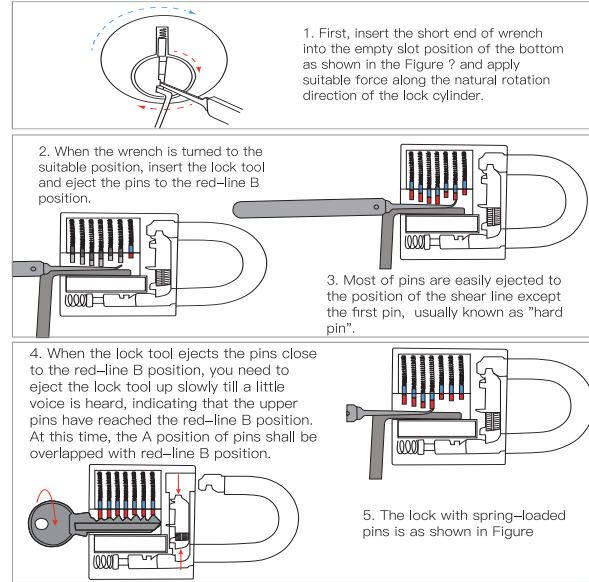


Move the A position of pins to the red-line B, adjust the pins one by one from inside to outside (when you are skilled in operating, you can adjust more pins at the same time). As the lock cylinder is kept at the position as shown in Figure by wrench torque, the pins are clipped at C point so as to ensure A position of pins to be overlapped with the red-line B. Adjust the position of pins one by one and open the lock finally.

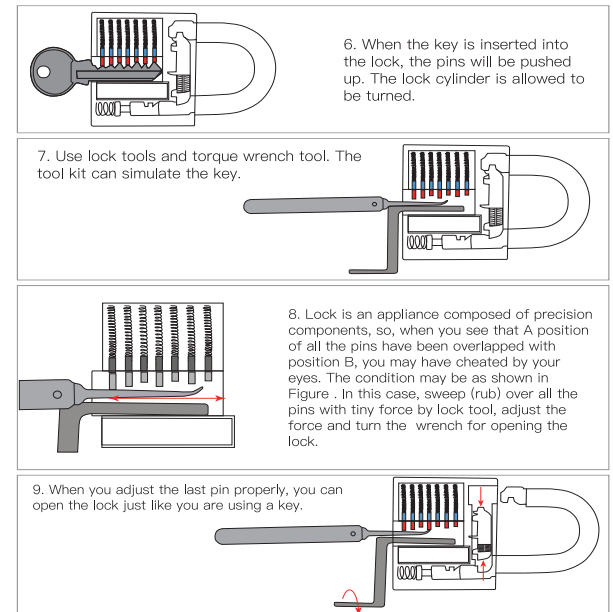


4

The skill of unlocking is just to simulate a key to eject all the pins from A position to the red-line B position with the tool.



5



6