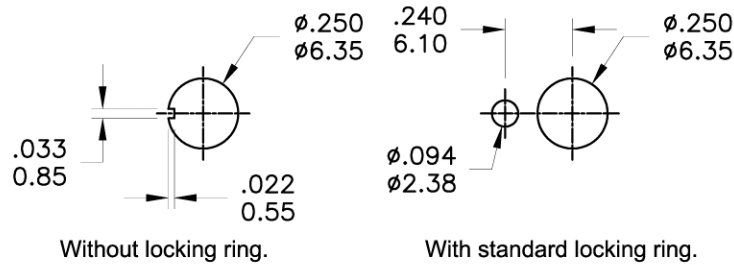
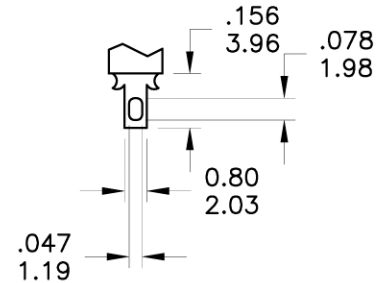


	POS.1	POS.2	POS.3
	ON	OFF	ON
Term. Comm.	2-3	OPEN	2-1
SCHEMATIC		OPEN	

SWITCH FUNCTION



PANEL MOUNTING



SOLDER LUG

SPECIFICATIONS

MECHANICAL LIFE: 40,000 make-and-break cycles.
CONTACT RESISTANCE: 10mΩ max. initial @ 2-4VDC
 100mA for both silver and gold plated contacts.
INSULATION RESISTANCE: 1,000MΩ min.
DIELECTRIC STRENGTH: 1,000 V RMS@sea level.
OPERATING TEMPERATURE: -30°C to 85°C.

MATERIALS

CASE: Dially phthalate (DAP) (UL94v-0).
ACTUATOR: Brass,chrome plated.
BUSHING: Brass,nickel plated.
HOUSING: Stainless Steel.
TERMINAL/CONTACT: Silver plated.

RATING : 2Amps @250VAC
 5Amps @120 VAC or 28 VDC

SCALE : 3 : 2	TITLE	Miniature Toggle Switches	SIZE	A4
TOLERANCE : 0.00 mm ± 0.25mm 0.0 mm ± 0.40mm ANGULAR : ±5°	DWG NO.	ST0336	UNIT	inch mm