



CONCORD

CONNECTING TOGETHER

The logo features the word "CONCORD" in a large, white, sans-serif font. Below it, the tagline "CONNECTING TOGETHER" is written in a smaller, white, sans-serif font. The background is a dark blue-grey color with abstract red and purple geometric shapes on the left and right sides.

**Wireless NVR
QUICK START
GUIDE**

What's in the box?

Congratulations on your new Concord Professional Surveillance System. Inside the box, you will find everything you need to connect your NVR and cameras to your TV or monitor.



NVR Recorder Unit



Cameras x4



HDMI cable



Ethernet Cable



USB Mouse



Mounting accessories



12V NVR Power Supply



12V Power Supply and 13m extension – one per camera

Getting to know your NVR

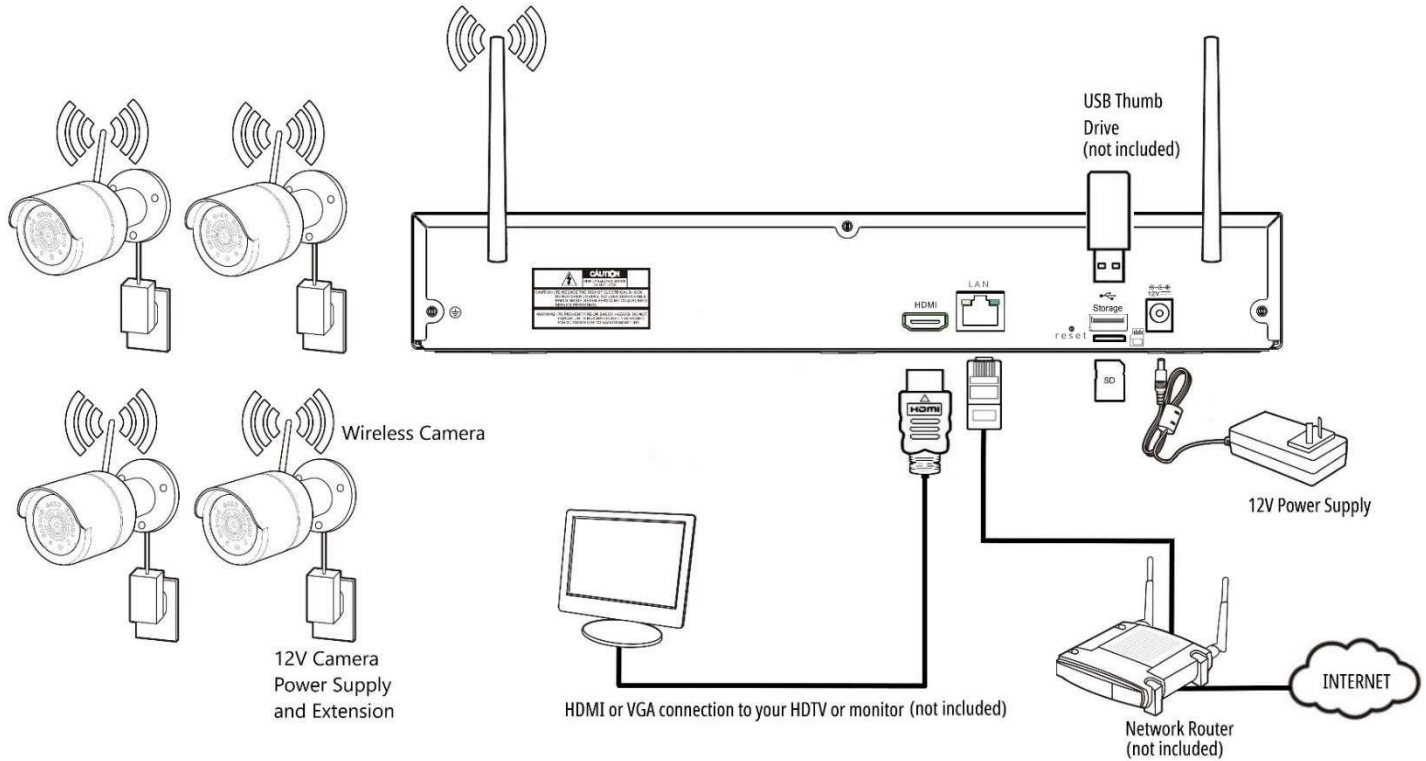


1	Power Input	Follow instructions in Step 1 to connect power.
2	Wireless Antennas	These are packed separately and need to be screwed on.
3	SD Card Slot	Used as extension memory to the HDD.
4	USB Ports	USB ports for mouse or thumb drive to share videos.
5	HDMI Monitor Port	To connect monitors that use an HDMI connection.
6	WAN Port	Connect to your network router using supplied RJ45 Ethernet cable.
7	Reset Button	Manual reset button for unit.

! NOTE

This guide assumes a minimal standard installation using only the out-of-box cables and mounting aids. You will need to consider your specific installation needs, such as distance between the NVR and cameras or Internet router. You may need additional cables and/or equipment for your specific situation.

How to connect your NVR



Easy 5 Step guide



**IMPORTANT
INFORMATION**

We strongly recommend you connect all cameras and cables and check they are communicating and can be seen on your monitor before permanent installation.

STEP 1: Connect your cameras: Connect power supply **A** either direct to the camera **B** or, if required, use the 13m extension cable **C**.

STEP 2: Connect a display

Connect a monitor or HDTV to **5** using the supplied HDMI cable.

STEP 3: Connect USB mouse:

Connect the supplied USB mouse to any USB port **4**.

STEP 4: Powering up your device

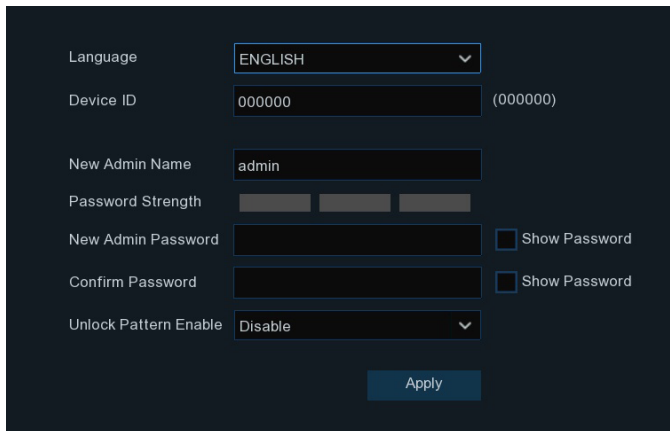
Connect the NVR power supply unit to the power input **1**. Your cameras will automatically connect to the NVR once it is powered up.

Easy 5 Step guide

STEP 5: Create a Password

When you first power up your NVR the password window below will appear. The password needs to be a minimum of five characters and containing a mixture of numbers and letters. Ensure to use a password that you are familiar with but is not easily known to others.

ATTENTION! Be sure to record your login credentials and keep in a secure location. If you forget your password you will need to reset the NVR password using your email. Please ensure to set up your email from the NVR Remote viewing and email manual or download the Full Product Manual on the Concord website concordconnect.com.au.



The screenshot shows a dark-themed configuration window for creating an administrator password. It includes the following fields and options:


- Language:** A dropdown menu currently set to "ENGLISH".
- Device ID:** A text field containing "000000" with "(000000)" displayed to its right.
- New Admin Name:** A text field containing "admin".
- Password Strength:** Three empty progress bars indicating the strength of the password.
- New Admin Password:** A text field with a "Show Password" checkbox to its right.
- Confirm Password:** A text field with a "Show Password" checkbox to its right.
- Unlock Pattern Enable:** A dropdown menu currently set to "Disable".
- Apply:** A blue button at the bottom center of the window.

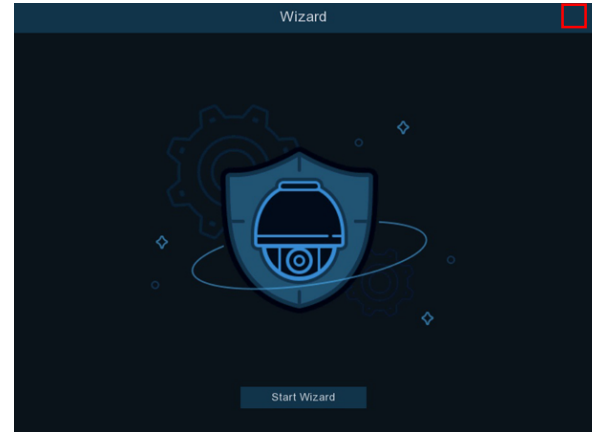
Write your password down here and store it in a safe place.

Setup Wizard

Configuring your device using the Wizard

The Start-up Wizard automatically runs the first time you power up the NVR, however it is not necessary to run the wizard to get started. The wizard will guide you through customising the network, date and time setup, as well as IP camera, storage and screen resolution configuration. You will also find the QR code to setup the mobile app. All these settings can be changed in the Setup menu later.

If you are happy to stick with the default settings you can cancel the Setup Wizard by clicking  at the top right of the pop up.

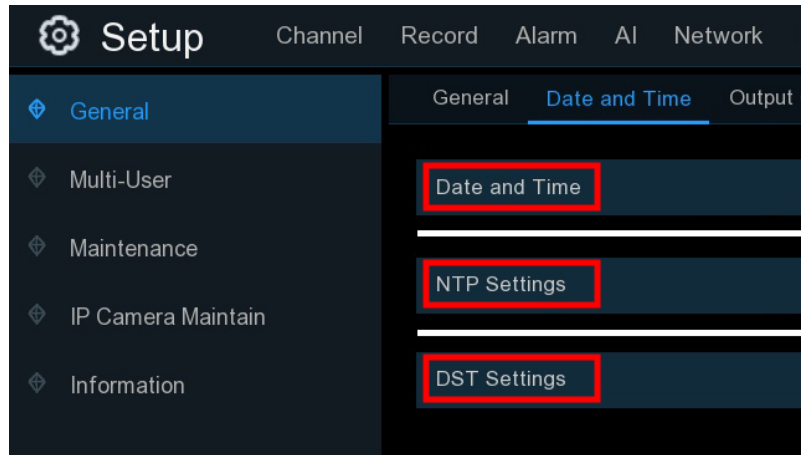


Configuring Date and Time Manually

If you cancel the wizard, you will need to set up the date and time manually by opening the menu (bottom left corner), click Setup → System → General → Date & Time, change to suit your time zone.

In this menu you can setup the date and time manually using settings under **Date and Time** or ticking "Enable NTP" under **NTP Settings** to use the Network Time Protocol which automatically sets the time through your router.

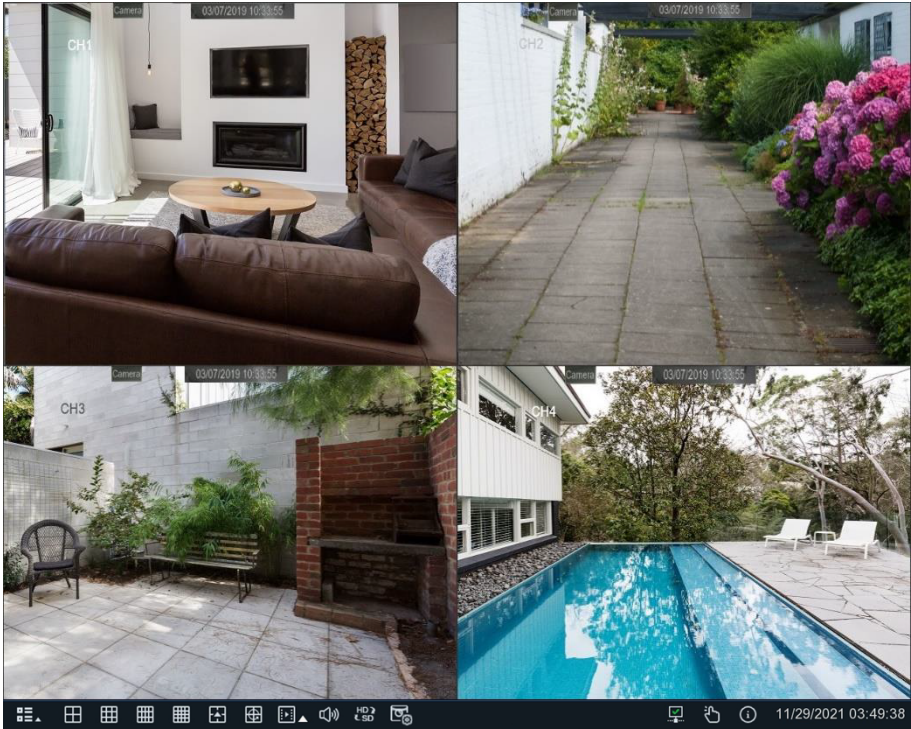
You can also use **DST Settings** to set Daylight Savings Time for your region.



Setup Complete

ALL BASIC CONFIGURATIONS ARE NOW COMPLETE

Your HDTV or monitor should have vision from all connected cameras.



Advanced Setup

Please visit our website www.concord.support and download the full product manual, it can be found on the download tab of the product page for your model.

The manual will show you how to do the following:

- Connect your NVR to the internet
- Camera channel configuration
- Recording configuration
- System configuration
- Access your NVR via the Concord Security App
- And many other features to help you get the most out of your CCTV system

Please refer to the Mobile/APP Quick start guide for setting up email alerts access to your NVR via the CONCORD App.

iOS®:



Android:



Additional cameras, cables and accessories are available from your Concord reseller.

For Concord Surveillance Support and Product Registration visit:

www.concordconnect.com.au/support

www.concordconnect.com.au/register

CONCORD

www.concordconnect.com.au