

RESPONSE

1296p GPS Bike Event Camera



User Manual

QV-3870

Box Contents:



- 1 x 1296p GPS Bike Event Camera
- 1 x GPS Module
- 1 x Camera Mount
- 1 x Handle Bar Mount



1 x Security Cable



1 x USB Cable



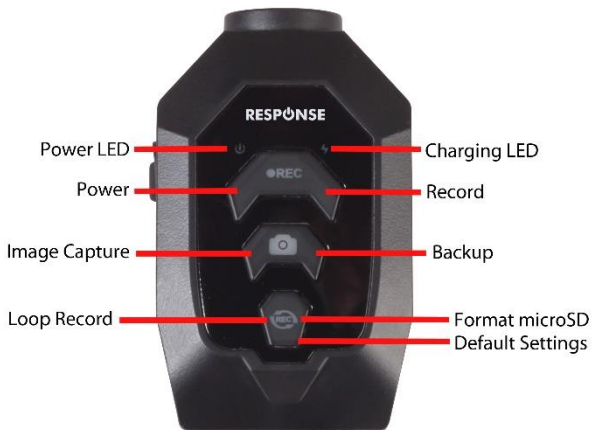
1 x Software CD



1 x Allen Key

Product Diagram:





Power On/Off	Press for 2 seconds to turn on or off
Record	Press to start or stop recording
Image Capture	Press to capture a photo
Backup	Press for 2 seconds to backup previous and current file
Loop Record	Press to start or stop loop recording,

Format microSD	Press and hold for 8 seconds; then press the image capture button to format the microSD card.
Default Settings	Press and hold for 20 seconds; then press the image capture button to restore factory default settings

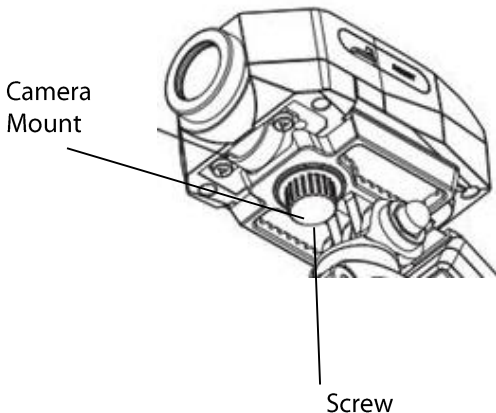
LED Status Indicator:



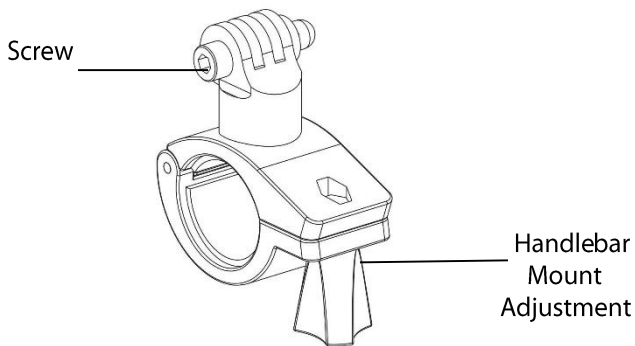
LED Indicator	LED	Description
Power LED	Blue LED On	Power On
	Blue LED Off	Power Off
Charging LED	Red LED On	Low Battery
	Blue LED Flashing	Charging
	Blue LED Off	Full Charged
Record LED	Blue LED On	Recording
	Blue LED Flashing	Loop Recording
	Blue LED Off	Recording Off
Alarm LED	Blue LED On	No microSD Card Inserted

Installation:

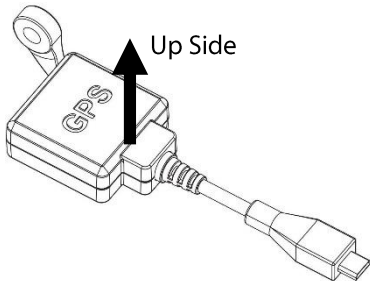
1. Slide the camera mount onto the bottom of the camera until it locks in firmly in place.
2. Insert the camera mount screw into the screw hole located on the camera and tighten firmly in place.



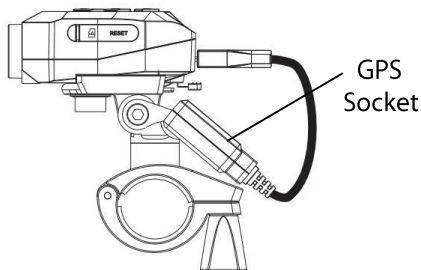
3. Connect the handle bar mount to the camera mount and slide the grooves in place.



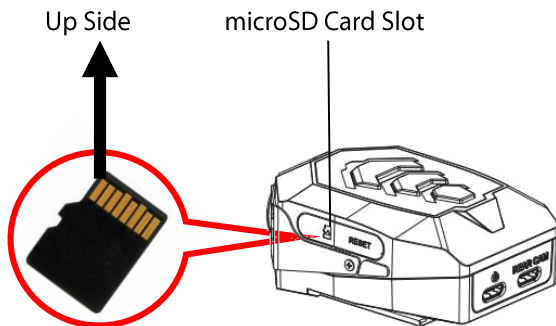
4. Attach the GPS module to the right hand side of the screw hole between the camera and handle bar mount.



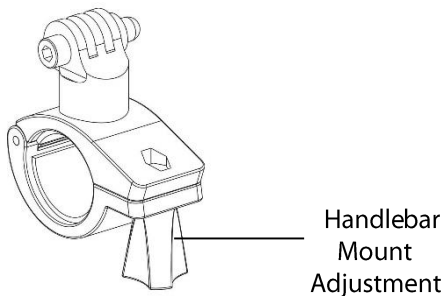
5. Using the Allen key; tighten the screw in-between the camera mount and handle bar mount.
6. Plug in the GPS module plug to the GPS socket located on the rear of the bike camera.



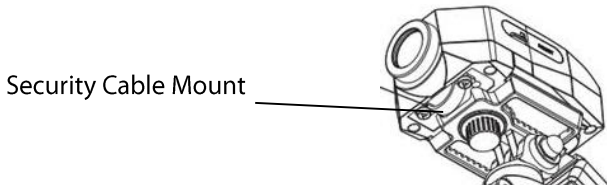
7. Insert a microSD card (not included) into the microSD card located on the left hand side of the bike camera. It is required to use a minimum Class 10 microSD card up to 128GB. It is required for 64 & 128GB to format the microSD card first before use. Press and hold the loop recording button for 8 seconds, then followed by pressing the image capture button to format the microSD card. Once completed restart the unit.



- Loosen the handle bar adjustment until the screw comes out and the handle bar mount is open.
- Attach the mount to the handle bars of your motorcycle, bicycle or scooter and tighten the handle bar adjustment until it is held in place.



- There is an optional security cable included in the contents. Place this through the security cable hole shown in the picture below and loop it around your handle bars. You can attach a small padlock (not included) through the security cable to prevent it from being stolen from your motorbike or bicycle.



Operation:

Power:

On: Press and hold the power button for 2 seconds to turn on the device. Once the unit is turned on, the blue LED power indicator will illuminate.

Off: Press and hold the power button for 2 seconds to turn the unit off.

Please Note: The bike camera will automatically power on and start recording once it is connected to power. This function can be turned off in the settings.

Charging:

Before initial use; the battery needs to be fully charged using the USB cable provided. Connect the USB cable to a charging port in your computer or a USB power supply. The blue LED indicator will illuminate to indicate that the device is charging properly. Once fully charged; the blue LED indicator will turn off.

For faster charging; it is recommended to use a 1A USB power supply. It will take up to 1.5 hours using a 1A USB power supply to fully charge the unit.

Please Note: If you're using this camera on a motorcycle or scooter; you can power the camera permanently using a 5VDC micro B plug to 12VDC converter (not included) or a motorcycle USB handle bar charger (not included) which will connect straight to the battery.

Recording:

Video Recording:

1. Press the power button for 2 seconds to turn the unit on; it will be in standby mode once powered on.
2. Press the record button once and the loop recording will automatically start, the recording LED will be flashing.
3. Press the loop recording button again, then press and hold the normal recording button to start manually recording. The recording LED will be permanently on.
4. Press the recording button again to go back into standby mode, the blue LED indicator will turn off.
5. Once the memory card is full, the alarm LED will flash indicating to delete the memory card footage.

Note: The bike camera by default will automatically start loop recording once the camera is connected to power. This function can be turned off in the settings.

Loop Recording:

1. Once the unit is powered on; the loop recording will automatically start. The blue recording LED will be flashing to indicate loop recording.
2. Press the loop recording button again to proceed with normal recording, the recording LED will be blue permanently.

Note: The recordings will keep overwriting one another when the memory card is full. If you wish to make it stop when the memory card is full then use normal recording mode. It will only save a maximum of 120 mins for loop recording at one time.

Image Recording:

1. Press the image capture button to take an image.
2. The images will be saved on the microSD card at 1080p resolution.

Backup:

1. Press and hold the image capture button for 2 seconds.
2. The unit will back up the previous and current recording files to a separate backup folder located in the microSD card.

Formatting microSD Card:

1. Press and hold the Loop Recording button for 8 seconds.
2. Then press the image capture button straight after you have pressed the loop recording button to confirm formatting.
3. Your microSD card will now be formatted and enter standby mode.
4. Please turn off the unit and turn back on again to restart.

Please Note: Make sure the unit is in standby mode and not recording when formatting the microSD card.

Resetting:

1. Press and hold the loop recording button for 20 seconds.
2. Then press the image capture button straight after you have pressed the loop recording button to confirm resetting.
3. The system will now be reset to factory default settings.

Settings:

The following settings are already preconfigured into the event camera.

Please see below for the setting, description and current default settings.

Setting	Description	Default
UPDATE	Proceed Firmware Update? (Y/N)	N
DATE	Date Format(DD/MM/YY)	01/01/2017
TIME	Time Setup(Sec/Min/Hour)	00:00:00
UTC_TIME	GMT Time Setup	+10

Setting	Description	Default
UPDATE	UPDATE_SETTING=N(Y/N)	
FLIP	Flip Resolution 180° 0: Off / 1: On	0

RESOL	Resolution Setup 0:1296 @ 30fps / 1: 1080 @ 30fps	1
AUDIO	Sound Record 0: Off / 1: On	1
RECTIME	Loop Recording Time 1: 1min / 2 :2mins 3: 3mins / 5: 5mins	5
Auto PWR/REC	Auto Power On Record 0: Off / 1: On	1

If you wish to change any of settings; open the settings text file located on your microSD card. Change the default values to your desired requirements and click save. Please ensure you change both the update time and setting to "Y" so the settings are saved, it will revert back to "N" once the settings have been changed.

The original text file will automatically save onto your microSD card once inserted into your device.

Note: Make sure your device is powered off when changing the settings.

FW Ver :QV-3870_Ver1.19.4(3165)

UPDATE_TIME=N (Y/N)

DATE=01/01/2017(dd/mm/yy)

TIME=00:00:00 (sec/min/hour)

UTC_TIME=+10

(WA=+8/+8.75,NT=+9.5,SA=+9.5/+10.5,QLD=+10,N

SW/TAS/

VIC/ACT=+10/+11,NZ=+12/+13)

UPDATE_SETTING=N(Y/N)

FLIP=0 (0:off/1:on)

RESOL=1 (0:1296p/1:1080p)

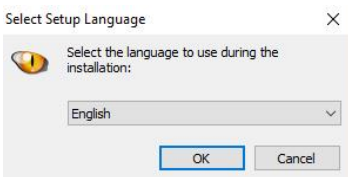
AUDIO=1 (0:off/1:on)

RECTIME=5 (1/2/3/5;min)

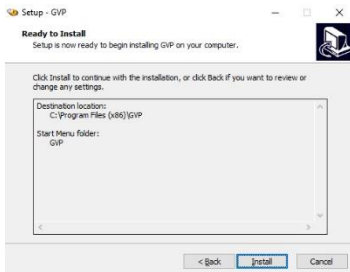
Auto PWR/REC=1 (0:off/1:on)

Software:

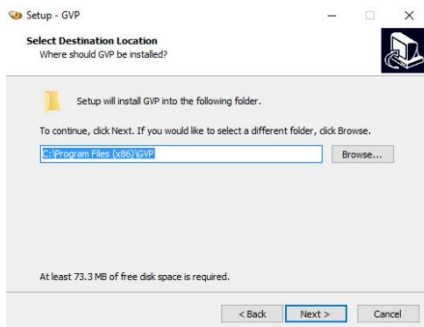
1. Insert the software CD into the disk drive of your computer or laptop.
2. The software disk should automatically open when inserted. If not, then please open 'My Computer' and double click on the disk drive (Default D:).
3. Double click on the GVP player file to run the installation.



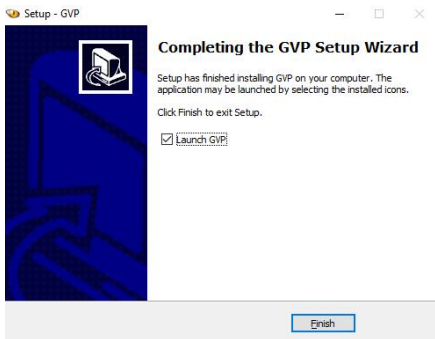
4. Press the button ok to proceed to the next step.
5. Press the install button to continue with the installation.



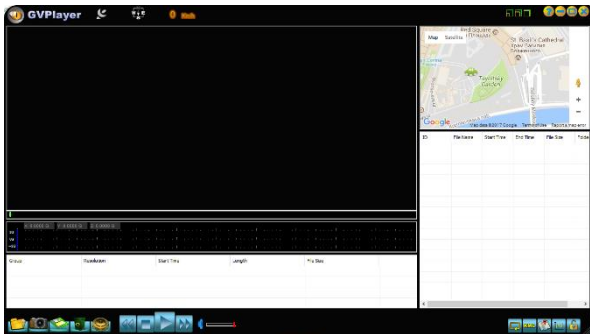
6. Press the next button to install in your program files on your computer, you can change the location by pressing the browse button and selecting a different location.



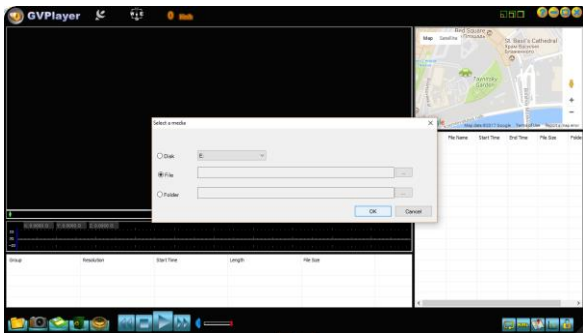
7. The installation now should be finished, press the finish button to launch the GVP player software.

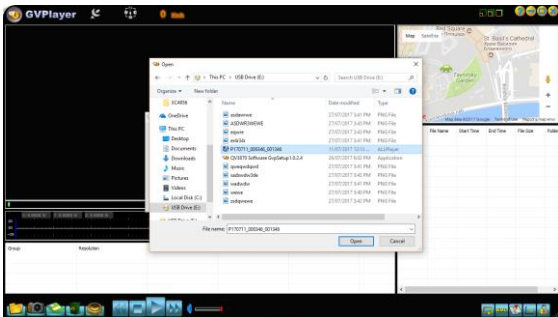


8. The GVP player will now open as shown below:



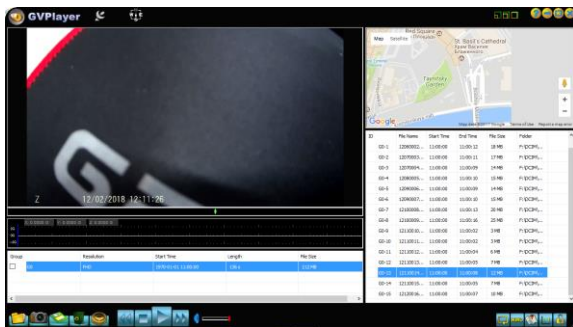
9. Press the open button in the bottom left hand corner to select the file and folder that your videos are in. If you are unsure of which letter drive it is, open my computer and double check the correct drive letter.





10. Once you have selected a file or folder, you will now be able to select the video files in the bottom right hand corner. Double click on the file to start playing.

11. You will now be able to view your video recordings and the location will show in the map at the top right hand corner.



Safety:

- Ensure the unit is not fully submerged in water, the device is only water resistant.
- If the unit is connected directly to a battery, ensure that you're using a converter to 5VDC as the unit won't allow 12VDC input.

Troubleshooting:

Problem	Solution
Camera will not power up	Press the power button for 2 seconds then release
	Connect the unit to power and then press the power button
	Try to use a USB mains power adaptor to charge instead of a USB port from a computer

microSD card will not record	Plug the device into your computer and check to see if it can be read
	Insert the microSD card into a card reader and test on the computer to see if it works
	Reformat the microSD card
	Ensure the microSD card is minimum class 10
The image is not clear	Make sure there is no fingerprints or marks on the lens
The videos lag when playing on a computer	Ensure the microSD card is minimum class 10
	Close all other programs
	Copy the files to your computer directly instead of playing from the device

Requires minimum 2.0GHz
CPU & 1GB Memory

Recording Time:

microSD Card	1296p	1080p
1GB	Up to 8 Mins	Up to 11 Mins
2GB	Up to 16 Mins	Up to 22 Mins
4GB	Up to 32 Mins	Up to 44 Mins
8GB	Up to 64 Mins	Up to 1.4 Hrs
16GB	Up to 2.1 Hrs	Up to 2.8 Hrs
32GB	Up to 4.2 Hrs	Up to 5.6 Hrs
64GB	Up to 8.4 Hrs	Up to 11.2 Hrs
128GB	Up to 16.8 Hrs	Up to 22.4 Hrs

Features:

- Wide Dynamic Range Lens
- Loop & Manual Recording
- Wide 122° Lens
- Auto Power On
- Electronic Image Stabilisation (EIS)
- Google Map Windows GPS Software
- In-Built Microphone
- Date & Time Stamp

Specifications:

Video Resolution: 1296p (2304 x 1296)

1080p (1920 x 1080)

Image Resolution: 3MP

Image Capture Resolution: 1080p (1920 x 1080)

Frame Rate: 30fps

Lens Angle: 122°

Video Compression: H.264

Video File Format: MOV

Photo File Format: JPG

Loop Recording: 1/2/3/5 Minutes

Storage: Up to 128GB microSD (Minimum Class 10)

IP Rating: IPX5

Battery: Li-Po 3.7V, 1100mAh

Battery Time: Up to 2hrs

Charging Time: 1.5-2hrs

Power: 5VDC, 1A

Software Compatibility: Windows 10, 8.1, 8, 7, XP

Dimensions: 70(L) x 50(H) x 47(W)mm

Distributed By:
TechBrands by Electus Distribution Pty. Ltd.
320 Victoria Rd, Rydalmere
NSW 2116 Australia
Ph: 1300 738 555
Int'l: +61 2 8832 3200
Fax: 1300 738 500
www.techbrands.com