

# RESPONSE

## 1080p Wi-Fi Dash Camera



### User Manual QV-3865



GPS



Starlight  
Enhanced  
Night Vision



Parking  
Mode



G-Sensor

## Box Contents:



1 x 1080p Wi-Fi Dash Camera



1 x Windscreen Charging Mount



1 x Car Cigarette Lighter Charger



1 x USB Cable

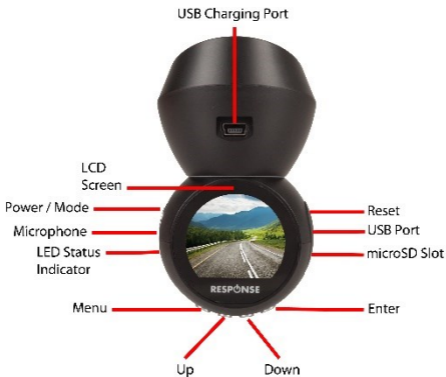


1 x Spare Adhesive Mount



1 x Software CD

## Product Diagram:

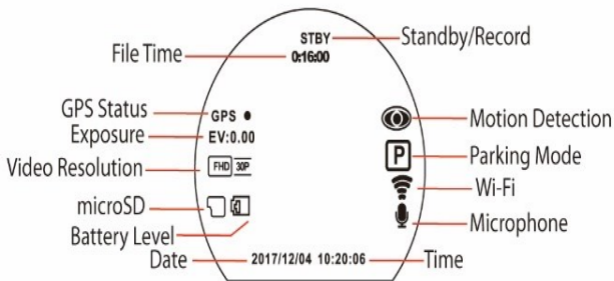


<b>Power / Mode</b>	Press to turn the unit on or off Press while turned on to change between video, image and playback mode Press to exit any selected menu
<b>Menu (M)</b>	Press to enter the menu settings Press again to access the system settings Press and hold to remove the icons from the LCD screen
<b>Up</b>	Up for file and setting selection
<b>Down</b>	Down for file and setting selection Turn the microphone on or off
<b>Ok/Enter</b>	Press to start or stop video recording in video mode Press to take an image in image mode Press to select a file, pause/unpause a file in playback mode Press to confirm an option in the menu settings

## LED Status Indicator:

<b>Blue On</b>	Standby
<b>Blue Flashing</b>	Recording
<b>Red On</b>	Charging

## LCD Diagram:



# Installation:

## Windscreen Charging Mount:

1. Fix the windscreen charging mount to the top of your windscreen, it is suggested towards the middle position of your windscreen.
2. Peel off the adhesive sticker located on the top of the windscreen charging mount once you have the desired location and stick on your windscreen.
3. Attach the dash camera to the windscreen charging mount by the magnet and adjust to the correct position facing forward.

**Note: It is recommended to place the dash camera behind the rear vision mirror to prevent the camera from obstructing your view while driving.**

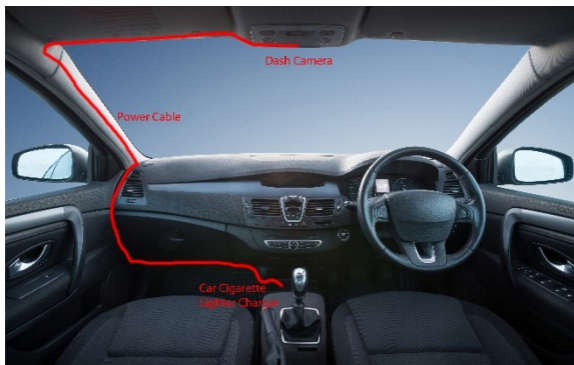
## Power:

1. Insert the car cigarette lighter charger cable into the cigarette socket of your vehicle.
2. Plug the USB end of the car charger into the USB power socket located on the windscreen charging mount.

**Note: The dash camera will automatically turn on and start recording once the car has been started by default.**

Typically, the power cable is connected to your dash camera which will leave the power cable hanging down from your windscreen.

You may also wish to run the power cable along the top of the windscreen so that cable isn't hanging down directly in the middle. Please refer to the photo below, you may need some cable clips (not included) to hold securely in place on the passenger side of the car.



## **microSD:**

1. Before initial use, insert a microSD card into the microSD card slot located on the right hand side of the dash camera.
2. You will hear a clicking sound once the microSD card has been inserted correctly.

**Note: Suggested microSD card is 8-64GB Class 10.**

## **Operation:**

### **Turning On / Off:**

**On:** Press the power button for 1 second to turn on the device. Once the unit is turned on, the blue LED indicator will illuminate and a welcome screen will appear.

**Off:** Press the power button for 1 second to turn the unit off.



## **Charging:**

Before initial use, the battery needs to be full charged via the included car cigarette lighter charger or a USB charging port.

The LED status indicator will be illuminated red while charging; once fully charged it will stop being illuminated.

**Note: It is suggested to keep the dash camera connected to power at all times. The video recording using the battery will be very short due to the small size in battery.**

## **Recording:**

**Video Recording:** Press the Ok/Record button to initialise the recording. The red recording icon should be shown at the top. Press the Ok/Record button to stop the recording.

**Note: The dash camera by default will automatically start recording once the car has been turned on and the car charger is connected.**

**Image Recording:** Press the mode/power button to switch from video to image mode and the icon in the top left hand corner will change. Once in image mode; press the Ok/Record button to take an image.

## **Modes:**

The dash camera has three modes of operation which include Video, Image and playback.

**Video:** This video mode will appear as default when the unit is first turned on. This mode will allow you to record video and access to the video settings.

**Image:** Select this mode by pressing the mode/power button and a photo image will appear in the top left hand corner of the display. In this mode you can take photos and access the image settings.

**Playback:** Select this mode by pressing the mode/power button twice. You can select the file you wish by using the up and down buttons; to play a file press the Ok/Enter button.

**Note:** To delete or protect a video or image file, press the menu (M) button while in playback mode and the settings will appear.

## **USB Connection:**

Connect the USB cable provided to the socket of the dash camera and the opposite end to your computer. Once the device is connected you will notice a message saying mass storage device connected (MSDC). Press the ok/enter button to confirm the selection.

**Note: Once you have selected ok for MSDC mode, an automatic popup should display after 3 seconds on your computer with the video or image folders.**

## **Wi-Fi Connection:**

1. Make sure the dash camera is turned on for Wi-Fi Connection.
2. The Wi-Fi symbol icon should appear white in the bottom right hand corner of the dash camera LCD screen. If the Wi-Fi symbol has a cross in it then you need to enable the Wi-Fi which is located in the system settings.



3. Turn on the Wi-Fi of your smartphone which is located in the settings. The app will enable the Wi-Fi automatically if you haven't turned it on.

4. Download install the following app depending on your smartphone:

## iOS™

**App Name:**  
**Response Dashcam**



**App Name:**  
**CheyunDVR**



## Android

**App Name:**  
**Response Dashcam**



**Alternative**  
**QR Code:**



Link:

[https://www.techbrands.com  
/images/response.apk](https://www.techbrands.com/images/response.apk)

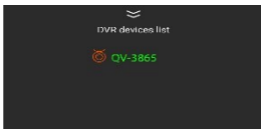
5. Once you have downloaded and installed the app, open it and the following screen should display:



6. Press the "Add New Device" button to start connection with the dash camera.

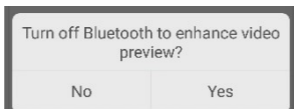
7. You will see a DVR devices list displayed, click on the dash camera labelled as QV-3865.

**Note: If the device is not displaying in this list, ensure the camera & Wi-Fi are both turned on.**



7. The connection process may take around 3-20 seconds depending on if your Wi-Fi connection is enabled or not.

8. An Enhanced video preview message will appear; it is suggested to turn off the Bluetooth from your smartphone to make the video playback more stable.



8. Once the connection is successful, the video will now be streaming. Also you will have such options as to capture video, images or playback existing video.



9. Once you have already added your dash camera to the app; you may gain quick access to the dash camera by pressing the “Get Into My DVR” button located on the main page of the app.

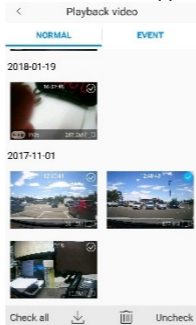
GET INTO MY DVR

## Playback Video:

1. Once the dash camera is connected; press the Playback Video icon.



2. A list of normal and event video files will appear that you have recorded.



3. Click and press play on the current video file that you wish to view.
4. Once you have selected the video file you wish to transfer; you may select one of the following options:



**Check All:** Selects all the video files

**Download Video:** Downloads the current video file selected to your smartphone

**Delete File:** Delete the current video file selected

**Uncheck File Selection:** Unchecks all current video files selected.

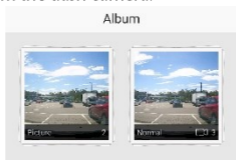
### Album View:

The files can be viewed when the camera is offline by pressing the album icon at the bottom of the main menu.





A list of folders will appear with pictures, normal & events depending on what your device has captured. These files will only appear if you have downloaded them from the dash camera.



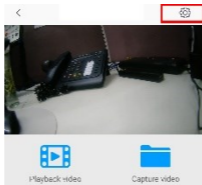
Once a video file has been selected; you can playback or share the video file to your apps such as Facebook, Wechat, Youtube, Skype and email.



Note: Some apps may not transfer the video file correctly.

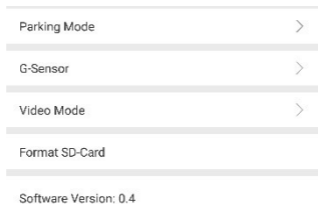
### **App Settings:**

Once you have the device connected; there is a settings icon located in the top right hand corner.



This will display settings such as parking mode, G-Sensor, Video Mode, Format SD card and the Software version.

Once you have the device connected; there is a settings icon located in the top right hand corner. You can change the settings by pressing on the correct button, these settings can also be changed on the device if required.



**Parking Mode:** Off / Low / Medium / High

**G-Sensor:** Off/ Low / Medium / High

**Video Mode:** High / Normal

**Format SD-Card:** Ok / Cancel

**Software Version:** 0.4

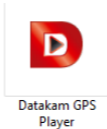
# Software:

## Windows:

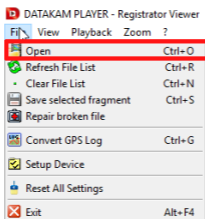
1. Plug the USB cable provided into the USB socket of the dash camera and the opposite end to your computer.
2. One option will appear on the dash camera which shows MSDC (Mass Storage Device Connected). Press the ok/enter button to enter mass storage mode.
3. Insert the software CD provided into the CD disk drive of your computer.
4. Once the software CD has been inserted; it should automatically pop up with the files. If the disk does not automatically load, then please go to my computer and click on the disk drive (D:).
5. Open the folder labelled Datakam Windows GPS Player as shown below.



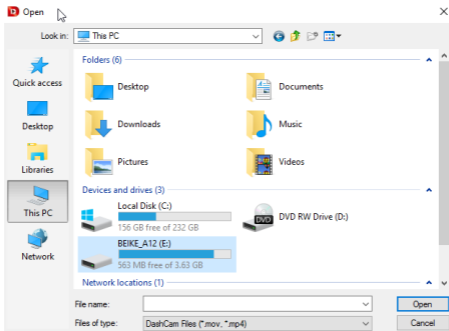
6. Double click on the file labelled Datakam GPS Player as shown below:



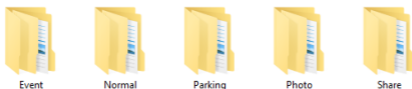
7. Once the software is open, click the file button in the top left hand corner and then click on open as shown below:



8. The following dialog box will open, locate the dash camera in My Computer and double click on it.



9. Within the dash camera you will notice 5 folders labelled as Share, Photo, Event, Normal and Parking.  
Double click on which folder you wish to select and the dash camera recordings will appear.



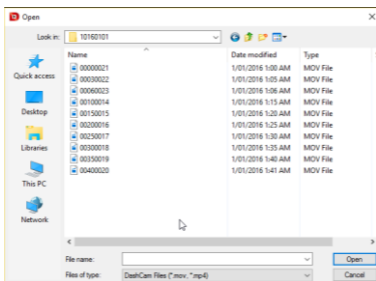
Share: Captured videos & images while connected to Wi-Fi

Photo: Images recorded

Event: Video footage recorded when an accident has occurred

Normal: Video footage recorded while in normal recording

Parking: Videos footage recorded while in parking mode



10. Double click on the specific file that you want to play and it will now appear in the dash camera software.

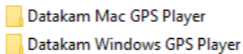
11. The video should now display as shown below, you can add multiple video files and select them in the bottom right hand corner of the software.

12. The GPS location is shown in the top right hand corner and the speed is also shown at the bottom.

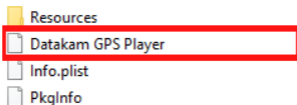


## Mac:

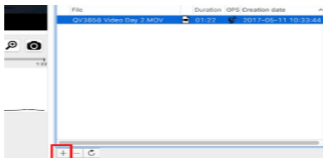
1. Plug the USB cable provided into the USB socket of the dash camera and the opposite end to your computer.
2. One option will appear on the dash camera which shows MSDC (Mass Storage Device Connected). Press the ok/enter button to enter mass storage mode.
3. Insert the software CD provided into the CD disk drive of your computer.
4. Once the software CD has been inserted; it should automatically pop up with the files. If the disk does not automatically load, then please go to Finder and click on the disk drive located under devices.
5. Open the folder labelled Datakam Mac GPS Player as shown below.



6. Click on the file labelled Datakam GPS Player as shown below:

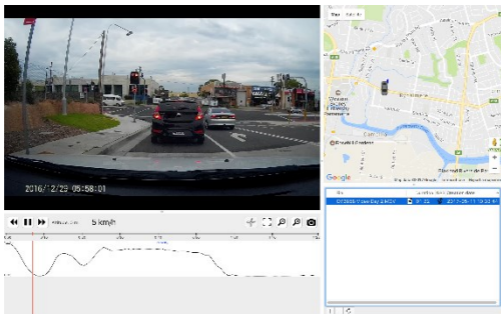


7. Once the software is open, click the add button located in the bottom right hand corner as shown below:



8. A dialog box will open; select the file you wish to choose by going in to the dash camera under devices and double click on it.

9. The video should now display as shown below, you can add multiple video files and select them in the bottom right hand corner of the software. The GPS Location and speed are now shown.





## Settings:

This device has 4 settings which include video, image, playback and system settings.

1. Select the mode by pressing the mode/power button and change it to either video, image or playback mode depending on which settings you wish to change.
2. Press the menu (M) button once you're in either the video, image or playback mode and the settings will display.
3. You can cycle through the settings by using the up and down buttons. To select a setting, use the Ok/enter button to confirm the selection.
4. To access the system settings, press the settings button twice in either video or image mode. You will notice a system settings list will now display instead of the video or image settings.
5. To exit the settings, press the menu (M) button either once or twice depending on if you are in image, video or system settings and it will revert you back to the normal display.

**Video:**

<b>Setting</b>	<b>Option</b>	<b>Description</b>
<b>Resolution</b>	1080p / 720p	Switch between 1080p (1920 x 1080) & 720p (1280 x 720) recording resolutions
<b>Loop Recording</b>	Off / 1 Min / 2 Mins / 3 Mins / 5 Mins / 10 Mins	Overwrites existing files and records in either 1/2/3/5/10 minute blocks
<b>Video Off Time</b>	5 Sec / 30 Sec / 1 Min / 3 Min	This is the time that it takes for the unit to turn off once the power is disconnected
<b>Motion Detection</b>	Off / On	Turn the video on when any motion is detected
<b>Motion Time</b>	5 Sec / 10 Sec / 30 Sec / 1 Min	This will determine how long the video is recording in Motion Detection mode

<b>Setting</b>	<b>Option</b>	<b>Description</b>
<b>Record Audio</b>	On / Off	This will include audio recording on the video file
<b>Exposure</b>	/ -2 / -1 / 0 / +1 / +2 /	Adjust to either lighten or darken the image

### Image:

<b>Setting</b>	<b>Option</b>	<b>Description</b>
<b>Resolution</b>	3M / 1.2M / VGA	Switch between 3M(2048x1536) 1.2M(1280x960), VGA(640x480) image resolutions
<b>Quality</b>	Super Fine / Fine	Make the image quality high or low with this mode
<b>Exposure</b>	/ -2 / -1 / 0 / +1 / +2 /	Adjust to either lighten or darken the image
<b>Contrast</b>	/ -100 / 0 / +100 /	Adjust the colour contrast from light to dark

**System:**

<b>Setting</b>	<b>Option</b>	<b>Description</b>
<b>Wi-Fi</b>	On / Off	Turn the Wi-Fi connection on or off
<b>Wi-Fi Car Cam</b>	N/A	Displays the Wi-Fi SSID username and password of the device
<b>Beep Sound</b>	On / Off	Turn on or off the sound of the buttons when pressed
<b>Power Off</b>	Never / 1 Min / 5 Min	Power off the unit when not in use after a certain time period
<b>Clock Settings</b>	1/01/2018	Displays the date
<b>Date Format</b>	None / YYYYMMDD / MMDDYYYY / DDMMYYYY	Set the date format accordingly

<b>Setting</b>	<b>Option</b>	<b>Description</b>
<b>Stamp Format</b>	Date & Logo / Date / Logo / Off	Displays the date & logo on each video file
<b>GPS Stamp</b>	On / Off	Shows the GPS coordinates on each video file
<b>GPS Status</b>	LAT:XX / LON:XX / USE:XX	Shows the current GPS coordinates
<b>Language</b>	English / Simplified Chinese / Traditional Chinese / Japanese / Russian / Thai	Default language is English
<b>Flicker</b>	50Hz / 60Hz	Change the video frequency
<b>LCD Power Save</b>	Off / 1 Min / 3 Min	Power off the unit's LCD screen after a period of time

<b>Setting</b>	<b>Option</b>	<b>Description</b>
<b>G-Sensor</b>	Off / Low / Medium / High	Choose the sensitivity of the G-Sensor when it starts recording, the files will be protected if your car has crashed.
<b>Parking Mode</b>	Off / High / Medium / Low	This allows the unit to be recorded with vibration if your car is struck while being parked. It will stop 30 seconds after being activated
<b>Time Zone Select</b>	/ +8 / +8.75 / +9 / +9.5 / +10 / +11 / +12 / +13	Select the GMT time zone depending on your location
<b>Reset Setup</b>	Reset Setup / Yes / No	Restore to default factory settings
<b>Format SD Card</b>	Format Card / Yes / No	Reformat the microSD card to factory default
<b>FW Version</b>	Version / Branch	Displays the firmware version

## Troubleshooting:

<b>Problem</b>	<b>Solution</b>
<b>Will Not Record</b>	Make sure the microSD card is inserted properly
	Change to a lower resolution
	Ensure the device is on loop recording otherwise it will stop when the microSD card is full
	Insert a larger capacity microSD Card
	Delete unnecessary files to free space
<b>The Buttons Don't Work</b>	Press the reset button located at the side of the dash camera
<b>Unit Is Getting Warm</b>	Due to its compact size; the unit may get slightly warm. It is suggested to turn off the Wi-Fi when not in use which may reduce the temperature slightly.

<b>Will Not Turn On</b>	Check if the car charger is working correctly otherwise try charging with the USB cable
<b>Wi-Fi Will Not Connect</b>	Ensure the Wi-Fi setting is turned on the dash camera and the Wi-Fi is turned on your smartphone
<b>Image Is Not Clear</b>	Ensure the camera lens is clean

## Recording Time:

<b>microSD Card</b>	<b>1080p</b>	<b>720p</b>
1GB	Up to 4 Mins	Up to 7 Mins
2GB	Up to 9 Mins	Up to 15 Mins
4GB	Up to 19 Mins	Up to 31 Mins
8GB	Up to 38 Mins	Up to 1 Hr



16GB	Up to 1.2 Hrs	Up to 2 Hrs
32GB	Up to 2.8 Hrs	Up to 4.2 Hrs
64GB	Up to 5.6 Hrs	Up to 8.4 Hrs

## Features:

- Wi-Fi Smartphone Playback & Video Sharing
- Free Android & iOS™ Smartphone App
- Starlight Enhanced Night Vision
- Parking Mode
- Loop, Motion & Manual Recording
- Windows & Mac™ Open Street Map Software
- Auto Power On Recording
- 12/24VDC Operation
- In-Built Mic & Speaker

# Specifications:

Display: 1.2" LCD

Video Resolution: 1080p (1920 x 1080)  
720p (1280 x 720)

Image Resolution: 3MP

Frame Rate: 30fps

Lens Angle: 120°

Video Compression: H.264

Video File Format: MP4

Loop Recording: 1/2/3/5/10 Minutes

Storage: Up to 64GB microSD (Class 10)

Battery: Li-Ion 3.7V, 180mAh

Power: 5VDC @ 1.5A

Current Consumption: 700mA

Car Charger Voltage Input: 12-36VDC

Dimensions: 87(H) x 50(W) x 36(D)mm (Including Mount)

Distributed by:  
TechBrands by Electus Distribution Pty. Ltd.  
320 Victoria Rd, Rydalmere  
NSW 2116 Australia  
Ph: 1300 738 555  
Int'l: +61 2 8832 3200  
Fax: 1300 738 500  
[www.techbrands.com](http://www.techbrands.com)