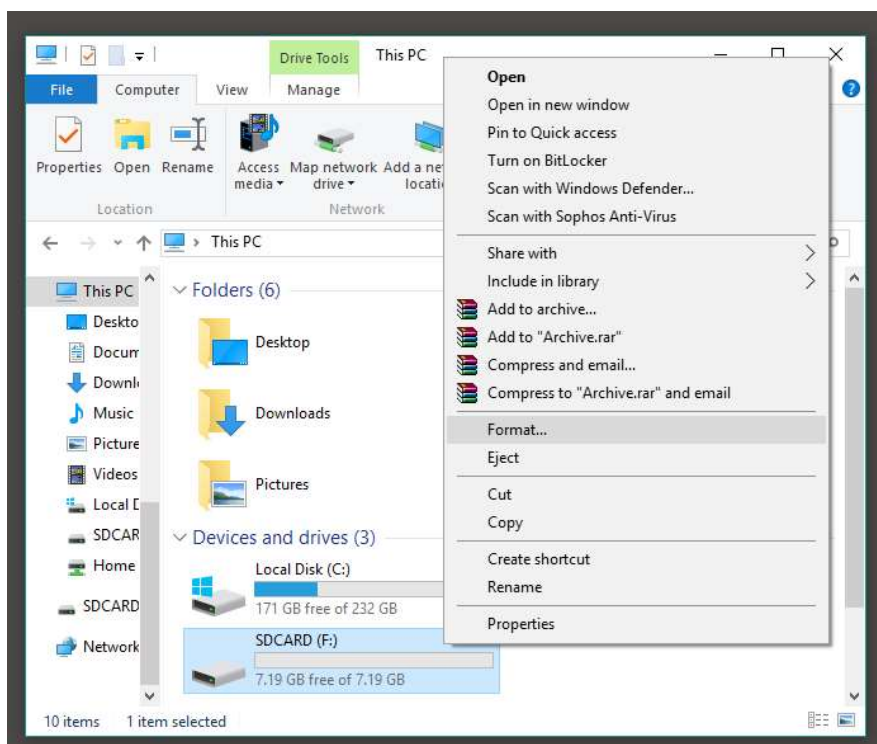


720p Outdoor Camera User Guide

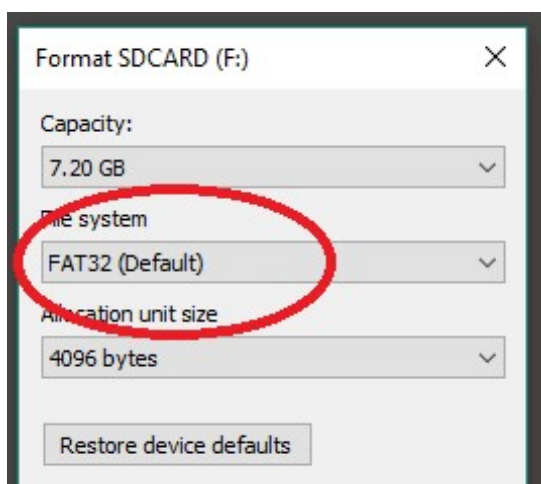
There are two battery components in this unit, 3 C-size batteries for the motion detector, and 4 D-sized batteries for the camera / infra-red (IR) spotlight.

Insert an SD card into the unit, ensuring that it is facing the right way. NEVER force the SD card into the unit.

It is recommended to first insert the SD card into your computer, right clicking the card in the windows “My Computer” page, and selecting “Format” to clear all data from the device and set it up for the camera to use. Format it as FAT32 File system, as shown below. You will only have to do this once.



Once FAT32 is selected, tick the “quick format” and click start. You will only have to do this once.



The control panel for the unit is in two seemingly separate sections that talk to each other. The Camera section is where the SD card fits in and records all the data, the other/bottom section is used for the camera *Control* and motion detection.

1. First, turn the unit on, which is a power switch on the bottom of the camera, once power is given to the main unit, you can turn the camera section on by using the Power switch in the camera section.
2. You will have to set the date and time for the camera, via the camera section, and select either still picture or video mode, to record either a series of pictures (less SD-Card memory used) or to record a video. (More memory card used)
3. You can set other parameters, in these menus, but the default should be fine for most purposes. Exit the menus to save the data.

Next step is to place the unit on a tree or fence, however you want to place it, with the included belt, pointing roughly at where you want to point. You can now adjust the motion detector section on the lower half of the control panel.

Adjusting and Calibrating for a particular application

Once the unit is placed where you want it, you should be able to set the main power switch to TEST and test the motion sensor. After about a minute of turning on the TEST mode, the self-test light should turn off and you can test the motion sensing distance and capability. This mode will not take pictures.

It is easier to adjust by first setting the motion sensitivity (knob on the bottom of the unit control panel) all the way to maximum, then adjusting down until you can no longer detect motion when there is no motion to be detected: explained below:

Suppose you are pointing this camera outside in amongst trees. On maximum setting, every bit of wind and branch rustling will cause the camera motion sensor to detect motion and record a video (or take pictures) of empty wind. This will chew up SD card memory and battery life.

Instead, set the unit to maximum and point it in the direction of where you want to monitor, then set to TEST mode. Wait 1-2 minutes for the test light to turn off, then wait for the wind or branches to move to see if it falsely sets off the camera. Adjust if needed.

You are aiming for a sweet-spot of motion sensor sensitivity, where the camera detects people and animals, but not trees and branches; this sensitivity level changes for every new location and scene.

Once the motion sensor is set as you want, switch the camera to the ON position and test a few proper shots with the photos and videos, adjusting the settings if needed. It is best to test a particular camera point, before relying on camera usage for mission critical applications.

Final Notes

Final point of note is that sunlight naturally has infra-red light in the sun-rays, so sun-rises and sun-sets can set off the motion sensor prematurely. Try to point the camera away from such events.

This is now the base quick-start guide for the QC8048 Camera.