

**CONCORD**  
CONNECTING TOGETHER



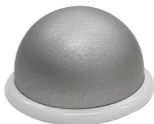
QC3914

# Wi-Fi Battery Powered Camera & Solar Panel Quick Start Guide

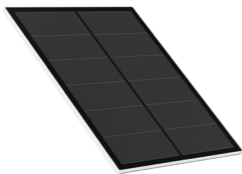
# What's in the box?



Wi-Fi Battery  
Powered Camera



Magnetic Mount



Solar Panel



Solar Panel Mounting Base

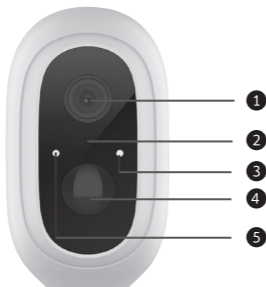


USB Charging  
Cable



2x Wall Mounting  
Hardware

# Getting to know your Camera

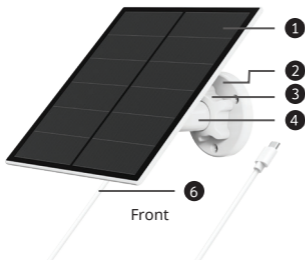


1	Lens
2	Microphone
3	Infrared LED
4	PIR
5	Light Sensor

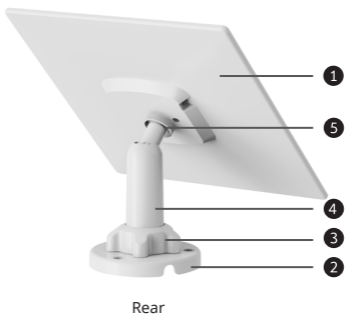


6	Micro SD Card Slot (Up to 128GB)
7	Reset Button
8	On/Off Button
9	Power Input

# Getting to know your Solar Panel



1	Solar Panel
2	Base
3	Locking Screw Cap
4	Universal Joint
5	Socket Nut
6	USB Charging Output



# Connecting To Wi-Fi

Place your smart phone and camera right next to your wireless modem/router for connection.



Camera



30cm-100cm



Smartphone

Note: Make sure your smart phone is connected to the same network as your wireless modem/router. Please note the camera only works on 2.4G Wi-Fi as 5G Wi-Fi is not supported.

## Download the App & Account Setup

Download the "Tuya Smart" app on your smartphone from the App store or the Google Play store. Alternatively you can scan the QR code below and the app icon will be displayed after it has installed correctly.



Tuya Smart



Tuya Smart



# Setting Up Your Camera

**Step 1:** Insert a microSD card (Not Included) in to the rear side of the camera.

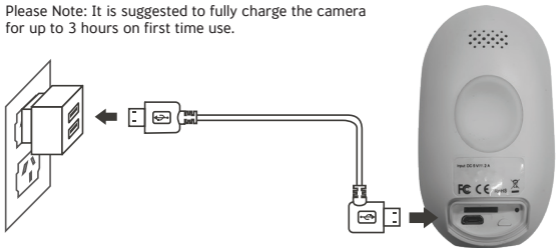
Please note: Class 10 Micro SD cards are recommended. Maximum capacity supported is 128GB.



**Step 2:** Connect the USB Charging cable to the camera's power input socket.

**Step 3:** Connect the opposite end of the USB charging cable to a USB mains power adaptor or computer with at least 2 amps of charging.

Please Note: It is suggested to fully charge the camera for up to 3 hours on first time use.



# Setting Up Your Camera



**Step 4:** Press and hold the reset button for up to 5 seconds, then release the button to reset the camera. The LED light will blink quickly.



**Step 5:** Launch the "Tuya Smart" app from your smart phone and click the "Sign Up" button to begin registering an account or the login button.

**Step 6:** Once logged in to your account, press the "+" button in the top right corner. Press the "Add Device" button and follow the on screen prompts to add your device automatically. To manually add your device, select "Security & Video Surveillance" and then "Smart Camera (Wi-Fi)".



**Step 7:** Continue to follow the app's prompts and input your Wi-Fi password. Scan the QR code on the camera (point the camera towards the QR code on your smartphone at a distance of 15-20cm). A beeping sound will sound from the camera once it has been successfully paired.



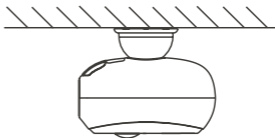
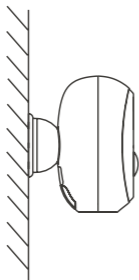
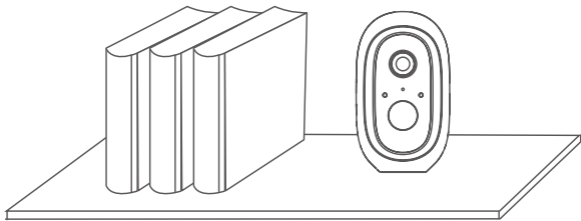
**Step 8:** Once the blue LED stays on, the camera is ready to use.

# Installing Your Camera

You can place your camera on a shelf or other flat surface, or you can mount it to a wall.

## To mount your camera to the wall:

- Fasten the mounting screws into the wall, and then attach the magnetic mount to the screws.
- If you're mounting the camera to drywall, be sure to install the plastic drywall anchors that are provided.



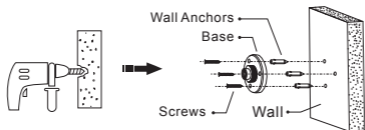


# Installing Your Solar Panel

Place the solar panel in an area with consistent sunlight throughout the year. It only needs a few hours of direct sunlight each day to keep your camera powered.

The amount of power that the solar panel produces is affected by weather conditions, seasonal changes, geographic location, etc.

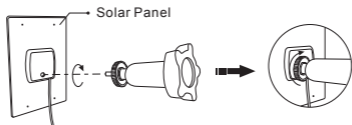
**Step 1:** Fix the mounting base of the solar panel to the wall using the included screws. You may need to use the wall anchors depending on the wall type.



**Step 2:** First, install the locking screw cap into the universal joint, and then screw the circular socket nut into the universal joint.

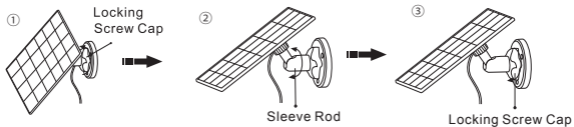
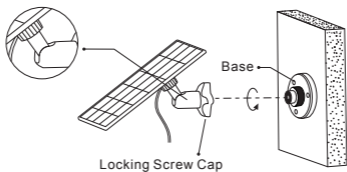


**Step 3:** Screw the universal joint into the back of the solar panel. Tighten it firmly with the attached nut.

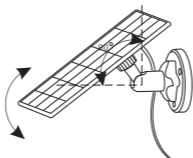


# Installing Your Solar Panel

**Step 4:** Screw the locking screw cap into the base. Make sure that the universal joint is angled upwards.



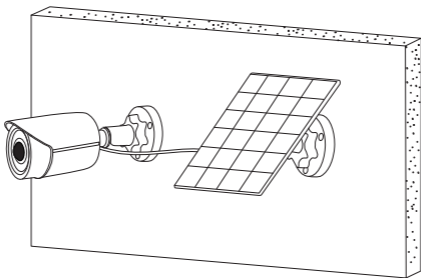
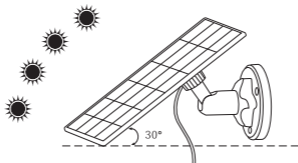
**Step 5:** The solar panel's angle can be adjusted up and down up to 90°.



# Positioning Your Solar Panel

**Step 1:** Find an area that gets the most direct sunlight throughout the day.

**Step 2:** Angle the solar panel 30° upwards as shown below.



**Completed Installation**

# Camera LED Status

LED Status	Camera Status
Red LED On	System starting up
Red LED Flashes Quickly	Standby for configuration
Blue LED Flashes Quickly	Network pairing
Blue LED On	Camera Online
Purple LED Flashes Quickly	OTA Upgrade

# CONCORD

[www.concordconnect.com.au](http://www.concordconnect.com.au)

Distributed by:  
Electus Distribution Pty. Ltd.  
320 Victoria Rd, Rydalmere NSW 2116 Australia  
Ph: 1300 762 627 Fax: 1300 738 500

Made in China