



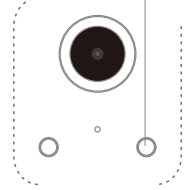
1080p Wi-Fi Battery Twin Pack Cameras

Instruction Manual

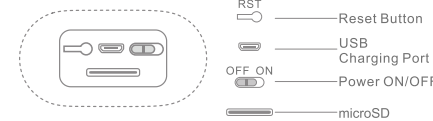
Box Contents

- 2 x Wi-Fi Battery Powered Cameras
- 2 x Wall Mount Brackets
- 2 x USB Charging Cables
- 2 x Wall Mounting Hardware

LED Status Indicator



Solid red light	Setup Failure
Red light blinking quickly	Pairing Mode
Green light blinking quickly	Wi-Fi is connecting
Solid green light	Working normally
Yellow light blinking quickly (Red and green light)	Device upgrade
Solid white light	Charging
White light blinking	Charging incorrectly



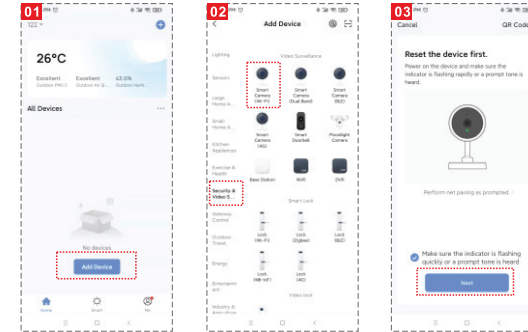
Install APP

Download APP: scan the QR code below to download and install.
Register and login: open the " Smart Life" APP to register and login according to the guide in the APP.



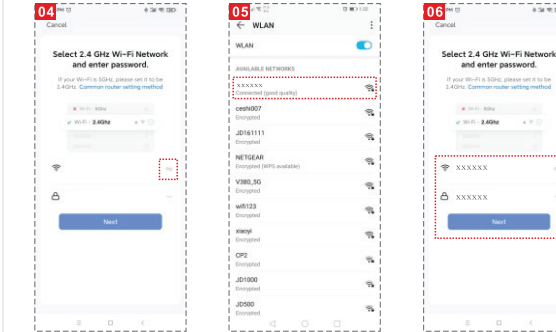
Add The Device-Scan QR code mode

- Make sure Wi-Fi is available and connected to the Internet.
- Connect the camera to the power, then system startup completed.
- Open "Smart Life" APP, press the "+" in the upper right corner of the main screen (Figure 01); choose "Security & Video Surveillance", click "Smart Camera" (Figure 02) to add camera; and then click "Next step" (Figure 03);

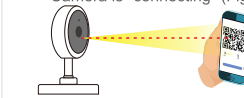


- If the mobile phone is not connected to Wi-Fi, please click "Connect to Wi-Fi" (Figure 04);
- It will jump to the WLAN interface and connects Wi-Fi (Figure 05).
- If the phone is connected to Wi-Fi (Figure 06), Tap "next" ;

Note: Only 2.4GHZ Wi-Fi is supported.



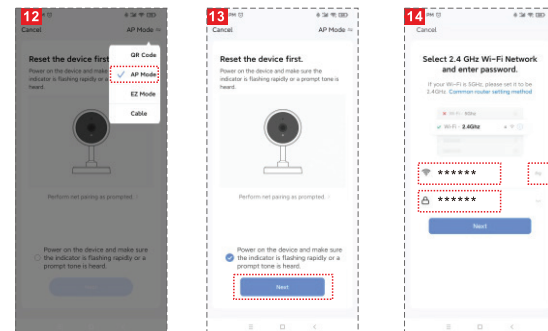
- A QR code will prompt on phone screen and you need to scan it with the Smart Camera. (the camera is about 20-30 cm away from the mobile phone screen). Then tap "I heard a prompt" (Figure. 07).
- Camera is "connecting" (Figure. 08);



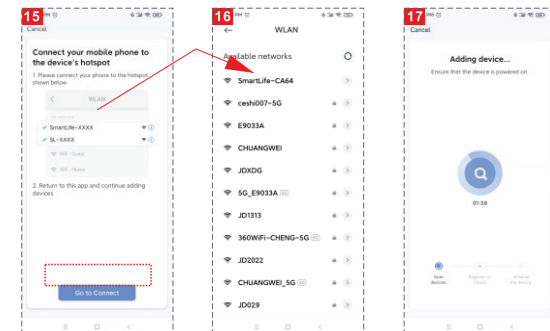
- Connection completed(Figure 09), tap "Done"
- It jumps to preview page (Figure 10)
- After closing the device preview page, it returns to the APP home page.
- At this time, the connected device will appear on the APP home page (Figure 11).
- Then you can tap directly to the device page to monitor.

Add The Device- AP Mode

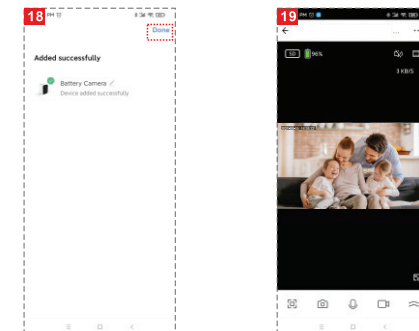
- Select "AP Mode" (Figure 12)
- Click Next (Figure 13)
- Enter the account and password that can connect to WIFI (Figure 14)



- Click "Go Connect" (Figure 15)
- Go to "Smart Life-XXXX" and click Connect (Figure 16)
- Connecting (Figure 17)



- Click to complete the connection (Figure 18)
- Video screen (Picture 19)



Reset

Press and hold the reset button for up to 10 seconds to reset the camera back to default settings.

Safety

- Do not open the case of this product to prevent the unit from damage.
- Keep the camera away from high temperatures as it may damage the device.

Specifications

Image Sensor: 1/2.0" CMOS
Resolution: 1080p (1920 x 1080)
VGA (640 x 480)
Frame Rate: 15fps
Lens: 4mm
Lens Angle: 105°
Night Vision: 6 x IR LEDs
Night Vision Range: Up to 10m
Wi-Fi Frequency: 2.4GHz
microSD Card: Up to 128GB
IP Rating: IP65
Battery: 3.7V Li-ion, 5200mAh
Battery Life: Up to 3 Months
Power: 5VDC, 2A
Dimensions: 130(L) x 78(H) x 70(W)mm

Distributed by:
Electus Distribution Pty Ltd
46 Eastern Creek Dr,
Eastern Creek NSW 2766 Australia
Ph 1300 738 555
Int'l +61 2 8832 3200
Fax 1300 738 500

www.electusdistribution.com.au