

NEXTECH



Mini Wi-Fi IP Camera QC3863 Quick Manual

1. Download APP and install

A. Make sure your mobile device can connect to network

B. Tuya smart ip camera support "Tuya smart "and "Smart life "APP, you can find in APP store or scan QR code to download; for first time to use, please register, otherwise login if you already have account

C. Please note : "Tuya smart" and "Smart life" can not connect same device at the same time.



Android Or IOS

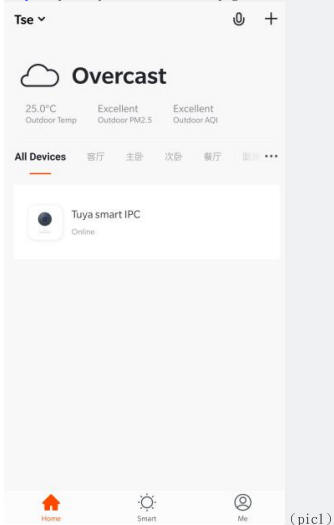
2. Check wireless network

Check DHCP function of router are ok and under 2.4 GHz (5GHz is not supported)

Make sure your smartphone is connected to network

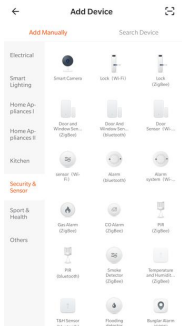
3. Connection setting

Step1: open Tuya smart APP home page ,click "+" on upper right corner (pic1)



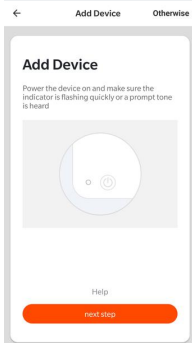
(pic1)

Step 2: on "security&sensor" page choose "smart camera" (pic2)



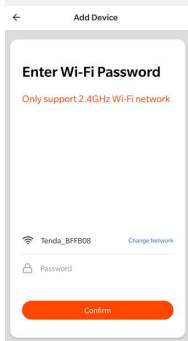
(pic2)

Step 3: on add device page, make sure the camera is powered on and have prompt tone “Ding ding ding” is heard (pic3) , if not heard, please hold “Reset” for 8s to reboot device, then start again

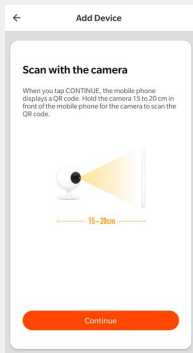


(pic3)

Step 4: Input password of your WIFI , click “confirm” (pic4) , show scan with the camera , click “continue” (pic5)



(pic4)

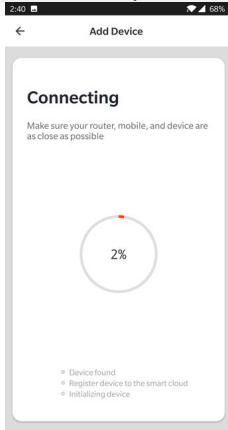


(pic5)

Step 5, Hold QR code target in front of camera about 20-30cm, after hearing the beep sound ,click “heard the beep” ; (pic6) showing connecting, connection success when process to 100% (pic7)

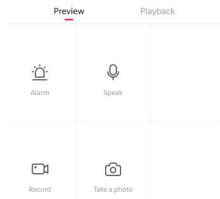
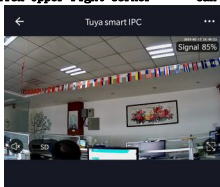


(pic6)

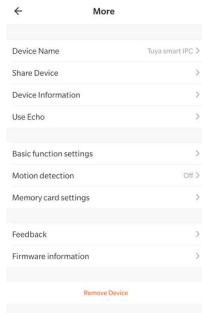


(pic7)

Step 6 you can remote view and set alarm, 2 way speak or playback (pic8) ;
Click Upper right corner "... "can check device info and basic setting (pic9)



(pic8)



(pic9)

Distributed by:
Electus Distribution Pty. Ltd.
320 Victoria Rd, Rydalmere
NSW 2116 Australia

www.electusdistribution.com.au

Made in China