



**Spare 2.4GHz 720p  
Digital Wireless Camera  
to suit QC-3764 7" LCD Surveillance Kit**



**User Manual  
QC-3765**



## Box Contents:



1 x Wireless Camera



1 x Mains Power Adaptor



1 x Camera Antenna



1 x Mounting Hardware

## Product Diagram:



No.	Description
1	Weather Shield
2	Camera Lens
3	Wireless Antenna
4	IR LEDs
5	Microphone
6	Motion Detector (PIR)
7	Speaker

## Installation & Setup:

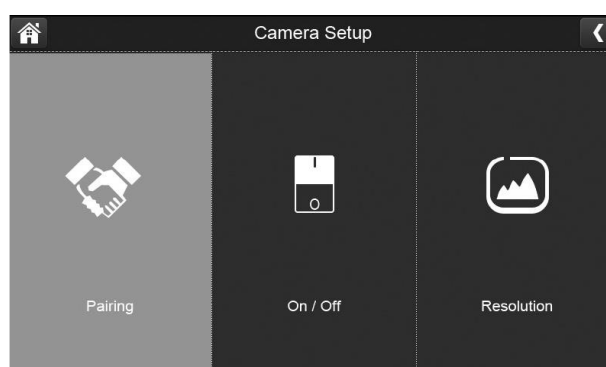
1. Position the camera securely in place, it is best to have the monitor located near the camera temporarily so you can see the exact position of the camera.
2. Once you have camera in the correct position, mark the location of the screw holes.
3. An extra hole may need to be placed for the power cable to run depending on your installation.
4. Fix the included screws and anchors to attach the camera to the wall or ceiling.
5. Attach the wireless antenna to the rear antenna socket and screw in tightly.
6. Connect the 9VDC, 600mA mains power adaptor to a 240VAC standard power outlet, and the DC plug in to the power socket of the camera.
7. Once the camera and monitor are powered on, the unit now should be displaying the camera footage.

Please Note: Please install the camera in an undercover area if place outside as the unit is weatherproof only.

## Operation:

### Camera Setup:

This allows you to pair existing or additional cameras, turn the cameras on or off and adjust the resolution as shown below:



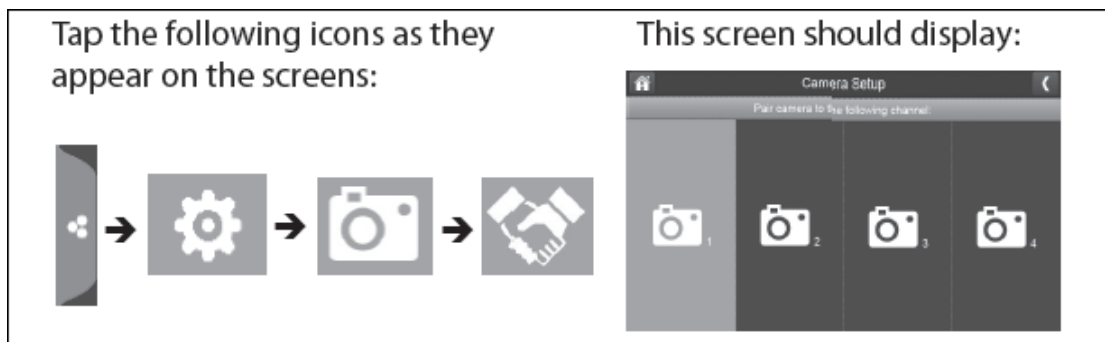
### Pairing:

Your camera is already pre-paired to the monitor on channel 1. When you add a new camera to your system, you have to "pair" the camera and monitor to each other so they can communicate. You can also use pairing to change one camera to a different channel if required.

Please Note: If the camera is already assigned to the selected channel, pairing on the same

channel will overwrite the current camera with the new one.

Please only pair one camera at a time otherwise the cameras may interfere if multiple is pairing at once.



1. Press the pairing button on the camera setup screen.
2. Select the channel number you want to pair the camera to.
3. A message will be displayed with instructions to press the pair button on the camera. Press and release the pair button located at the rear of the camera. A 30-second countdown will begin.  
Please Note: You must press the pair button on the camera during the 30-second countdown otherwise the camera will not pair with the monitor
4. The system will display live video 3 seconds after the camera has successfully paired.

### Troubleshooting:

If...	Try...
The camera's signal status icon shows no bars	<ul style="list-style-type: none"> <li>·Make sure the camera is connected to power.</li> <li>·Make sure that the camera's antenna is attached and the monitor's antenna is extended.</li> <li>·Make sure the camera is paired to the correct channel.</li> <li>·Re-pair the camera and monitor.</li> </ul>
The camera won't pair with the monitor	<ul style="list-style-type: none"> <li>·Make sure the camera is connected to power.</li> <li>·Press and release the pairing button quickly. Do not press and hold the pairing button.</li> </ul>

## **Safety Instructions:**

- Do not open the camera for any reason.
- Do not expose the camera outdoors, it is a weatherproof camera however it is recommended to be placed undercover otherwise it may damage the camera.
- Avoid pointing the camera in direct sunlight.

## **Specifications:**

Image Sensor: 1/4" Colour CMOS

Resolution: 1280 x 720 (720p)

640 x 480 (VGA)

Frame Rate: 15fps @ 720p (Up to 2 x Cameras)

7fps @ 720p (Up to 4 x Cameras)

30fps @ VGA (Up to 2 x Cameras)

15fps @ VGA (Up to 4 x Cameras)

Lens: 3.6mm

Viewing Angle: 64°

Night Vision: 12 x IR LEDs

IP Rating: IP54

Power: 9VDC, 600mA

Dimensions: 180(L) x 68(W) x 40(H)mm

Distributed by:

TechBrands by Electus Distribution Pty. Ltd.

320 Victoria Rd, Rydalmere

NSW 2116 Australia

Ph: 1300 738 555

Int'l: +61 2 8832 3200

Fax: 1300 738 500

[www.techbrands.com](http://www.techbrands.com)