

# Luggage Padlock with Fingerprint Scanner User Manual LA5129

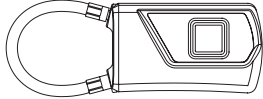
Distributed by:  
TechBrands by Electus Distribution Pty. Ltd.  
320 Victoria Rd, Rydalmere  
NSW 2116 Australia

Ph: 1300 738 555  
Int'l: +61 2 8832 3200  
Fax: 1300 738 500

www.techbrands.com

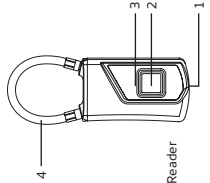
Made in China

# NEXTECH



## 1. USB Interface

The product is charged by USB. Please fully charge the product for the first time.



## Components:

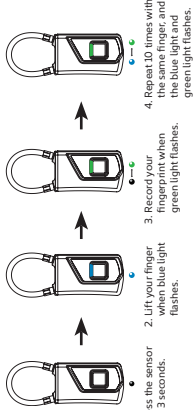
1. USB Port
2. Fingerprint Reader
3. LED Light
4. Wire Rope

## 2. Indicator

Use the table below to determine the Padlock's status based on the colour and state of the LED.

Indicator Status	Function
Low Power	Red Light Flash
Charging	Red Light Always On
Full Charge	Lights Off
Green Light Flash	Fingerprint Collection Mode
Green Light Always On	Successful to Collect Fingerprint
Blue Light Always On	Administrator Fingerprint Authorisation
Green Light Flashes Fast	Unlocked Successfully
Red Light Always On	Delete Fingerprint Mode
Red Light Flash	Failed to collect Fingerprint

## 3. Setting the Administrator's Fingerprint

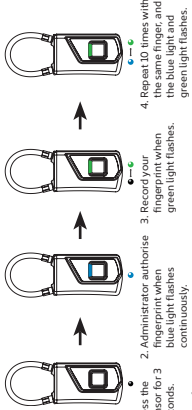


1. Press the sensor for 3 seconds.
2. Lift your finger when blue light flashes.
3. Record your fingerprint when green light flashes.
4. Repeat 10 times with the same finger, and the blue light and green light flashes.

## Remarks:

1. Please confirm that the fingerprint lock is locked before recording the fingerprint.
2. Please pull out the lock rope manually after the fingerprint is unlocked successfully.
3. Please insert and press the lock rope when intend to lock.

## 4. Number 2 to 10 Fingerprint Recording Instructions

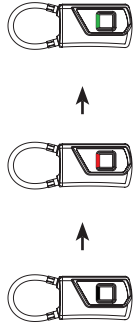


1. Press the sensor for 3 seconds.
2. Administrator authorise fingerprint when blue light flashes continuously.
3. Record your fingerprint when green light flashes.
4. Repeat 10 times with the same finger, and the blue light and green light flashes.

## Remarks:

1. Please confirm that the fingerprint lock is locked before recording the fingerprint.
2. The first and second fingerprints are the administrator fingerprint by default.
3. Collecting the second to tenth fingerprints requires administrator fingerprint authorisation.

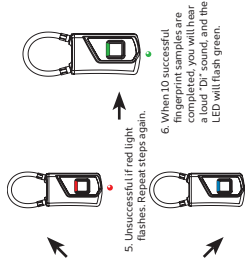
## 5. How to delete a fingerprint



1. Press the sensor for 10 seconds.
2. Administrator authorise fingerprint when red light flashes continuously.
3. The fingerprint was deleted successfully when the green light flashes continuously and continuous sound is made.

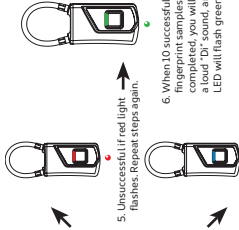
## Remarks:

1. Please confirm that the Luggage Padlock is locked before deleting the fingerprint.
2. Only the administrator can delete the fingerprint, and delete all fingerprints at once.



5. Unsuccessful if red light flashes. Repeat steps again.
6. When 10 successful fingerprint samples are completed, you will hear a loud "Di" sound, and the LED will flash green.

5. Successful if blue light flashes.



5. Unsuccessful if red light flashes. Repeat steps again.
6. When 10 successful fingerprint samples are completed, you will hear a loud "Di" sound, and the LED will flash green.

5. Successful if blue light flashes.

## 6. Specifications

Support 360° angle fingerprint recognition
Resolution: 508dpi
ESD: +/-12KV air, +/-8KV contact
FRR: <1%
FAR: <0.002%
Recognise Time: <300ms
Battery: 3.7V 240mAh (Unlock: 1000 times)
Standby time: 1 Year
Charger: 5V 1A

## 7. Low Voltage

When the battery voltage is under 3.5V, the red LED will flash fast for 15s. An alarm will sound every minute when battery status is low.