

**NEXTECH**

**LA5069**



# Smart WiFi Door/Window Sensor

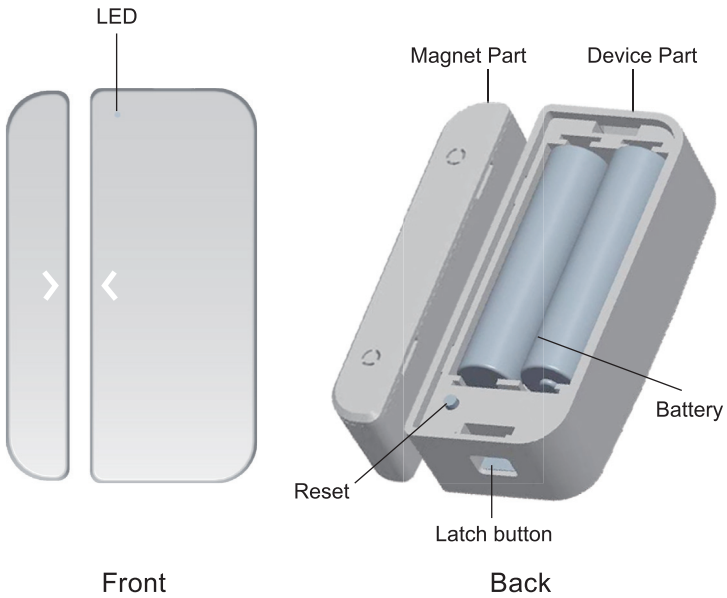
## Instruction Manual

# CONTENTS

Product Configuration	2
LED Indicator	2
Specifications	3
App Download	4
Registration	5
Add Devices	6
Network Configuration	7
Remove Devices	9
Customise Scenes	10
Share & Push Notifications	11
Compatible with Amazon Alexa & Google Home	12
Tips	13

## PRODUCT CONFIGURATION:

Detects open/close status of the door/window.



## LED INDICATOR:

**LED indicator: indicates the device's working state:**

- Fast blinking in blue: EZ Mode (Smart Configure) for Wi-Fi configuration
- Slow blinking in blue: AP mode for Wi-Fi configuration

## SPECIFICATIONS:

Battery:	AAA 1.5V ×2
Standby Current:	≤5uA
Protocol:	IEEE802.11b/g/n
Wireless Range:	50m
Operating Temperature:	-10°C ~ 40°C (14°F ~ 104°F)
Operating Humidity:	20% ~ 85%
Storage Temperature:	-10°C ~ 60°C (14°F ~140°F)
Storage Humidity:	0% ~ 90%
Wireless Type:	2.4GHz Standby
Time:	4 ~ 6 months
Size:	Magnet Part: 64×10.5×19.5mm Device Part: 65×27.5×19.5mm

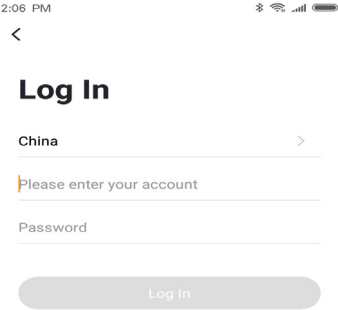
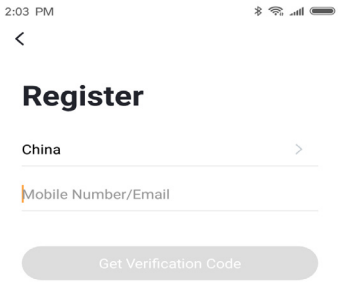
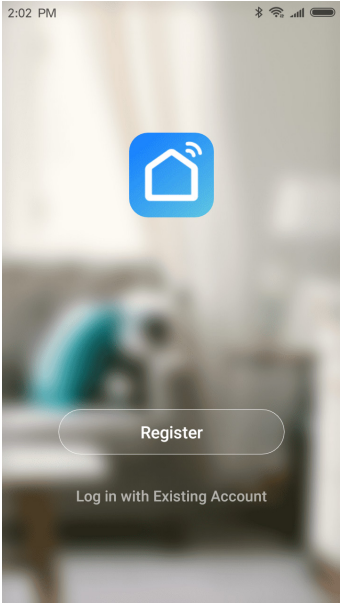
## APP DOWNLOAD:

Scan the following QR code to download APP for Android and iOS system. Alternatively, you can download the APP named as "Smart Life" from Apple Store & Google Play.



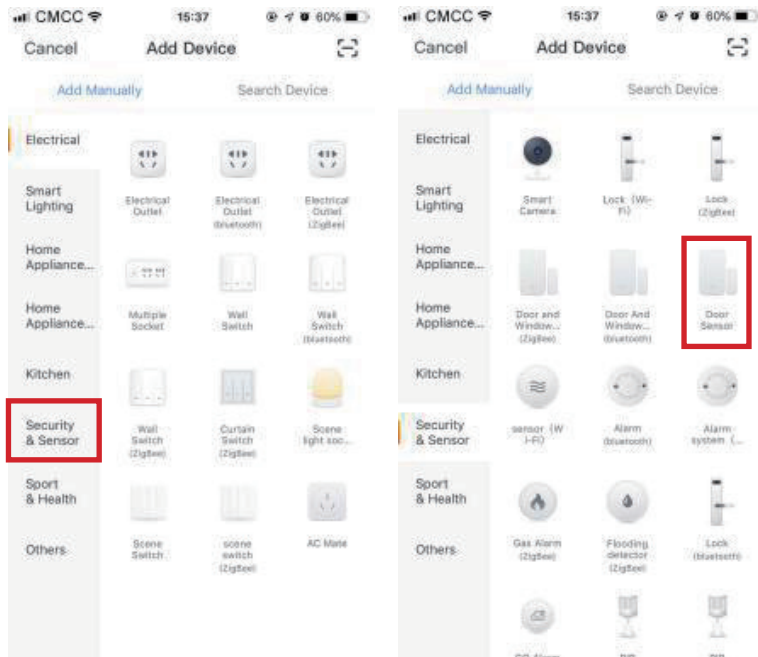
# REGISTRATION:

Open the APP and type your mobile number or email address, and then confirm password to complete the registration.



## ADD DEVICES:

Click "Add Device"; Select the Device Type "Security & Sensor" in the list to add the "Door Sensor" device.

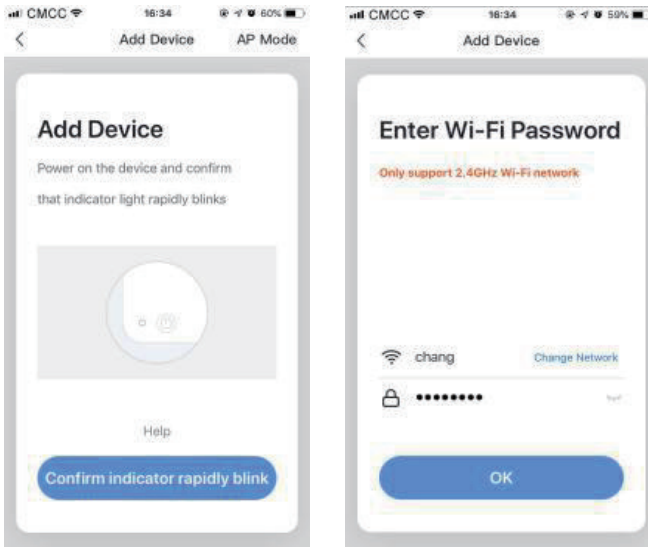


## NETWORK CONFIGURATION:

There are two methods to bind door sensor to App. One is EZ Mode and the other is AP Mode.

### EZ Mode

1. Press the device button for 6 seconds to enter the Wi-Fi configuration state ("fast blinking in EZ Mode or slow blinking in AP Mode.)
2. Input the Wi-Fi SSID and password of the Wi-Fi network that the device is going to work with, then waiting around 30 seconds for the Wi-Fi Configuration to be finished (until the device is successfully added).
3. Changes the device name and share it within the APP account as you want
4. Click the device just added to launch the device stage UI check the state, battery level, record history and the APP notification setting.

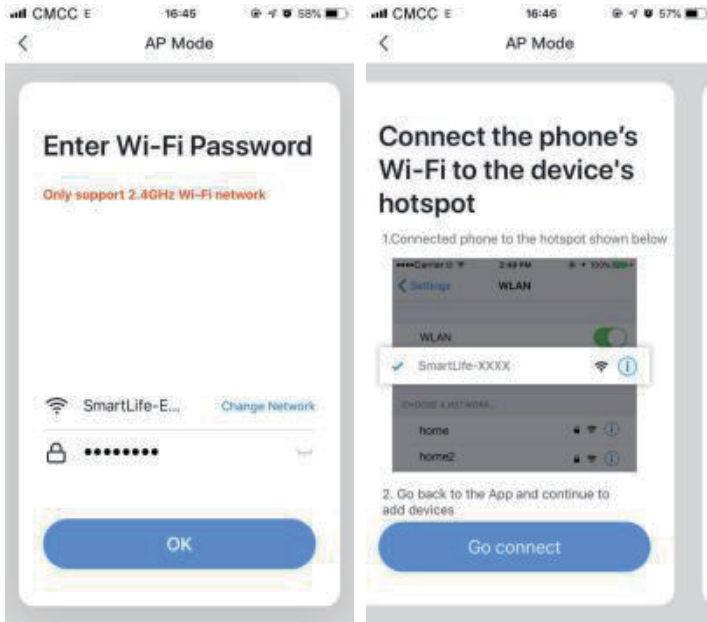




## NETWORK CONFIGURATION:

### AP Mode

1. When it into EZMode, Press and hold the button for 6s time, the blue LED indicator will blink slow, then enter the AP mode.
2. Make sure your APP is connected to the Internet and both the device and APP are in AP Mode.
3. Input the SSID and password for the Wi-Fi Network then open the Wi-Fi list, select Smartlife\_XXXX, and get back when connected successfully, it will show "Connecting now" then.
4. Once it is connected successfully, click done and return to the device main interface.
5. Once the device has connected successfully and added to the APP, the LED will turn off.



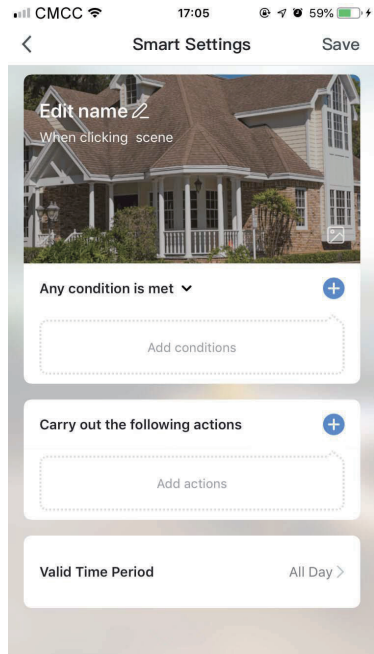
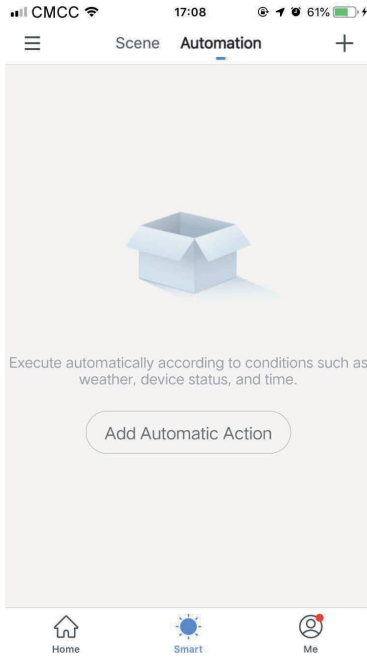
## **REMOVE DEVICES:**

Select "Remove Device" to remove device from your account.

Select "Restore Factory Setting" to remove the device from your account and clear all history recorded in the cloud.

## CUSTOMISE SCENES:

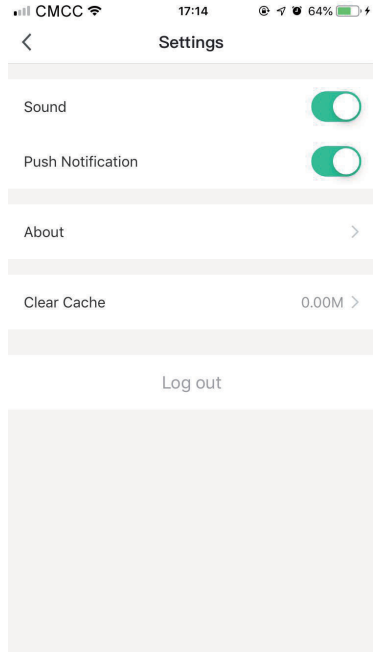
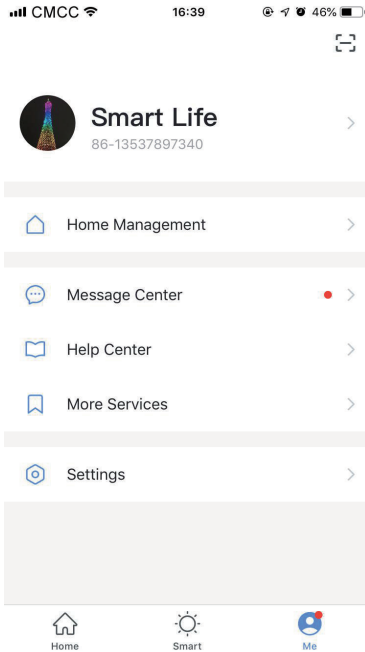
You can associate two devices to create your own scene.



## SHARE & PUSH NOTIFICATION:

**Sharing:** Share your devices to other people. Select Profile menu and choose Device Sharing.

**Push Notification:** Choose Settings (Top Right Corner) and turn on the Push notification



## COMPATIBLE WITH AMAZON ALEXA / GOOGLE HOME

### Connecting your device to Amazon Alexa

1. After the door sensor has been added to "Smart Life" App, open Alexa App on your phone.
2. Search for Skill "Smart Life" and enable
3. Sign in to your "Smart Life" account in Alexa
4. Go to Alexa Smart Home section and Discover your Devices

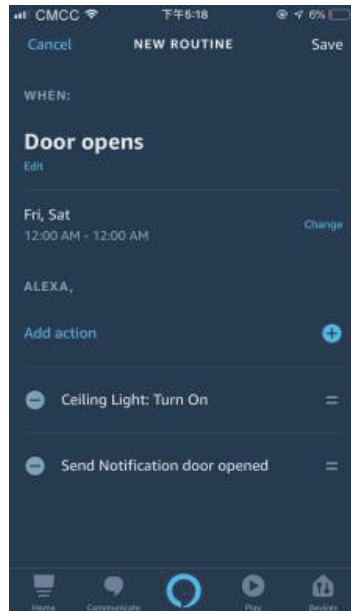
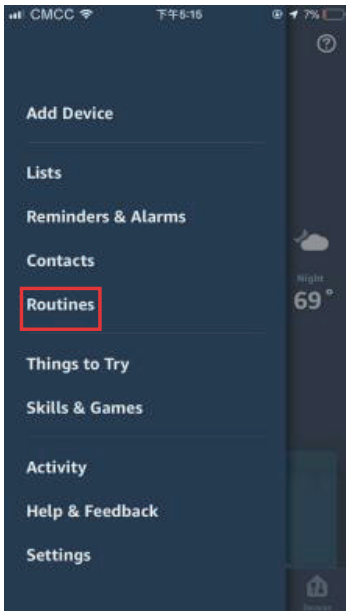
### 5. Control Device

The following voice commands are supported:

- Alexa, is the door locked?
- Alexa, is the door sensor locked?

### 6. Create Routines

Select Routines to create ,then you can perform a series of actions, like reading the weather and turning on the lights, with single command.



## COMPATIBLE WITH AMAZON ALEXA / GOOGLE HOME

### Connecting your device to Google Home

1. After the door sensor has been added to "Smart Life" App, Log in the Google Home App and find the Home Control
2. Manage account to find the APP "Smart Life"
3. Enter your account and password
4. Agree the Smart Life to work with Google Assistant.

### 5. Control Device

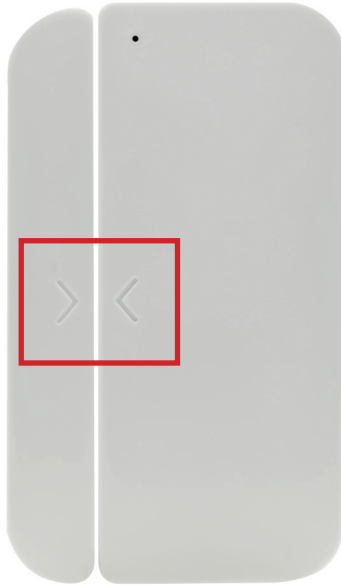
(Note:Don't use similar words style to name the device, such as door sensor and front door sensor)

You can now control your devices using voice through your Google Home product. The following voice commands are supported:

- Ok Google, is the door sensor on or off ?

## TIPS:

1. Please make sure connect 2.4GHz Wi-Fi Network as the sensor does not support 5GHz Wi-Fi.
2. The connect position for sensor and magnetic contact: Small triangle on the sensor and magnetic contact must be at aligned to each other.



Distributed by:  
Electus Distribution Pty. Ltd.  
320 Victoria Rd, Rydalmere  
NSW 2116 Australia

[www.electusdistribution.com.au](http://www.electusdistribution.com.au)

Made in China