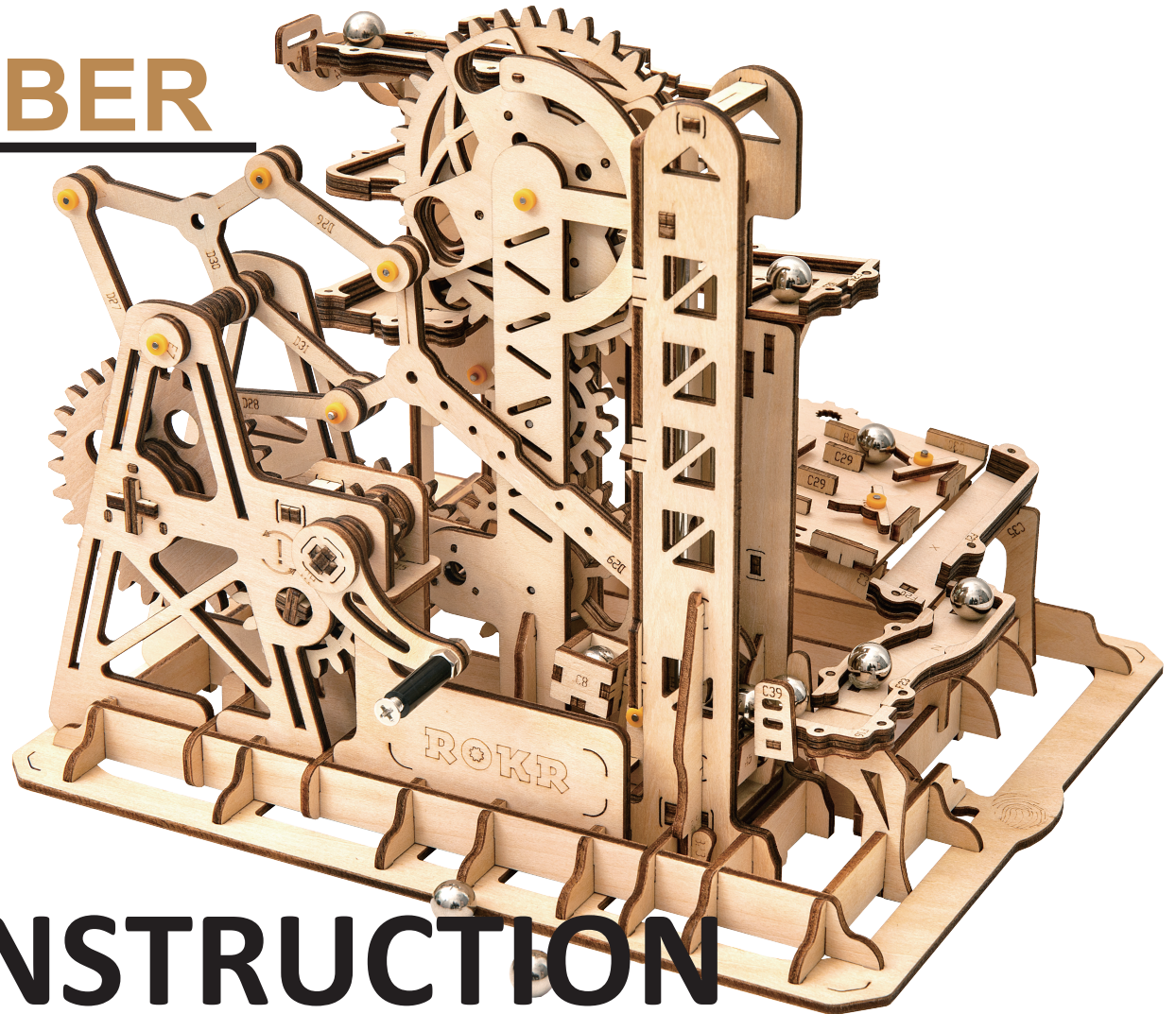


ROKR

MARBLE CLIMBER

LG504-v1

3D WOODEN PUZZLE
MECHANICAL MODELS



ASSEMBLY INSTRUCTION

WARNING:

This product is for people whose age is **over 14**, kids should assemble under the guidance of adults.

MAINTENANCE:

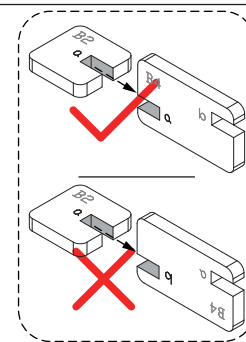
1. Keep the product far away from sources of ignition and water to prevent any damage.
2. Don't use any chemical reagents like alcohol, ammonia water or window cleanser to clean the product.
3. Use clean and soft fabric to clean the product if necessary.



Scan me, know me.

ATTENTION

- Store the small parts away after opening the package prevent losing when assembling.
- Make sure that the numbers match to their corresponding number while assembling.
- Additional pieces can be used as spare parts.
- For some difficult assembling steps, you can scan the QR codes for assembly videos.
- Use the sandpaper to polish the pieces if needed.
- Please keep the manual well for future reference.



*CUSTOMER SERVICE

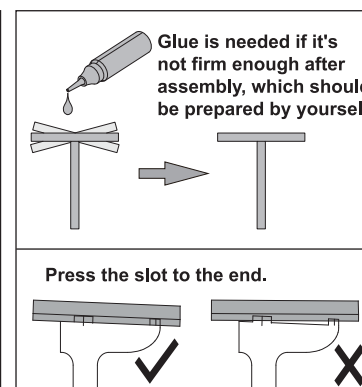
Facebook: [RokrOfficial](#)

Please contact us on Facebook, our online customer service group will try their best to help you solve any problems there. We offer online instruction support, you can find the latest version on our website: www.robotime.com.


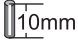






FAQ



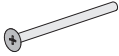


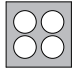
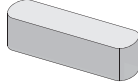
PROBLEM	CAUSE	SOLUTION
The assembly could not rotate freely.	<ol style="list-style-type: none">1 The friction between boards is excessive.2 The connecting points are not smooth.	<ol style="list-style-type: none">1 Wax related parts.2 Polish the connecting points with sandpaper and make sure each part is well assembled.
The marble gets stuck in the track.	<ol style="list-style-type: none">1 The slot is not connected to the end correctly.2 The track is not inclined appropriately.	<ol style="list-style-type: none">1 Press the slot to connect it properly with the end.2 Check if the tracks are engaged with each other appropriately and make sure each part is well assembled.

Tips:



Parts List

Item	Shaft Sleeve	Steel Shaft	Steel Shaft	Steel Shaft	Steel Shaft	Steel Shaft	Steel Shaft	Steel Shaft
Number	P1	P2	P3	P4	P5	P6	P7	P8
Illustration								
Quantity	40	2	9	4	1	1	1	2

Item	Steel Shaft	Isolation Column	Screw	Screw Nut	Steel Ball	Sealing Sticker	Wax
Number	P9	P10	P11	P12	P13	P14	P15
Illustration							
Quantity	2	1	1	2	10	1	1

*Due to customs policy in international shipping, the wax and glue may not be included. Please prepare them yourself.



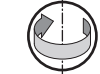
Make sure the gears are appropriately engaged with each other



Polish the parts with sandpaper



Make sure the parts could rotate freely



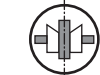
Perspective changed. Rotate the product based on the direction of arrow



Special attention in assembly



Complete 2 pieces



Assemble the parts symmetrically



Wax or lubricant needed

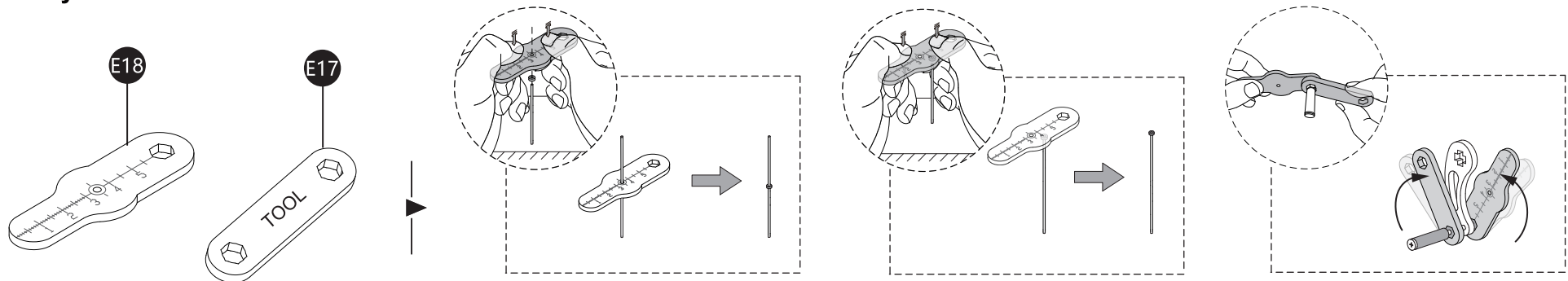


Step1



Step2

Assembly Tools



1

A1

B1

B2

B3

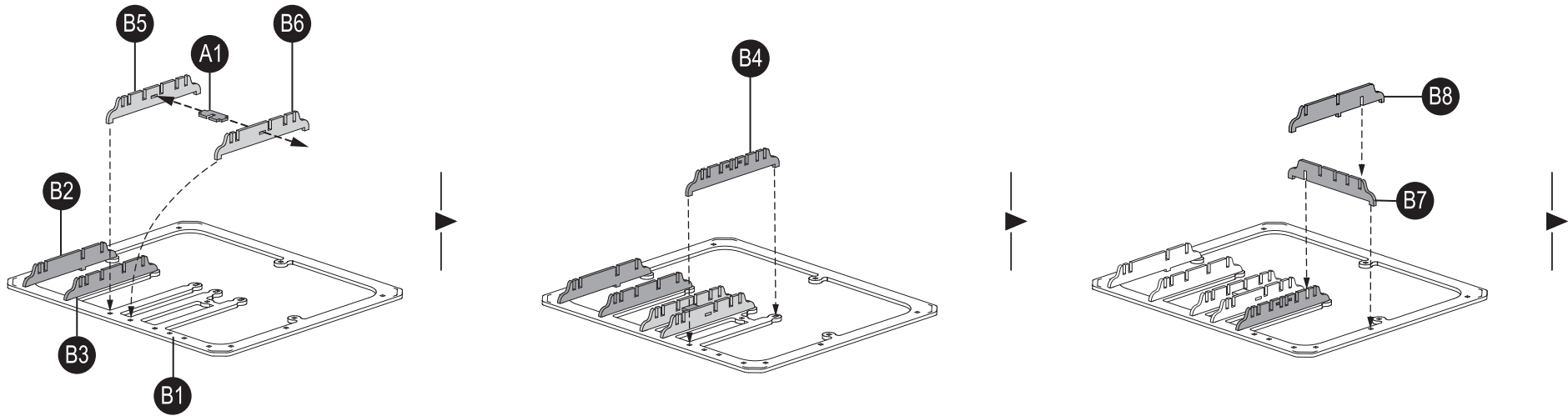
B4

B5

B6

B7

B8



B9

B24

B25

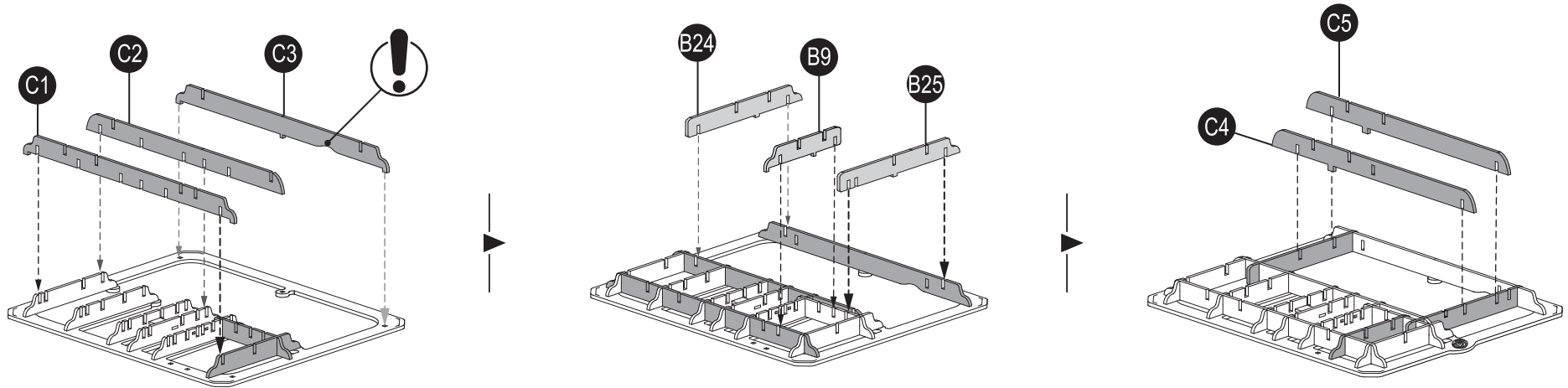
C1

C2

C3

C4

C5



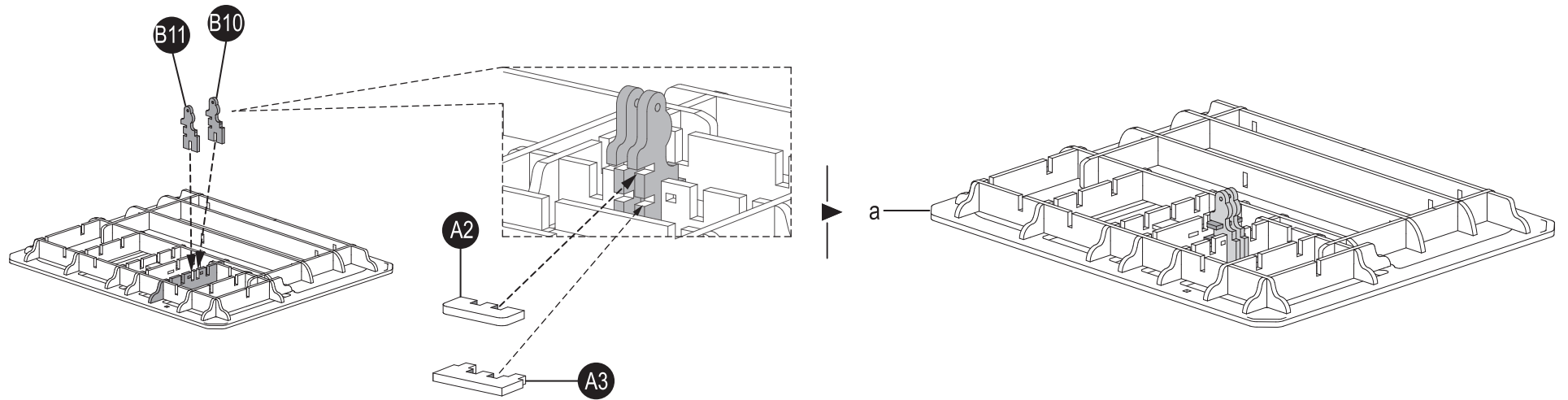
2

A2

A3

B10

B11



3

A4

A5

B14

B15

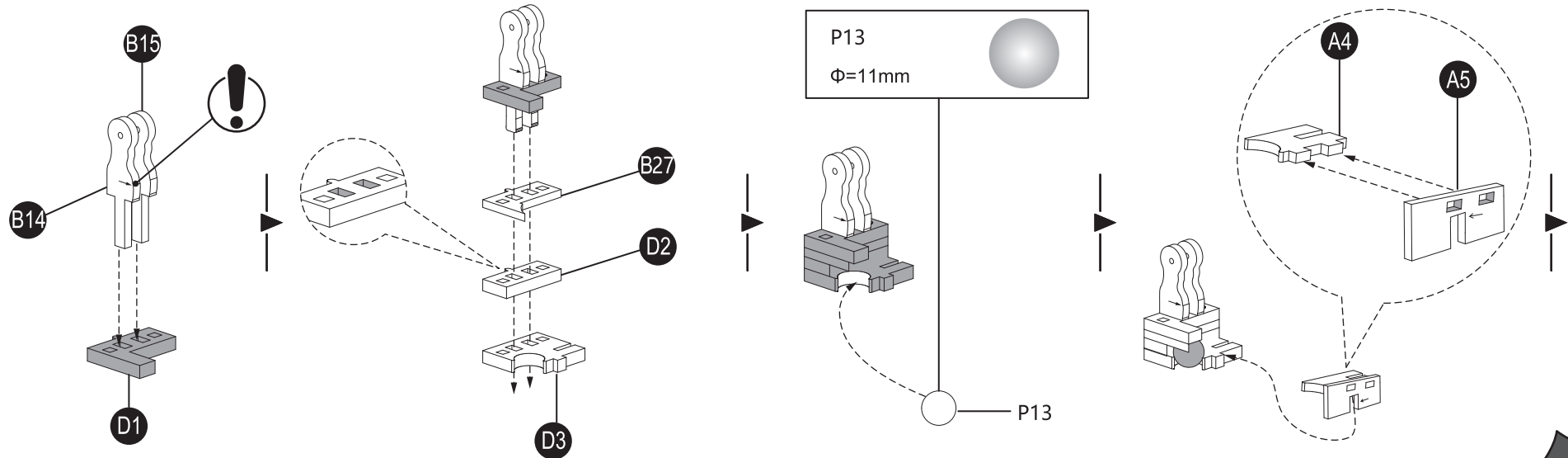
B27

D1

D2

D3

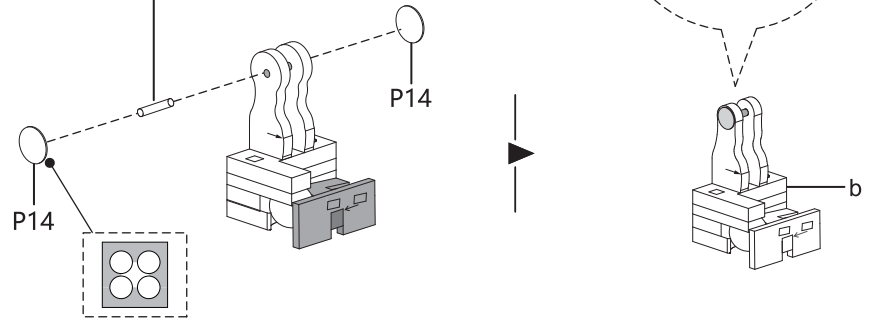
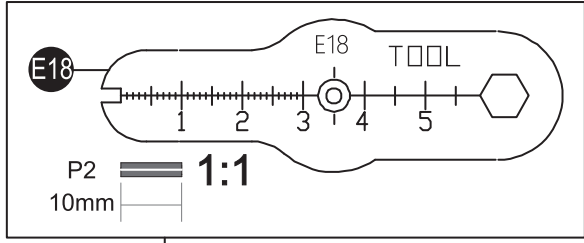
P13



E18

P2

P14 x2



4

A6

B12

B13

B16 x2

B17

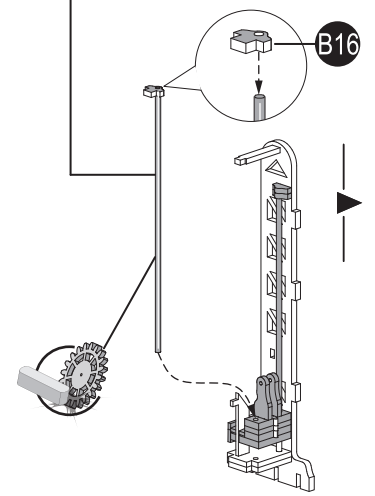
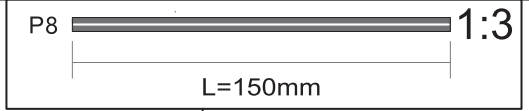
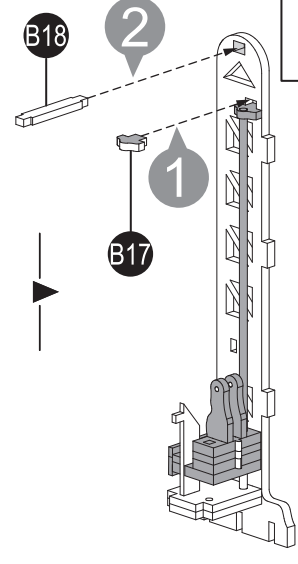
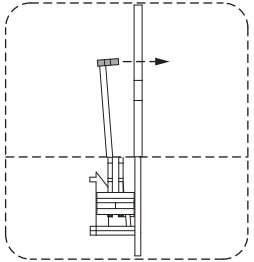
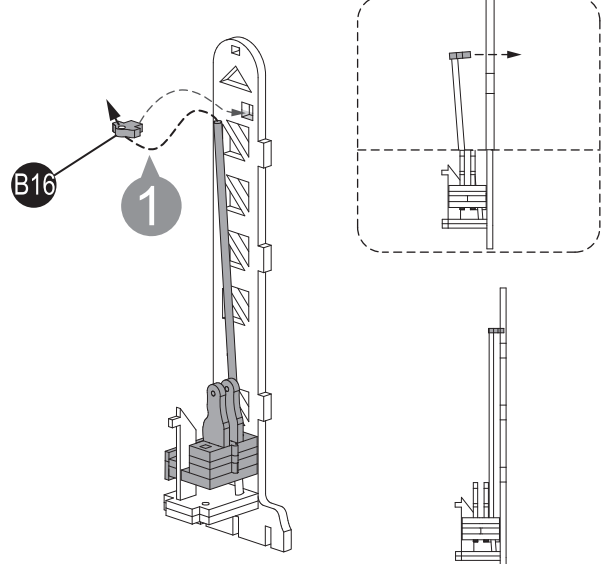
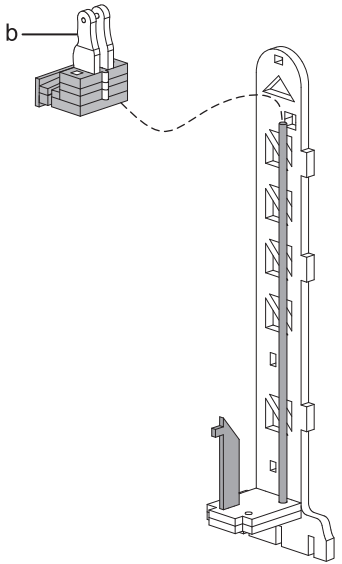
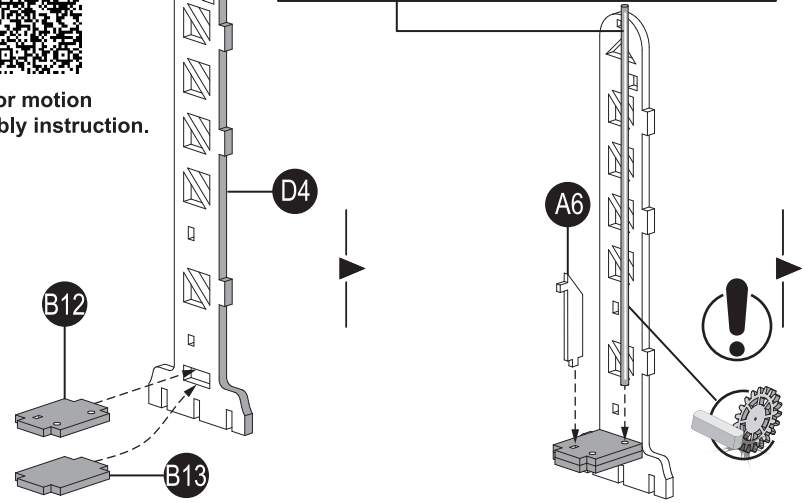
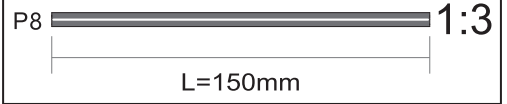
B18

D4

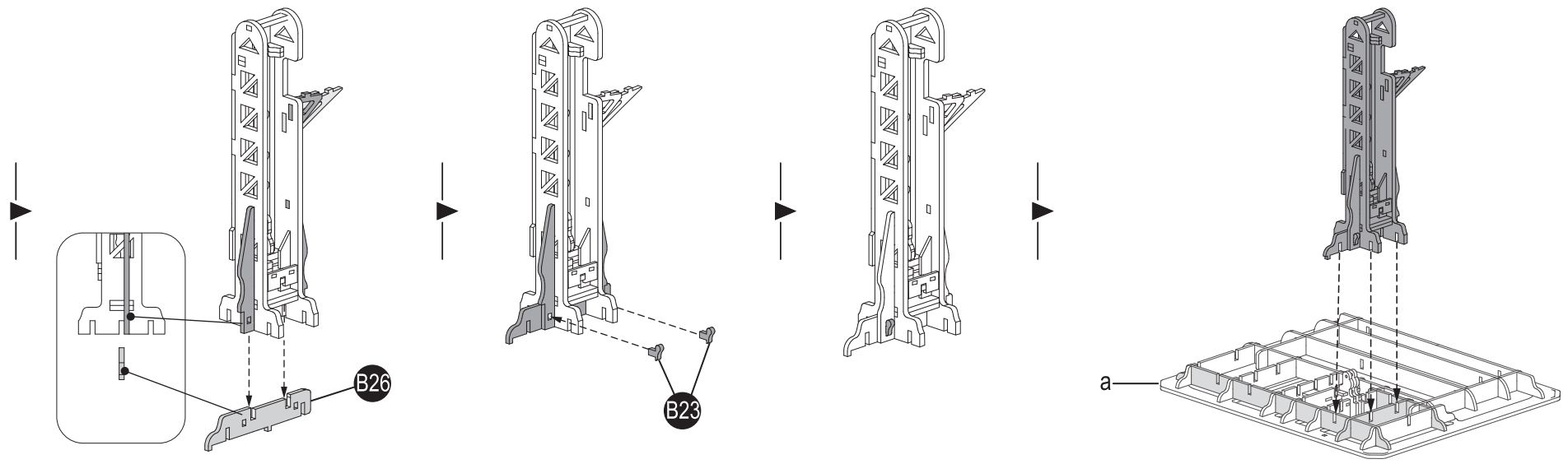
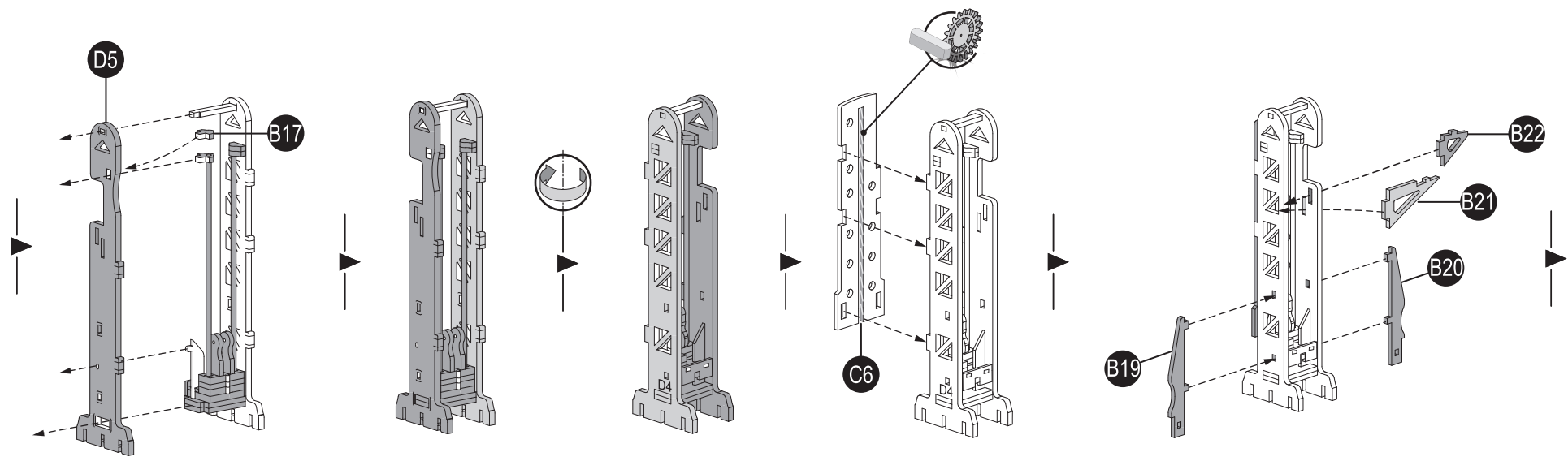
P8 x2



Scan for motion assembly instruction.

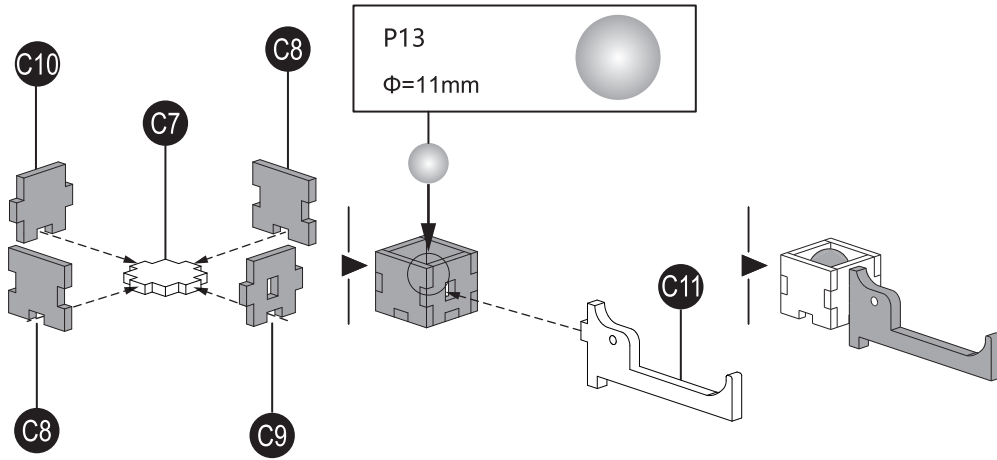


- B17
- B19
- B20
- B21
- B22
- B23 x2
- B26
- C6
- D5



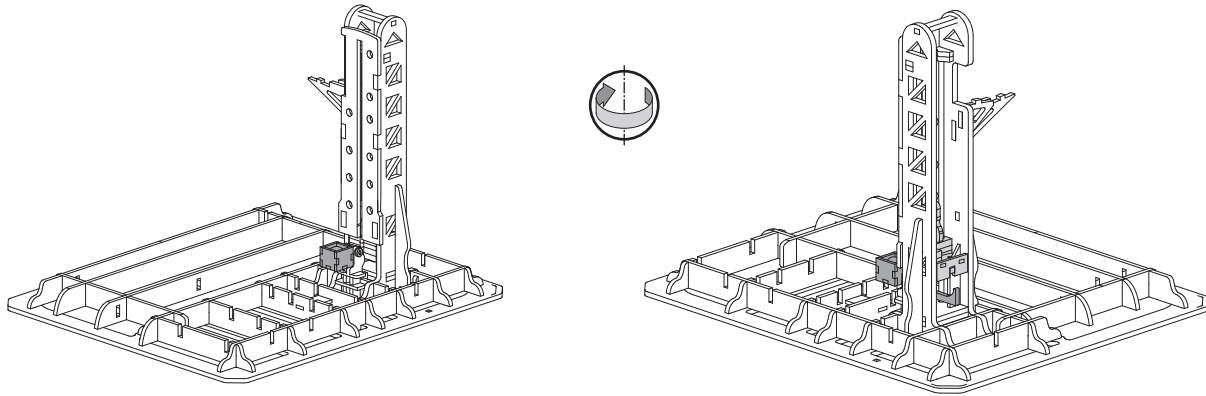
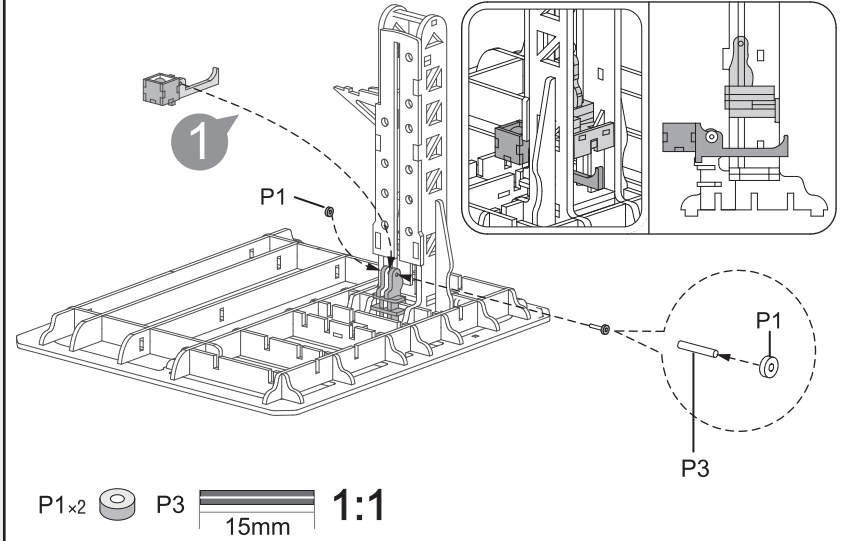
5

- C7
- C8 x2
- C9
- C10
- C11
-
- P13



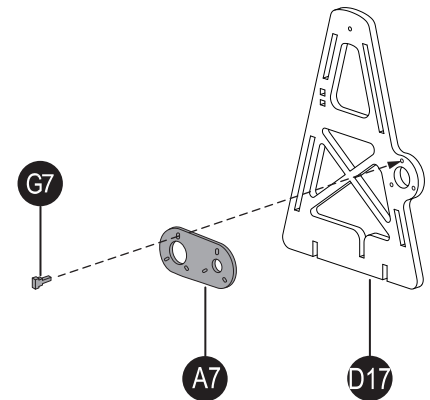
6

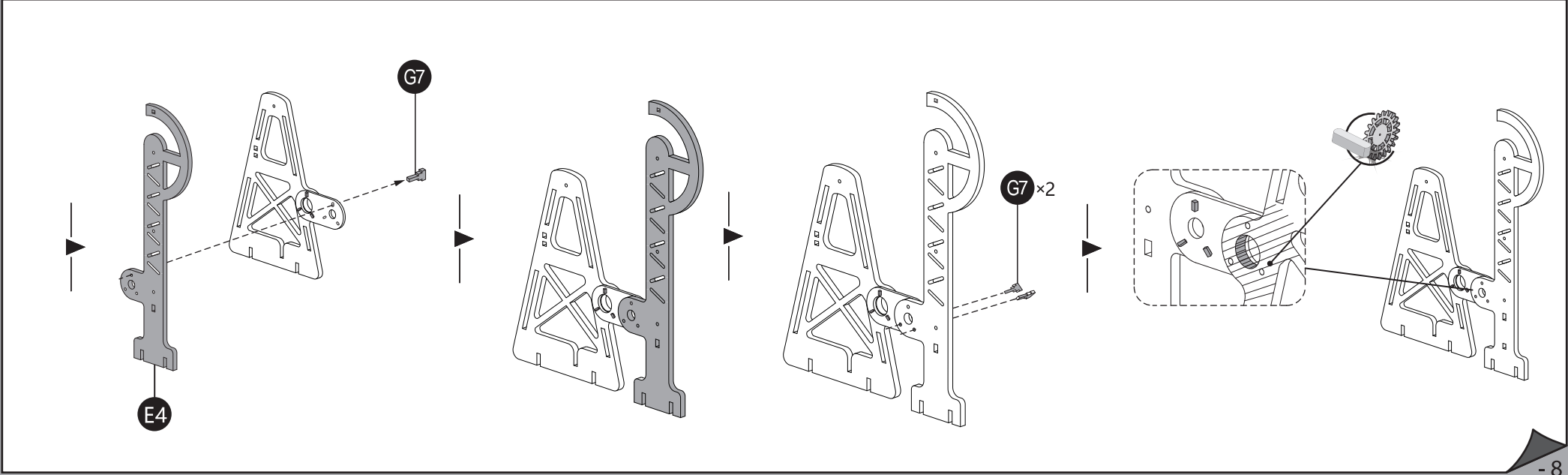
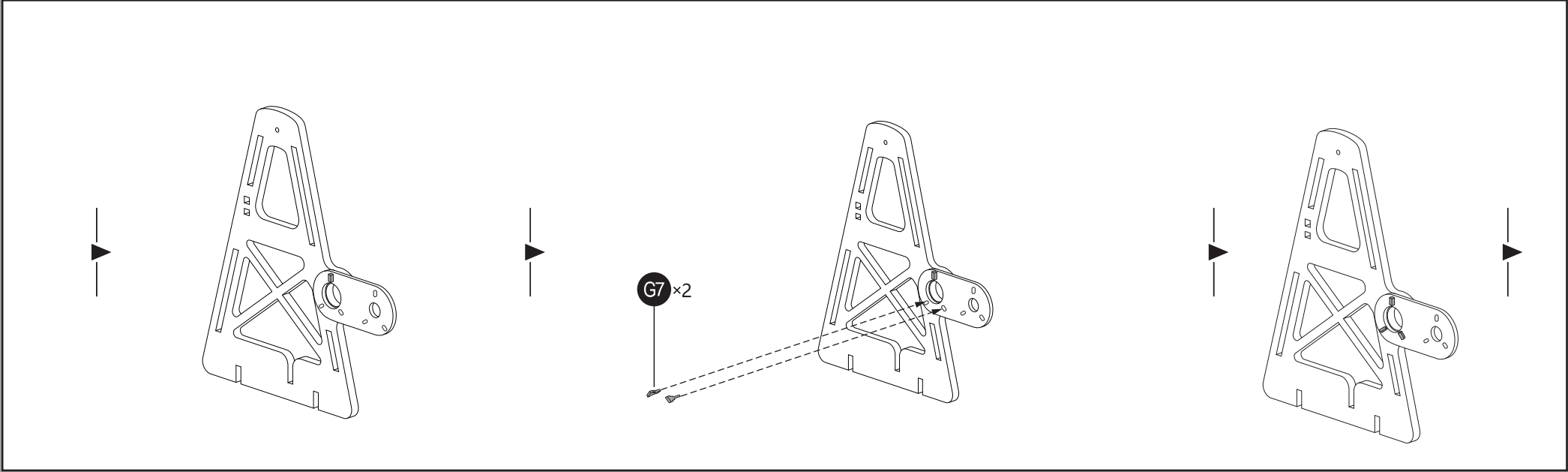
- P1 x2
- P3



7

- A7
-
- D17
-
- E4
-
- G7 x6





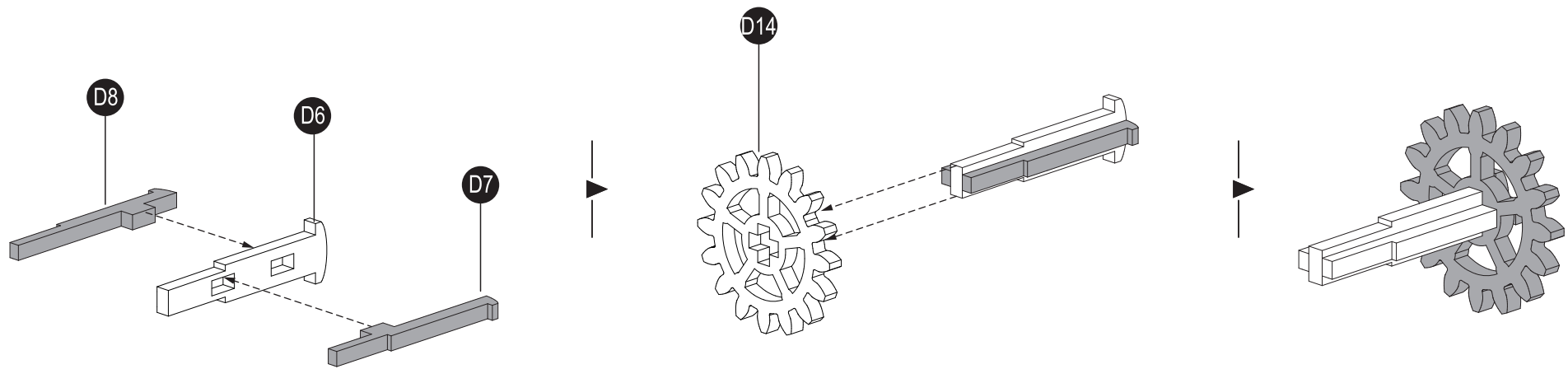
8

D6

D7

D8

D14



9

A8

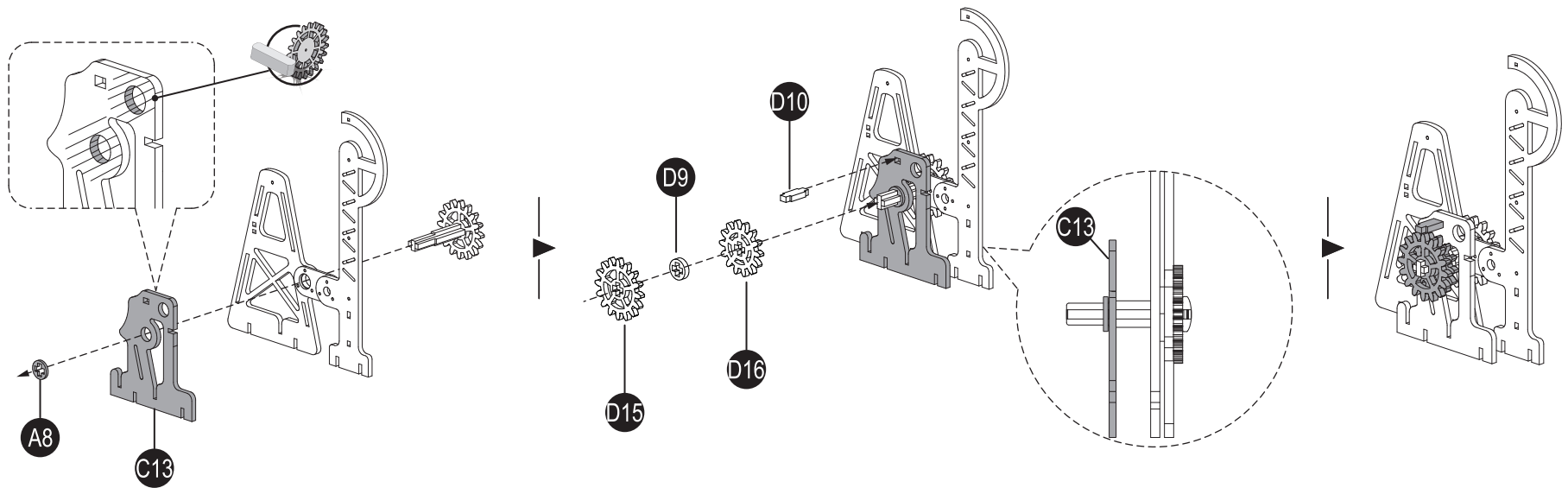
C13

D9

D10

D15

D16



10

A8

D11

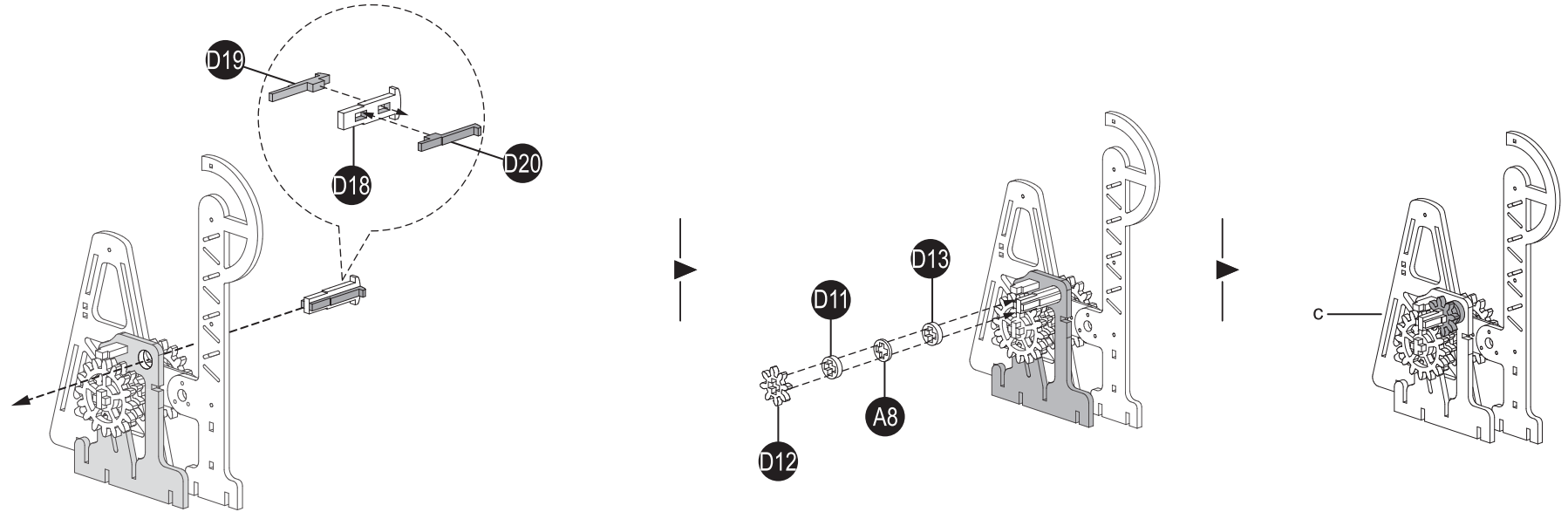
D12

D13

D18

D19

D20

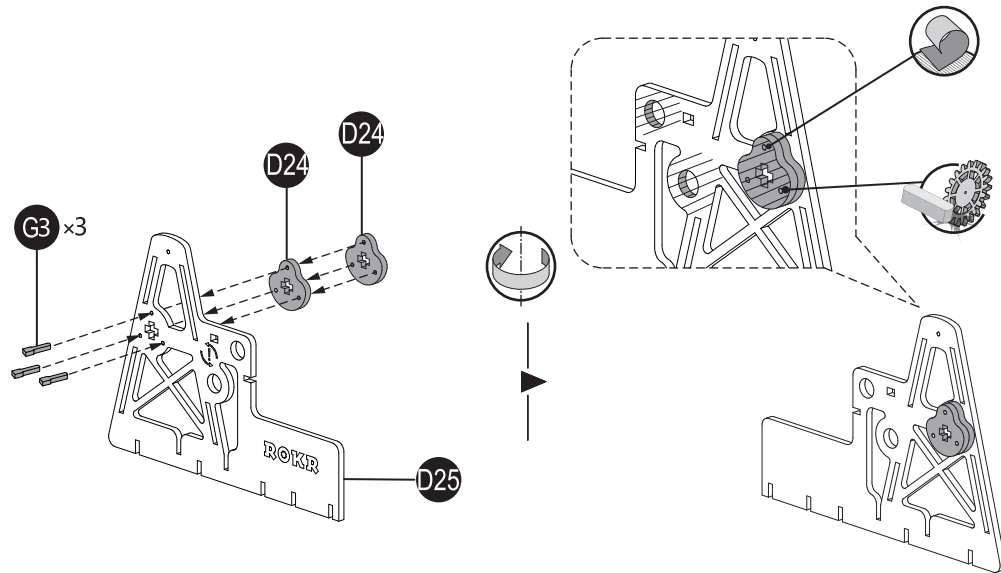


11

D24 x2

D25

G3 x3

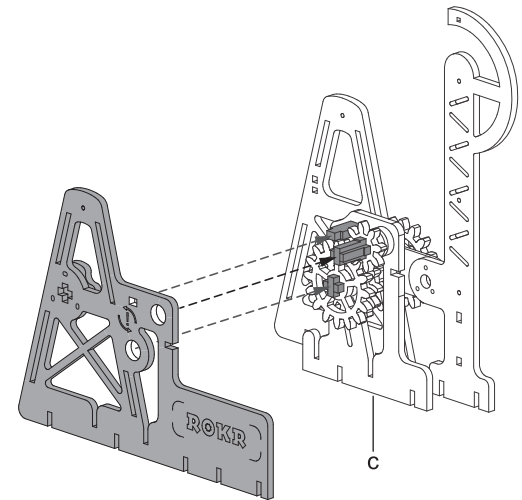


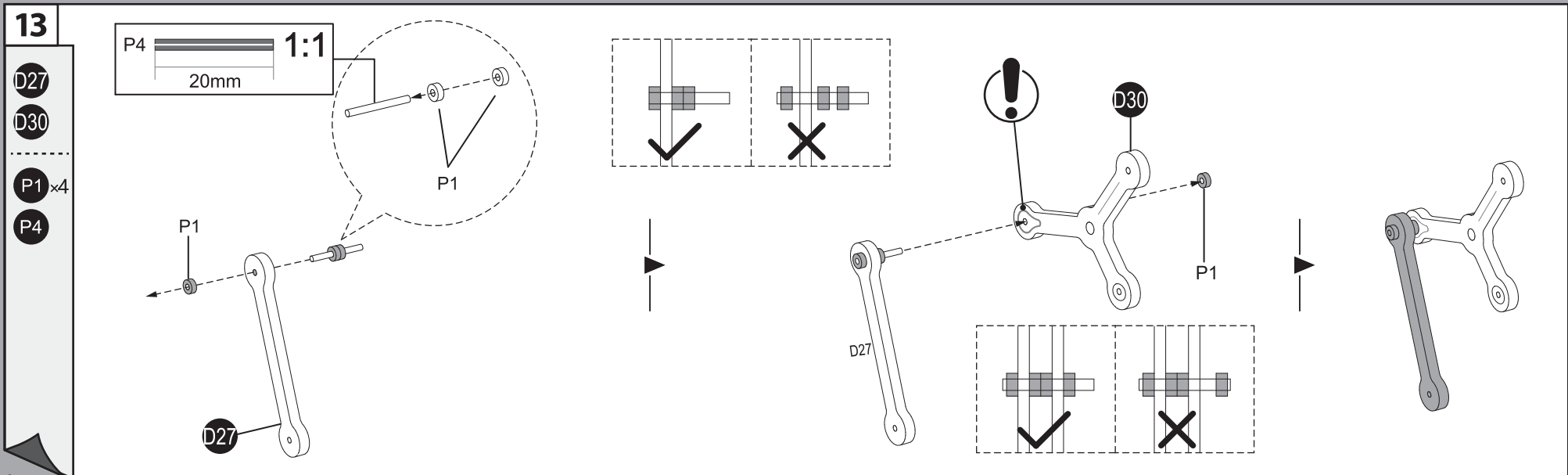
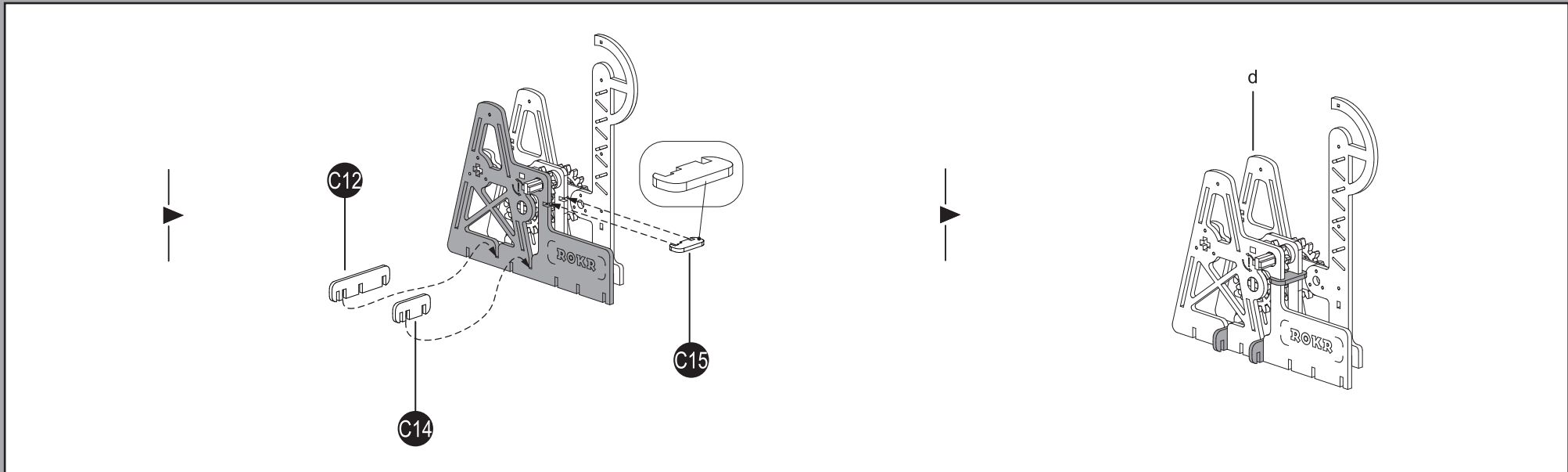
12

C12

C14

C15





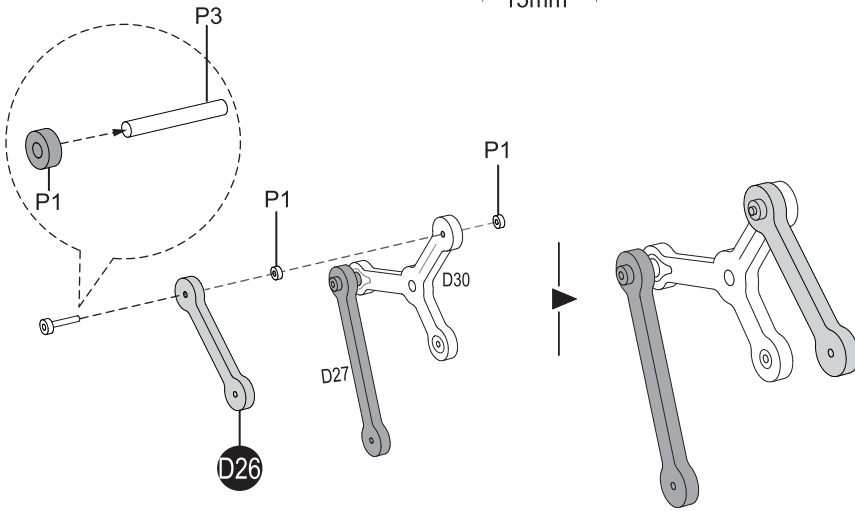


14

D26

P1 x3

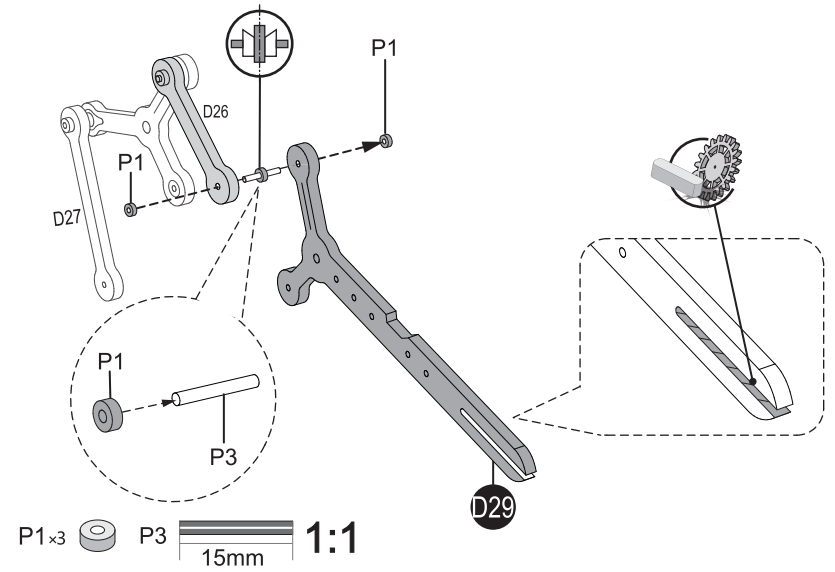

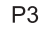
P3

P1 x3  P3  15mm 1:1**15**

D29

P1 x3

P3



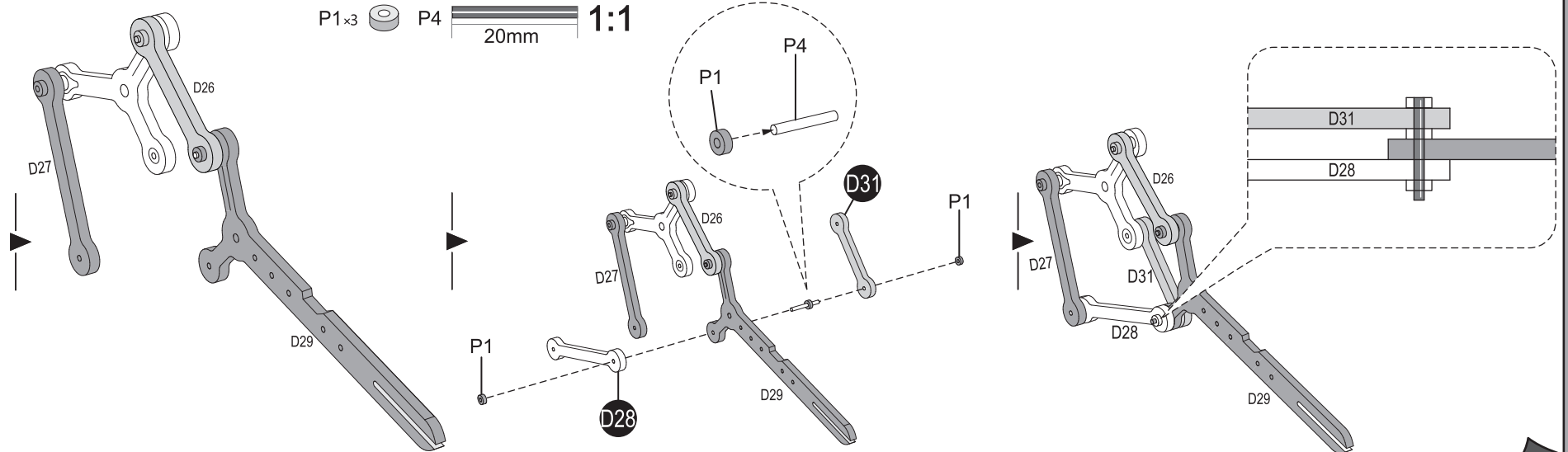
P1 x3  P3  15mm 1:1**16**

D28

D31

P1 x3

P4

P1 x3  P4  20mm 1:1

17

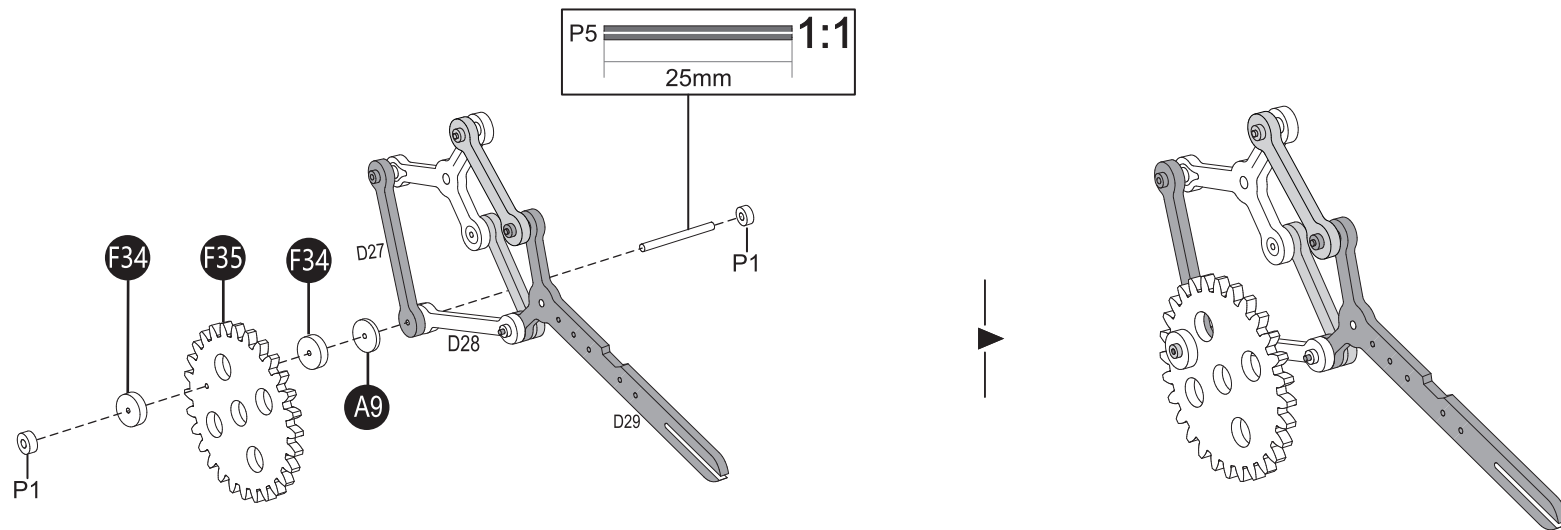
A9

F34 x2

F35

P1 x2

P5



18

D21

D22

D23

