

# LED Digital Clock Kit

KJ-8910

Assembly and Instruction Manual

# Contents



**Time Capsule:**

1. Product Introduction ..... P.1

2. Tools You May Need ..... P.1

3. Mechanical Parts List ..... P.1

4. Plastic Parts ..... P.3

5. Mechanical Assembly ..... P.3

**How it works** ..... P.8

**Trouble Shooting** ..... P.8

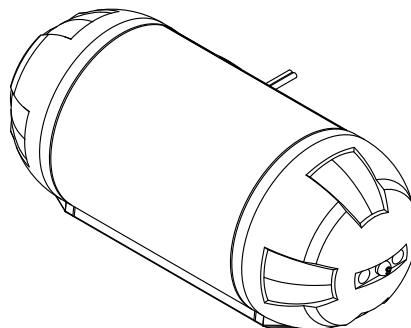


# TIME CAPSULE

## Product Introduction:

- ❖ A very interesting LED clock which you can build it by your own.
- ❖ There are 2 different hours' presentations, normal and rotating. Select by 'MODE' button.
- ❖ The minute display will be different each time when it changes to the next, there are total 8 different changes.

**Power Source: Dc9v x 100mA**



## Tools You May Need:

**Screwdriver**




**Long Nose Pliers**





**Diagonal Cutter**




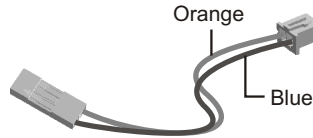
## Mechanical Parts List:

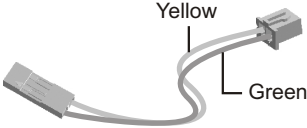
P1	Tapping Screw	
	Qty	
	2 (2x4)	

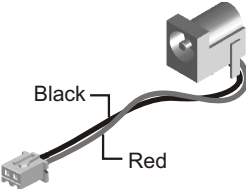
P2	Tapping Screw	
	Qty	
	8 (2.6x6)	

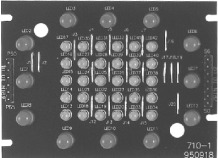
P3	Machine Screw	
	Qty	
	4 (2.6x6)	

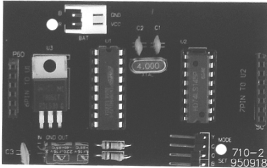
P4	Nut	
	Qty	
	4 (M2.6)	


P5	Blue & Orange Wire With Connector	
	Qty	
	1	

P6 Green & Yellow Wire With Connector	
 <p>Yellow</p> <p>Green</p>	Qty
	1

P7 Red & Black Wire With DC Jack	
 <p>Black</p> <p>Red</p>	Qty
	1

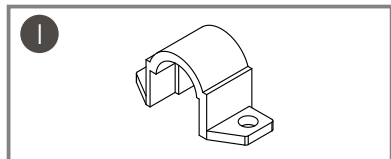
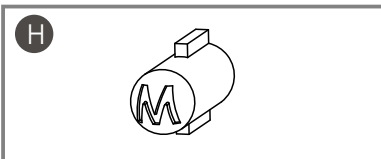
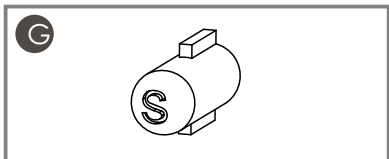
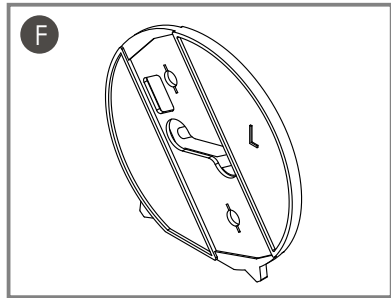
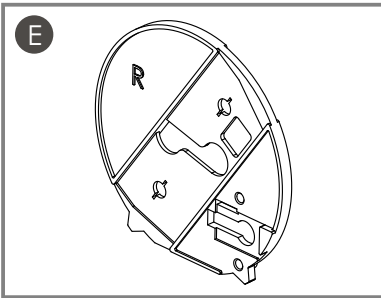
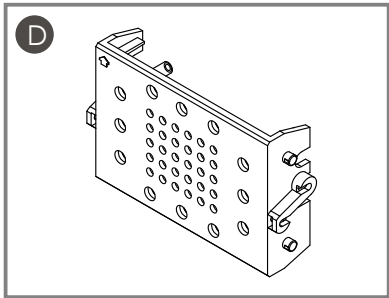
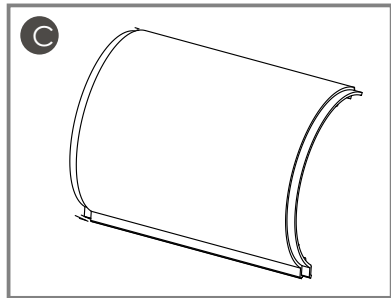
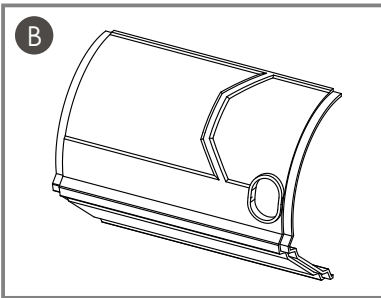
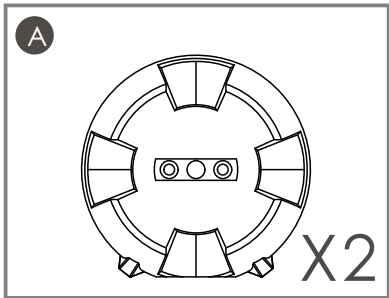
P8 Display PCB	
	Qty
	1

P9 Main PCB	
	Qty
	1

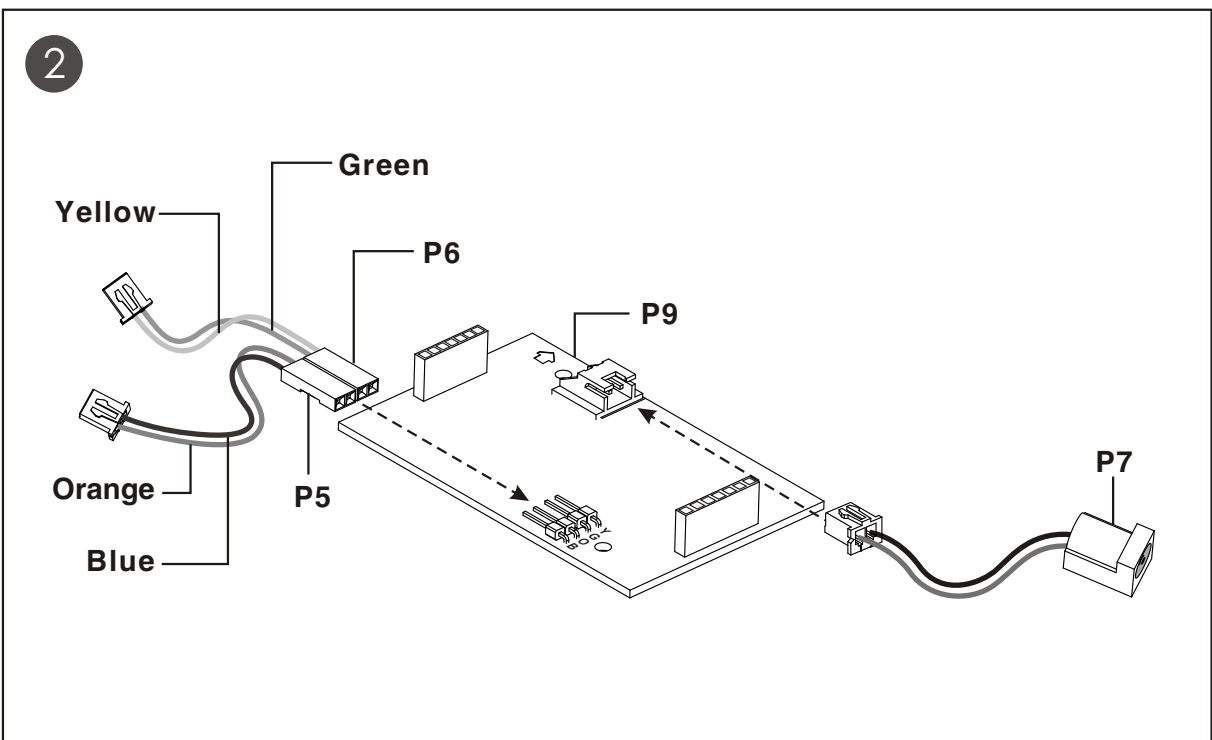
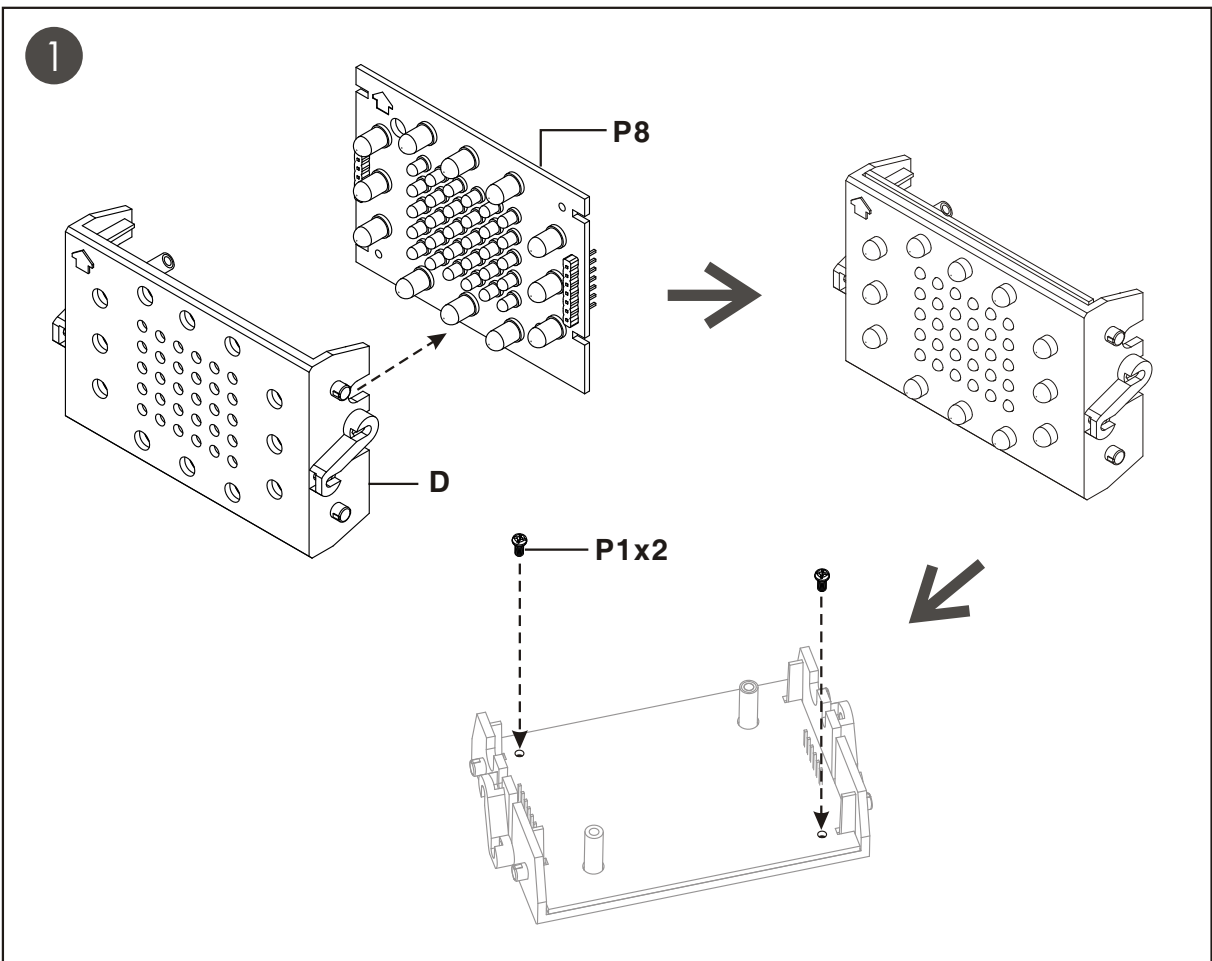
P10 Small PCB	
	Qty
	2

P11 Adaptor	
	Qty
	1

## Plastic Parts :

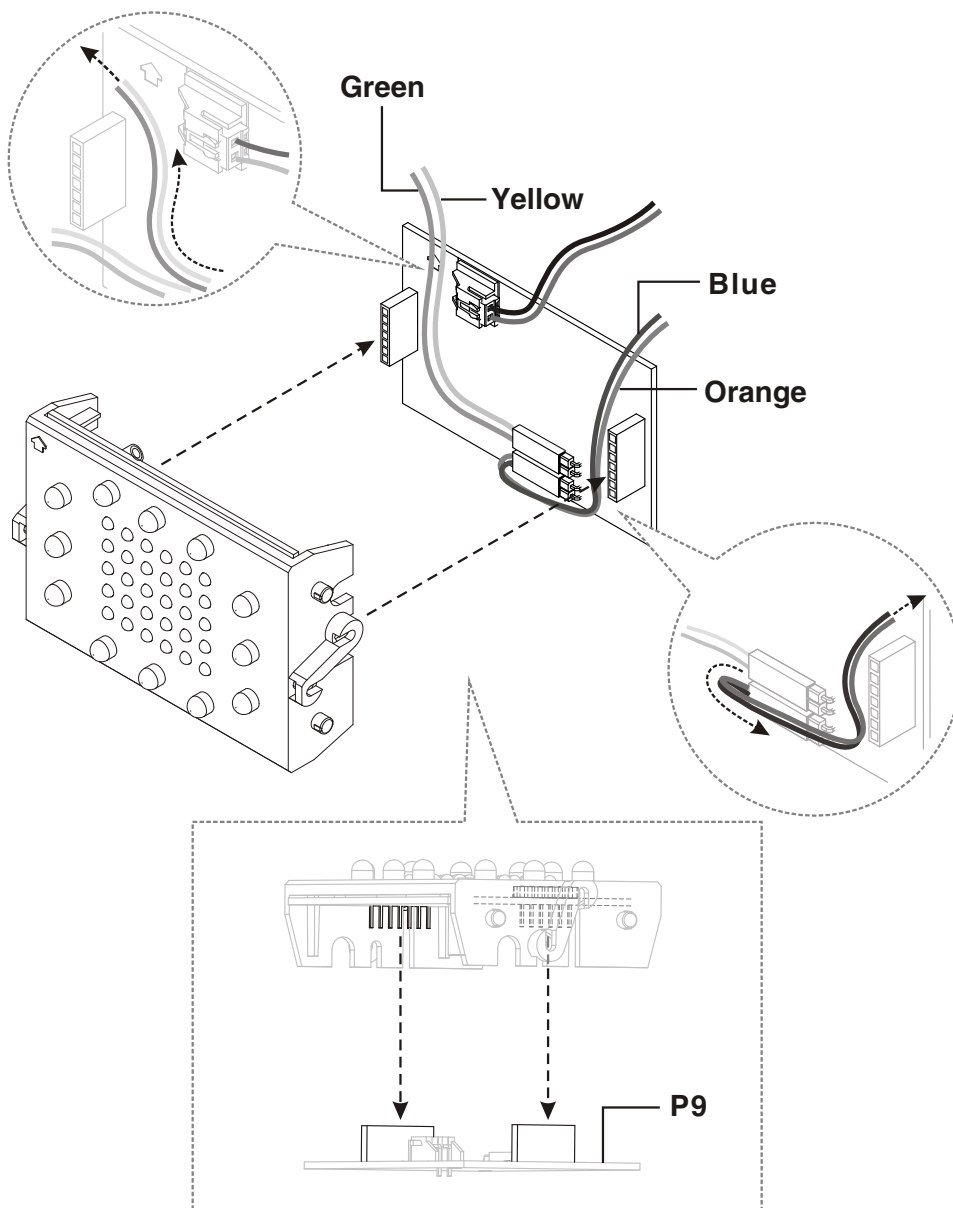


### Mechanical Assembly:

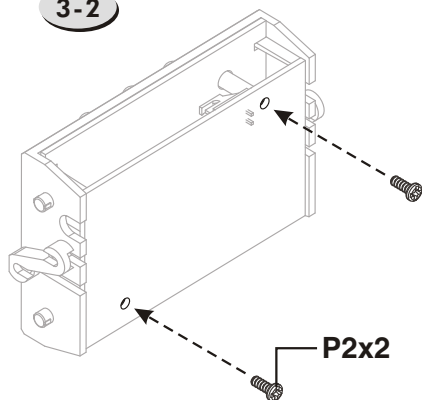


3

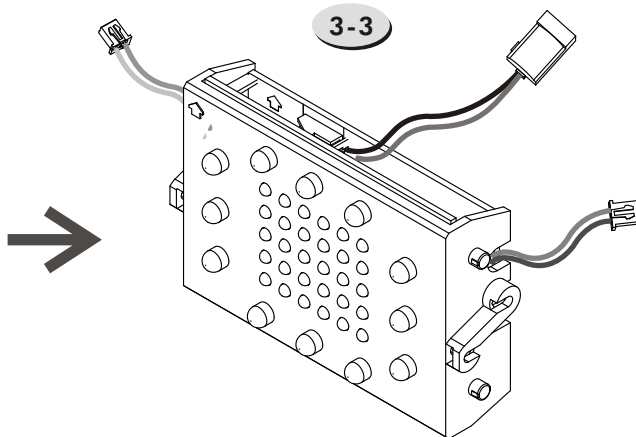
3-1

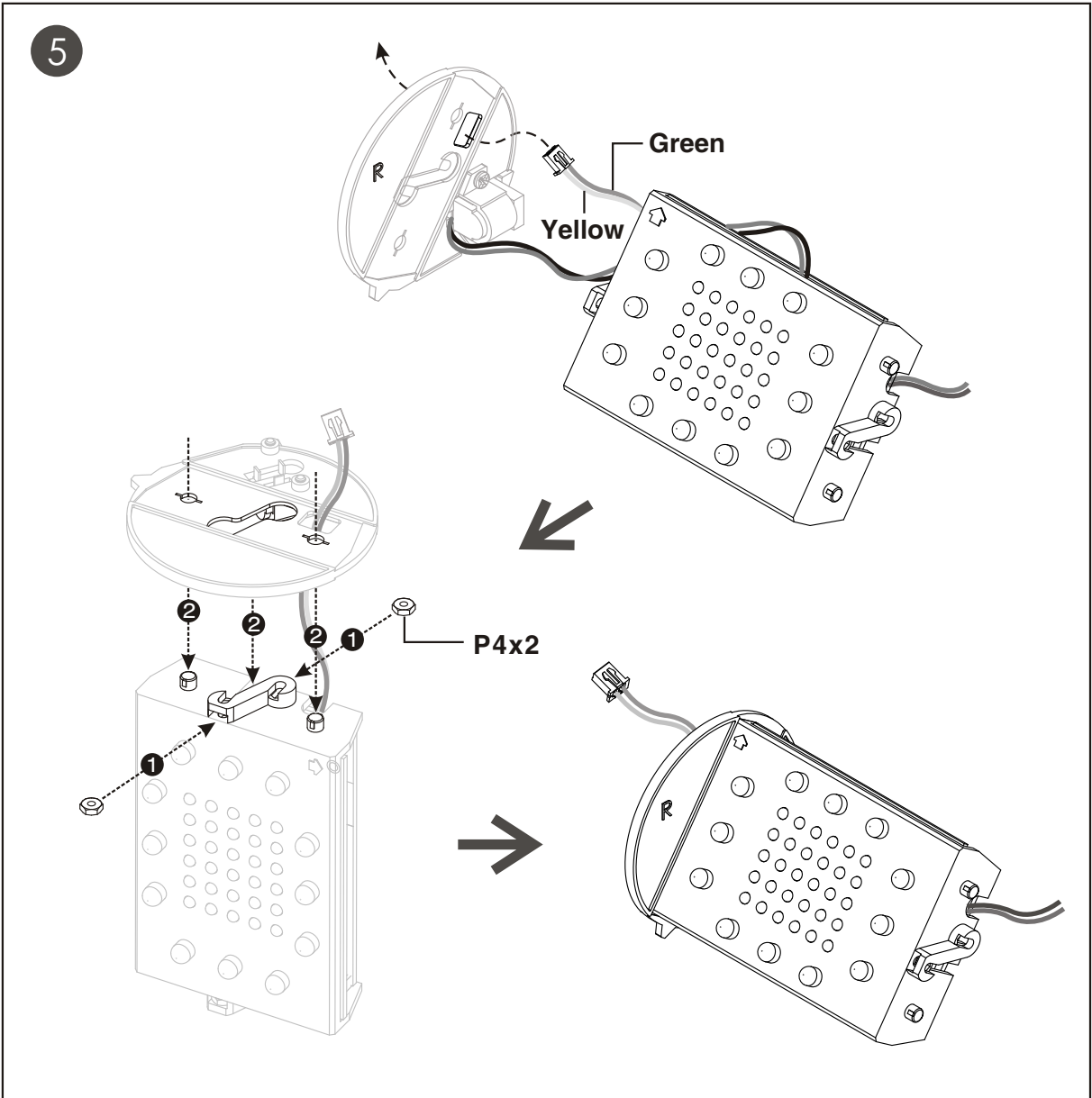
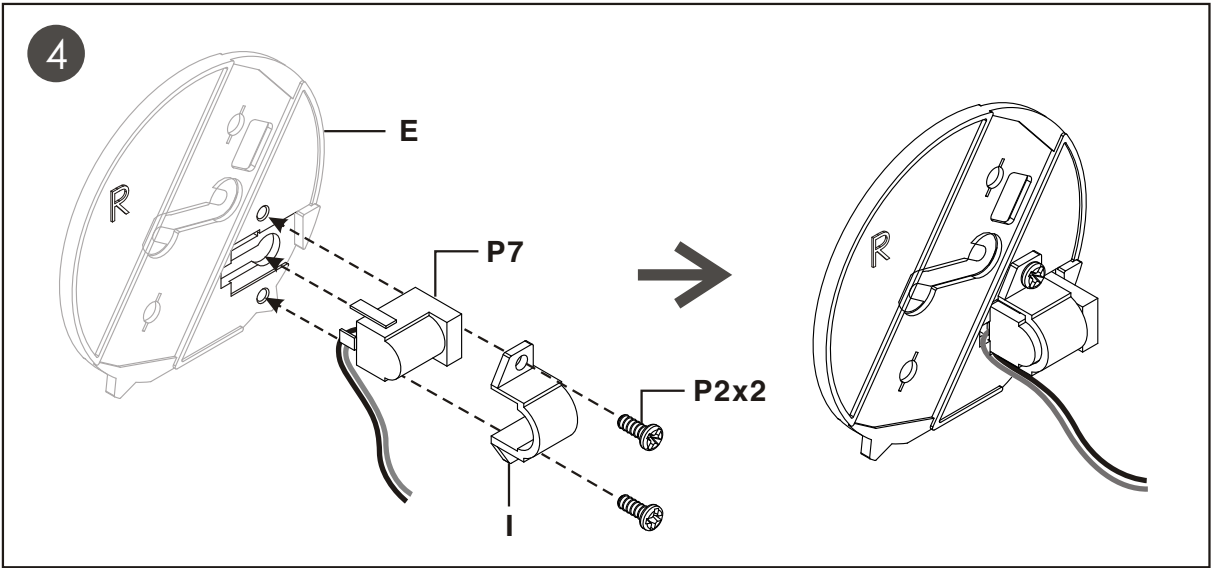


3-2

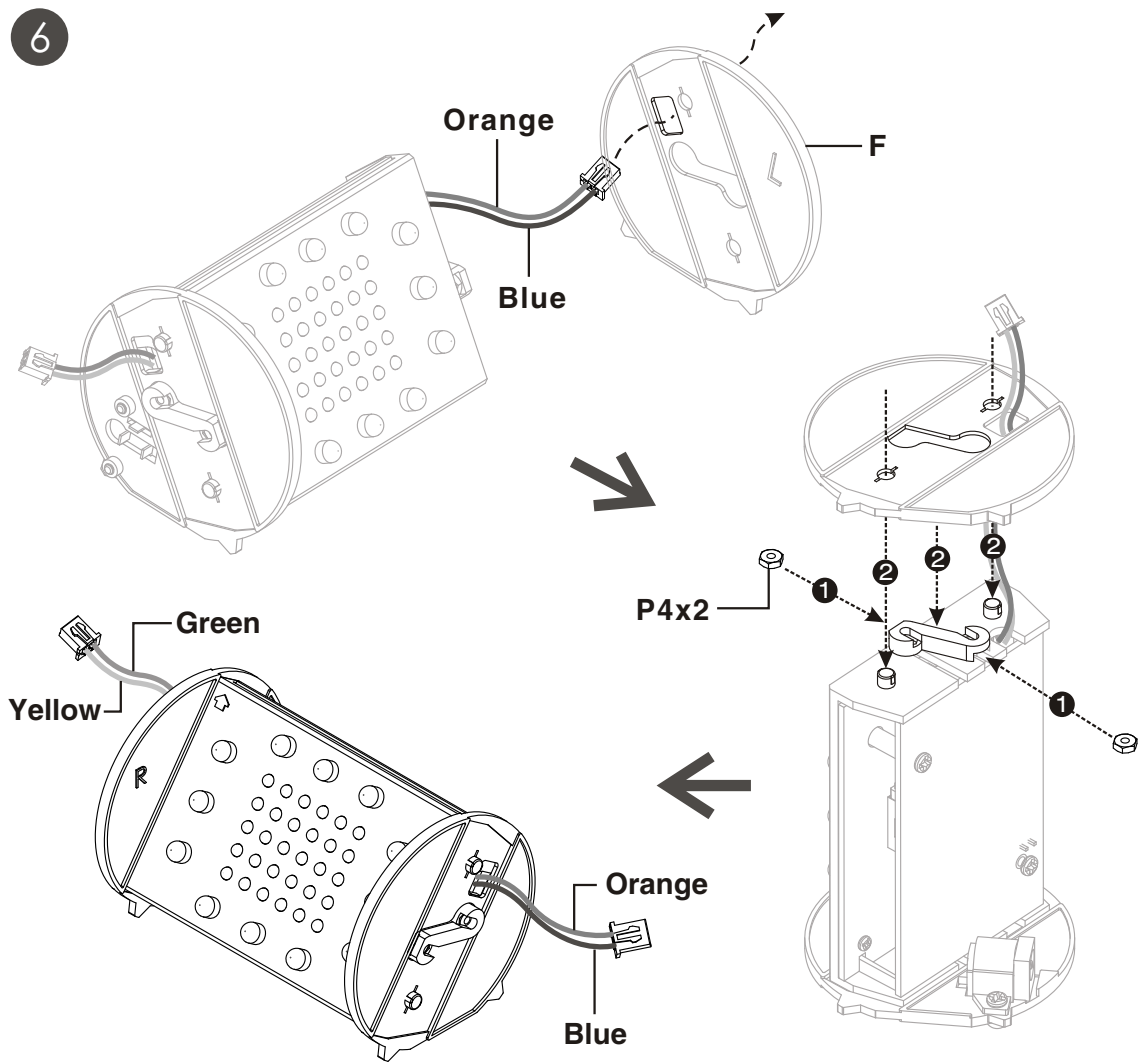


3-3

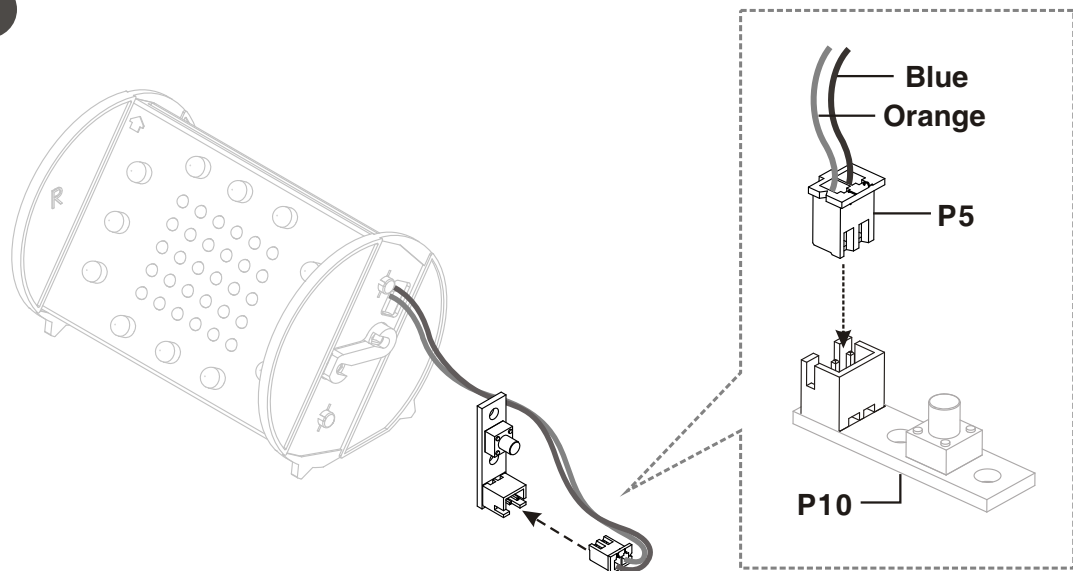




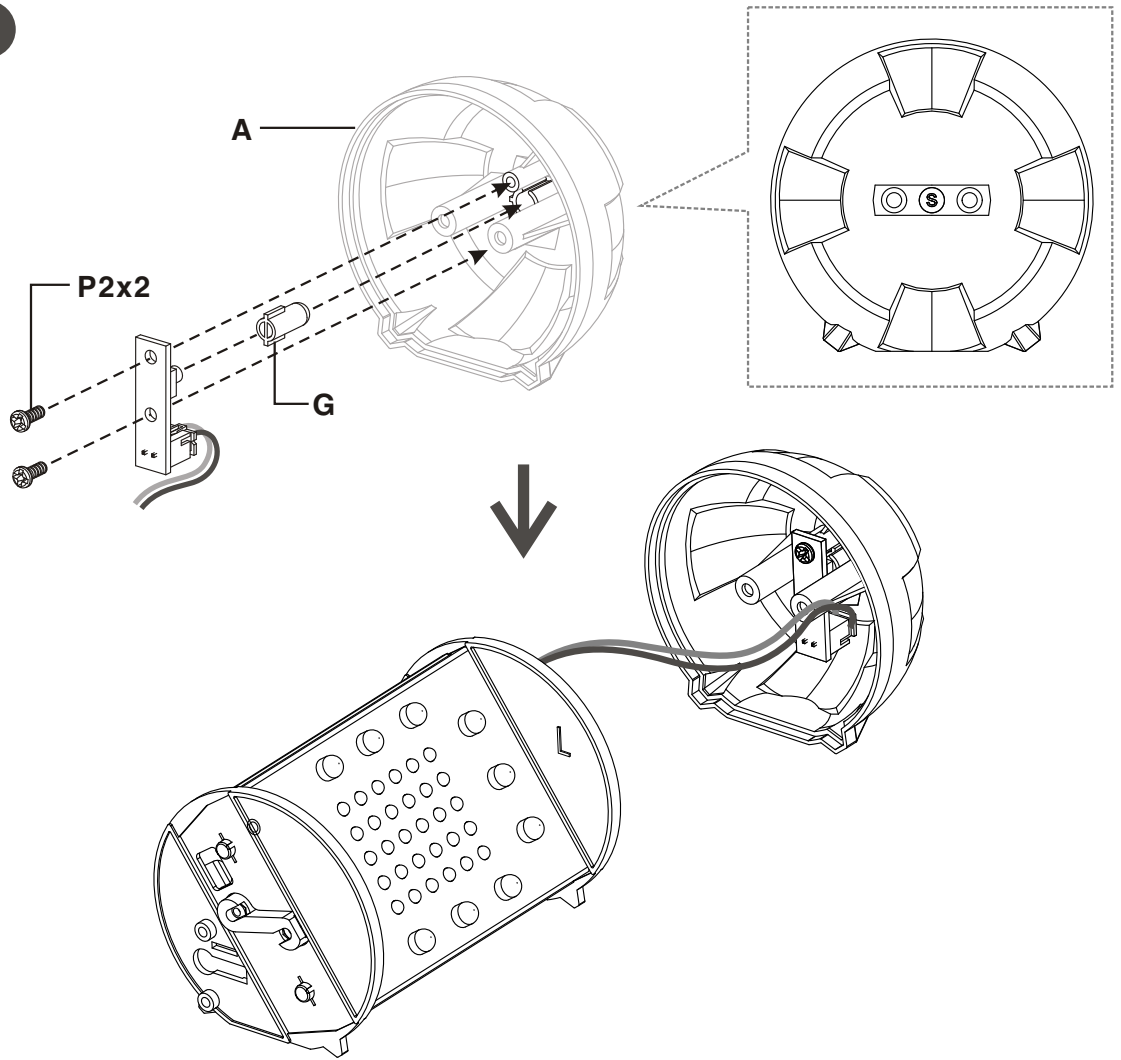
6



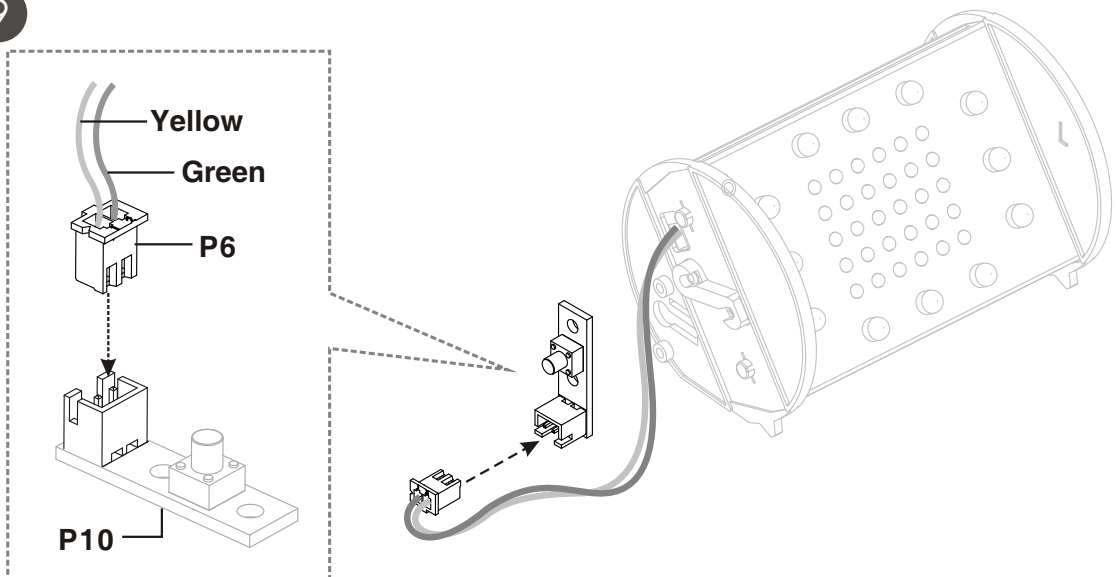
7



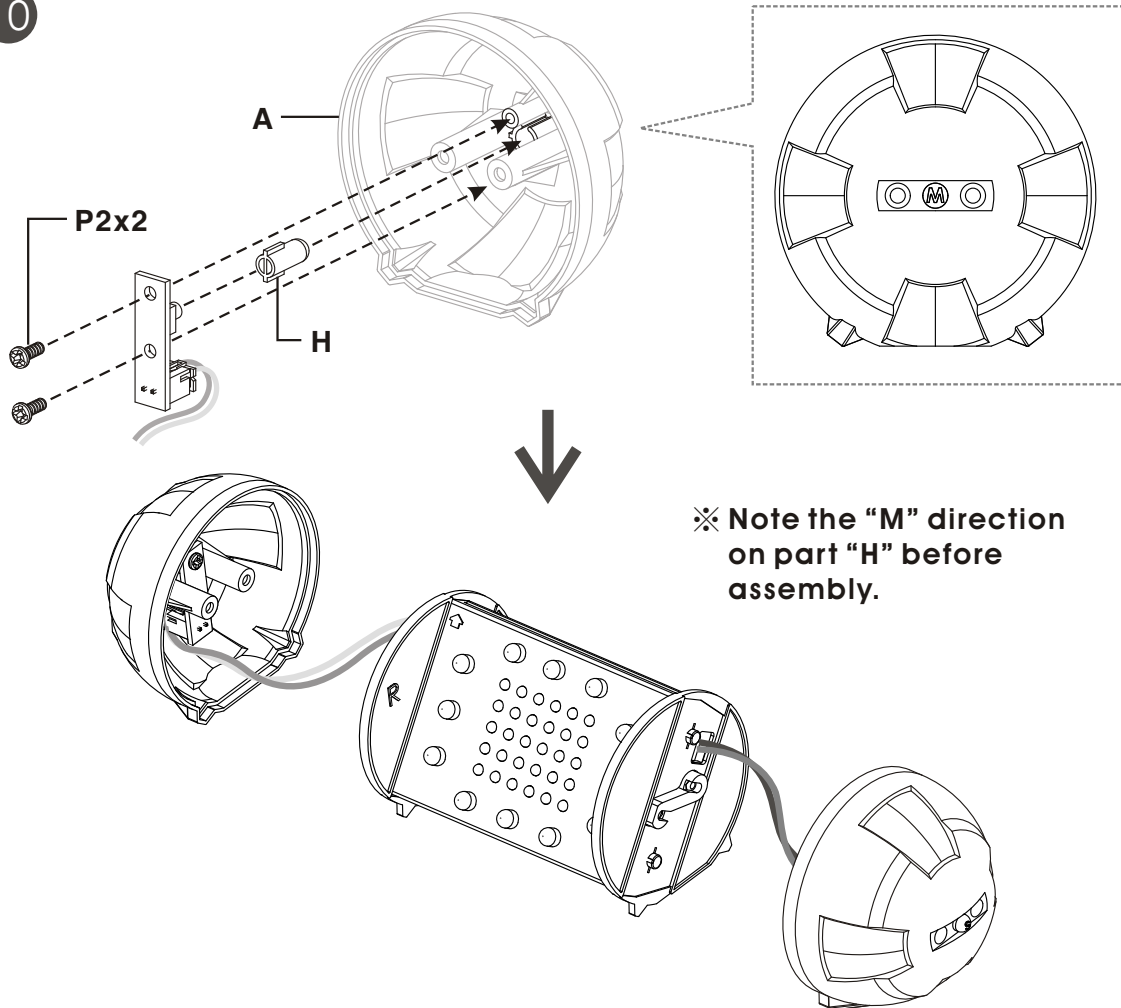
8



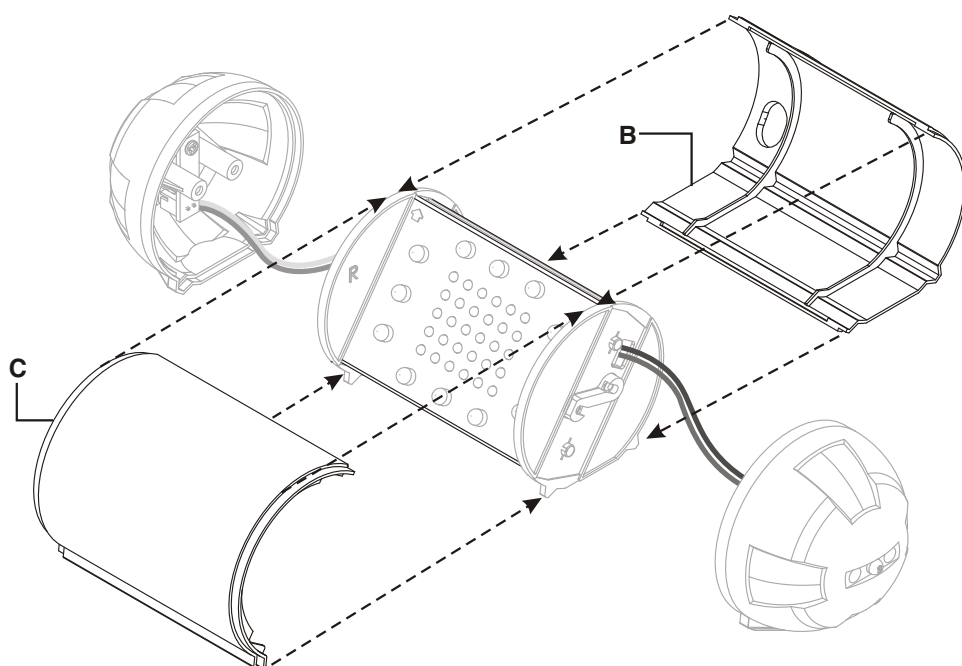
9

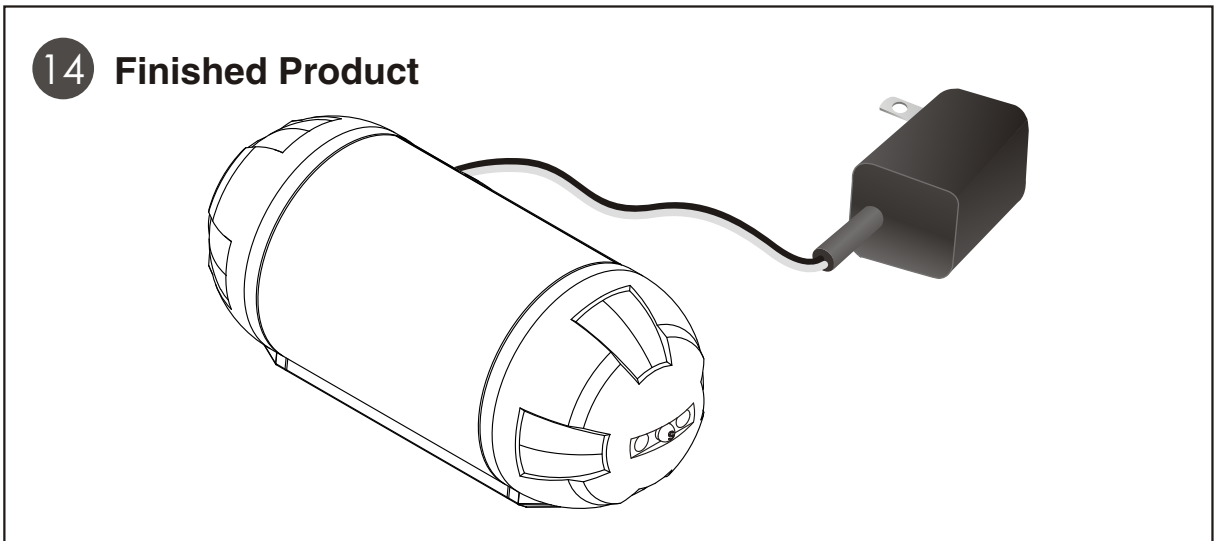
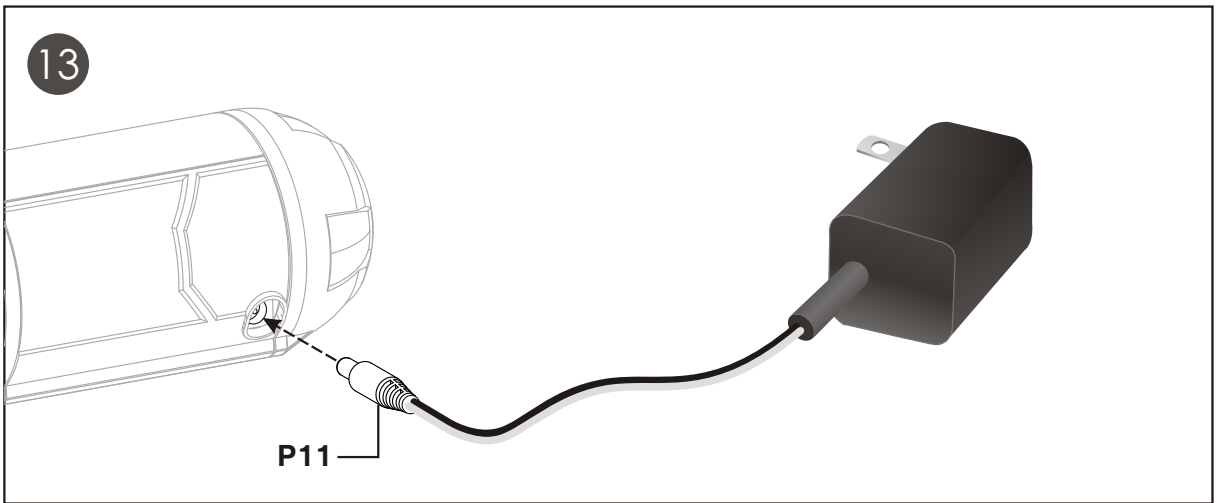
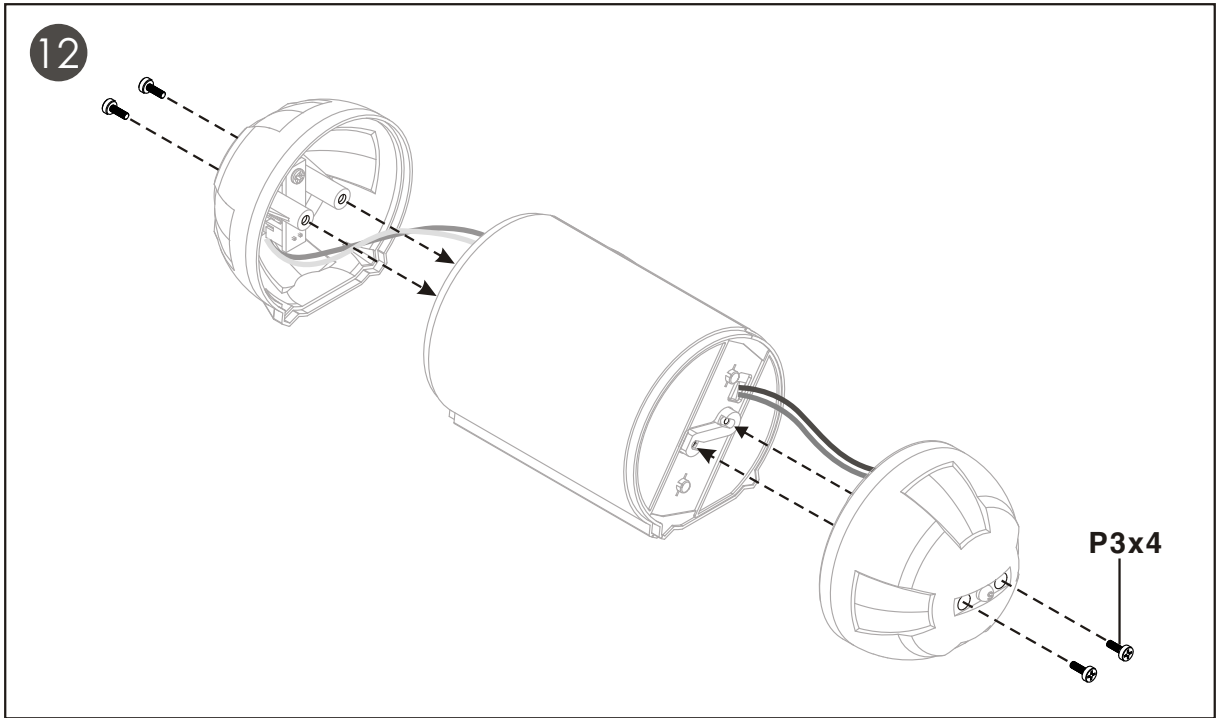


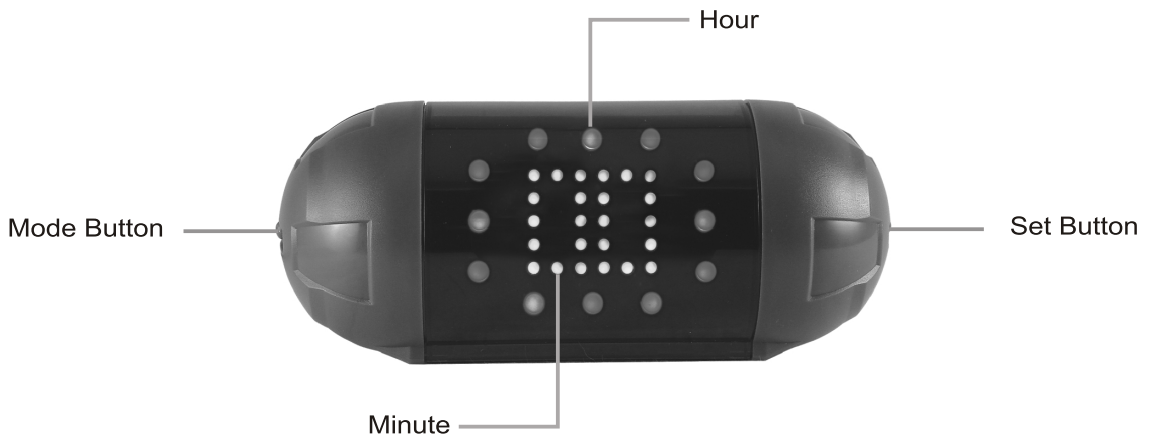
10



11







## How It Works:

- ❖ Connect the adaptor to the mains, the clock will start countdown 9.8.7....2.1.0. Later, the Hour LED will start flashing and stay at 12:00.
- ❖ Push the 'SET' button once or twice, the Minute LED will start to flash, push the 'MODE' button to adjust the minutes.
- ❖ Push the 'SET' button, the Hour LED will flash, push 'MODE' button to adjust the hours.
- ❖ Push the 'SET' button again, the clock starts to work. At this time, use 'MODE' button to select the presentations of the hour. There are 2 different hours' presentations, normal and rotating.
- ❖ There are 8 different minutes display which will show sequentially when the minutes change to the next.

## Trouble Shooting:

- ❖ Make sure the adaptor connects well on the 2 ends.
- ❖ Check if the white 'BAT' terminal connects well.
- ❖ Make sure if the wirings of the 'SET' and 'MODE' buttons are correct.

Distributed by:  
Electus Distribution Pty. Ltd.  
320 Victoria Road  
Rydalmere NSW 2116 Australia  
Phone: 1300 738 555  
Facsimile: 1300 738 500  
[www.electusdistribution.com.au](http://www.electusdistribution.com.au)  
Made in Taiwan



10-ADULT

# **WARNING**

**CHOKINGHAZARD**

Kits contain small parts  
Not for children  
under 3 years of age

