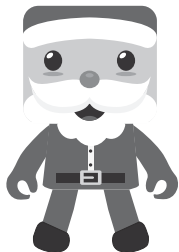
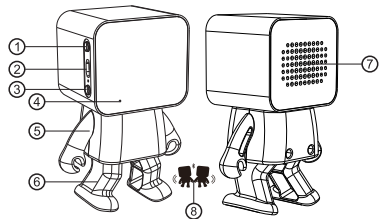


# Dancing Santa Bluetooth® Speaker

## Instruction Manual



GT4300



- 1) ON/OFF and Call Answer/End Button
- 2) USB Charge Jack
- 3) Dancing Enable/Disable Button
- 4) Microphone
- 5) Adjustable Arms
- 6) Dancing Legs
- 7) Speaker
- 8) TWS Support

### Introduction

This manual has been carefully checked, but does not rule out the possibility of a small number of text errors. If you find text errors, please feel free to contact with our customer service centre. Read these operating instructions carefully before use and use the original supplied accessories. When the dancing function is operating, do not use your hand or other means to force the device to prevent normal operation to avoid unexpected damage.

### Warning

THIS PRODUCT IS NOT A TOY AND IS NOT SUITABLE FOR CHILDREN UNDER THE AGE OF 3.

- Do not expose the speaker to water, fire, diluents or chemicals.
- Do not stop the dancing motion of the speaker by hand with force to avoid damages.
- Do not use the speaker close to magnetic fields and electricity.
- Do not use the speaker under direct sunlight or close to heating apparatus.
- Do not try to disassemble, repair or modify the speaker yourself

### Specifications

**USB charging input:** 5V 500mA

**Charging time:** 2 hours

**Speaker Specifications:** Output: 3W

**Bandwidth:** 70HZ-- 20KHZ

**Sensitivity:** 1K (85dB)

**Internal battery:** 3.7V / 250mAh capacity

**Playback time:** 2 hours

**Bluetooth version:** V5.0

**Effective transmission distance:** Up to 10 meters

**TWS Support**

### Operating Instructions

#### Bluetooth Connection

1. Press and hold the [ >|| ] button for 2 seconds & release the button when the unit turns on.

2. The speaker light will light up blue & flash to indicate it is in pairing mode. Use Bluetooth on your mobile to find the device named "GT4300".

3. Select "GT4300" to begin the pairing process. The indicator will cease flashing & the speaker will emit a "beep" tone to indicate the pairing was successful. If the connection is not successful, please turn off the speaker and start the process from step 1.

**Note:** The speaker remembers the last connected device and will automatically connect to the last connected device when powered on.

#### TWS Connection – requires two Santa speakers

1. Turn on the two speakers by pressing the on/off button.

2. Wait 30 seconds until the light blue appears and the device emits a "beep" sound. The speakers will start blinking with a light into TWS pairing state. Then the speaker will match automatically with a beep sound.

3. Follow the "Bluetooth Connection" instructions on page 4 to pair one of the speakers.

#### Play Music / Answer Calls

When the speaker is connected to the Bluetooth device, press the [ >|| ] button shortly or press the play button of the source device. The system will begin playing music. To pause the music, tap the button again.

#### Answer incoming calls

There is a call indication sound when the incoming call sounds, short press [ >|| ] button to answer the call. Press again to end the call.

#### Redial phone number

When the speaker is switched on, press the [ >|| ] key shortly twice and the system will automatically re-dial the last phone number.

#### Turn off the speaker

1. Press the [ >|| ] button for 2 seconds to turn off the speaker. The blue light will turn off after a short "beep" tone is emitted.
2. When the power is low, the speaker will automatically turn off.

#### Charging

Use the USB cable to connect to the speaker. A red light will indicate the device is charging. When the red light goes out is fully charged.

Please charge the battery in the off state to ensure the battery fully charged.

#### Troubleshooting

*Device won't turn on.*

Please charge the speaker & try again.

*Can't be charged*

Please try to change the USB charging cable

*System stops & turns off*

Fully charge the speaker, and then re-pair to your Bluetooth device.

## WARRANTY INFORMATION

Our product is guaranteed to be free from manufacturing defects for a period of 12 Months. If your product becomes defective during this period, Electus Distribution will repair, replace, or refund where a product is faulty; or not fit for intended purpose. This warranty will not cover modified product; misuse or abuse of the product contrary to user instructions or packaging label; change of mind and normal wear and tear. Our goods come with guarantees that cannot be excluded under the Australian Consumer Law. You are entitled to a replacement or refund for a major failure and for compensation for any other reasonably foreseeable loss or damage. You are also entitled to have the goods repaired or replaced if the goods fail to be of acceptable quality and failure does not amount to a major failure. To claim warranty, please contact the place of purchase. You will need to show receipt or other proof of purchase. Additional information may be required to process your claim. Any expenses relating to the return of your product to the store will normally have to be paid by you. The benefits to the customer given by this warranty are in addition to other rights and remedies of the Australian Consumer Law in relation to the goods or services to which this warranty relates.

This warranty is provided by:

Electus Distribution

Address 46 Eastern Creek Drive, Eastern Creek NSW 2766

Ph. 1300 738 555