



To all the consumers:

This is our newly launched product. With its innovation, it has been accepted and adored by many consumers in such a competitive market.

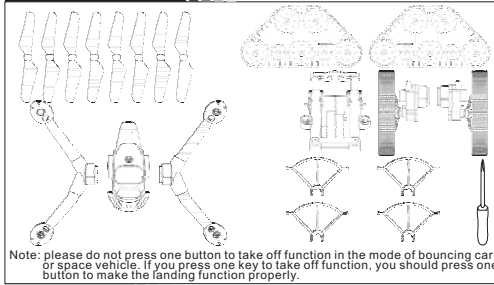
Four-axis aircraft has other names such as four-rotor aircraft, four-rotor copter, or quorodrotor, quadaxis for short.

Thank you for choosing Hehengda products! This quadrotor is able to fly outside. Please carefully read this instruction, so that you can control this copter more easily and conveniently.

Please read this instruction thoroughly and know the function of this product prior to any use of this product. Improper use of this product may cause damage to it and serious harm to your personal and property security. This model toy is a complex product. Consumers not only need to carefully operate, but also are required of operating common sense and operation basis. If not safely used, this product may be damaged and cause loss to personal and other property. This product is not intended for use by children who are not supervised by adults.



Product's all fittings list:



Note: please do not press one button to take off function in the mode of bouncing car or space vehicle. If you press one key to take off function, you should press one button to make the landing function properly.

Notes before flying:

1. Please make sure the power is adequate.
2. Please make sure that the remote joystick is reset when turn on the power.
3. Please confirm that the copter is in the same frequency. If not, please rematch the code.
4. Fly within a proper place. Stay away from crowds, cars, high-voltage towers, pools and etc, then you can enjoy a safe flight.



WARNING: All instructions and warnings must be strictly observed. Improper disposal of polymer batteries may lead to:
 1. Fire accidents, physical injuries or property loss.
 2. Do not handle charger or lithium battery by yourself, otherwise you need to take all relevant risks.
 3. At any time, if the battery starts to bulge, stop using it immediately. If a bulging battery is used during charging or discharge, it may cause a fire accident.
 4. Store the batteries in warm and dry places.
 5. During transporting, batteries need to be temporarily stored in a temperature range of 40-120 centigrade, and do not store inside models or pull it under direct sunlight. Otherwise, it may cause battery damage, even a fire accident.
 6. Do not use chargers of other types. An incompatible charger may cause a fire accident, personal injuries or property loss.
 7. Do not operate your equipment when the battery voltage is too low.
 8. Always keep it away from all chemicals. Small fittings and electrical equipment must be kept out of reach of children.
 9. Contact with water should be avoided, especially when the design of this equipment does not have waterproof function. Water vapor can cause damage to electronic products as well.

Explanations in details about the product and other functions:

Startup mode of four-axis copter: Turn on the fuselage switch and remote switch. After pulling the left joystick upward one time to match the frequency, pull it towards left and below to reset.

After resetting the four-axis copter, you need to pull the joystick in a V mode on each side. Then the copter is able to fly. (Not for the Jumping Bike and Space Mission.)

Urgent stops of inverted-V: If the copter flies too fast, you can immediately pull the two joysticks in an inverted-V mode for an urgent stop. Then the copter will stop immediately.

Rolling Mode: Once hit the rolling button, you will start the rolling mode. Pull the right joystick forward (backward, towards left, or towards right) to make the copter roll in 360 for one time.

The two rocker moves to the left side at the same time, which is the correction function.

The left joystick (pull it towards left or right) can revolve and (pull it forward and backward) take off or land the copter.

Jumping bike is controlled by the right joystick of the remote: running forward, backward, towards left or right. If pushed on light to the left or right, it will make the bike rotate in 360 at site.

Space Mission is controlled by the right joystick of the remote: turning, advancing and retreating.

Height-locating function of four-axis copter:

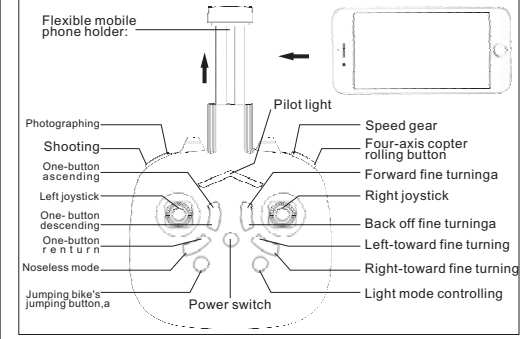
Turn on WiFi on your phone to connect with the fuselage.	Distance of WiFi: Over 60m.
Flying Distance if the flight:	100-120m.
Copter charged for 120 minutes:	10-minute flying.
Space Mission charged for 120 minutes:	About 30-minute drive.
Jumping Bike charged for 120 minutes:	About 30-minute drive.

Noseless Mode:

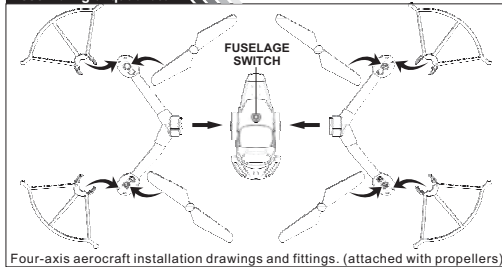
Once started noseless mode, the copter will remember the orientation of the nose when it took off. No matter which direction the nose turns, only the direction in accordance with the starting orientation is the nose. This means that the starting orientation rather than the nose you are looking at is the one identified by remote. If you want to cancel the noseless mode, hit the noseless button once more time.

One-button return:

One key return: The aircraft receives the automatic return command or loses the control signal after completing the assigned task, through its own visual system or GPS records, automatically return function according to the take-off direction.

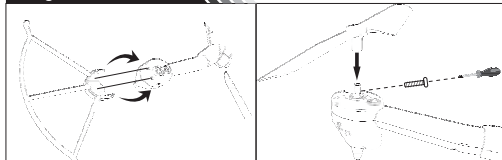


Assembling of quadrotor:



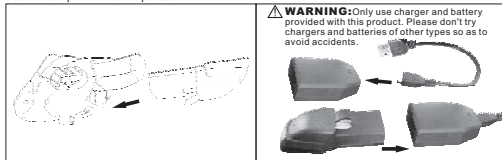
Four-axis aircraft installation drawings and fittings. (attached with propellers)

Fittings installation details:



Install copter bumper frame
The two convex grooves on the inner side of bumper frames are aimed at the two apertures on the quadrotor's pedestal, and the install them in. Fasten it hole to hole. And fasten the convex grooves on the two sides of bumper frame to the pedestal.

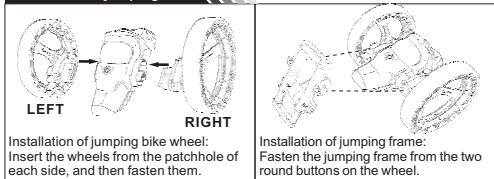
Installation of the propeller:
Insert the propeller into the axle center, and fasten with screws.



Installation of the fuselage rechargeable batteries: Insert the charged batteries under the fuselage.

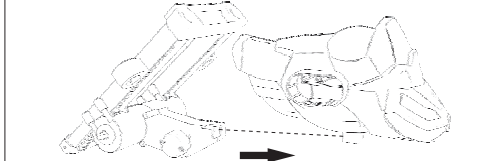
Charge the batteries after the charger and data wire being plugged in.

Installation of jumping bike:



Installation of jumping bike wheel: Insert the wheels from the patchhole of each side, and then fasten them.

Installation of jumping frame: Fasten the jumping frame from the two round buttons on the wheel.



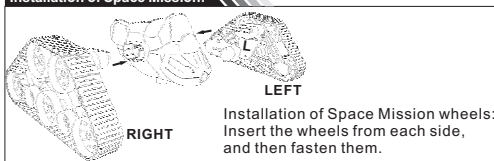
The power outlet under fuselage should be inserted when aiming at the socket on fuselage.



Jumping button on jumping bike:

1. The spring on the jumping frame will shrink first.
2. The spring will launch after shrinking.

Installation of Space Mission:



Installation of Space Mission wheels: Insert the wheels from each side, and then fasten them.



HHD H3
Ari Land Jump • INSTRUCTIONS



THREE IN ONE