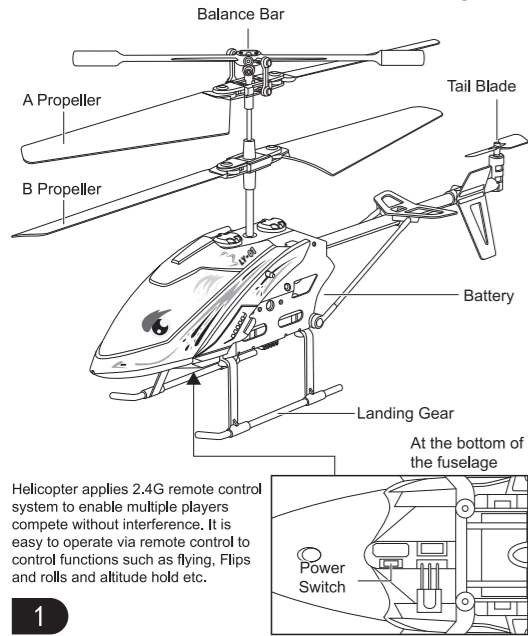


2.4G 3.5CH RC Helicopter Takeoff In Altitude Hold And Landing Version

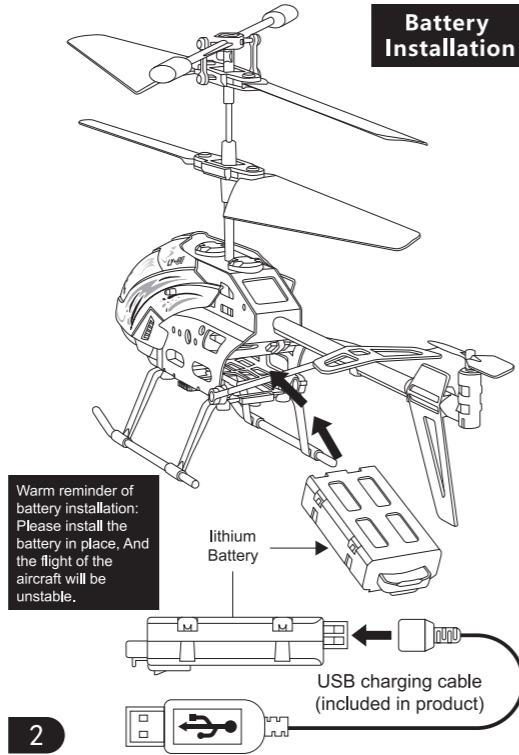
Instruction Manual

Ages 14+



1

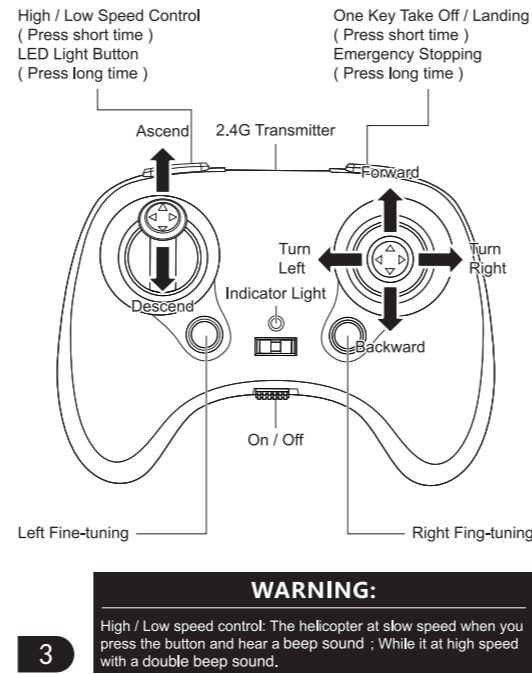
Battery Installation



2

Know Your Remote Control

Operation board of remote control

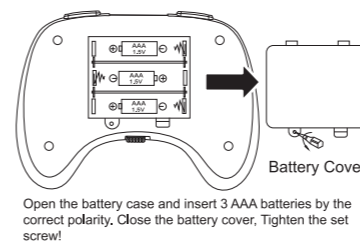


3

WARNING:

High / Low speed control: The helicopter at slow speed when you press the button and hear a beep sound ; While it at high speed with a double beep sound.

Install The Remote Batteries



Open the battery case and insert 3 AAA batteries by the correct polarity. Close the battery cover, Tighten the set screw!

Notes:

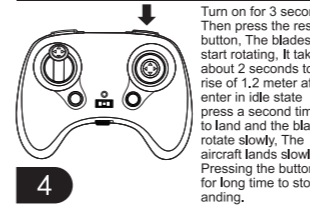
1. Ensure the polarity symbols on the batteries match the symbols inside the battery compartment.
2. Do not mix new and old batteries.
3. Do not mix different types of batteries.
4. When the remote control's indicator light flashes, Which indicates the remote control has low voltage. Please replace with new batteries.

Pre-takeoff Instructions

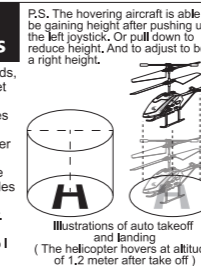
After the charging completes, Put the helicopter on level surface and turn the power switch to the "ON" position when the helicopter's LED light flashes. Power on the remote control to proceed pairing that the remote control's LED light turns from flashing to solid indicates. The process of pairing has been successful and the helicopter is ready for other operations.(Theprocess of pairing takes about 3 seconds.)



Takeoff In Altitude Hold And Landing Instructions



4



APP Operating instructions

1. Install mobile client

Please scan the following QR codes for IOS or Android. Alternatively you can type in " KY FPV" in the App Store or Google Play Store



2.Add device

Power the device, manually connect WIFI hotspot to "KY*****", no password.



Figure 1

Figure 2

3.Head interface

SETTING, FAQ, START, Figure 1.

4.Operation mode

Play the interface and the functions of each button, as shown in Figure 2.

5.Music recording:

click the icon to enter the music library and select background music, and then click use to return to the control interface, where there is background music.

6.Manual focusing:

press and hold the track ball on the left most side of the control interface, and slide to adjust the image focal length (1x-50x digital magnification).

1X:

turn off focus adjustment, and the image is the default size. 50X: 50 times the maximum focal length.

2:

In the process of recording, you can manually adjust the focal length by sliding this key up and down.

7.Special effects

Filterspecial effects: on the control interface, click icon to enter the filter control interface.

Click

again to display various filter options. After selecting the filter, click icon to exit the filter option.

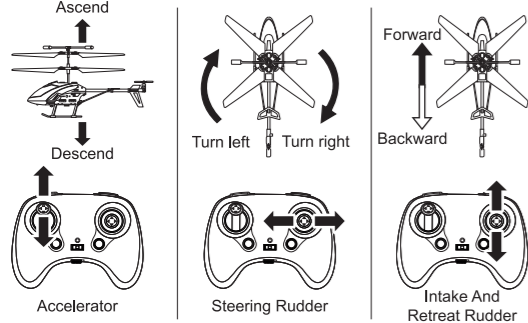
Click

to exit the filter and return to the main control interface.

Note: only one mobile app is allowed to connect to an aircraft at the same time!

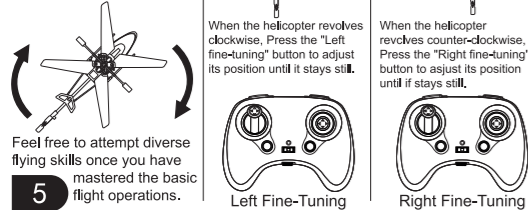
Helicopter Operations

Press the one-key start button to control the helicopter to ascend to the altitude of 1.2 meter and hover stably. In other operations to control the helicopter to turn left and right, Ascend, Descend, Forward and backward.



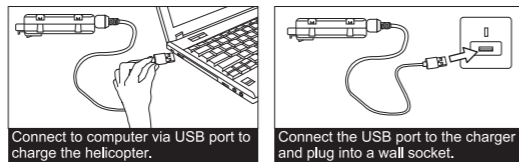
Trimming Helicopter

Press "One-key start" button to control the helicopter to ascend to the altitude of 1.2 meter and hover stably.



5

Battery Charging For Drone



- Notes:
1. Turn the power switch to the "OFF" position before charging.
 2. Connect the USB jack on the bottom of the fuselage to the charging cable, And use a charger or computer to connect the charging current to less than 2A.
 3. The USB's indicator light turns solid when it start to charge and turns off when the charging completes. It has a charging time of 50 minutes and gives a flying time of 7 minutes.
 4. The helicopter's bottom LED light turns up when the helicopter battery is low.
 5. Please use original charger for battery charging. Chargers from others might cause damage to the battery.

▲ Battery Instructions

- There is a certain risk when using lithium battery. It may cause fire. Body injury or property loss users must be aware of the risks and take full responsibility of using battery improperly.
- If battery leakage occurs, Please avoid contacting your eyes or skin with electrolyte once it happens. Please wash your eyes with clean water and seek medical care immediately.
- Please remove the plug immediately if you sense any peculiar smell, Noise or smog.
- Install the battery in place when replacing the battery to make the aircraft more stable. Failure to do so will cause the aircraft to advance automatically.

▲ Charging Matters Needing Attention

- Please use the charger from original factory to ensure your safe usage.
- Do not charge deformed/ worn out battery.
- Do not over charge battery please unplug the charger once fully charged.
- Do not charge the battery next to inflammables, Such as carpet, Timber floor or wood furniture or on the surface of electro-conductive objects.
- Please always keep an eye on the battery when charging.
- Do not charge battery which not cool down yet the charging temperature should be between 0°C to 40°C.

6

WARNING

1. Please keep flying helicopter away from crowd. The incorrect installation, Improper operation and electronic equipment malfunction will cause the damage or injury.
2. Fly in correct according to the instruction strictly.
3. Eachine shall not be held responsibility for any issue caused by improper operation or using.
4. Recommendations for above 14 years old. Close supervision is required when using this equipment under the age of 14.

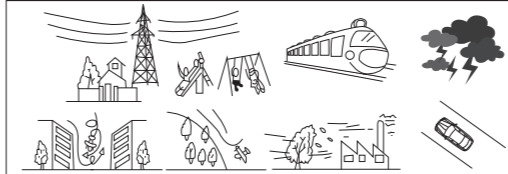
Precautions

1. If the battery voltage is low, either the helicopter or the remote control, Please control the helicopter in a comparatively short range.
2. Please operate the helicopter within a range of 30-40 meters otherwise it might cause control loss.
3. If the helicopter's battery is low the helicopter might fail to take off please immediately stop the operation and turn off the power to avoid damage to the battery. If you will suspend the device for some time please take the battery out of the device and turn the power switch to the "OFF" position.
4. Please immediately repair any damage or deformation once found if severe damage has been caused, Such as rotor breakage, Please do not fly the helicopter to avoid body injury.
5. Please remove the battery from the remote control if you will suspend the remote control for a long time in case of battery leakage or other damage to the product.
6. Please operate the helicopter correctly and appropriately to avoid accidents such as crash or collision, Which might minimize the product's lifespan.
7. The helicopter applies 2.4G remote control system. Please ensure the battery has been fully charged before flight, And do not fly it at low battery state otherwise it might lose control.
8. Please keep all the components in moisture-free places as this might lead to operation failure.
9. Please thoroughly inspect the helicopter and all parts of components each time before flight to ensure flight safety.
10. Please power on the remote control before flight and power it off after flight at all times.

7

Battery Recycling Do not dispose the battery in daily rubbish. Please familiarize yourself with the local garbage disposal method and disposal it according to the special requirement.

Don't Fly Helicopter At The Place With These Signs



Notes:

1. Do not store the helicopter & controller in an environment where it is exposed to moisture, Dust, Direct sunlight or extremely high or low temperatures.
2. Use only the charger that is made for use with this model helicopter.
3. Make a complete inspection before flying the helicopter. Do not let the helicopter fly out of sight when flying.
4. Make sure that there is nobody using the same frequency as you at the same time in the room.

FAQ

Problems	Causes	Solutions
Remote controller does not work	Batteries installed improperly	Check and make sure that the batteries are installed by the right polarity
	The batteries are weak	Replace with new or freshly charged batteries
Helicopter does not operate smoothly	Failure to match code from remote controller	Turn off the helicopter and match code again
	Lose control in the wind	Do not fly the helicopter in significant winds
Helicopter does not fly high enough	Rotor speed is too low	Push up the left throttle
	Helicopter is not fully charged	Make sure the helicopter battery is fully charged

8

Distributed by:
Electus Distribution Pty Ltd
46 Eastern Creek Dr,
Eastern Creek NSW 2766
Australia
Ph 1300 738 555
Int'l +61 2 8832 3200
Fax 1300 738 500
www.electusdistribution.com.au