

Mini Boomerang Spinner Drone

Ages
14+

Note to Adults: to ensure that the child's play is both safe and fun, please review all operating instructions and safety tips in the CONSUMER INFORMATION section with your child.

CAUTION: BUILT-IN BATTERY SAFETY INFORMATION

- The Drone includes a non-replaceable battery. Do not open, disassemble or alter the Drone in anyway.
- Built-in USB adapter is permanently attached to the Drone. To protect your Drone, only connect to USB certified port.
- Adult supervision is required when charging the
- Charge battery in isolated area. Keep away from flammable materials.
- Do not expose to direct sunlight.
- Do not recharge the toy if it is hot. Allow it to cool before recharge.
- Do not drop or subject to strong impacts.
- Do not allow the batteries to get wet.
- Carefully read the instruction guide and use the batteries correctly.
- In the unlikely event of leakage or explosion use sand or a chemical fire extinguisher for the battery.
- Rechargeable batteries are only to be charged under adult supervision.
- Routine examination for damage to the plug, enclosure and other parts. In the event of any damage, the toy must not be used with USB port until the damage has been repaired.

CLEANING INSTRUCTION

To clean, wipe excess dirt from toy. Wipe toy clean with damp cloth. Wipe dry. DO NOT IMMERSE IN WATER and DO NOT CLEAN DRONE WITH ANY CHEMICALS. Let the toy completely dry before playing.

INSTRUCTION FOR DISPOSAL OF WASTE

- Your batteries and electronic toys should be recycled or disposed per your local waste management guidelines.
- Contact your local waste management officials for information regarding the environmentally sound recycling and disposal of batteries and electronic toys.

QUICK TIPS

- When the aircraft is on standby for 3 minutes, it will shut down automatically. When it is used again, it must call ON to OFF and open it again before it can be used.
- When the LED light flickers slowly or cannot fly when Drone flies, please switch the aircraft to OFF and charge it before using it.



USER MANUAL

PACKAGE CONTAINS:



Drone x1

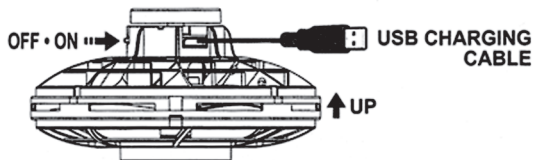


USB Charging cord x1

WARNING:

1. KEEP YOUR BOOMERANG UFO AWAY FROM FACE AND EYES.
2. DO NOT TOUCH THE BODY OF THE DRONE WHILE SPINNING TO AVOID INJURY.

Distributed by:
Electus Distribution Pty Ltd
46 Eastern Creek Dr,
Eastern Creek NSW 2766 Australia
Ph 1300 738 555
Int'l +61 2 8832 3200
Fax 1300 738 500
www.electusdistribution.com.au



CHARGING THE DRONE

1. Ensure that the Drone startup switch is turned off to OFF, and then plug the USB charging wire into the charging socket inside to charge.
2. The Drone charging line can be connected to the following USB devices for charging.

Warning: Please use the charging line attached to the product! Do not use other USB charging devices.



3. The red LED of the aircraft will turn on when it is charged and turn off when it is fully charged. Note: If the red LED lights are turned off, the charging is completed or the USB plug is not connected properly.
4. The average charging time of Drone is about 30 minutes, and the flight time is 7-10 minutes.

WARNING

DO NOT FLY YOUR BOOMERANG DRONE IN FOUL WEATHER!



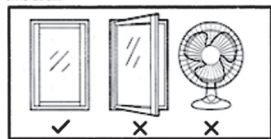
PREPARING FOR FLIGHT

- Verify that boomerang Drone has been fully charged.
- Make sure the empty space has no obstacles or rivers.

DO NOT ATTEMPT TO FLY YOUR BOOMERANG DRONE IF THERE IS RAIN, SNOW, HEAVY WINDS, THUNDER OR LIGHTNING OUTDOORS. IT COULD DAMAGE YOUR PRODUCT AND POSSIBLY EVEN CAUSE BODILY HARM.

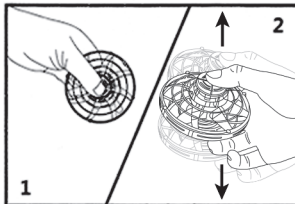
LETS GET STARTED!

Follow these simple steps in EXACT ORDER and you will be successfully flying your boomerang Drone in no time at all!



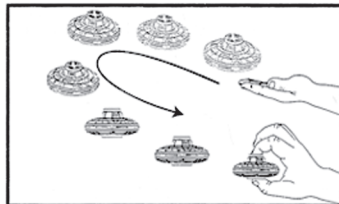
Make sure all sources of wind like ceiling fans, floor fans and opened windows are turned off and closed. Central air conditioning should be okay but it is a good idea to stay away from strong drafty areas.

HOW TO PLAY:



The forefinger and thumb grab the round covers on the top and bottom of the aircraft, turn on the power switch, and when the LED flashes normally, quickly swing the aircraft up and down with your wrist, and the aircraft will start to operate.

Note: Make sure the top of the aircraft is up!



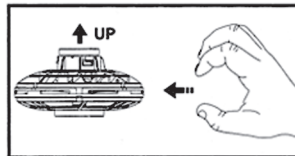
Different flying trajectories will be realized if the angle of throwing aircraft is different.
* When thrown horizontally, the aircraft will move out horizontally.

* When tilting the aircraft backwards (toward the operator) Members themselves, the aircraft will fly a distance later. Rotate in the direction of the operator.

* When the aircraft tilts forward (operator) In the front, the aircraft will fly one ahead. Section distance, this way can realize two-person interactive play.

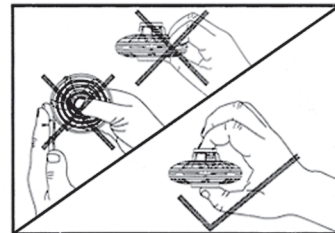
* When the aircraft returns, the beginner can grasp the aircraft with the whole palm and adjust the correct position before proceeding to the next operation.

Note: The bigger the angle of inclination when the aircraft is thrown, the faster the flight speed of the aircraft will be.



When Drone flies parallel, it will not fly back automatically.

Skills Tip: After successful operation of the aircraft, you can develop other skills to play.



Important hint: The index finger and thumb must grasp the top and bottom caps of the flying finger gyroscope to stop its rotation.

Warranty Information

Our product is guaranteed to be free from manufacturing defects for a period of 12 Months.

If your product becomes defective during this period, Electus Distribution will repair, replace, or refund where a product is faulty; or not fit for intended purpose.

This warranty will not cover modified product; misuse or abuse of the product contrary to user instructions or packaging label; change of mind and normal wear and tear.

Our goods come with guarantees that cannot be excluded under the Australian Consumer Law. You are entitled to a replacement or refund for a major failure and for compensation for any other reasonably foreseeable loss or damage. You are also entitled to have the goods repaired or replaced if the goods fail to be of acceptable quality and failure does not amount to a major failure.

To claim warranty, please contact the place of purchase. You will need to show receipt or other proof of purchase. Additional information may be required to process your claim.

Any expenses relating to the return of your product to the store will normally have to be paid by you.

The benefits to the customer given by this warranty are in addition to other rights and remedies of the Australian Consumer Law in relation to the goods or services to which this warranty relates.

This warranty is provided by:

Electus Distribution

Address 46 Eastern Creek Drive, Eastern Creek NSW 2766

Ph. 1300 738 555