



HEAVY DUTY SOFT COOLER



GH1970
GH1972

INSTRUCTION MANUAL

When the weekend is here, grab your Brass Monkey Soft Cooler and load it with ice and you are ready for an adventure! The tough build suits longer hauls and longer expeditions. Its durable, leakproof and versatile with the Tie-Grid for tools and accessories on the front. The internal Insulation is a closed-cell rubber foam that offers cold-holding out of this world that other ordinary soft coolers simply cannot match. The Rubber Shell high-density fabric is waterproof and resistant to mildew, punctures, and UV rays! The liner is made from food-grade materials and will hold its own when faced with the harsh Australian wild! The cubed body makes it easy to haul and store while the super tough zipper and wide-mouth opening mean great accessibility and visibility to contents!

Please read this instruction manual carefully before using the soft cooler. Keep the instruction manual in a safe place for future reference.

COOLER PERFORMANCE GUIDELINES:

- To achieve maximum performance in your new cooler you must use it properly. Use plenty of ice and pre-chill the cooler and its contents before placing them in the cooler.
- Put the ice in the cooler. Remember, cold air travels down, so if you want your beverages well chilled, load cans and bottles first, then cover with ice.
- Choose cube or block ice. Use cube ice to quickly cool food and drinks, block ice to keep it cold longer.
- More ice is better. We recommend filling your cooler with as much ice as possible. We suggest an ice-to-contents ratio of 2:1. Fill void space.
- Keep cooler out of the sun. Ice lasts up to twice as long when the cooler is in the shade.
- Close lid quickly after opening. Do not leave the lid open longer than necessary.
- Don't drain the cold water, because it will be replaced by warm air which will melt the remaining ice faster. Recently melted ice keeps food and drinks cold. Melted ice water preserves ice better than empty air space.
- Fully filled with ice cubes, the ice retention time can reach more than 4 days (based on 25°C room temperature). It's for reference only, the actual ice retention time depends on the actual situation.
- Due to its durable materials, the soft cooler may be rigid when first put into action, zipping will become easier as the materials relax with use.

COOLER PERFORMANCE GUIDELINES:

Pro Tip: use rock salt

If you are looking to super-chill your beverages, here is a pro tip that can make the difference: Rock Salt. This will produce some of the coldest drinks you have ever had, and in a relatively short period of time.

Here is how to do it:

- 1.** Properly fill your cooler with beer and plenty of ice;
- 2.** Generously sprinkle rock salt on top of ice and close the lid;
- 3.** Wait 30 minutes, then enjoy frigid awesomeness.

Heat Retention

The cooler preserves heat as well as cold. You can use it to keep food warm.

Note: Do not place high-temperature objects to avoid unpleasant odor due to volatilization of plastic.

Avoid using dry ice

Dry ice is the solid form of Carbon Dioxide and its -109°F / -78°C temperature makes it a very attractive cooling alternative, but we still recommend against it and here is why.

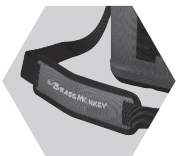
As dry ice warms up, it becomes CO₂ gas instead of melting. The cooler is so airtight that they will inflate with this CO₂ gas until they expand, which threatens the integrity of your cooler.

Additional Tips

- Keep the cooler away from open fire.
- Do not keep your cooler in water for a long time.
- Your cooler may fade over time as its exposed to the UV rays of the sun. This is a normal part of the wearing process and will not affect performance.
- Keep your cooler away from chemicals, acids and strong alkali.
- Do not microwave.
- Do not wash in dish washer.
- Do not use boiling water to clean.

PRODUCT OVERVIEW & FEATURES

The Brass Monkey soft cooler has a dual TPU structure with high frequency welding (polyester shell+ insulation layer, NBR cotton+ polyether inner liner), thick insulation layer and waterproof zipper, providing excellent thermal insulation performance and ice retention ability.



Adjustable shoulder strap

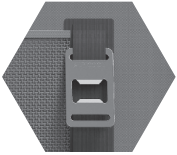
The length of the shoulder strap is adjustable. The comfortable and wear-resistant shoulder strap has a strong load-bearing ability, with a maximum capacity of 50 kg (sand).

PRODUCT OVERVIEW & FEATURES



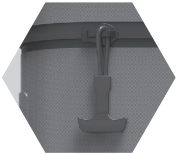
Detachable shoulder strap buckle

This handy, detachable shoulder strap buckle allows you to easily remove the shoulder strap, which is more convenient and meets any of your carrying needs.



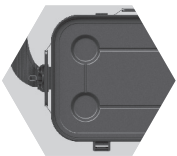
Portable bottle opener

Pop some tops on the fly. This bottle opener fits snugly onto your cooler and is made with corrosion-resistant stainless steel so it won't rust or bust.



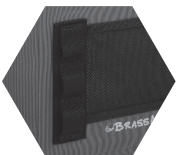
High airtight & waterproof zipper

Borrowed from survival suits and high-performance fishing waders to make the ultimate waterproof, airtight closure.



Molded cup holders

Molded cup holders design on the lid top, keeping your drinks close.



MOLLE system and mesh pocket

Easily attach pretty much anything to your journey, like bottle openers, carabiners, etc.



Reinforced handles

Different from the traditional webbing, adopts plastic reinforced handles, which is stronger and more comfortable. It is suggested to pass the shoulder strap through the handles on both sides to prevent the soft cooler from turning over when it is lifted directly with the shoulder strap.

CLEANING & STORAGE:

Cleaning:

- Clean the inside and outside. Clean the inside with a solution of mild soap and warm water, especially before first use.
- Always clean after use, especially if used in salt water environment.
- To remove tough stains, use baking soda and water to clean the inside. Hand wash only.
- Always air dry the cooler with the lid open before storing. This reduces the risk of mold and mildew growth.

Storage:

- It is recommended that you leave the zipper in the closed position with the slider pulled fully, which will help protect the waterproof seal and the zipper closure.
- Remove odors with a tea bag or activated carbon bag in the cooler.
- Apply the lubricant to the inside and outside of the zipper regularly, which can extend the service life of the zipper.

TECHNICAL DATA:

Model No:	GH1970	GH1972
Capacity:	15L	25L
Dimensions: (L x W x H)	451.5 x 287 x 295mm	451.5 x 287 x 440mm
Gross Weight:	1.95kg	2.45kg
Net Weight:	2.7kg	3.3kg
Shell:	TPU	
Cold Cell:	TPU	
Insulation:	NBR Foam	
Seal:	TPU nylon waterproof zipper	
Insulation Time:	68 hours	
Number of Cans*:	23	45

*The number of cans above speaks to full loading of 330 ml/ 11 oz. cans, and varies based on type of ice used.

Due to product improvement, the technical information might be different from actual information, please refer to the rating label on the product.

DISPOSAL:

If you wish to finally dispose of the product, ask your local recycling center or specialist dealer for details about how to do this in accordance with the applicable disposal regulations.

Distributed by:
Electus Distribution Pty. Ltd.
320 Victoria Rd, Rydalmere
NSW 2116 Australia

www.electusdistribution.com.au

Made in China