

**Wireless HDMI Display Receiver  
User's Manual  
AR1914**



# Contents

<b>1. Package Contents</b>	<b>3</b>
<b>2. Before you start</b>	<b>4</b>
<b>3. Quick Start</b>	<b>7</b>
<b>4. Using MirrorOp Sender for win-OS</b>	<b>9</b>
<b>5. Using MirrorOp Sender for MAC-OS (Optional for User)</b>	<b>19</b>
<b>6. Web Management</b>	<b>27</b>
<b>7. Using DLNA Function via Wireless HDMI Display Receiver</b>	<b>33</b>
<b>8. System requirements</b>	<b>38</b>

# 1. Package Contents:

Please check the following items are included in your **Wireless HDMI Display Receiver** package:

- Main Unit X1
- Antennas X2
- 5V/2A Power Adapter X1
- Installation CD X1
- User's Manual (In the CD) X1



## 2. Before you start

**Wireless HDMI Display Receiver** is the one device that can show all contents of your Windows® or Mac® computers on your TV wirelessly. You can easily control computers with your mouse and/or keyboard. You can share any content from your computers with your friends and family in your living room.

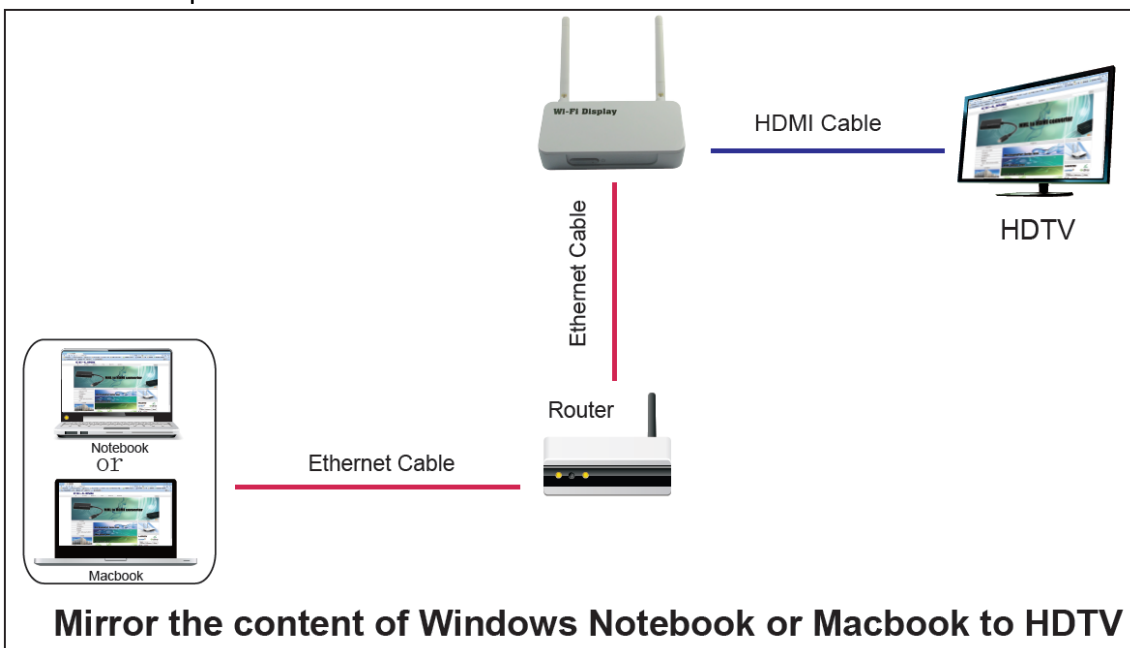
Also, if your mobile phone or pad is Android OS with a built-in DLNA function, you can push the picture, music and audio from Android mobile devices to HDTV for sharing a big screen.

Also, if your home Router has no Wi-Fi function, connecting this product to your home Router, you will get a Wi-Fi Router, then all mobile network devices can also access into the Internet, such as personal notebook, mobile phone, etc.

### Setup Possibilities:

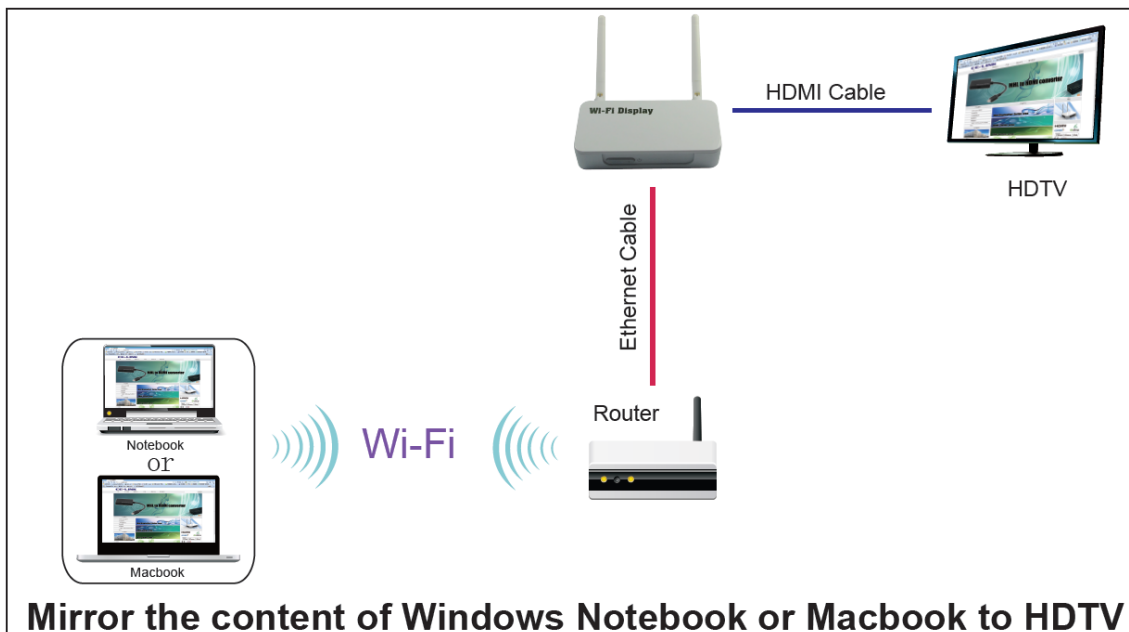
#### a) Ethernet Connection: Best performance for Windows or Mac computer

Whenever possible, always use Ethernet cables to connect **Wireless HDMI Display Receiver** device to your home network. This setup provides best performance for both remote operation and internet connection.

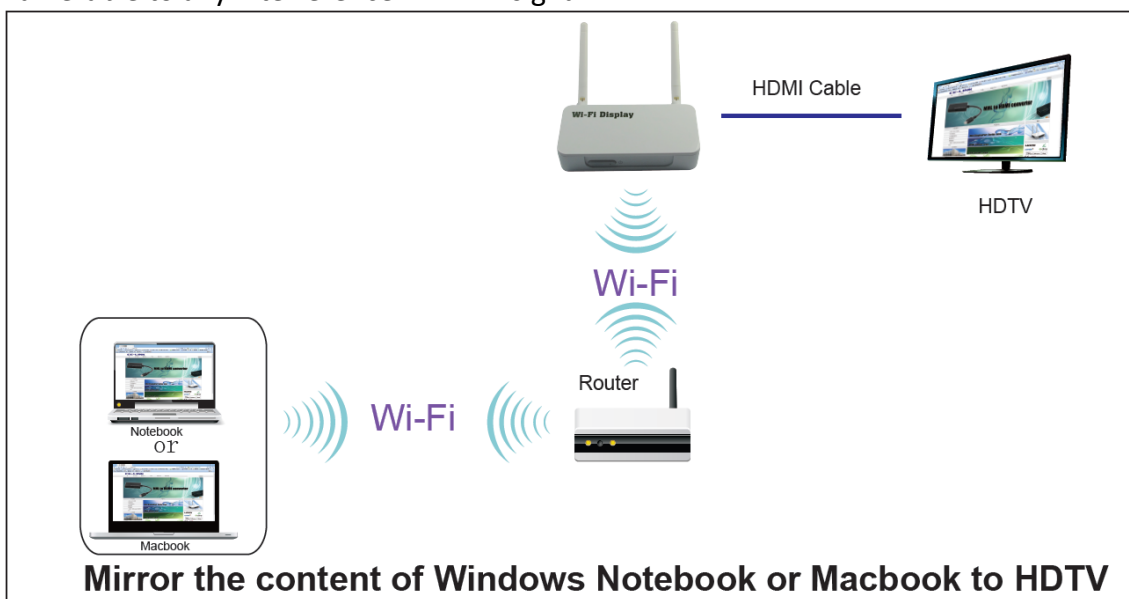


#### b) Partly wireless Connection: Reasonable Performance for Windows or Mac computer

If wireless connection is preferred, you can connect your home AP and **Wireless HDMI Display Receiver** via cables, and access either from your home AP or **Wireless HDMI Display Receiver**.

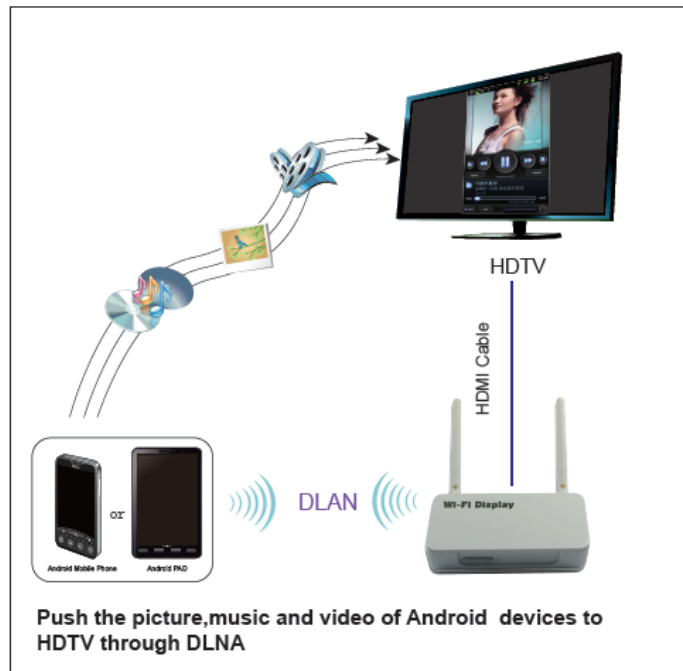


**c) Purely wireless Connection: Basic performance for Windows or Mac computer**  
You can also try setting up **Wireless HDMI Display Receiver** as a wireless client to your home AP via AP-Client mode. However, this setup is more complicated and vulnerable to any interference in Wi-Fi signal.



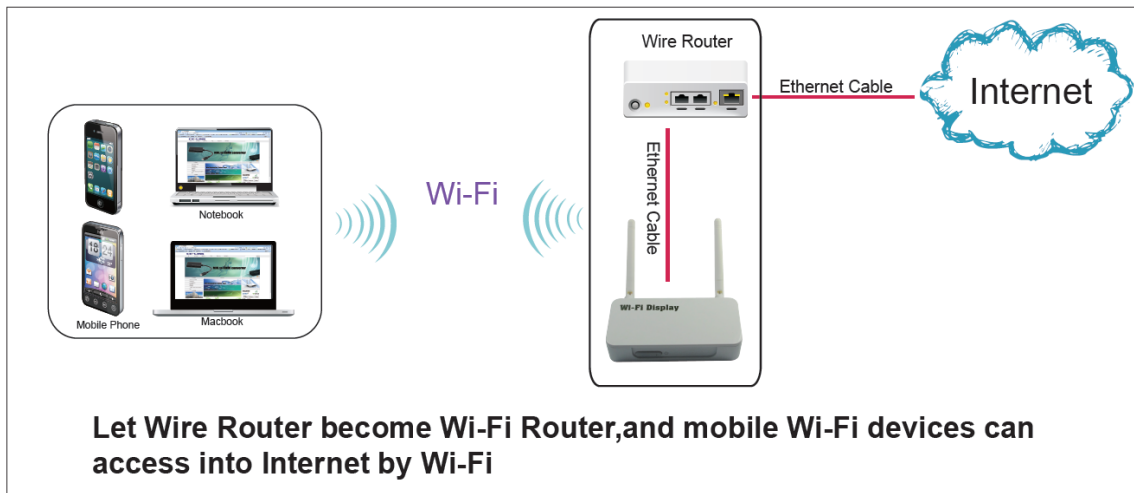
**d) DLNA function for Android mobile devices**

if your mobile phone or pad is Android OS with a built-in DLNA function, you can push the picture, music and audio from Android mobile devices to HDTV for sharing a big screen. For some mobile devices, maybe some media format can not be supported on this product.



**e) Wi-Fi Router Function**

Let Wire Router become Wi-Fi Router and mobile Wi-Fi devices can access into Internet by Wi-Fi, such as personal notebook, mobile phone, etc.



### 3. Quick Start

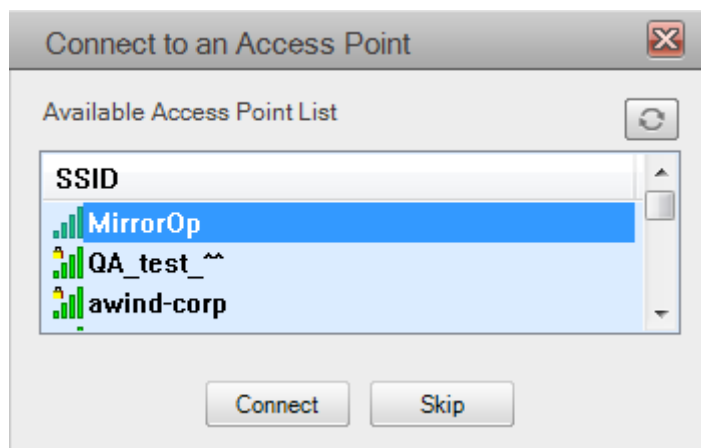
1. Connect the HDMI output on the **Wireless HDMI Display Receiver** to your TV, and turn on your TV.
2. Connect the power adapter to your **Wireless HDMI Display Receiver**, and plug in to your power outlet.
3. Press the Power button on **Wireless HDMI Display Receiver** to turn on the device.
4. **Wireless HDMI Display Receiver** will be powered ON. Waiting for about 35 seconds, the Main Menu as below will be shown on your TV screen while system is ready.



5. Insert **Wireless HDMI Display Receiver** CD and follow on-screen instructions to install software from the CD-ROM.
6. Find the following icon in "Applications\MirrorOp" folder (on Mac) or "Programs\MirrorOp Sender" folder (on Windows) to launch **MirrorOp Sender**.



7. Search Wi-Fi Access Point. Select your **Wireless HDMI Display Receiver** device (default SSID is MirrorOp) from the list and click the Connect button.



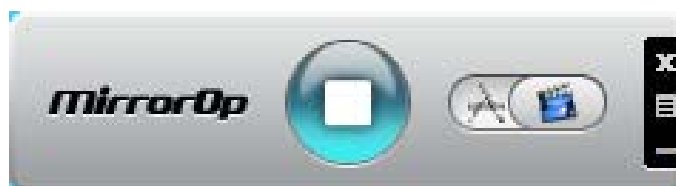
8. Connect to selected access point.
9. Connect to **MirrorOp** server. If only one server is found, it will automatically connect to the server.



10. The application will ask to adjust your PC resolution for best projection result, and then project your screen to TV. You should see your PC Desktop on TV screen now.



11. To finish projection, click the X button on the menu of **MirrorOp Sender** to leave projection. Your screen resolution would be restored to original one if you approve adjusting resolution with above step.





## 4. Using MirrorOp Sender for Win-OS

### 4.1 Start Program

After installing the program, you will see the MirrorOp icon on your desktop:

- 1) Double click it to execute MirrorOp Sender client.

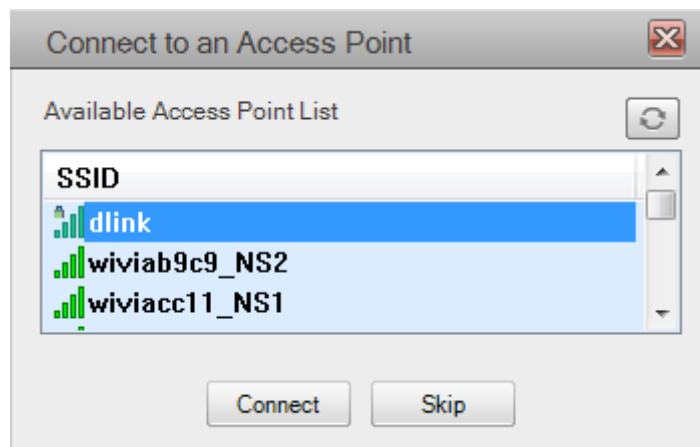


- 2) Program start to list all available Access Point List.(Auto Wi-Fi connect enabled)
- 3) Program start to search all available MirrorOP devices.
- 4) After MirrorOP device is found, click it to start projection.

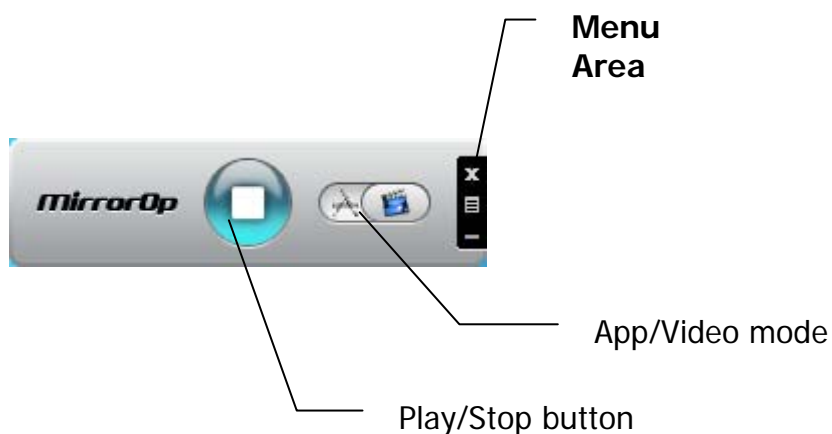
- **Search for device**



- **While Auto Wi-Fi connect is enabled, list all available access point list**




## 4.2 Main User interface



## 4.3 Screen Projection



Click the  button for full or split screen; you can project the main screen on to the display immediately.

### Video Mode vs. App Mode




On **MirrorOp Sender** you can find a switch button for two modes:

**Video Mode** and **App Mode**; **Video Mode** is designed for smooth video experiences, so by default it has longer latency between your PC and TV.



If you have very good network connection (by Ethernet) and prefer to use low latency mode at all times, you may drag the switch to **App Mode**.



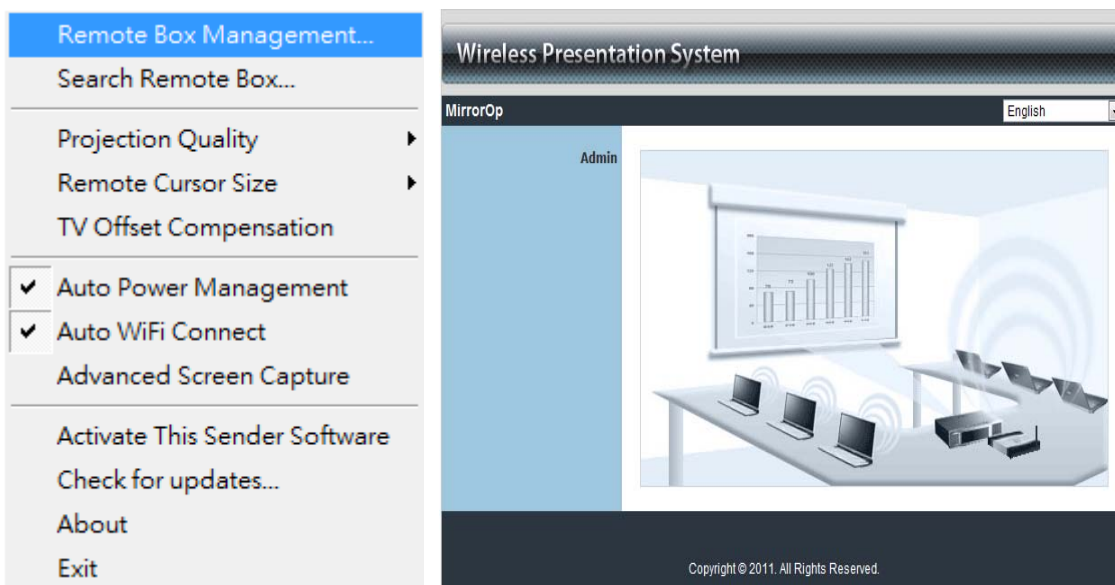
button	Description
	Full Screen Projection
	Video Projection
	Application Projection

## 4.4 Menu Description



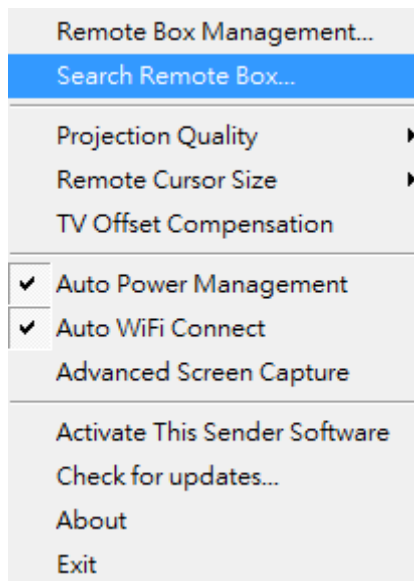
### 4.4.1 Remote Box Management

Click <**Remote Box Management**> to initial web management.

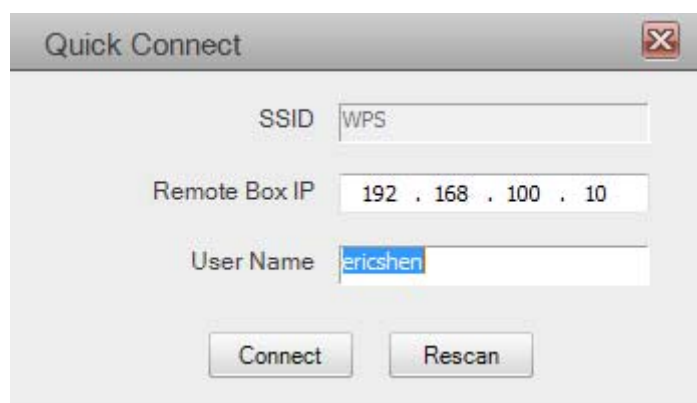


### 4.4.2 Search Remote Box

Click <**Search Remote Box**> to connect to another **MirrorOp**.

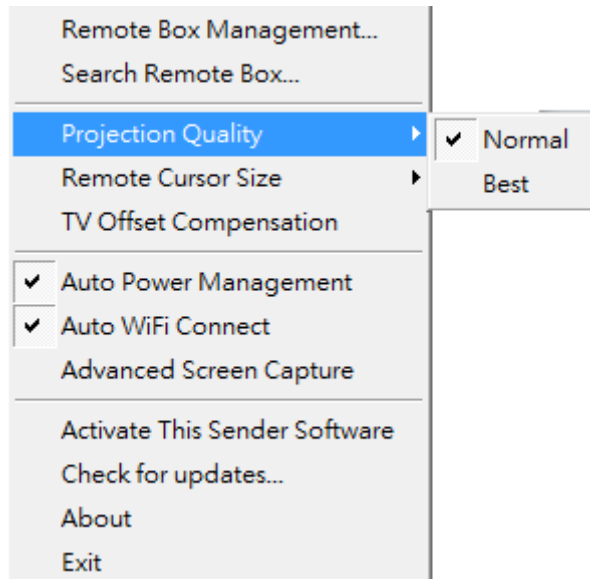


The last **MirrorOp** you connected is remembered. To connect another one, please click **<Rescan>**.



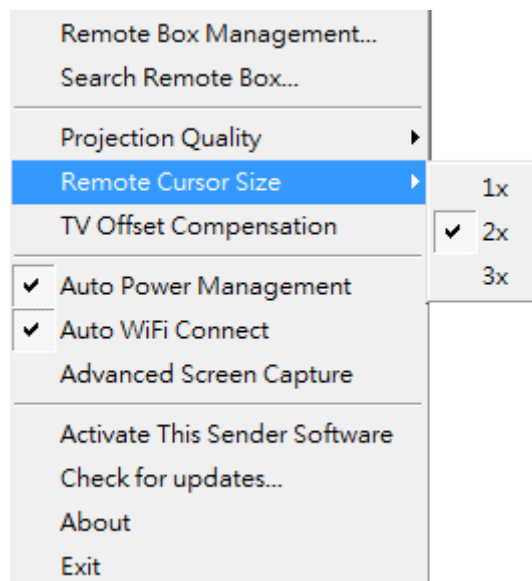
### 4.4.3 Projection Quality

Adjust projection image quality in **<Projection Quality>**. Higher quality requires higher bandwidth. Default is Normal.



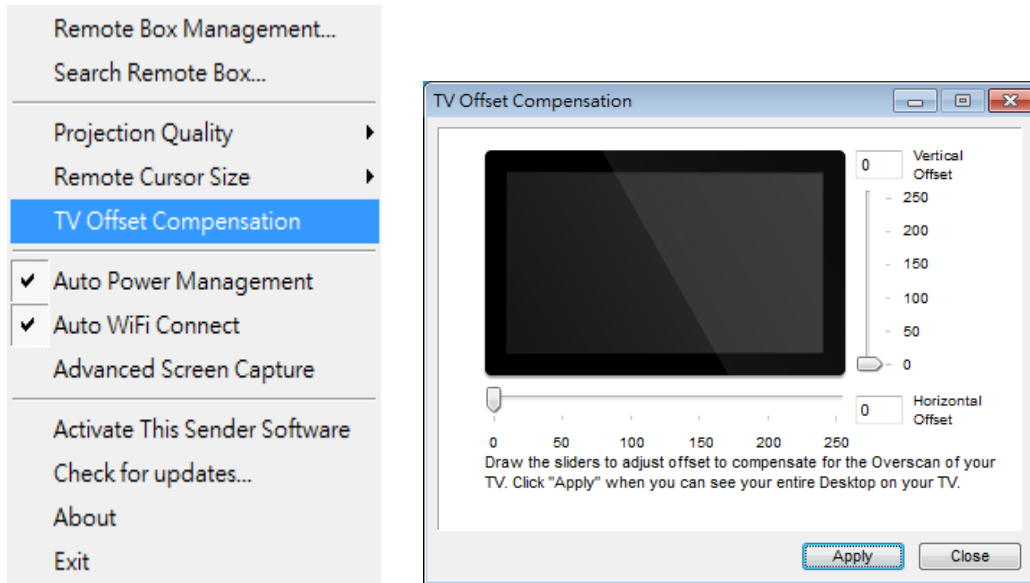
#### 4.4.4 Remote Cursor Size

Adjust the cursor size on projection screen. When you select 3X option, that will adjust the cursor to big size. The default is 2X.



#### 4.4.5 TV Offset Compensation

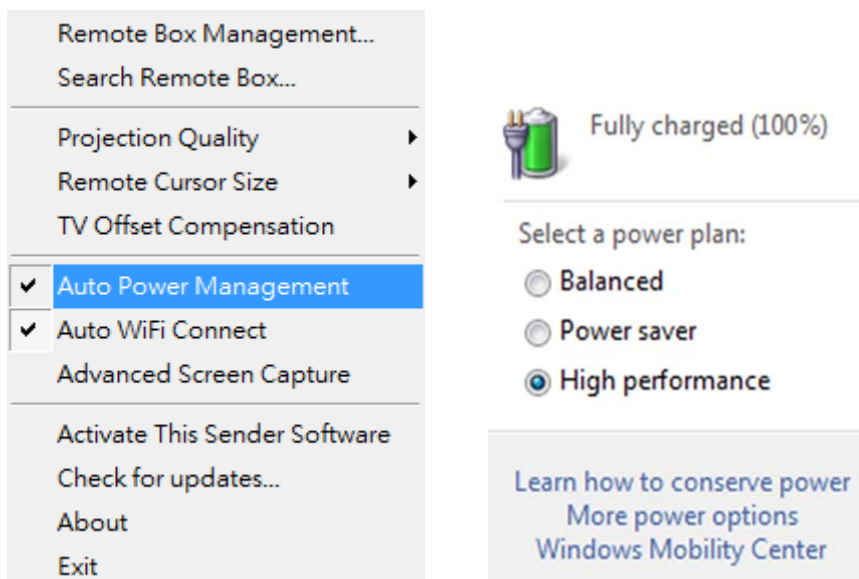
Most TVs has overscan design which will cut the edges of the Desktop. If you cannot turn off overscan from your TV OSD, please use the **<TV Offset Compensation>** to shrink projected screen to fit your TV.



Drag the sliders to set offset value. Click **<Apply>** to update TV projection. Check the TV screen. When the Desktop fits the TV, click **<Close>**.

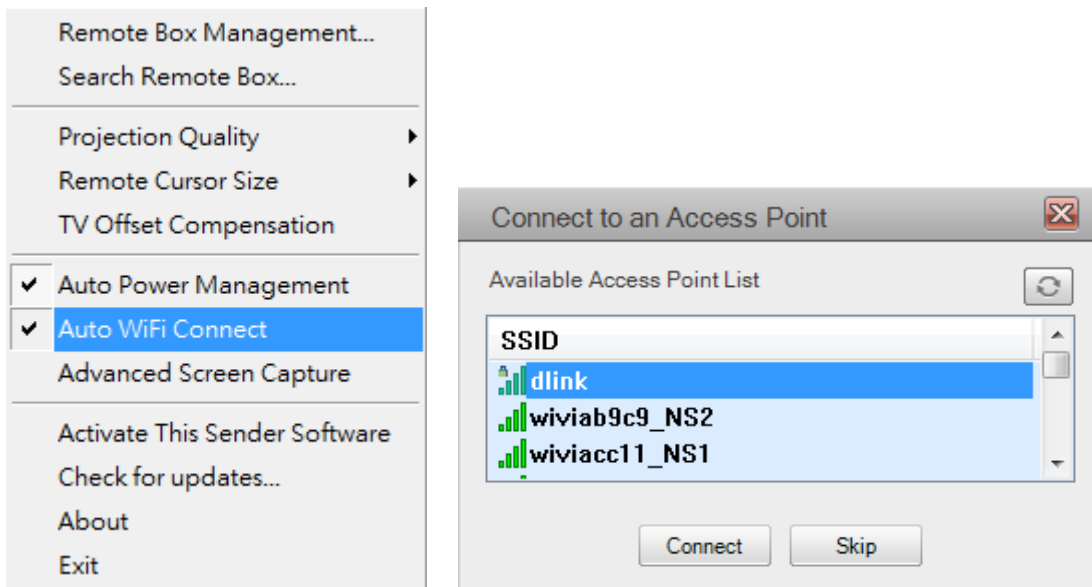
#### 4.4.6 Auto Power Management

**<Auto Power Management>**To make the highest projection performance, application will turn the PC's windows power scheme from current settings to "highest performance", however, you can click the "Auto Power Manage" to enable or disable this function and restore you power scheme immediately.



## 4.4.7 Auto Wi-Fi Connect

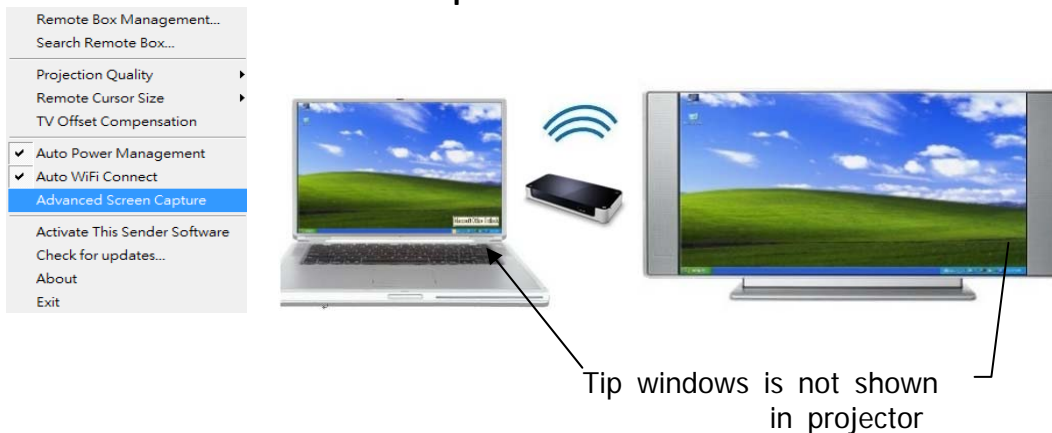
Check <**Auto Wi-Fi Connect**> to let **MirrorOp** search and connect to access points, or turn it off to use your original Wi-Fi manager to connect to access points manually.



## 4.4.8 Advanced Screen Capture

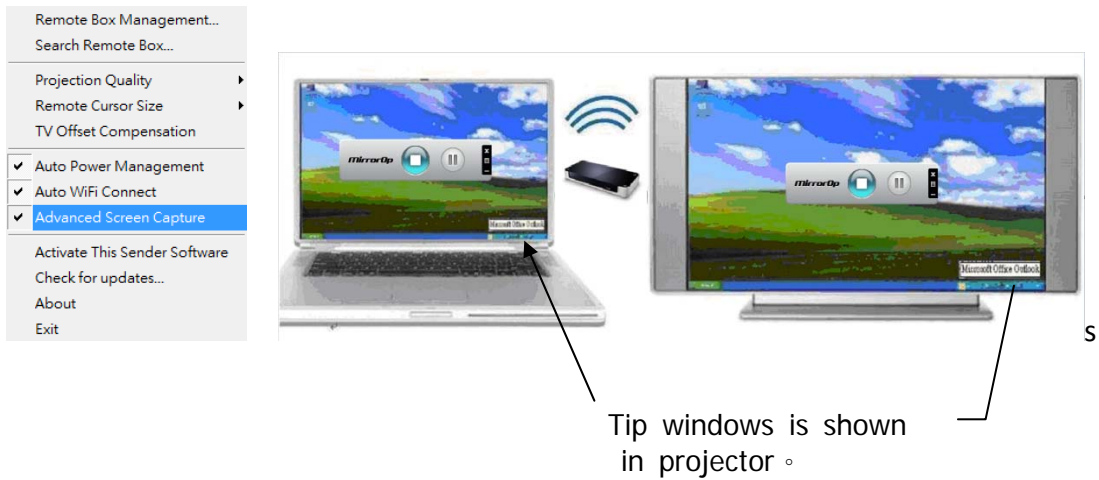
Click the <**Advanced Screen Capture**>, you will be able to see tip windows and other layered windows (include the main UI) on the connected display. However, the mouse cursor may blink from time to time when you are projecting your PC screen!

### ● Disable “Advanced Screen Capture”.



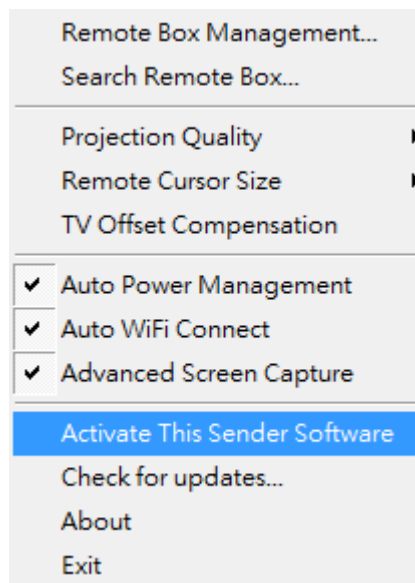
### ● Enable “Advanced Screen Capture”.

## Wireless HDMI Display Receiver User's Manual



### 4.4.9 Activate This Sender Software

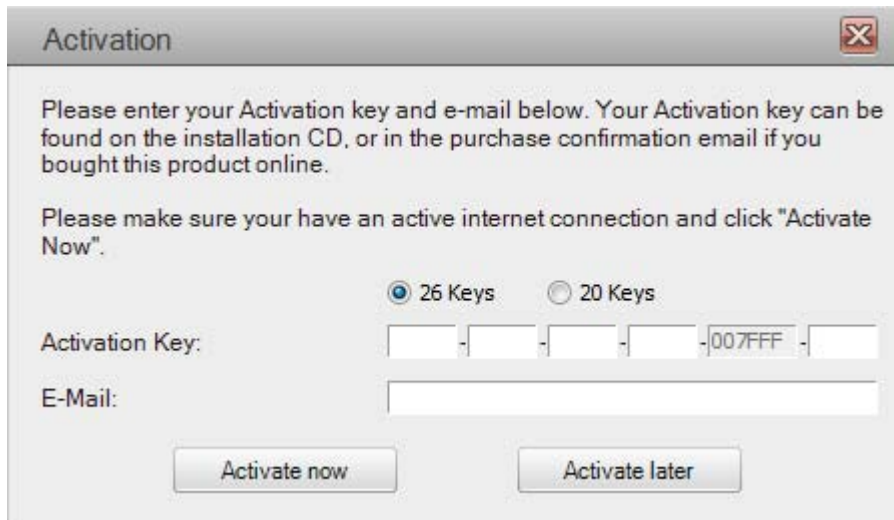
To activate, select <Activate This Sender Software> from the menu.



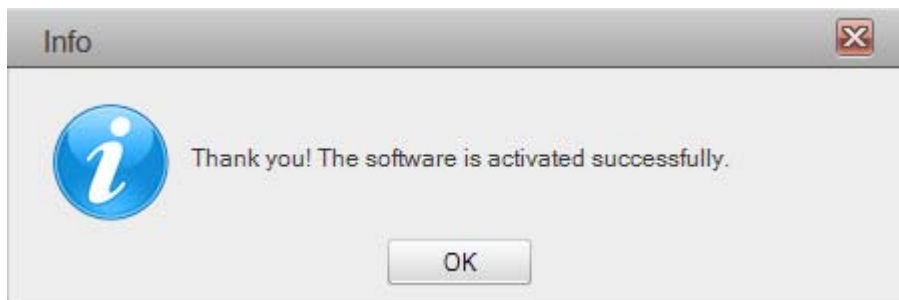
In the Activation dialog, input the activation key printed on the CD envelopes or received by mail. (The fifth field will be auto filled and please ignore it if this field is different from your key.)

Click "Activate now" to activate online.



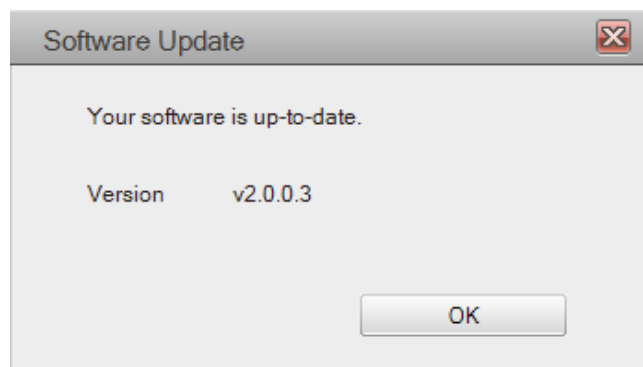
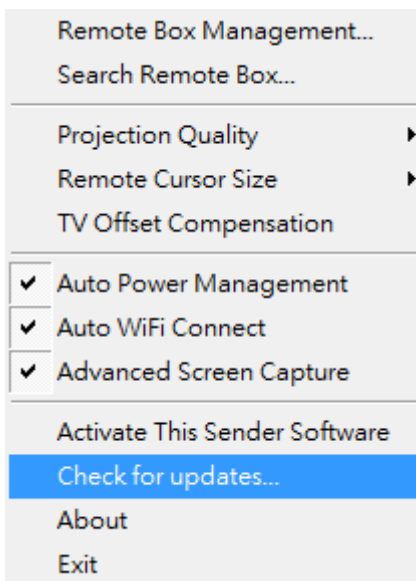


The software will connect to the activation server to validate the information. When validation is passed, your software will be activated.



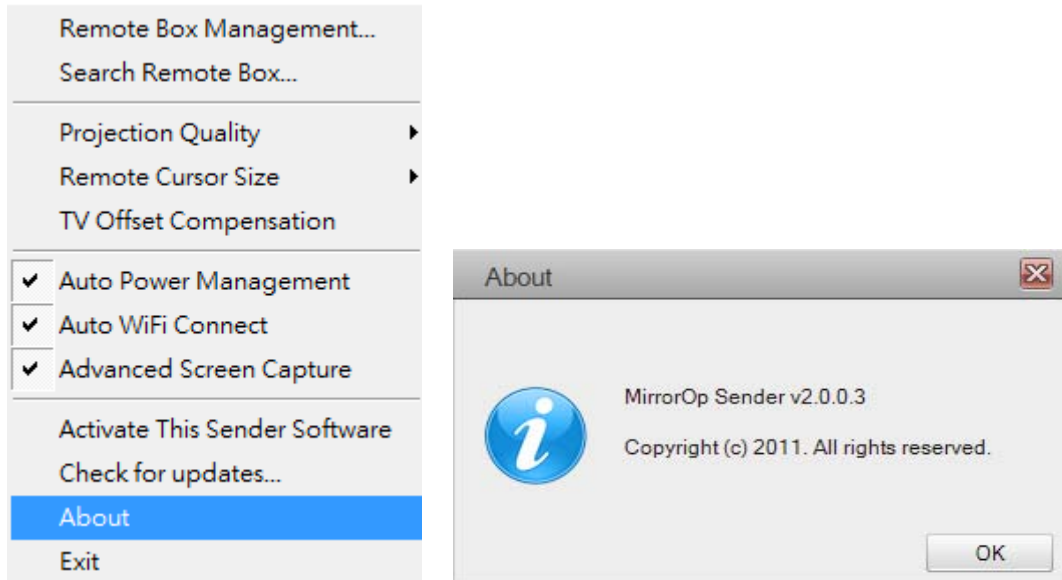
#### 4.4.10 Check for updates

Click <Check for Updates> to check for updates.



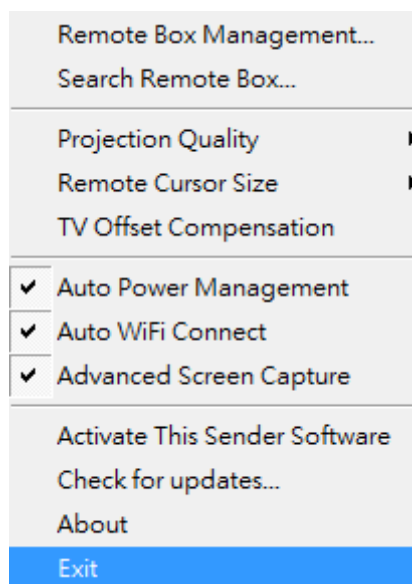
### 4.4.11 About

Click <**About**> to show system information. It includes product model name, Client version, IP address and other information



### 4.4.12 Exit

Click <**Exit**> to exit this application. It will stop current playing status and close the application immediate.



## 5. Using MirrorOp Sender for MAC-OS

### Note:

For MAC-OS, you must purchase software and additional activation key.  
[http://www.mirrorop.com/product\\_Mac\\_Sender.html](http://www.mirrorop.com/product_Mac_Sender.html)

### 5.1 Start Program

After installing the program (\*.pkg file), you will see the MirrorOp icon on your dock:

- 1) Clicking it to execute MirrorOp Sender client.

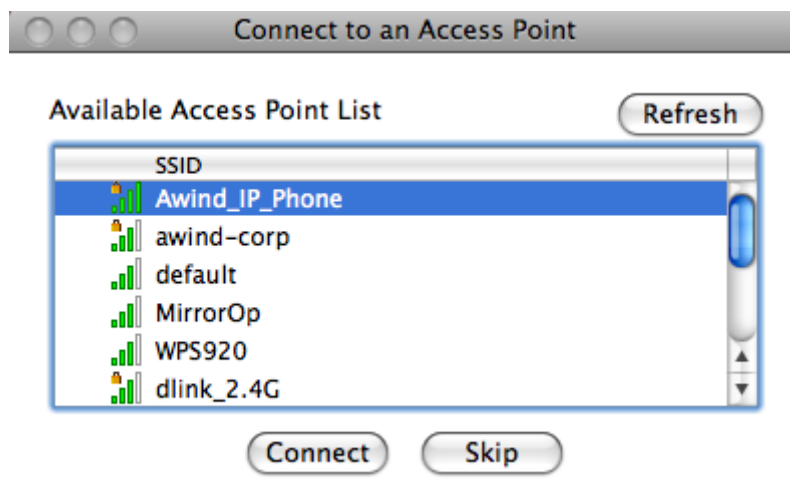


- 2) Program start to list all available Access Point List.(Auto Wi-Fi connect enabled)
- 3) Program start to search all available MirrorOp devices.
- 4) After MirrorOP device is found, click it to start projection.

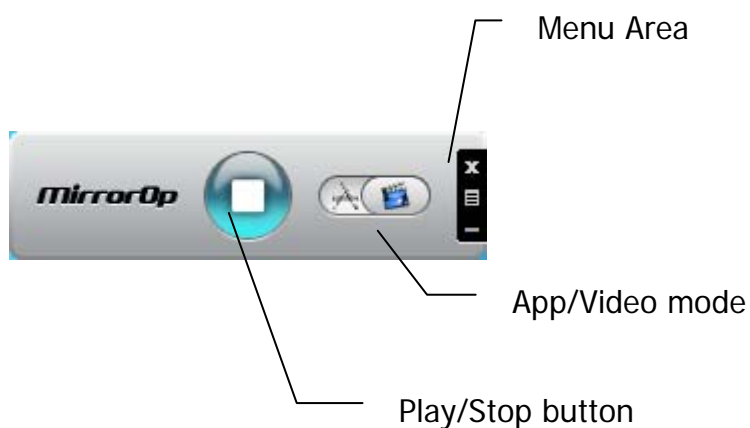
- Search for device



- While Auto Wi-Fi connect is enabled, list all available access point list




## 5.2 Main User interface



## 5.3 Screen Projection



Click the  button for full or split screen, you can project the main screen on to the display immediately.

### Video Mode vs. App Mode




On **MirrorOp Sender** you can find a switch button for two modes:

**Video Mode** and **App Mode**. **Video Mode** is designed for smooth video experiences, so by default it has longer latency between your PC and TV.

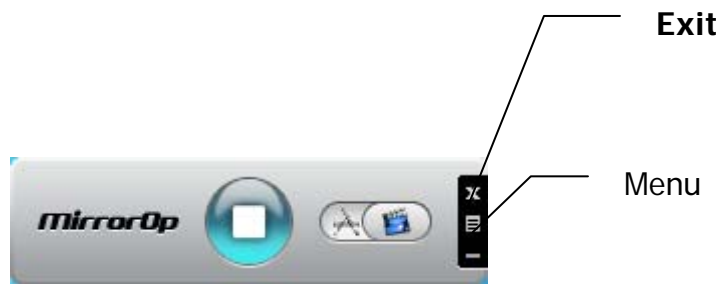


If you have very good network connection (by Ethernet) and prefer to use low latency mode at all times, you may drag the switch to **App Mode**.



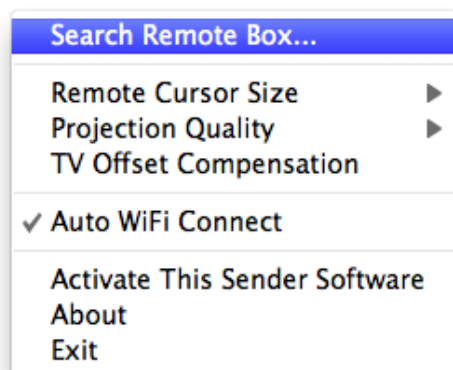
button	Description
	Full Screen Projection
	Video Projection
	Application Projection

## 5.4 Menu Description

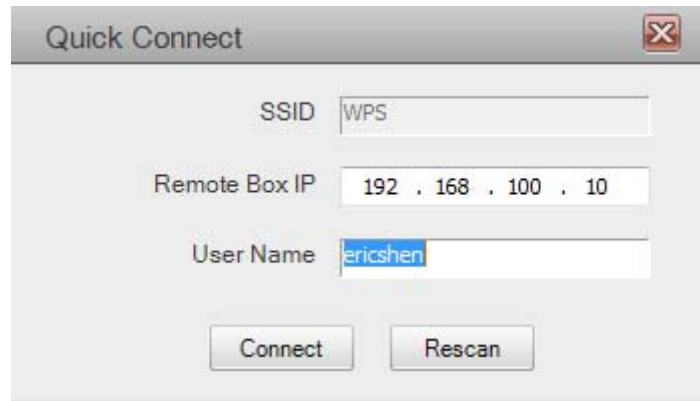


### 5.4.1 Search Remote Box

Click <Search Remote Box> to connect to another **MirrorOp**.

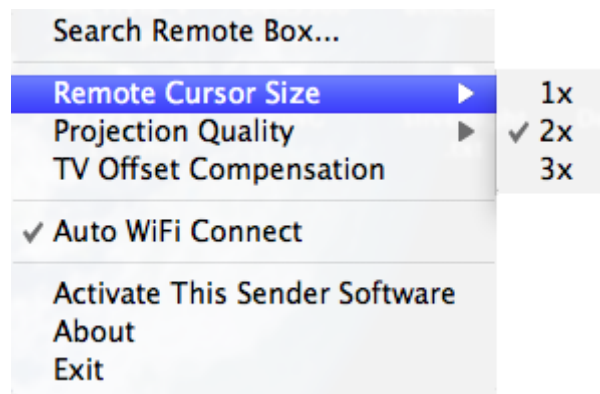


The last **MirrorOp** you connected is remembered. To connect to another one, Click <Rescan>.



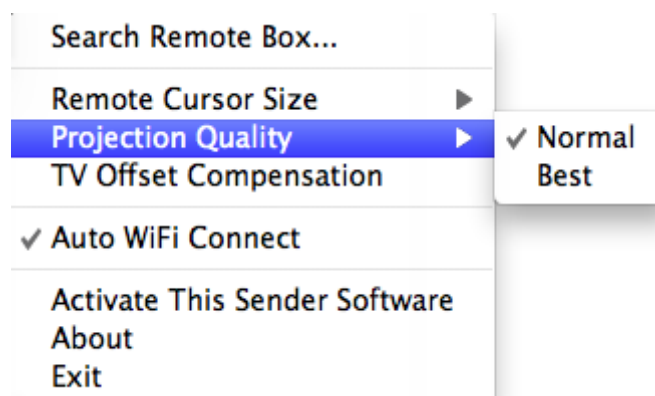
### 5.4.2 Remote Cursor Size

Adjust the cursor size on projection screen. When you select 3X option, that will adjust the cursor to big size. The default is 2X.



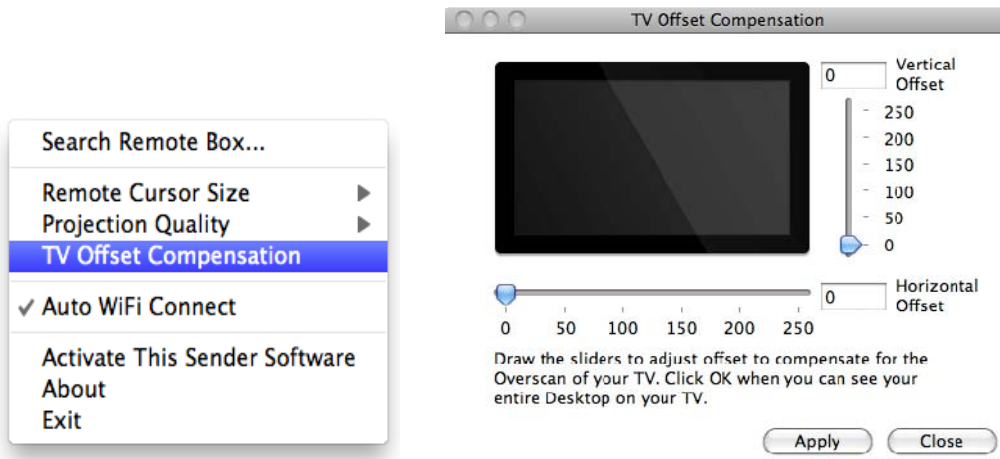
### 5.4.3 Projection Quality

Adjust projection image quality in **<Projection Quality>**. Higher quality requires higher bandwidth. Default is Normal.



## 5.4.4 TV Offset Compensation

Most TVs has overscan design which will cut the edges of the Desktop. If you cannot turn off overscan from your TV OSD, please use the **<TV Offset Compensation>** to shrink projected screen to fit your TV.



Drag the sliders to set offset value. Click **<Apply>** to update TV projection. Check the TV screen. When the Desktop fits the TV, click **<Close>**.

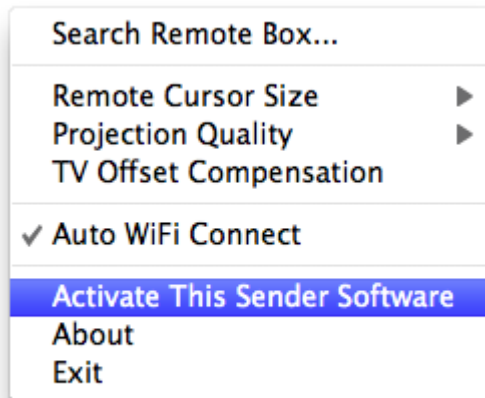
## 5.4.5 Auto Wi-Fi Connect

Check **<Auto Wi-Fi Connect>** to let **MirrorOp** search and connect to access points, or turn it off to use your original Wi-Fi manager to connect to access points manually.



## 5.4.6 Activate This Sender Software

To activate, select "Activate This Sender Software" from the menu.

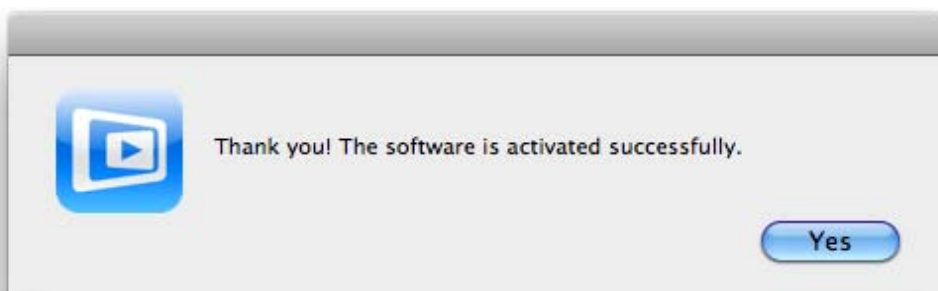


In the Activation dialog, input the activation key printed on the CD envelopes or received by mail. (The fifth field will be auto filled and please ignore it if this field is different from your key.)

Click “**Activate now**” to activate online.



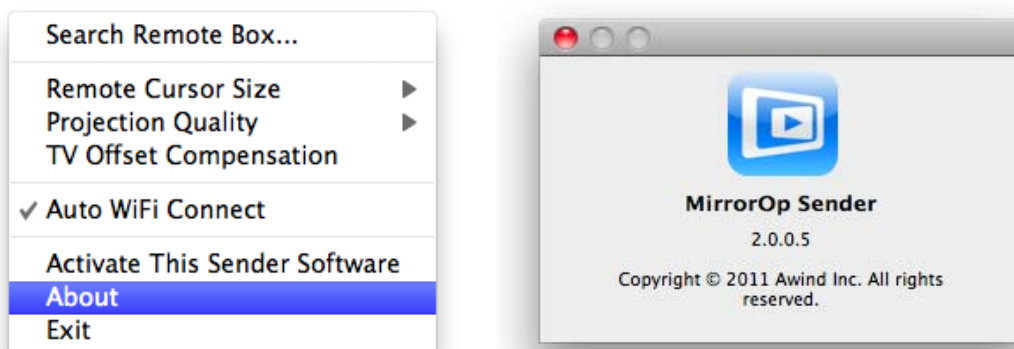
The software will connect to the activation server to validate the information. When validation is passed, your software will be activated.





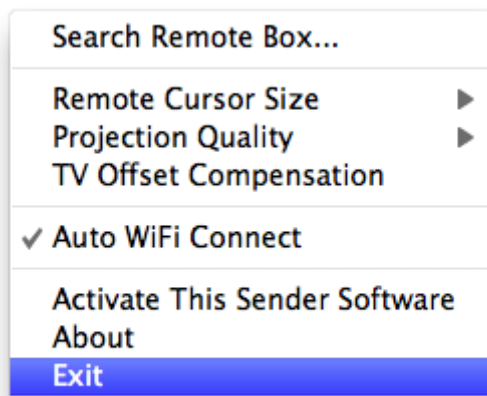
## 5.4.7 About

Click <**About**> to show system information. It includes product model name, Client version, IP address and other information



## 5.4.8 Exit

Click <**Exit**> to exit this application. It will stop current playing status and close the application immediate.



## 5.4.9 Main Menu Bar

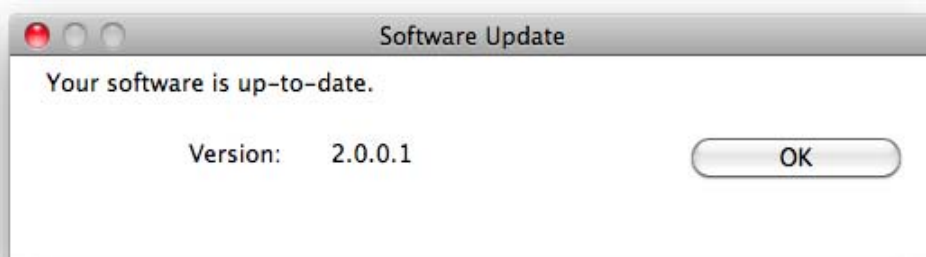
The menu bar in Top left-hand corner, and click <**MirrorOp Sender**> button.



Click **<About>** to show version information of this program.



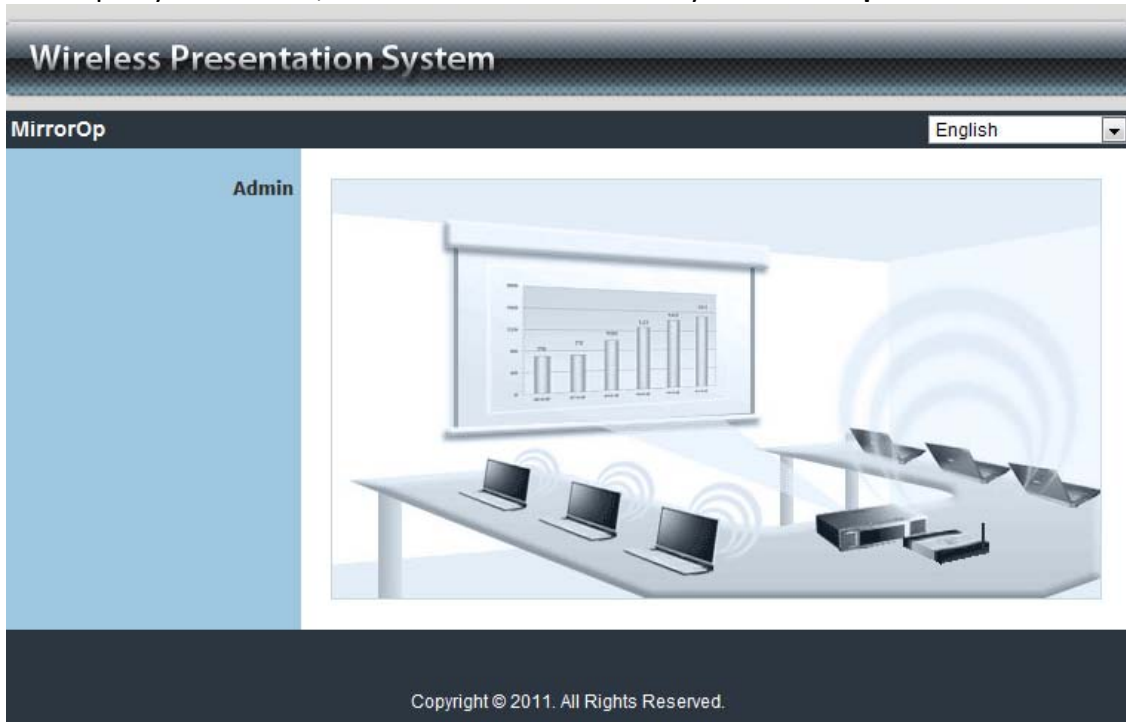
Click **<Check for Updates>** to check for updates.



## 6 Web Management

### ■ Home Page

- ◆ Make sure your PC is connected to **MirrorOp** device successfully.
- ◆ Open your browser, and enter the IP address of your **MirrorOp** device.



### ■ Login Web Admin



- ◆ Click [**Admin**] and then enter password to login web page.
- ◆ Default password is "admin".

## ■ System Status

The screenshot shows the 'System Status' page in the 'MirrorOp > Admin > System Status' section. The page has a dark header with the title 'Wireless Presentation System' and a 'Logout »' button. A left sidebar contains navigation links: 'System Status', 'Network Setup', 'Change Passwords', 'Reset to Default', 'Firmware Update', and 'Reboot System'. The main content area displays system information in a table format.

<b>Model Name</b>	MirrorOp
<b>Versions</b>	
Firmware Version	0.0.0.8
<b>Network Status</b>	
IP Address	192.168.168.98
Subnet Mask	255.255.255.0
Default Gateway	192.168.168.251
Wireless MAC Address	E0:69:95:65:98:48
<b>Connection Status</b>	
Projecting Status	Waiting for Projecting
Total Users	0

Copyright © 2011. All Rights Reserved.

\*\*\* Click [**System Status**] to show current system status.

**Model Name:** Product model name

**Versions:**

- ◆ Firmware version: Product firmware version number

**Network Status:**

- ◆ IP address: IP address of **MirrorOp** device.
- ◆ Subnet Mask: subnet mask
- ◆ Default Gateway: default gateway
- ◆ Wire MAC address: wire network MAC address

## ■ Network Setup

**Wireless Presentation System**

MirrorOp > Admin > Network Setup Logout »

**System Status**  
**Network Setup**  
 Change Passwords  
 Reset to Default  
 Firmware Update  
 Reboot System

**IP Setup**

Obtain an IP address automatically  Use the following IP address

IP Address: 192 . 168 . 100 . 10  
 Subnet Mask: 255 . 255 . 255 . 0  
 Default Gateway: 192 . 168 . 100 . 10  
 DNS Server: 192 . 168 . 100 . 10

**DHCP Server Setup**

Auto  Disable

Start IP: 192 . 168 . 100 . 11  
 End IP: 192 . 168 . 100 . 254  
 Subnet Mask: 255 . 255 . 255 . 0  
 Default Gateway: 192 . 168 . 100 . 10  
 DNS Server: 192 . 168 . 100 . 10

**Wireless Setup**

Region: WORLDWIDE  
 SSID: MirrorOp  
 SSID Broadcast:  Enable  Disable  
 Channel: Auto  
 Encryption: Disable  
 Key:

**Ap Client**

Connect to Existing AP:  Enable  Disable  
 Existing AP SSID:   
 Encryption: Disable  
 Key:

Apply Cancel

Copyright © 2011. All Rights Reserved.

### < IP Setup >

You can select “obtain IP address automatically” or “Use the following IP address”

- ◆ IP Address: The default value is 192.168.100.10.
- ◆ Subnet Mask: The default value is 255.255.255.0
- ◆ Default Gateway: The default value is 192.168.100.10

### < DHCP Server Setup >

You can select “Auto” or “Disable”. When “Auto” is selected, it will automatically disable DHCP on **MirrorOp** is another DHCP server is detected, otherwise it will enable its DHCP service.

- ◆ Start IP: The start IP address of DHCP Server.
- ◆ End IP: The end IP address of DHCP Server

### < Wireless Setup >

- ◆ Wireless LAN: you can select “Enable” or “Disable”
- ◆ Region: default value is “Worldwide”.
- ◆ SSID: SSID string, max. Length is 32 bytes.
- ◆ SSID Broadcast: you can select “Enable” or “Disable”

- ◆ Channel: to set fixed channel or Auto.
- ◆ Security: Disable/WEP/WPA/WPA2
- ◆ Key: Security key of your choice.

**< AP Client >**

- ◆ Connect to existing AP: Type in the Home AP SSID you want to connect.
- ◆ Encryption: Disable/WEP/WPA/WPA2
- ◆ Key: Type the Home AP's security key.

**<Apply >**: press button to select this mode

**<Cancel >**: press button to abort action.

**<Back >**: back to Operating mode main menu

## ■ Change Passwords

The screenshot shows the 'Wireless Presentation System' Admin interface. The breadcrumb trail is 'MirrorOp > Admin > Change Passwords'. A 'Logout' button is in the top right. A left sidebar contains menu items: 'System Status', 'Network Setup', 'Change Passwords' (highlighted), 'Reset to Default', 'Firmware Update', and 'Reboot System'. The main content area is titled 'Admin' and contains two input fields: 'Enter New Password' and 'Confirm New Password', with an 'Apply' button to the right. The footer reads 'Copyright © 2011. All Rights Reserved.'

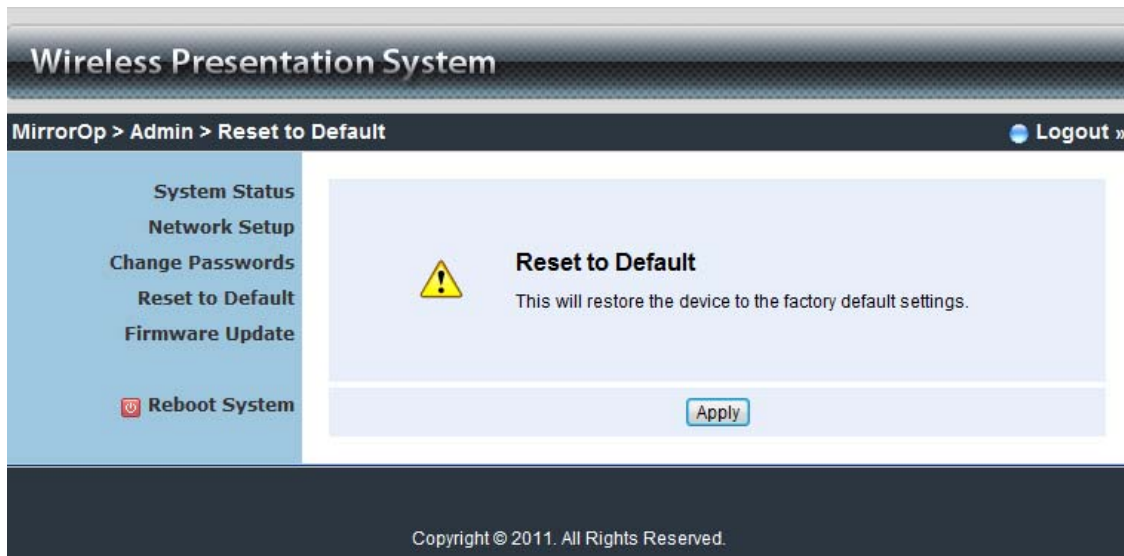
\*\*\* Click [**Change Password**] button to change password value.

**<Enter New Password >**: enter new password you want to change for each category.

**<Confirm New Password >**: double confirm new password.

**<Apply >**: Confirmation and Save modifications.

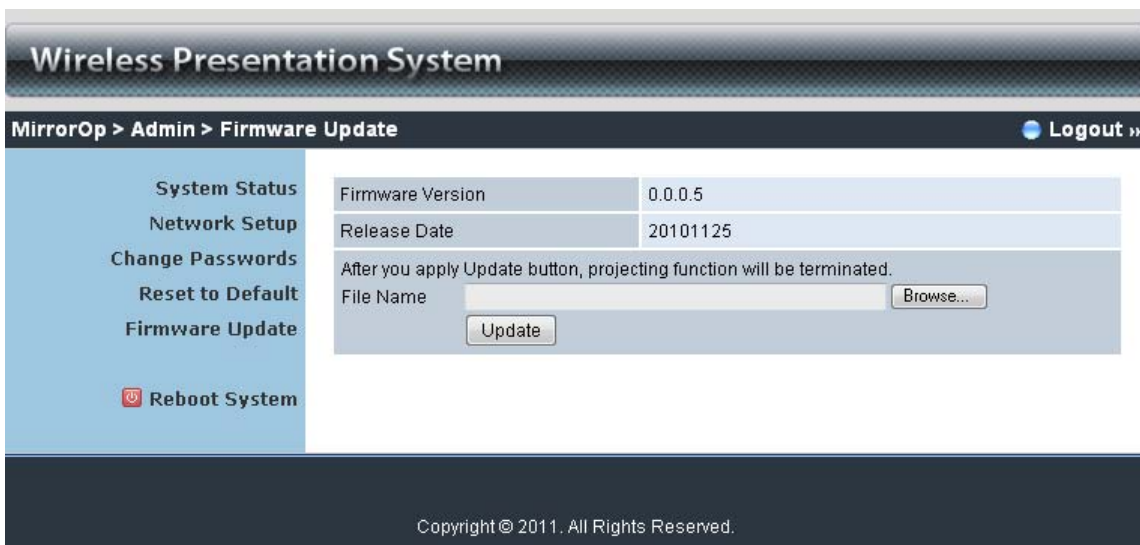
## ■ Reset to Default



\*\*\* Click [**Reset to Default**] button to restore factory default settings.

<**Apply**>: Confirmation and action.

## ■ Firmware Update



\*\*\* Click [**Firmware Update**] button to upgrade firmware.

- ◆ Firstly, you have to get latest firmware image file from your vendor
- ◆ Click <**Choose File**> to specify file name you want to upgrade.
- ◆ Click <**Update**> to start.

The upgrade process takes about 5 minutes to complete. The **MirrorOp** device will reboot automatically when the process is completed.

**Warning:** Don't power off **MirrorOp** while firmware upgrade in progress, otherwise **MirrorOp** device may be damaged and have to be returned to your vendor for repair.

## ■ Reboot System



\*\*\* Click **[Reboot System]** button to restart system

<Reboot>: reboot system automatically.

## ■ Logout



\*\*\* Click **[Logout]** button to return to home page.



## 7 Using DLNA Function via Wireless HDMI Display Receiver

### 7-1 What is the support on Wireless HDMI Display Receiver for DLNA function?

**Wireless HDMI Display Receiver** is the one of DMR (Digital Media Renderer) can play media contents which are streamed by DMC (Digital Media Player) from DMS (Digital Media Server).

#### Support Media format:

Video: AVI / ASF / WMV / MKV / MP4 / MOV / 3GP / TS / RM / FLV / MPG

Audio: LPCM / MP3 / AAC / WMA

Image: JPEG / PNG

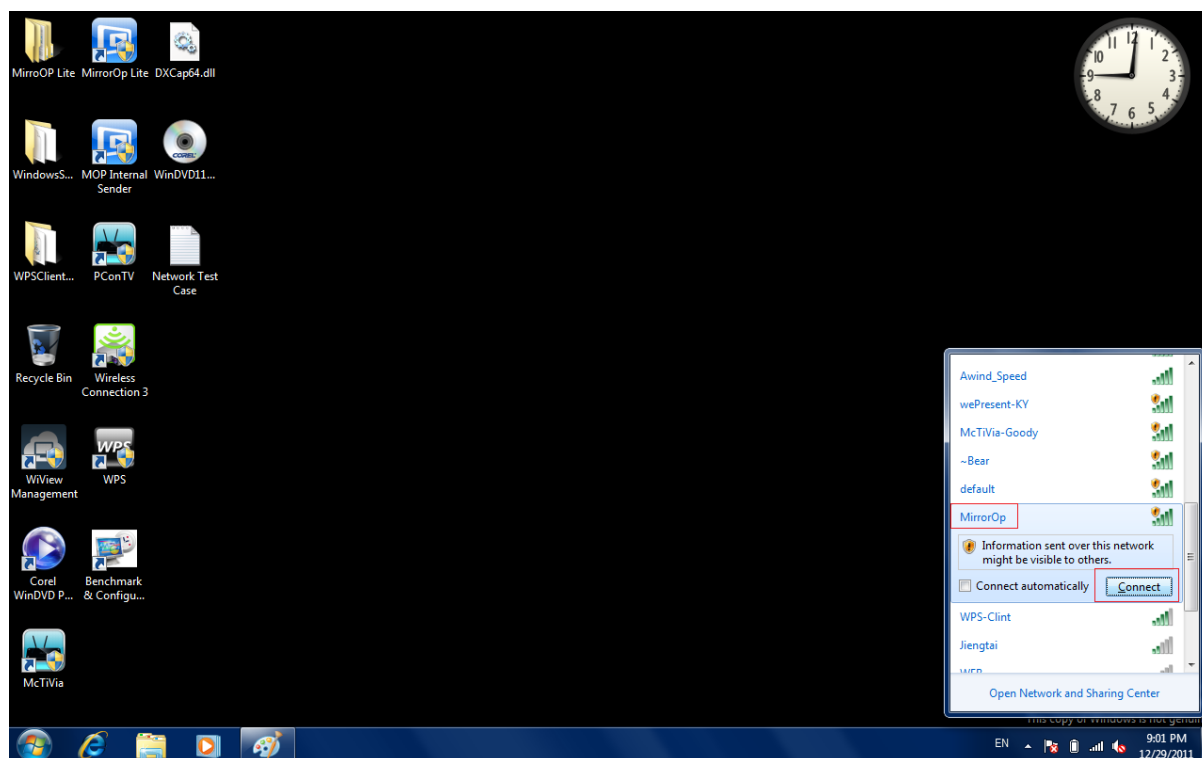
Notice: **Wireless HDMI Display Receiver** supports above media format but some formats can be streamed by specific DMC.

### 7-2 Preparation

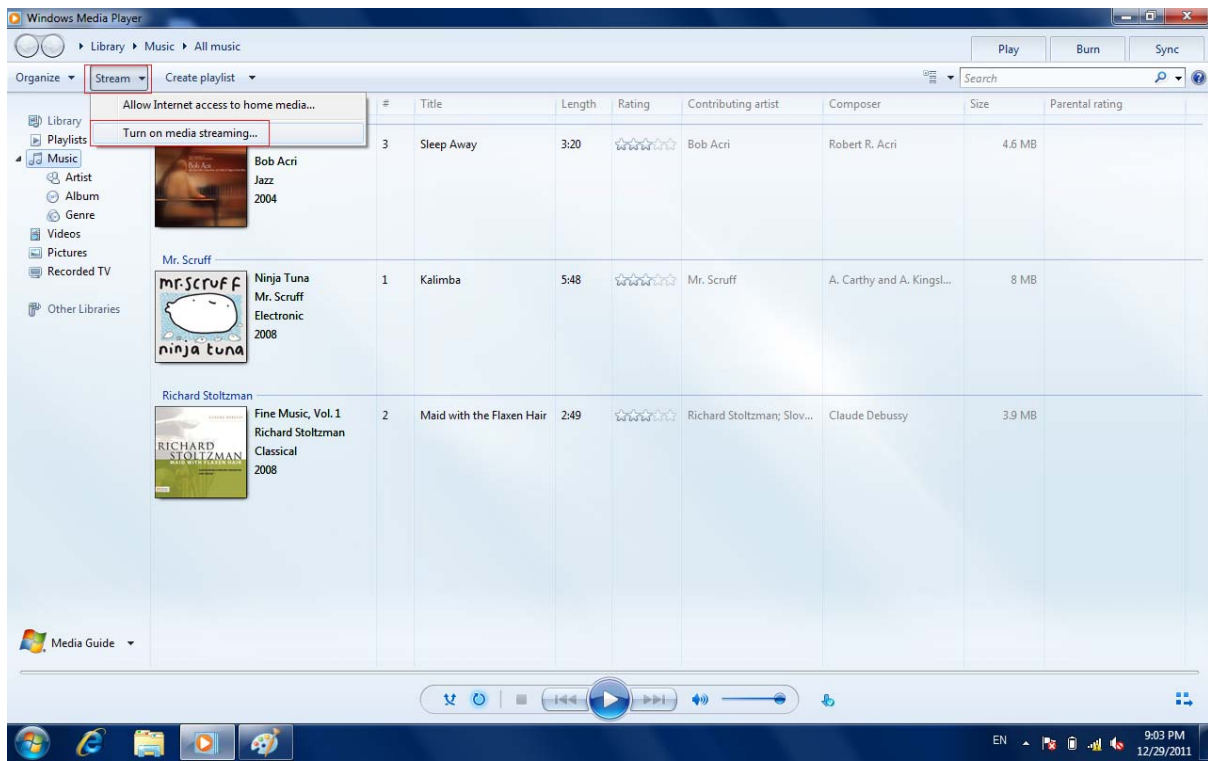
- Make sure the operation system is Windows Vista / Windows 7.
- Make sure Wireless HDMI Display Receiver is ready for connecting on standby screen.
- Connect Wireless HDMI Display Receiver and laptop by wire or wireless.

### 7-3 Quick Start

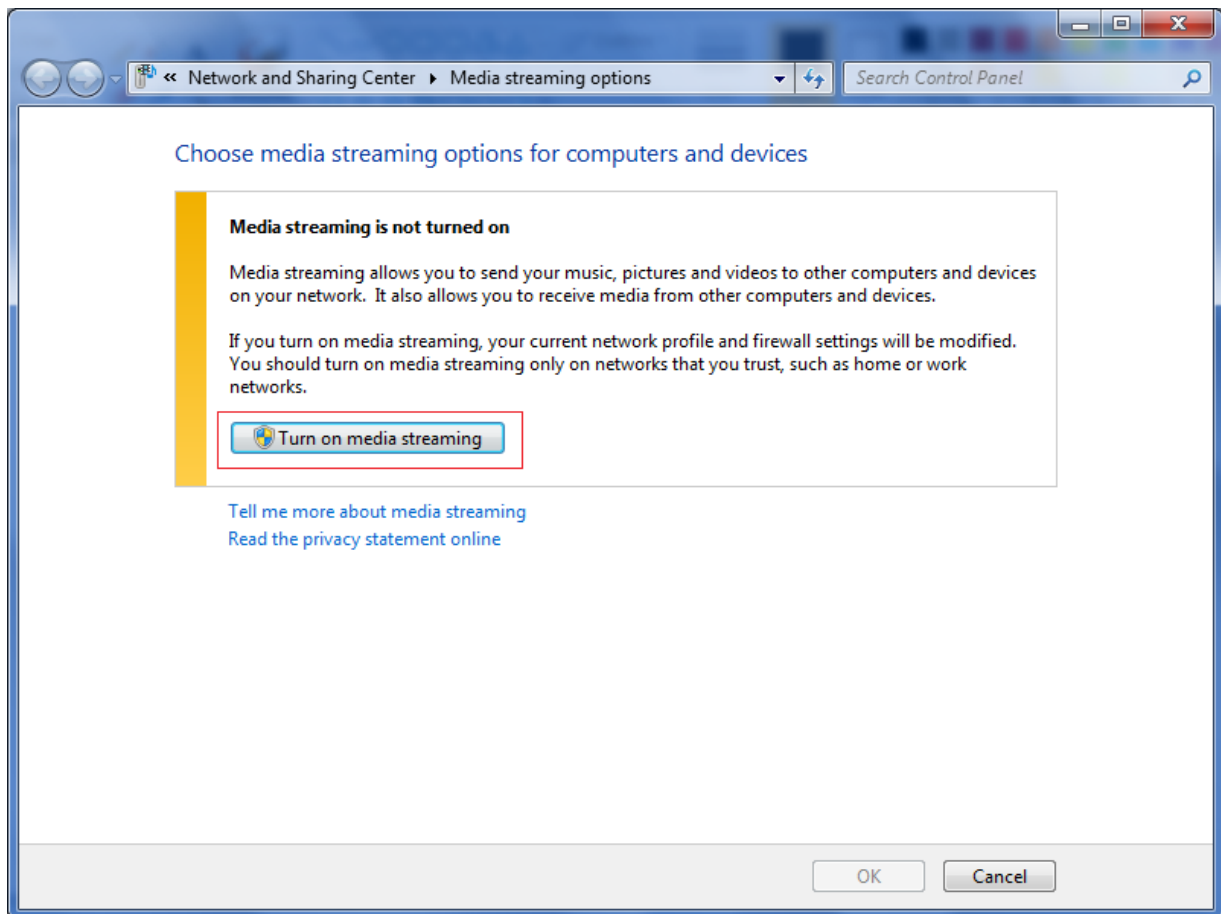
- Connect Wireless HDMI Display Receiver device via wire or wireless.



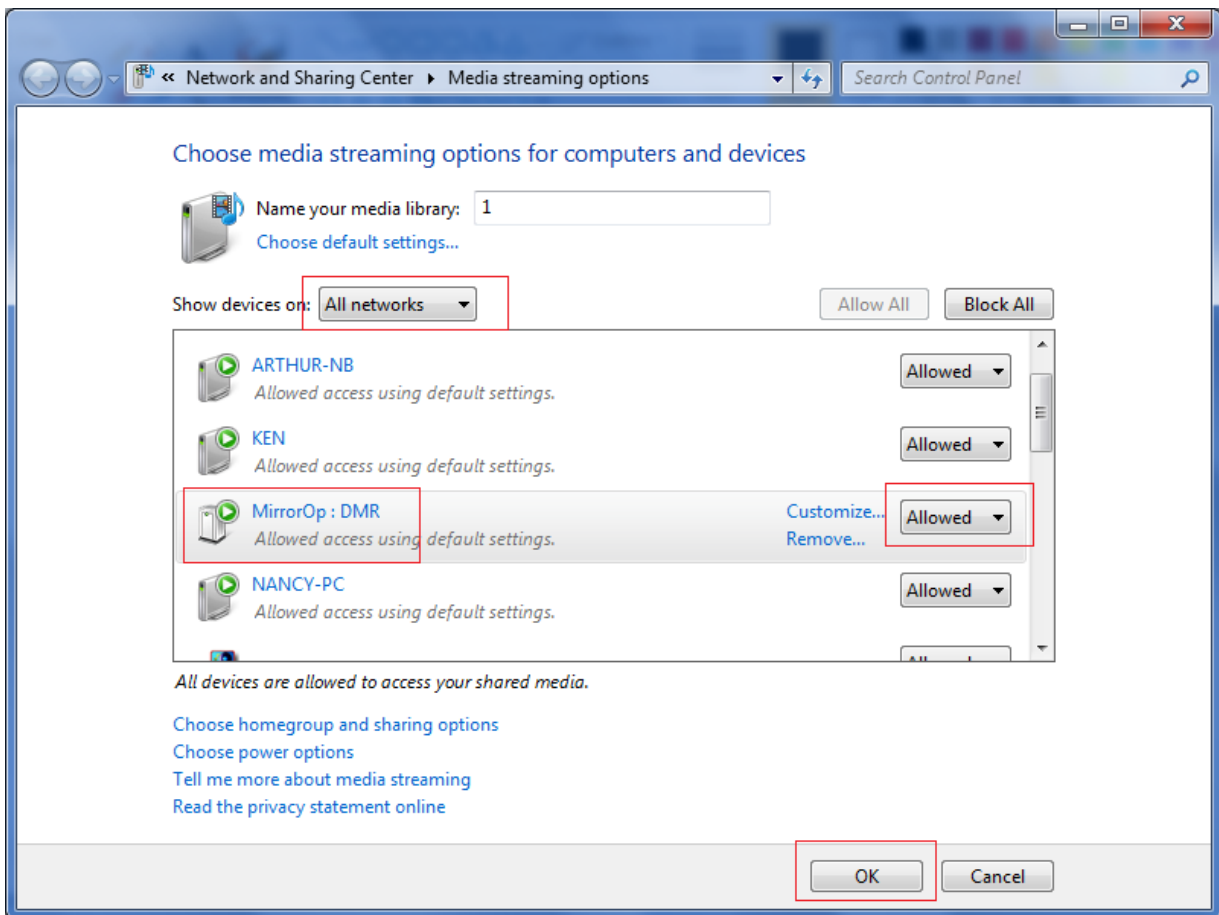
- Start Windows Media Player then click “Turn on media streaming” from “Stream” in menu.



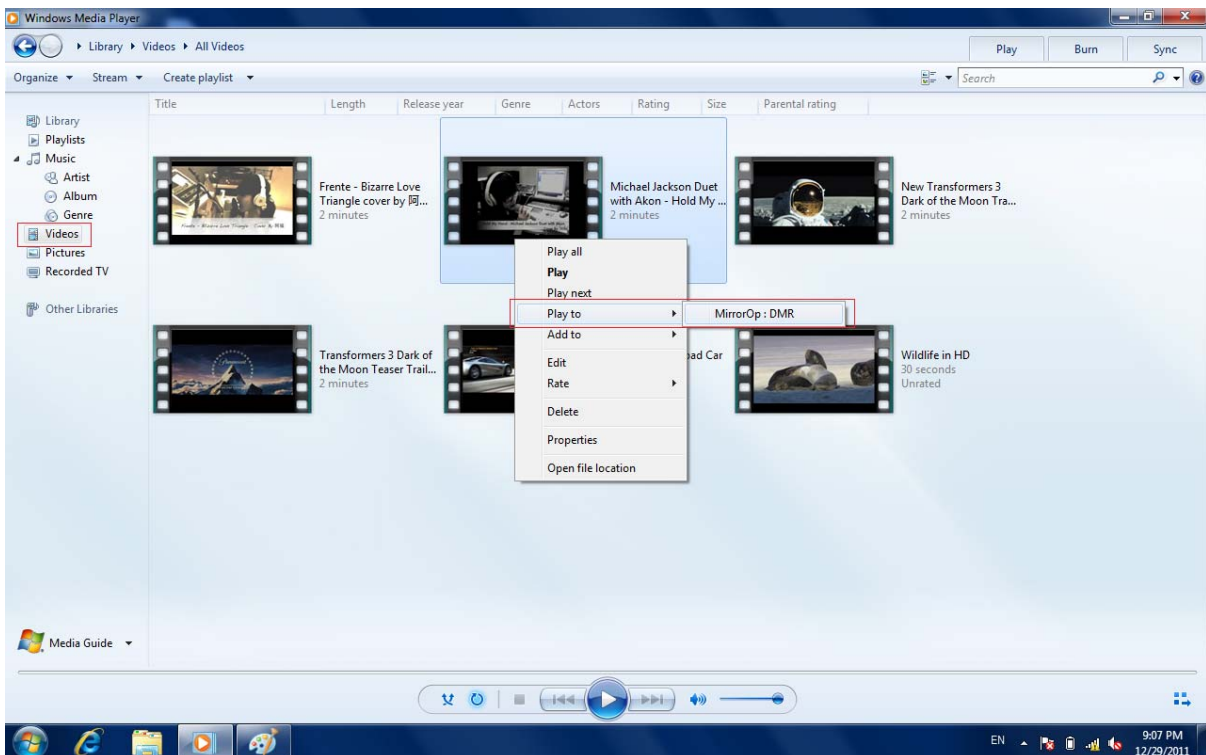
c. Click "Turn on media streaming" button.



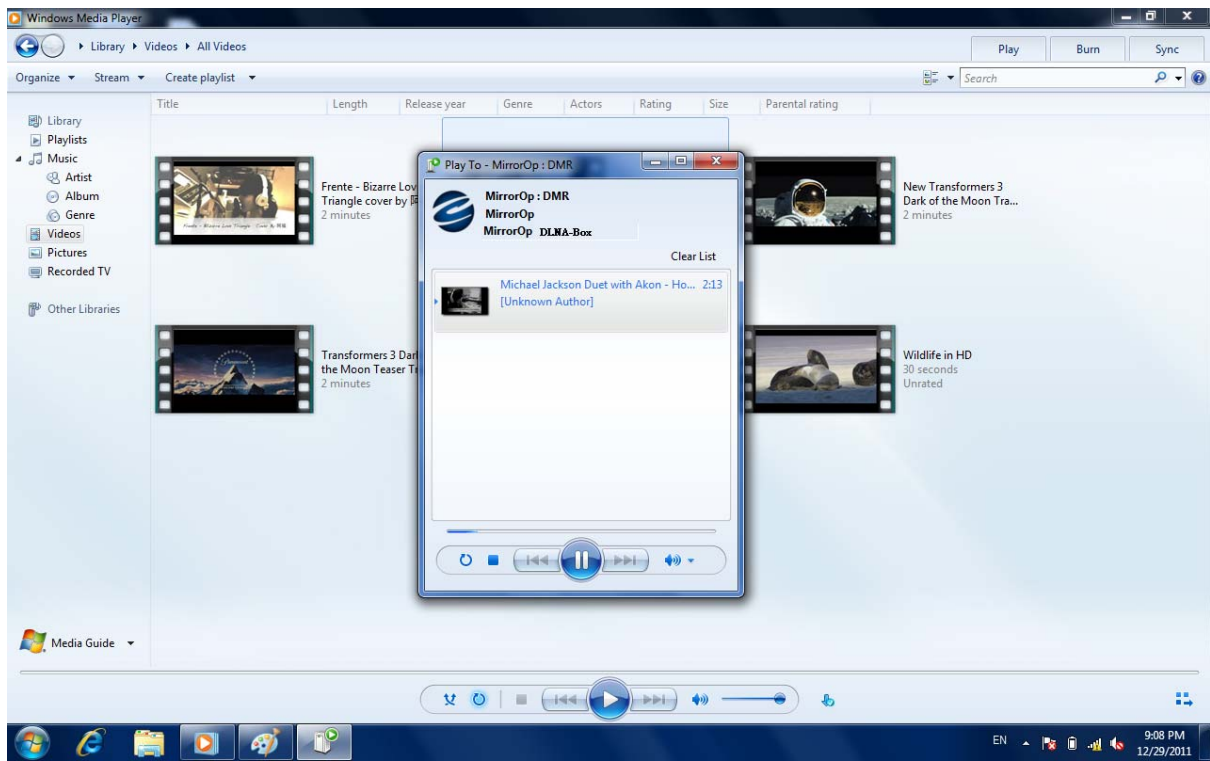
d. Select "All networks" from "Show device on:" and make sure "MirrorOp: DMR" is selected as "Allowed" then click OK button to finish setting. After finished setup, you can stream media content to DMR device direct.



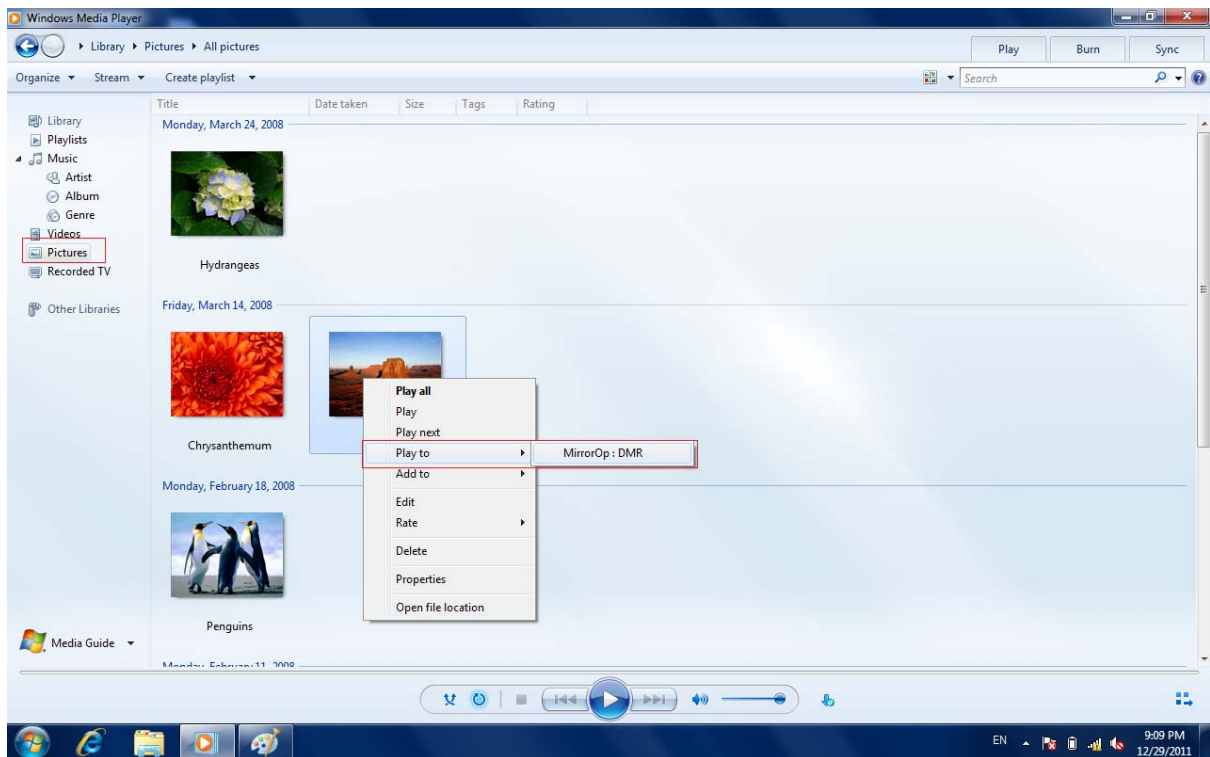
- e. Video streaming: Go to Video Library then right-click on video file you want to stream. Then select MirrorOp DMR device from menu list of Play to. After that, the video is streamed on your TV which connected with your MirrorOp device.



# Wireless HDMI Display Receiver User's Manual

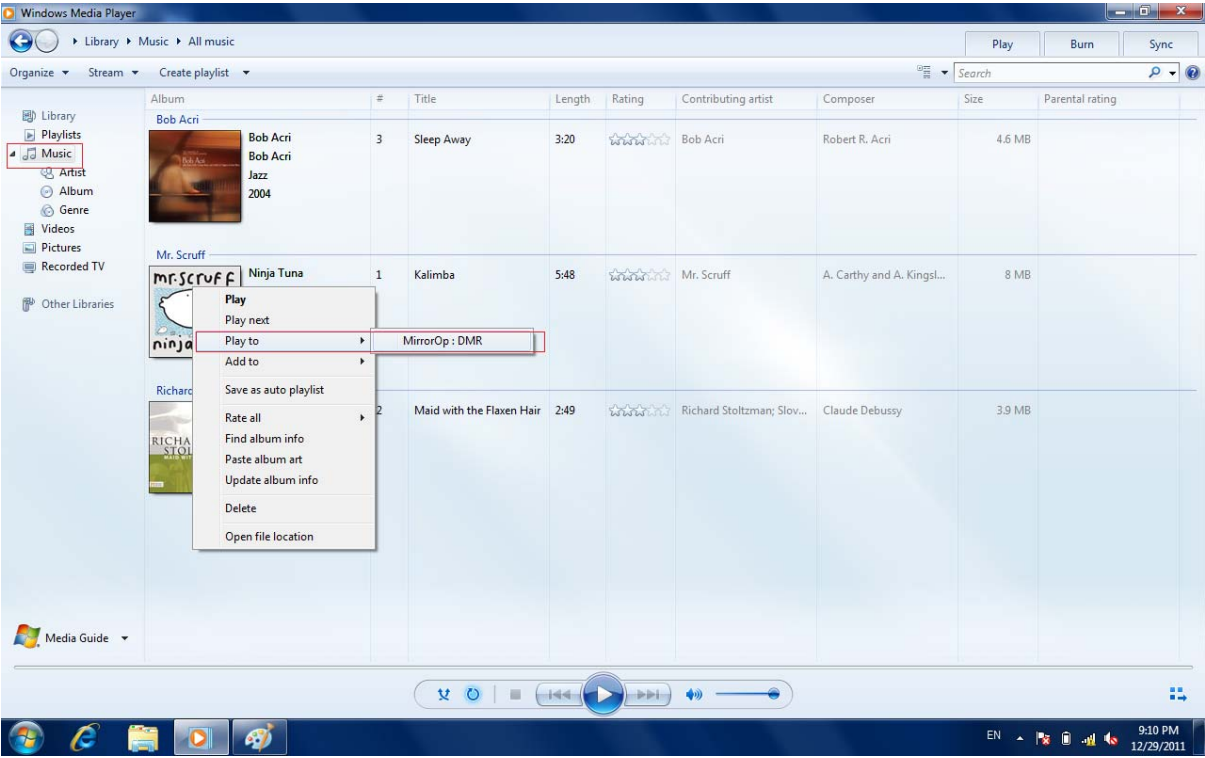


- f. Photo streaming: Go to Picture Library then right-click on photo file you want to stream. Then select MirrorOp DMR device from menu list of Play to. After that, the photo is streamed on your TV which connected with your MirrorOp device.



- g. Music streaming: Go to Music Library then right-click on photo file you want to stream. Then select MirrorOp DMR device from menu list of Play to. After that, the music is streamed on your TV which connected with your MirrorOp device.

Wireless HDMI Display Receiver User's Manual



## 8 System requirements

### Mac PC Requirements

<b>CPU Grade</b>	Intel Dual Core 1.4 GHz or better (PowerPC not supported)
<b>Graphics</b>	nVIDIA or ATI graphic card with 64MB VRAM or above
<b>Operating System</b>	Mac OS X 10.5+
<b>Recommended Models</b>	MacBook after 2009-01-21 All series of MacBook Pro MacBook Air after 2010-06-08 All Mac Desktops that meet the above hardware requirements

### Windows PC Requirements

<b>CPU Grade</b>	Dual Core 1.8 GHz or better (excluding atom processor)
<b>Display Adaptor</b>	nVIDIA or ATI graphic card with 64MB VRAM or above
<b>Operating System</b>	Windows Vista, Windows 7, Windows XP
<b>WiFi</b>	802.11n