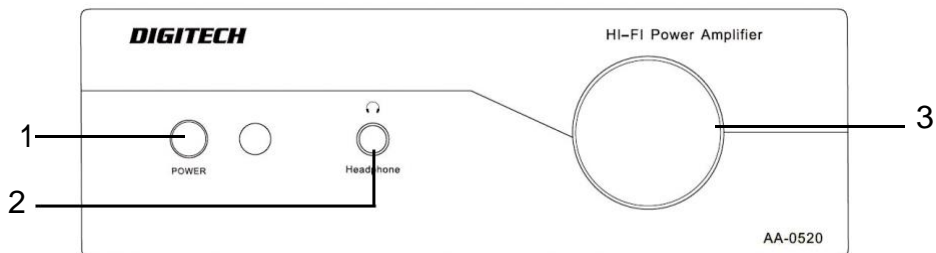


SPECIFICATIONS

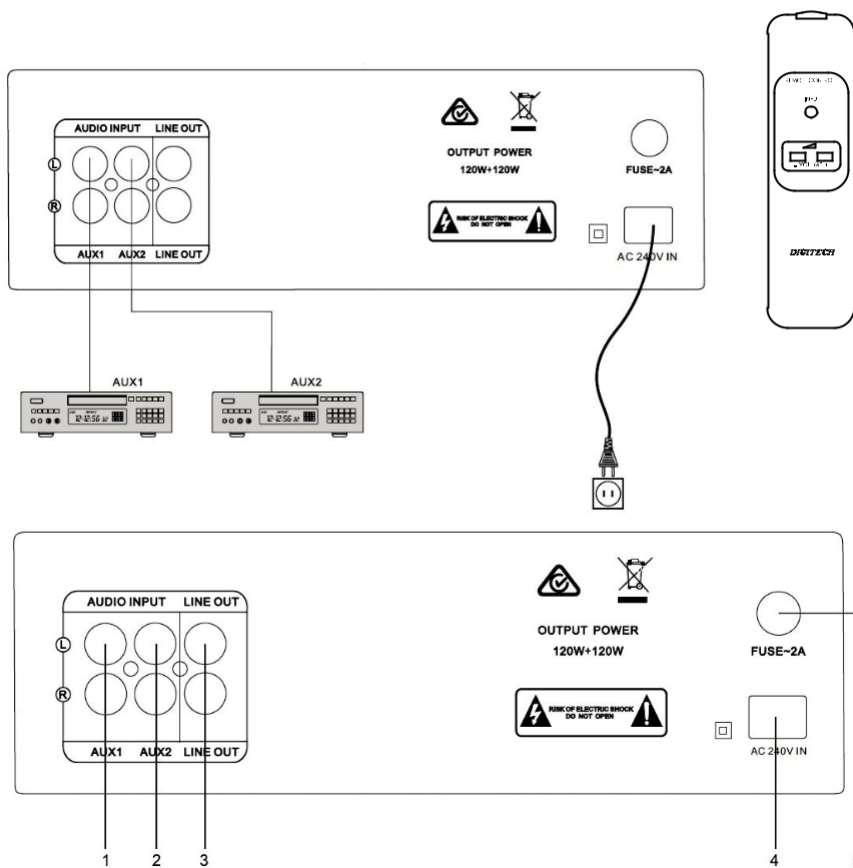
Output Power:	120W +120WRMS Max (4 Ohms)*
Input Impedence:	47k Ohm
InputSensitivity:	300mV
Signal-to-Noise:	≥80dB
Total Harmonic Distortion(1KHz):	≤0.5%
Frequency Response:	20Hz-20KHz±2dB
Power Input:	240VAC @ 2A Max.
Audio Input:	Dual Stereo RCA Sockets
Audio Output:	1 x Stereo RCA Sockets
Weight:	3.5kg
Dimensions:	250(W) x 240(D) x 90(H)mm

*The minimum allowable speaker impedance is 4 Ohms, which gives the maximum rated power of 120 Watts per channel. It will work perfectly well with higher impedance speakers such as 8 Ohms, it's just that the maximum power will be reduced. With 8 Ohms you will only get 60 Watts per channel, 6 Ohms you would get about 80 Watts per channel and so on.



1. Power Button
2. Headphone Signal Output
3. Volume

CONNECTIONS



1. Aux Signal Input
2. Aux 2 Signal Input
3. Line Out
4. AC Input
5. Fuse

Distributed by:
 TechBrands by Electus Distribution Pty. Ltd.
 320 Victoria Rd, Rydalmere
 NSW 2116 Australia

Ph: 1300 738 555
 Int'l: +61 2 8832 3200
 Fax: 1300 738 500

www.techbrands.com

Made in China